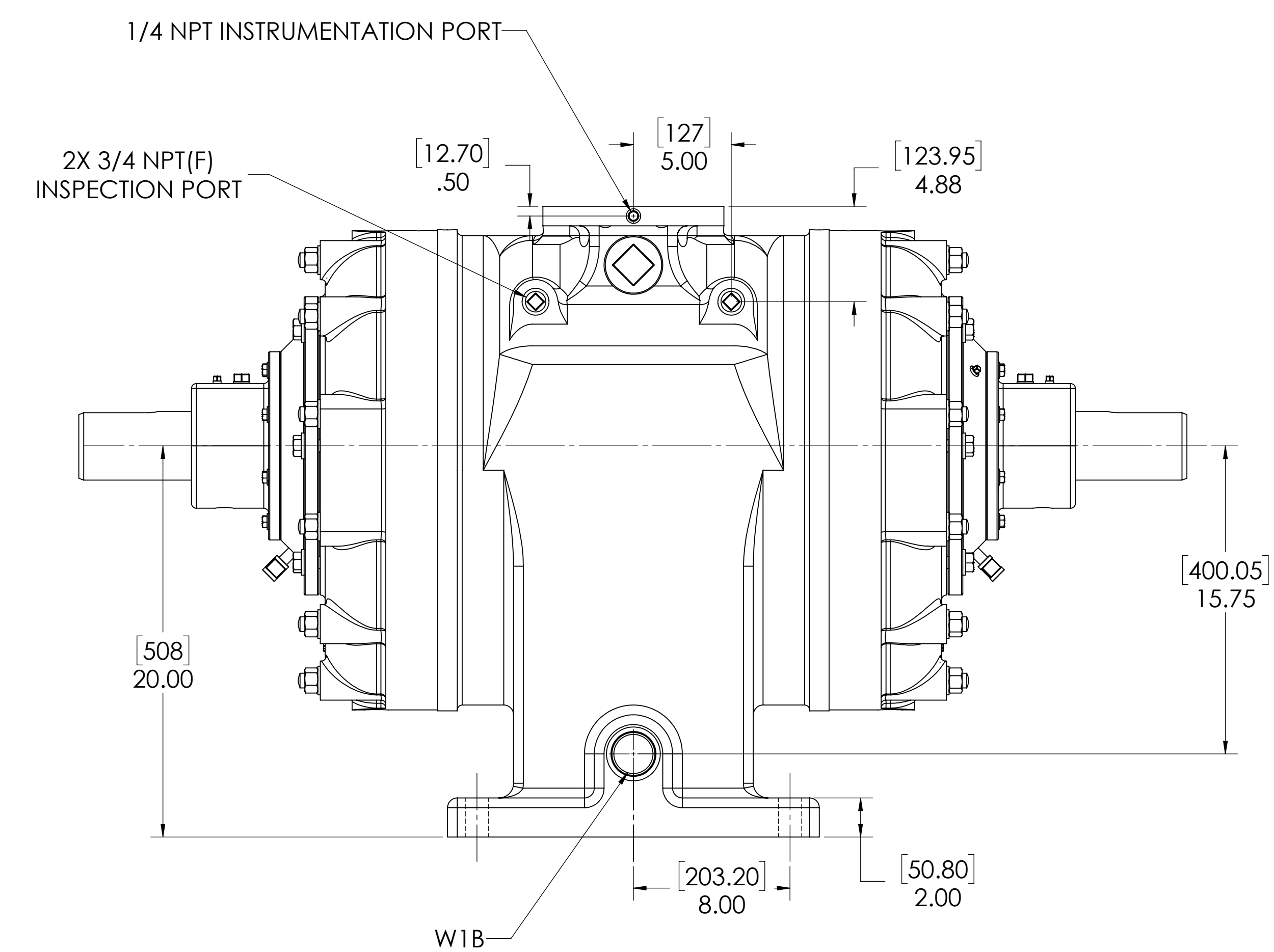
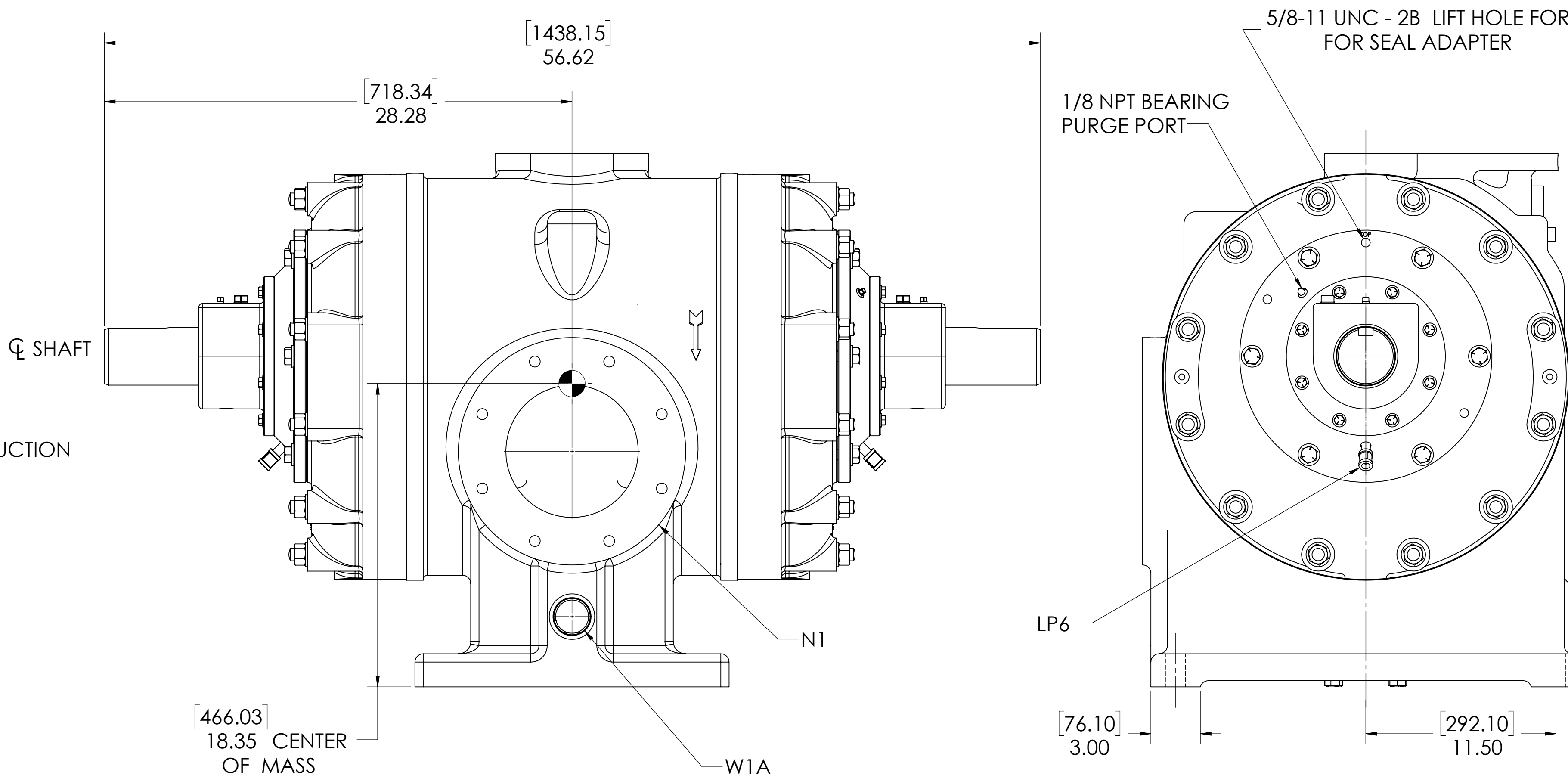
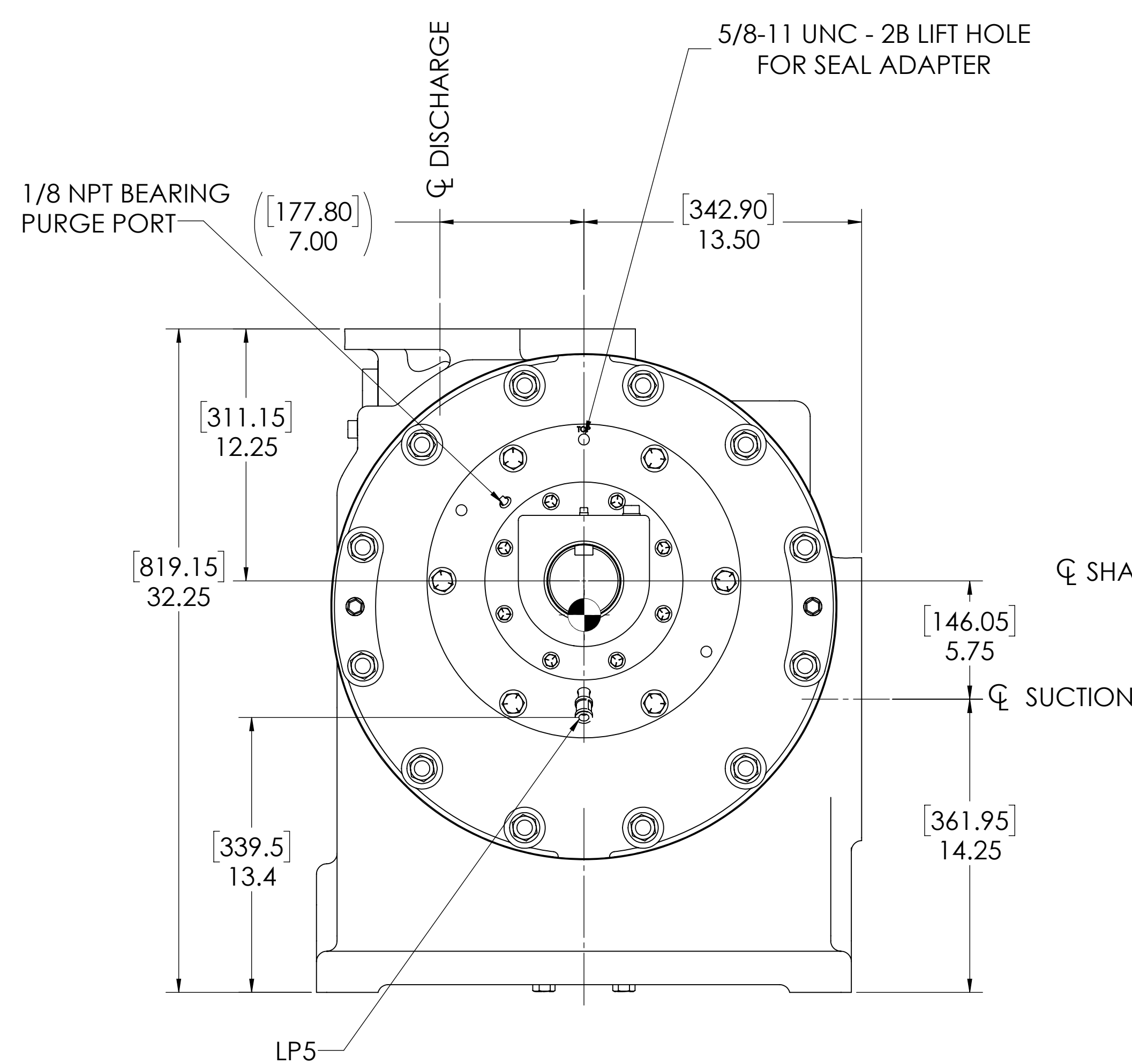
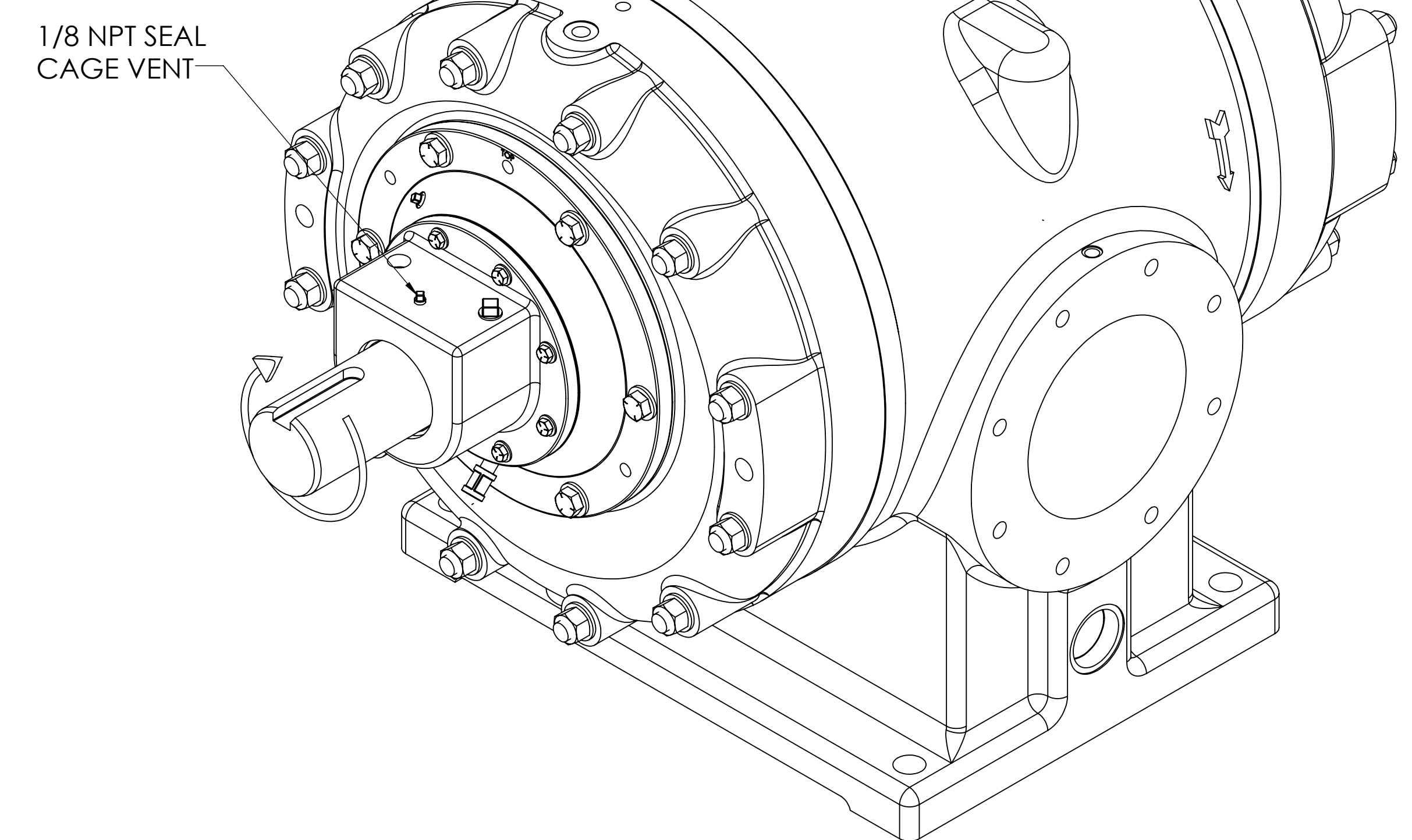
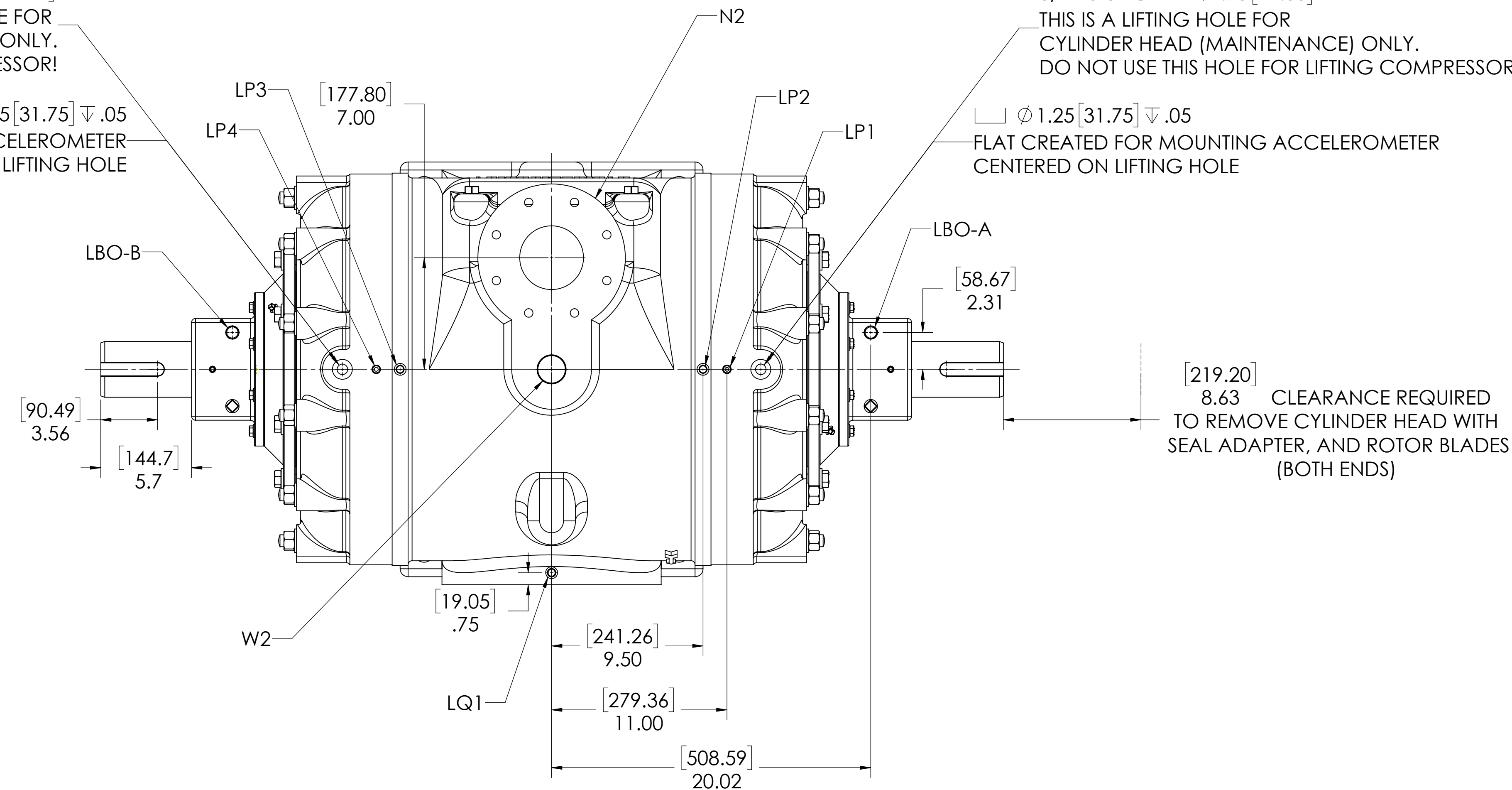
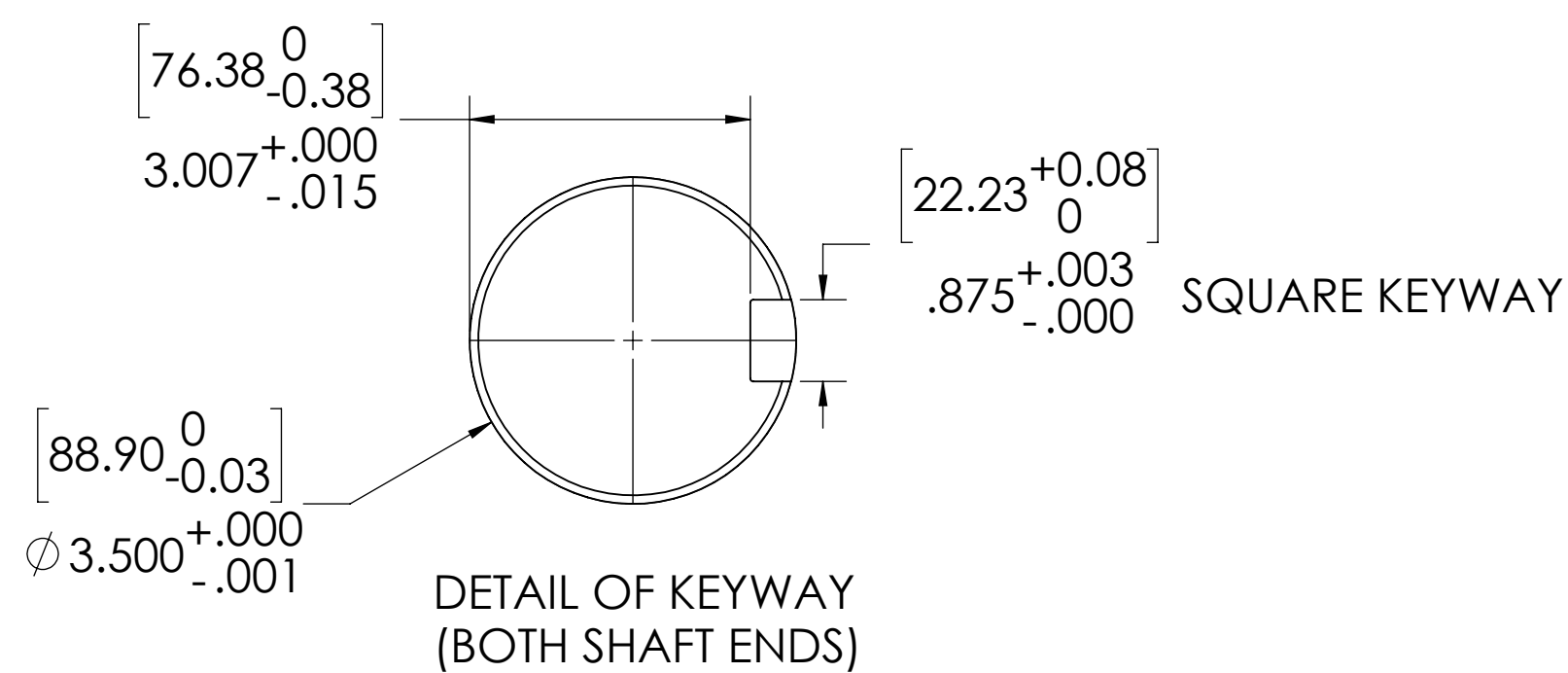


3/4-10 UNC - 2B ∇ .75 [19.05]
THIS IS A LIFTING HOLE FOR
CYLINDER HEAD (MAINTENANCE) ONLY.
DO NOT USE THIS HOLE FOR LIFTING COMPRESSOR!

\square ϕ 1.25 [31.75] ∇ .05
FLAT CREATED FOR MOUNTING ACCELEROMETER
CENTERED ON LIFTING HOLE

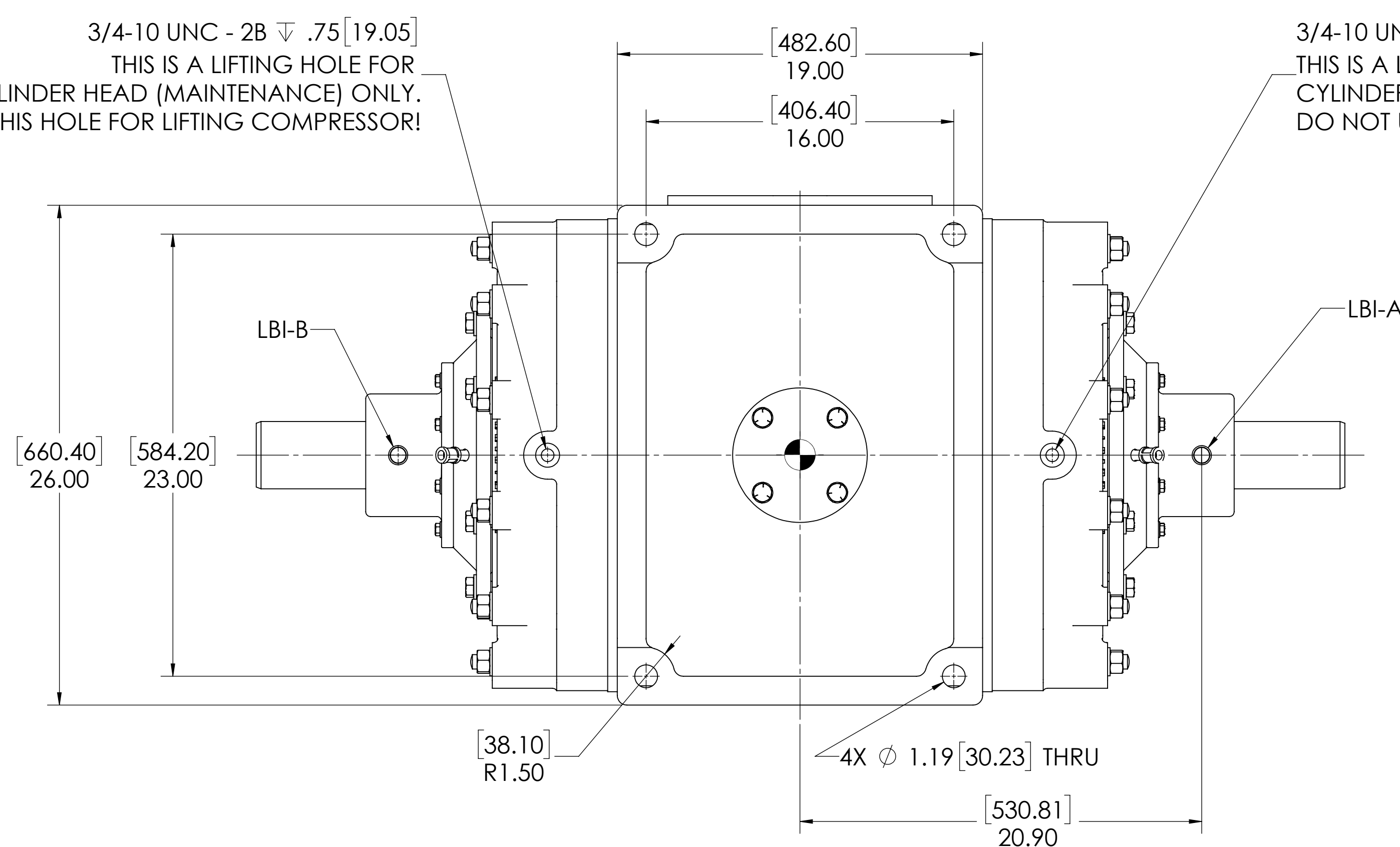
3/4-10 UNC - 2B ∇ .75 [19.05]
THIS IS A LIFTING HOLE FOR
CYLINDER HEAD (MAINTENANCE) ONLY.
DO NOT USE THIS HOLE FOR LIFTING COMPRESSOR!

\square ϕ 1.25 [31.75] ∇ .05
FLAT CREATED FOR MOUNTING ACCELEROMETER
CENTERED ON LIFTING HOLE



3/4-10 UNC - 2B ∇ .75 [19.05]
THIS IS A LIFTING HOLE FOR
CYLINDER HEAD (MAINTENANCE) ONLY.
DO NOT USE THIS HOLE FOR LIFTING COMPRESSOR!

3/4-10 UNC - 2B ∇ .75 [19.05]
THIS IS A LIFTING HOLE FOR
CYLINDER HEAD (MAINTENANCE) ONLY.
DO NOT USE THIS HOLE FOR LIFTING COMPRESSOR!



NOTES:

- CENTER OF MASS DIMENSIONS ARE APPROXIMATE
- EITHER WATER INLET MAY BE USED, DEPENDING UPON SYSTEM NEEDS
- WEIGHT IS APPROXIMATE
- DRAWING IS DUAL DIMENSION. DIMENSIONS WITHOUT BRACKETS ARE IN INCHES, DIMENSIONS IN [BRACKETS] ARE IN MILLIMETERS.

OIL CONNECTION POINTS SUMMARY

(REFER TO MANUAL FOR FURTHER INFORMATION)

DESCRIPTION	THREAD SIZE	QTY
LUBE QUILL (LQx)	1/4 NPT (F)	1
LUBE POINTS (LPx)	1/4 NPT (F)	6
SEAL SUPPLY (LBI-A, -B)	1/2 NPT (F)	2
SEAL RETURN (LBO-A, -B)	1/2 NPT (F)	2

	NOZZLE CONNECTIONS	BOLT HOLE SIZE
N1	8" GAS SUCTION FLANGE (ANSI CLASS 150 FLAT FACE)	8 x 3/4-10 ∇ 1.20
N2	4" GAS DISCHARGE FLANGE (ANSI CLASS 150 FLAT FACE)	8 x 5/8-11 ∇ 1.00
W1A	2 NPT (F) WATER INLET (SEE NOTE 2)	N/A
W1B	2 NPT (F) WATER INLET (SEE NOTE 2)	N/A
W2	1-1/2 NPT (F) WATER OUTLET	N/A

UNLESS OTHERWISE SPECIFIED:
DIMENSIONS ARE IN INCHES
TOLERANCES:
ANGULAR: MACH 3 DEG
CHAMFER: 45 DEG
HOLE PLACE DECIMAL: 1 1/32
HOLE PLACE DECIMAL: 1 1/32
HOLE PLACE DECIMAL: 1 1/32
HOLE PLACE DECIMAL: 1 1/32

PROPERTIES AND CONVERSIONS:
PROPERTY GEOMETRIC
TOLERANCE: PRE- AND
HARDEN
PROPERTY: OTHERS: NOTES

THE INFORMATION CONTAINED IN THIS DRAWING IS THE SOLE PROPERTY OF RO-FLO COMPRESSORS, LLC. IT IS TO BE USED ONLY FOR THE MANUFACTURE OF RO-FLO COMPRESSORS, LLC'S PRODUCTS.

NAME: _____ DATE: _____
DRAWN: TRF 1/13/2020
CHECKED: TRF 1/13/2020
ENG APP: TRF 1/13/2020

GENERAL ARRANGEMENT,
219M,DBS

REV
E 16-123-618-401 10

SCALE: 1:5 3050 LBS. 1 OF 1