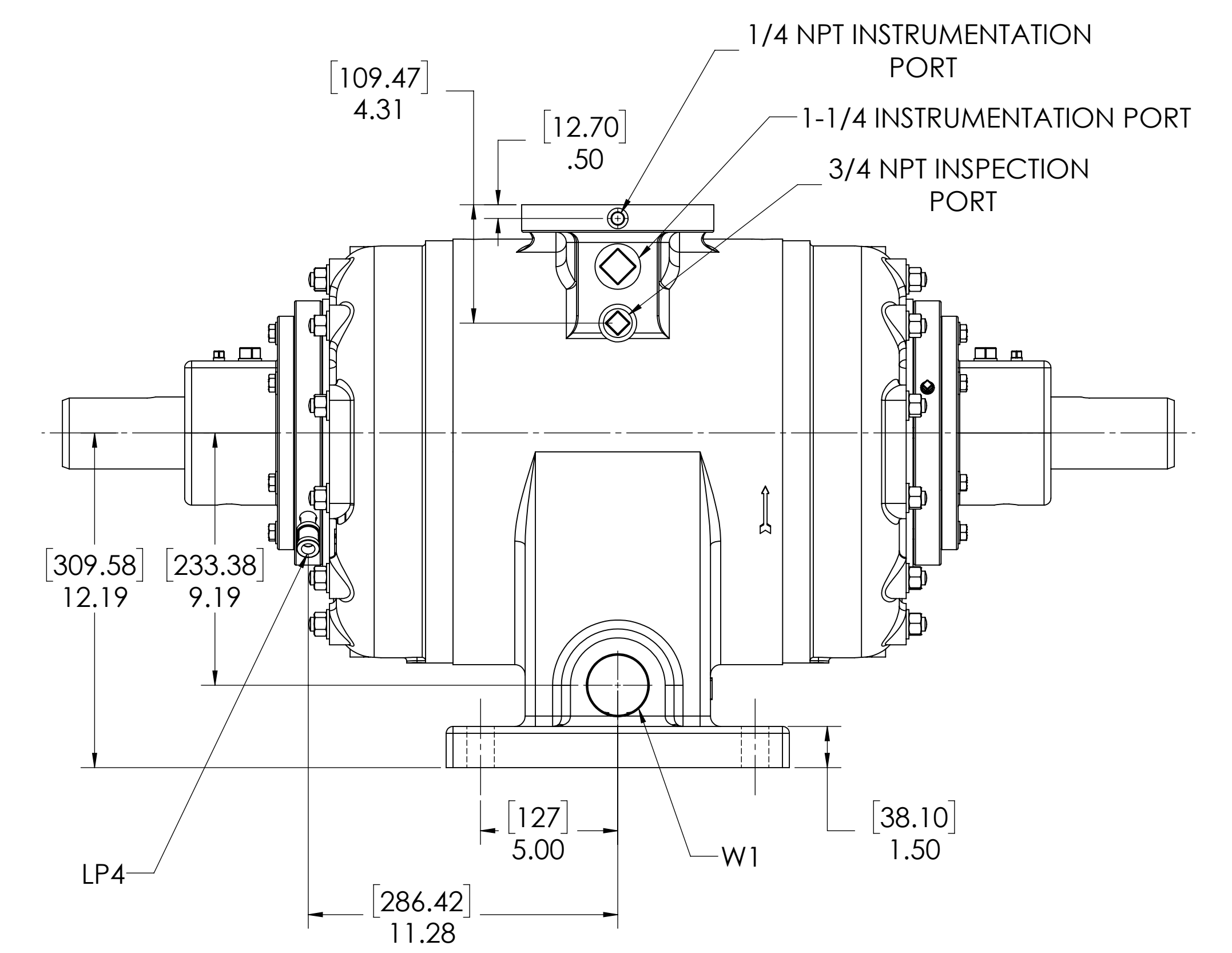
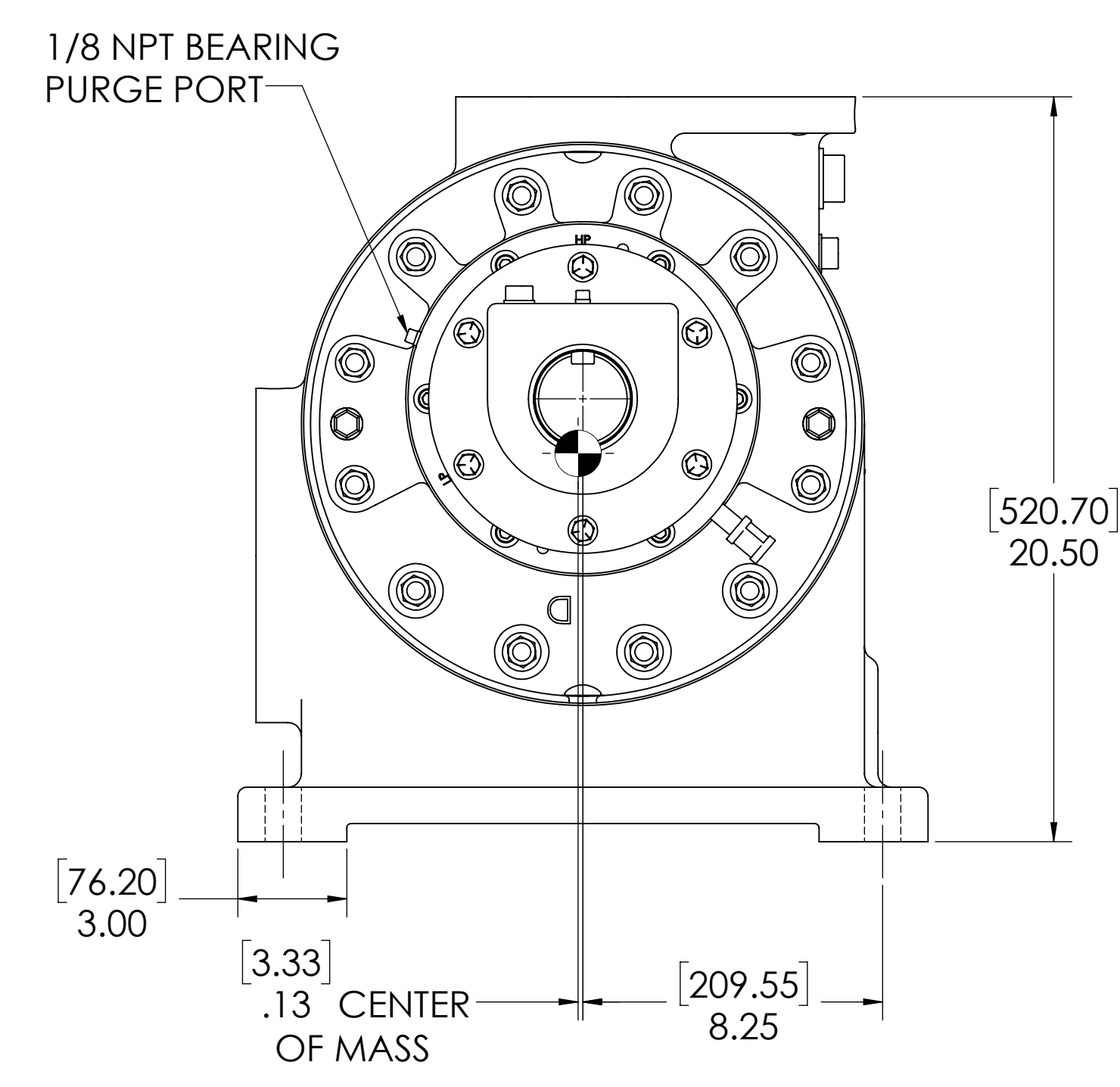
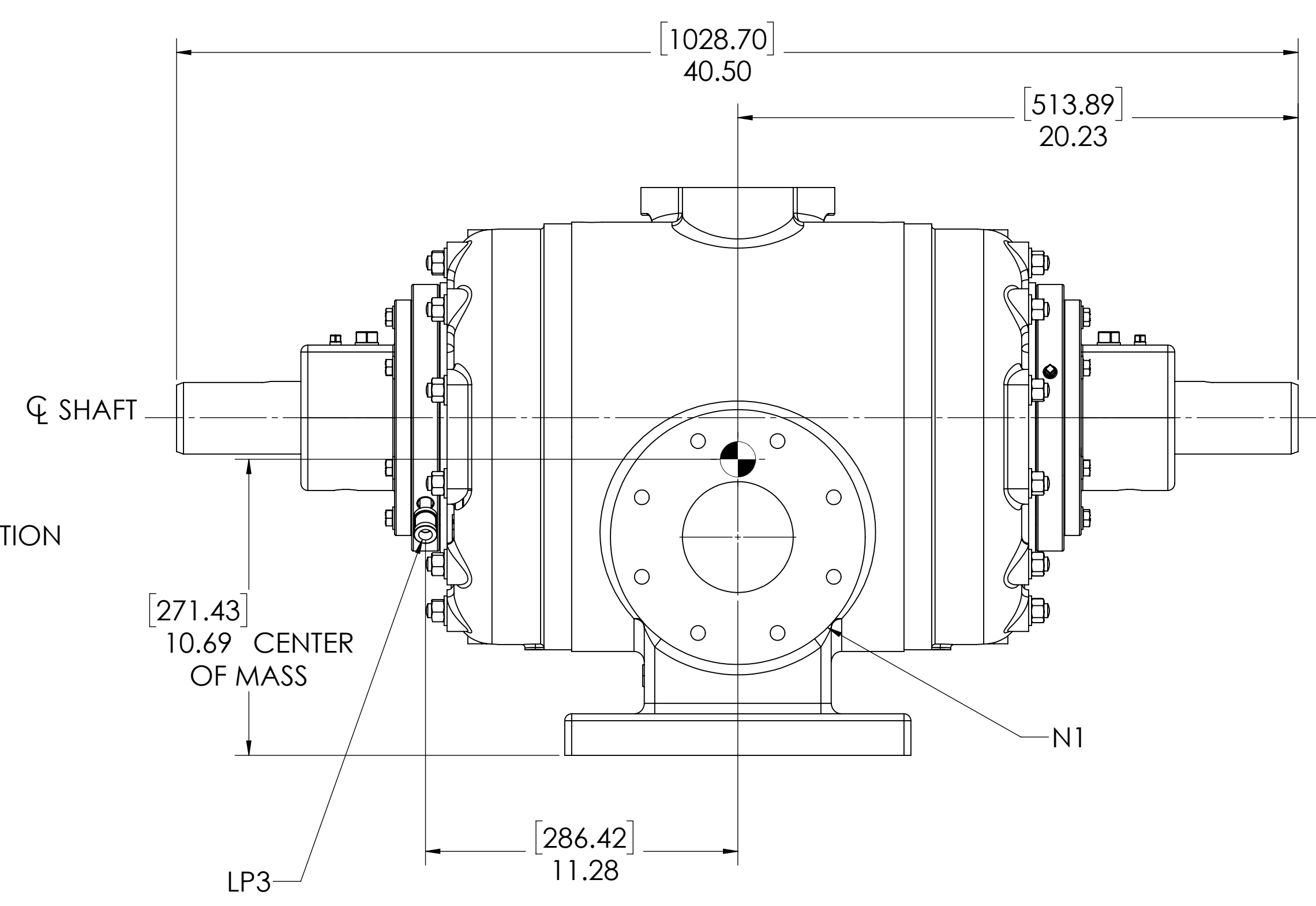
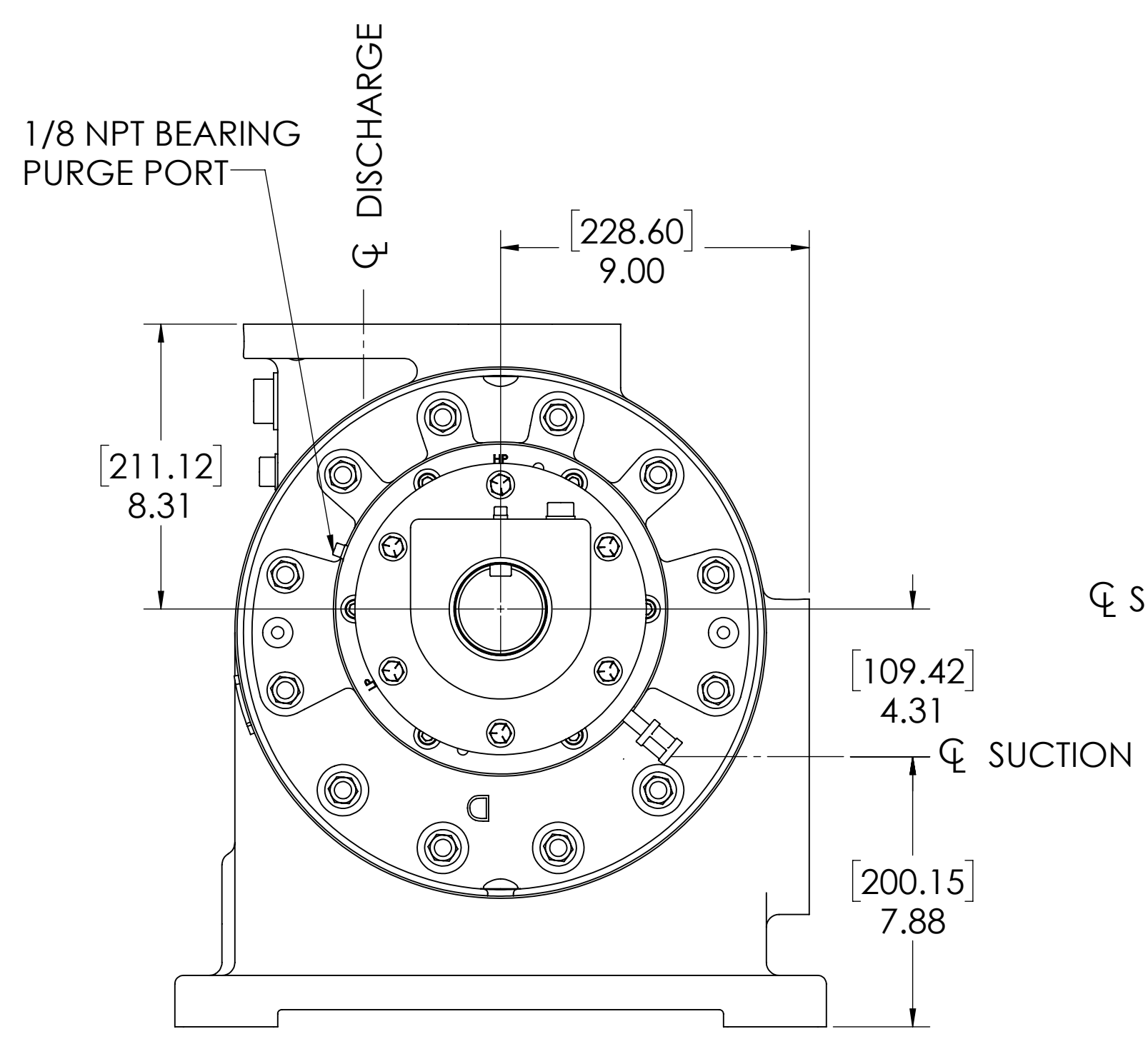
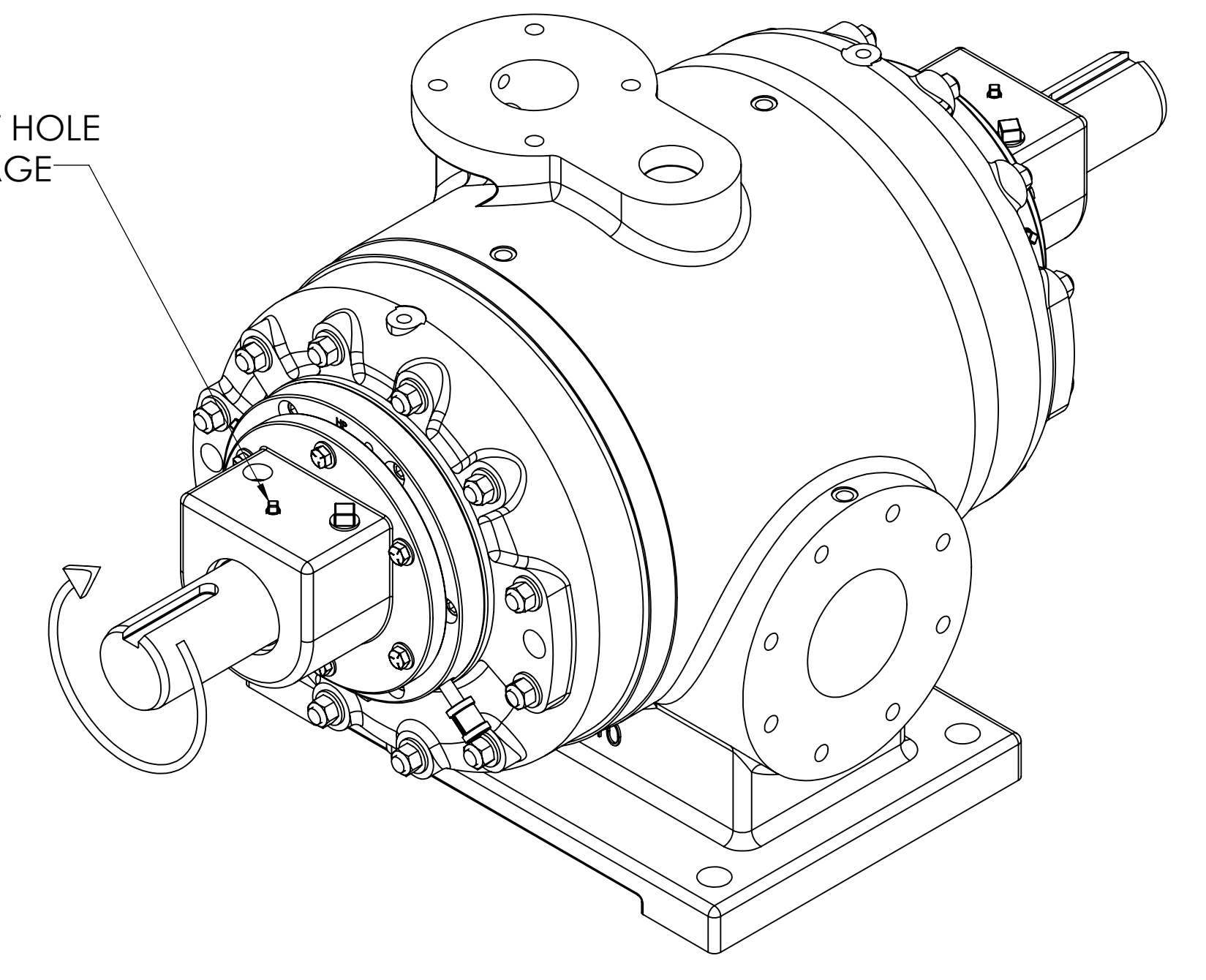
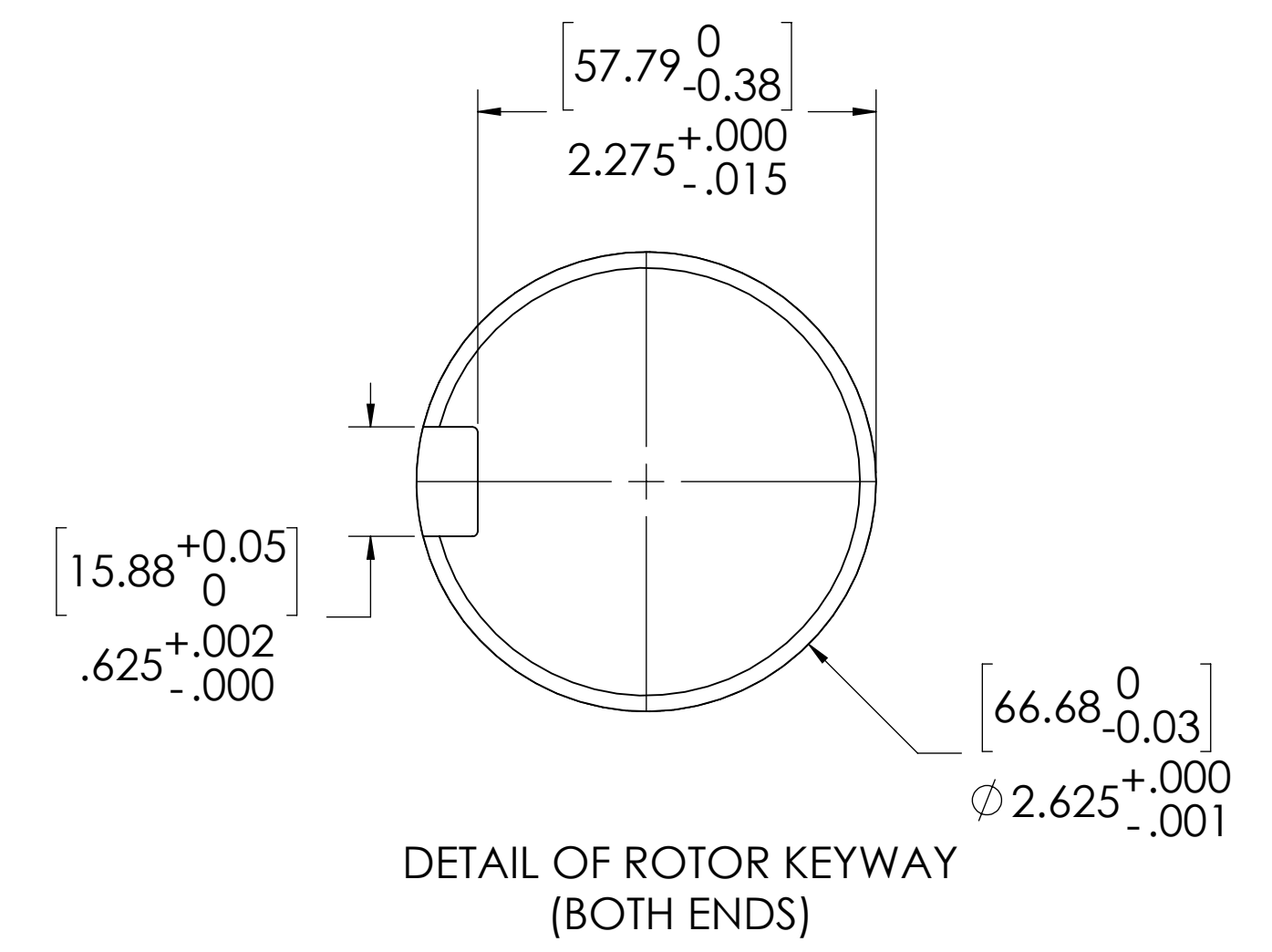
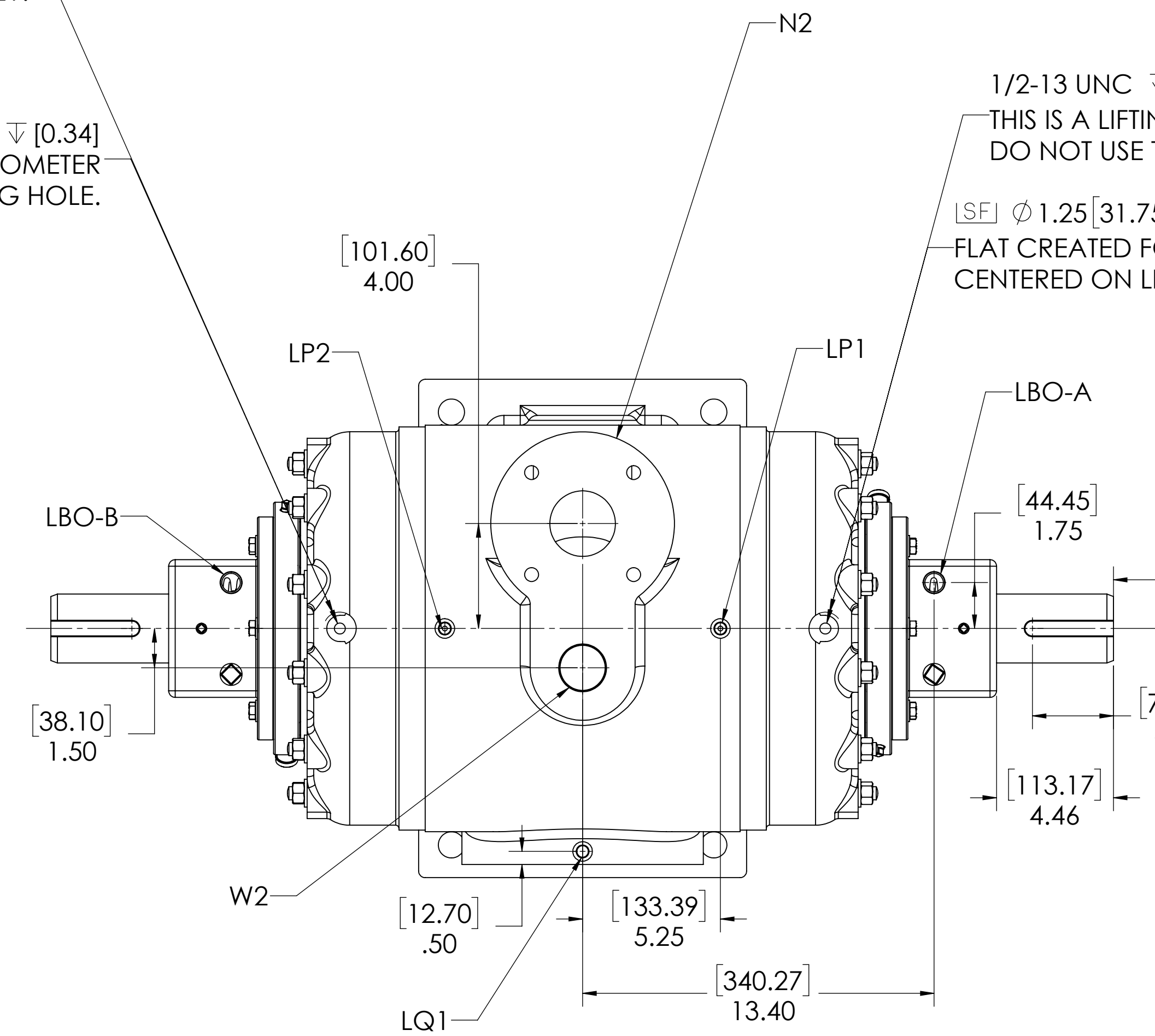


1/2-13 UNC ∇ .75 [19.05]
THIS IS A LIFTING HOLE FOR CYLINDER HEAD (MAINTENANCE) ONLY.
DO NOT USE THIS HOLE FOR LIFTING COMPRESSOR!

[31.75]
[SF] ϕ 1.25 ∇ .01 ∇ [0.34]
FLAT CREATED FOR MOUNTING ACCELEROMETER
CENTERED ON LIFTING HOLE.

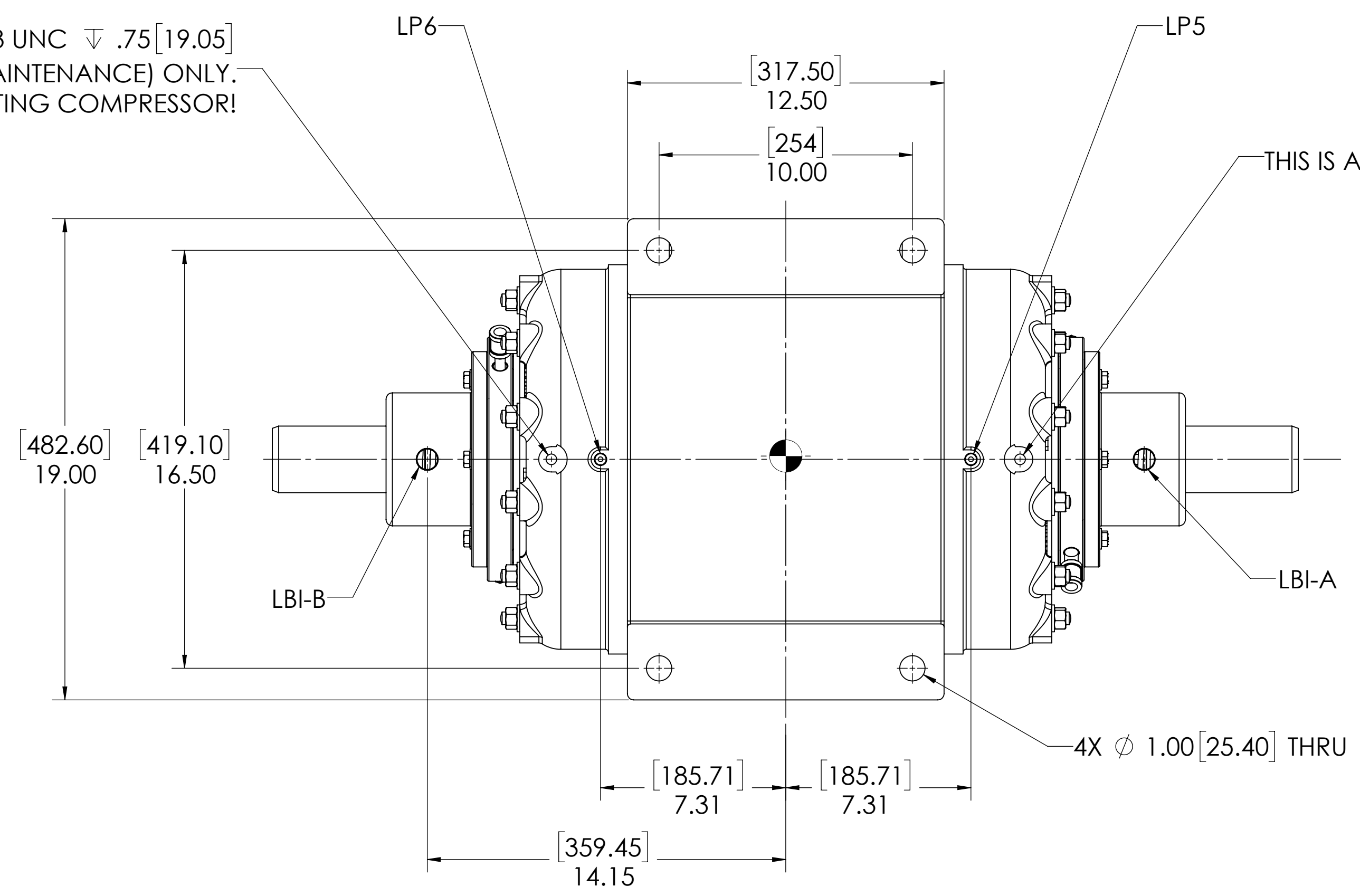
1/2-13 UNC ∇ .75 [19.05]
THIS IS A LIFTING HOLE FOR CYLINDER HEAD (MAINTENANCE) ONLY.
DO NOT USE THIS HOLE FOR LIFTING COMPRESSOR!

[SF] ϕ 1.25 [31.75] ∇ .01 [0.34]
FLAT CREATED FOR MOUNTING ACCELEROMETER
CENTERED ON LIFTING HOLE



1/2-13 UNC ∇ .75 [19.05]
THIS IS A LIFTING HOLE FOR CYLINDER HEAD (MAINTENANCE) ONLY.
DO NOT USE THIS HOLE FOR LIFTING COMPRESSOR!

1/2-13 UNC ∇ .75 [19.05]
THIS IS A LIFTING HOLE FOR CYLINDER HEAD (MAINTENANCE) ONLY.
DO NOT USE THIS HOLE FOR LIFTING COMPRESSOR!



	NOZZLE CONNECTIONS	BOLT HOLE SIZE
N1	4" GAS SUCTION FLANGE (ANSI CLASS 150 FLAT FACE)	8 x 5/8-11 ∇ 1.00
N2	2.5" GAS DISCHARGE FLANGE (ANSI CLASS 150 FLAT FACE)	4 x 5/8-11 ∇ 1.00
W1	2 NPT(F) WATER INLET (SEE NOTE 2)	N/A
W2	1-1/2 NPT(F) WATER OUTLET	N/A

OIL CONNECTION POINTS SUMMARY (REFER TO MANUAL FOR FURTHER INFORMATION)		
DESCRIPTION	THREAD SIZE	QTY
LUBE QUILL (LQx)	1/4 NPT (F)	1
LUBE POINTS(LPx)	1/4 NPT (F)	6
SEAL SUPPLY (LBI-A,-B)	1/2 NPT (F)	2
SEAL RETURN (LBO-A,-B)	1/2 NPT (F)	2

- NOTES:
- CENTER OF MASS DIMENSIONS ARE APPROXIMATE
 - WEIGHT IS APPROXIMATE
 - DRAWING IS DUAL DIMENSION. DIMENSIONS WITHOUT BRACKETS ARE IN INCHES, DIMENSIONS IN [BRACKETS] ARE IN MILLIMETERS

UNLESS OTHERWISE SPECIFIED: DIMENSIONS ARE IN INCHES TOLERANCES: ANGULAR: MACH 2 DEG CHAMFER: 1:30 HOLE: H9/D9 HOLE: H8/D8 HOLE: H7/D7 HOLE: H6/D6 HOLE: H5/D5 HOLE: H4/D4 HOLE: H3/D3 HOLE: H2/D2 HOLE: H1/D1	DATE: 12/30/2019 DRAWN: TRF CHECKED: TRF ENG APP: TRF PROPERTARY AND CONFIDENTIAL	
<p>THE INFORMATION CONTAINED IN THIS DRAWING IS THE SOLE PROPERTY OF RO-FLO COMPRESSORS, LLC. ANY REPRODUCTION IN PART OR AS A WHOLE WITHOUT THE WRITTEN PERMISSION OF RO-FLO COMPRESSORS, LLC IS PROHIBITED.</p>	<p>GENERAL ARRANGEMENT, 210M, DBS</p>	<p>REV 09</p>
<p>16-123-618-402</p>	<p>1:4</p>	<p>860 LBS.</p>