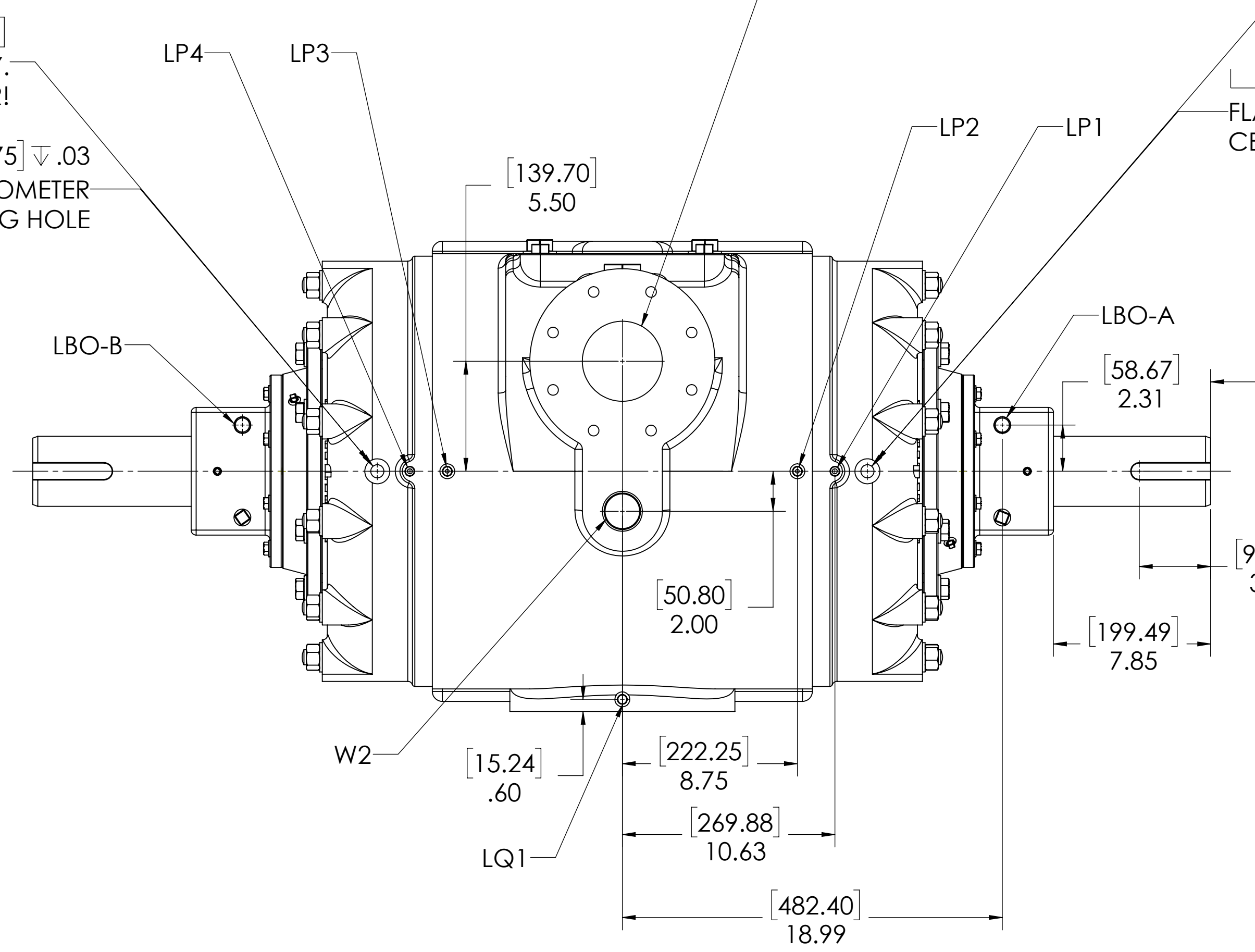
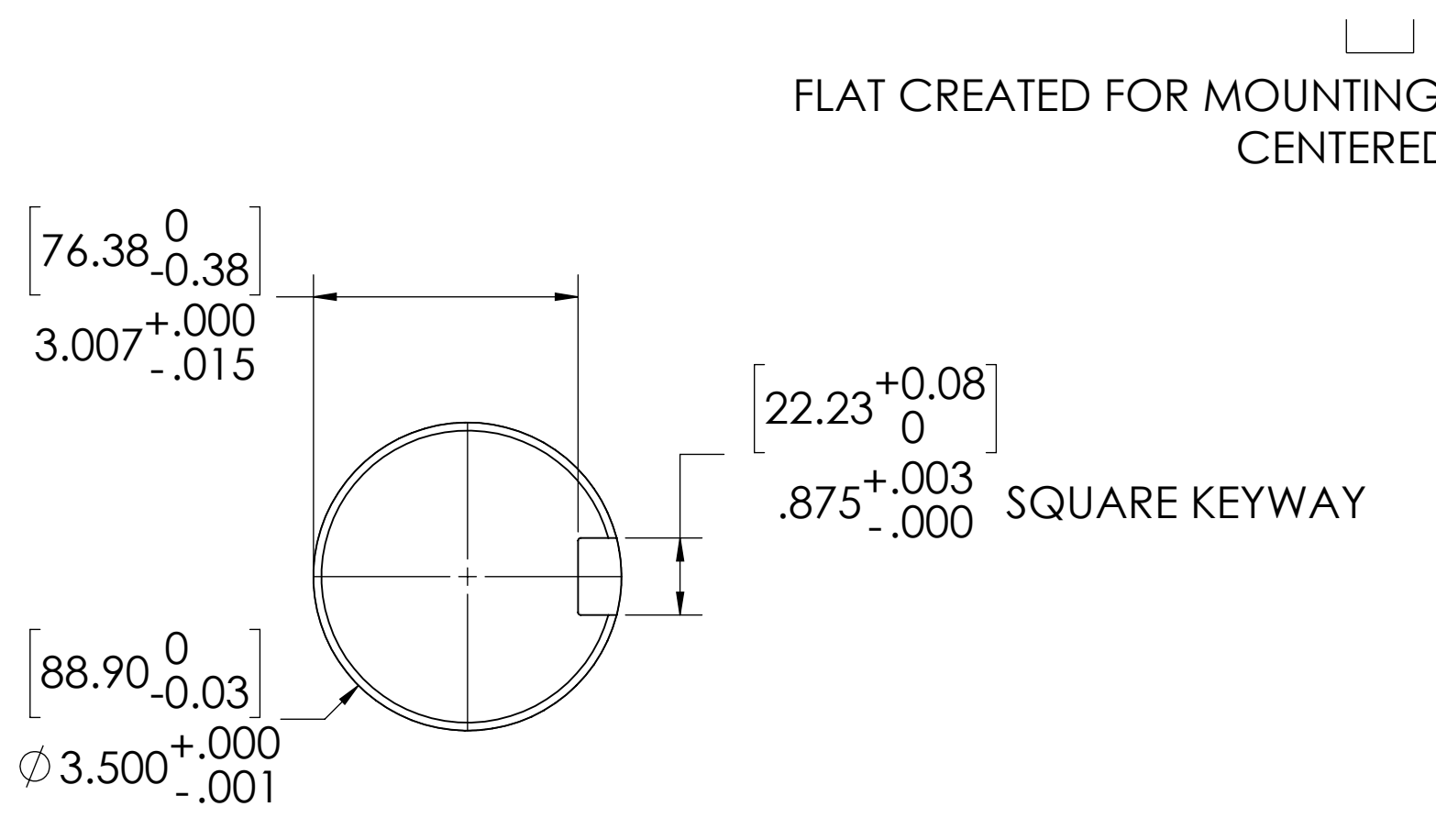


8 7 6 5 4 3 2 1

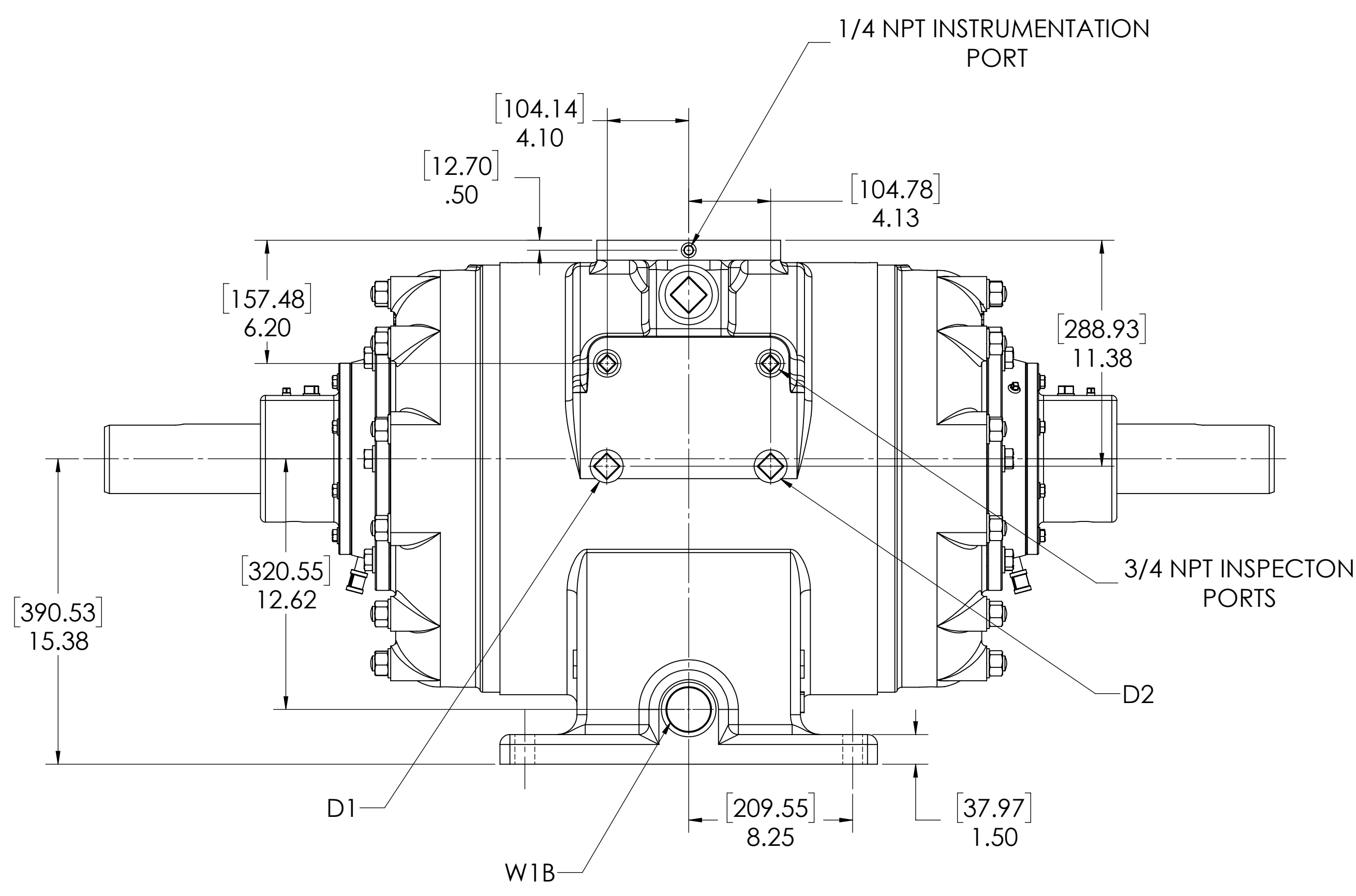
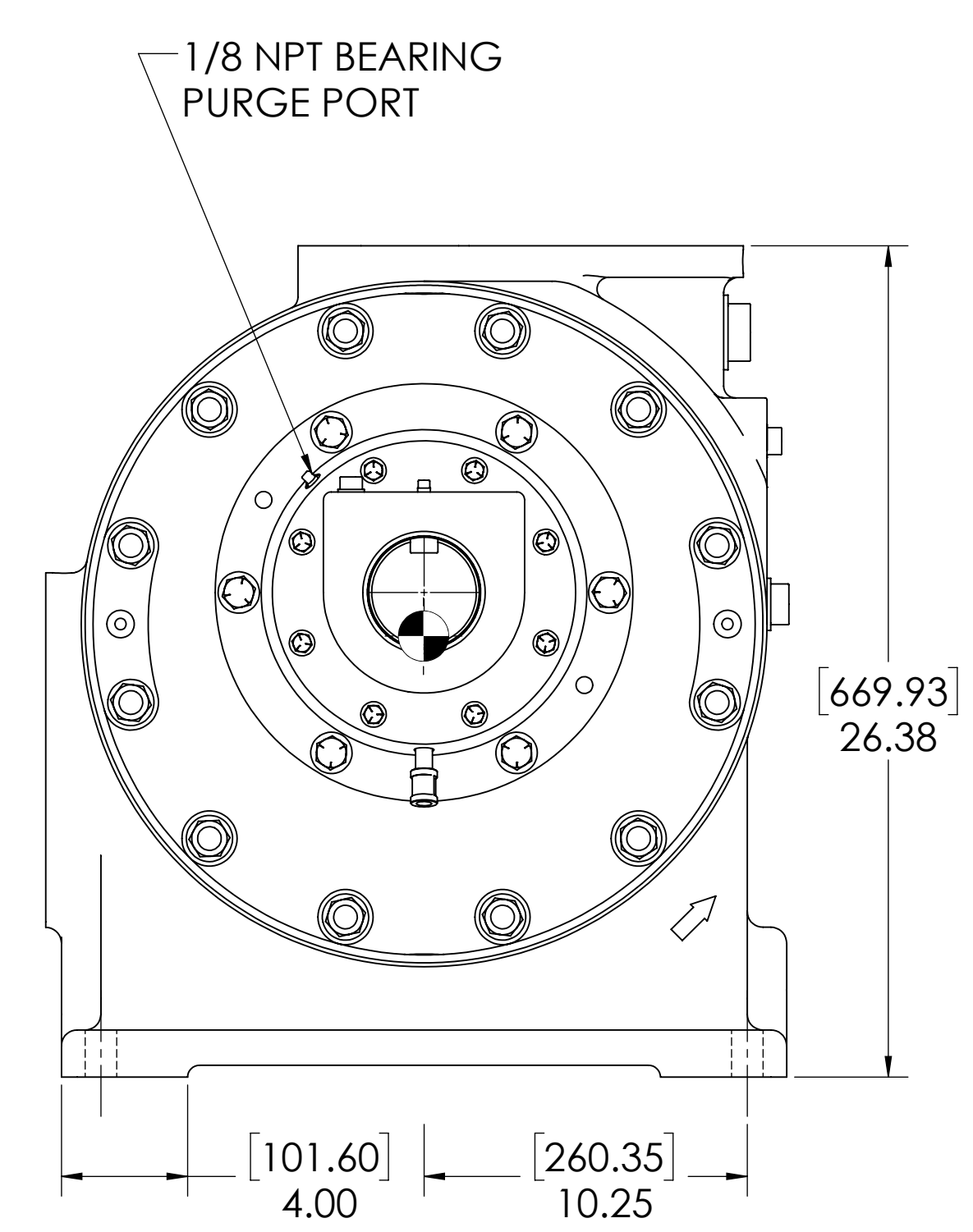
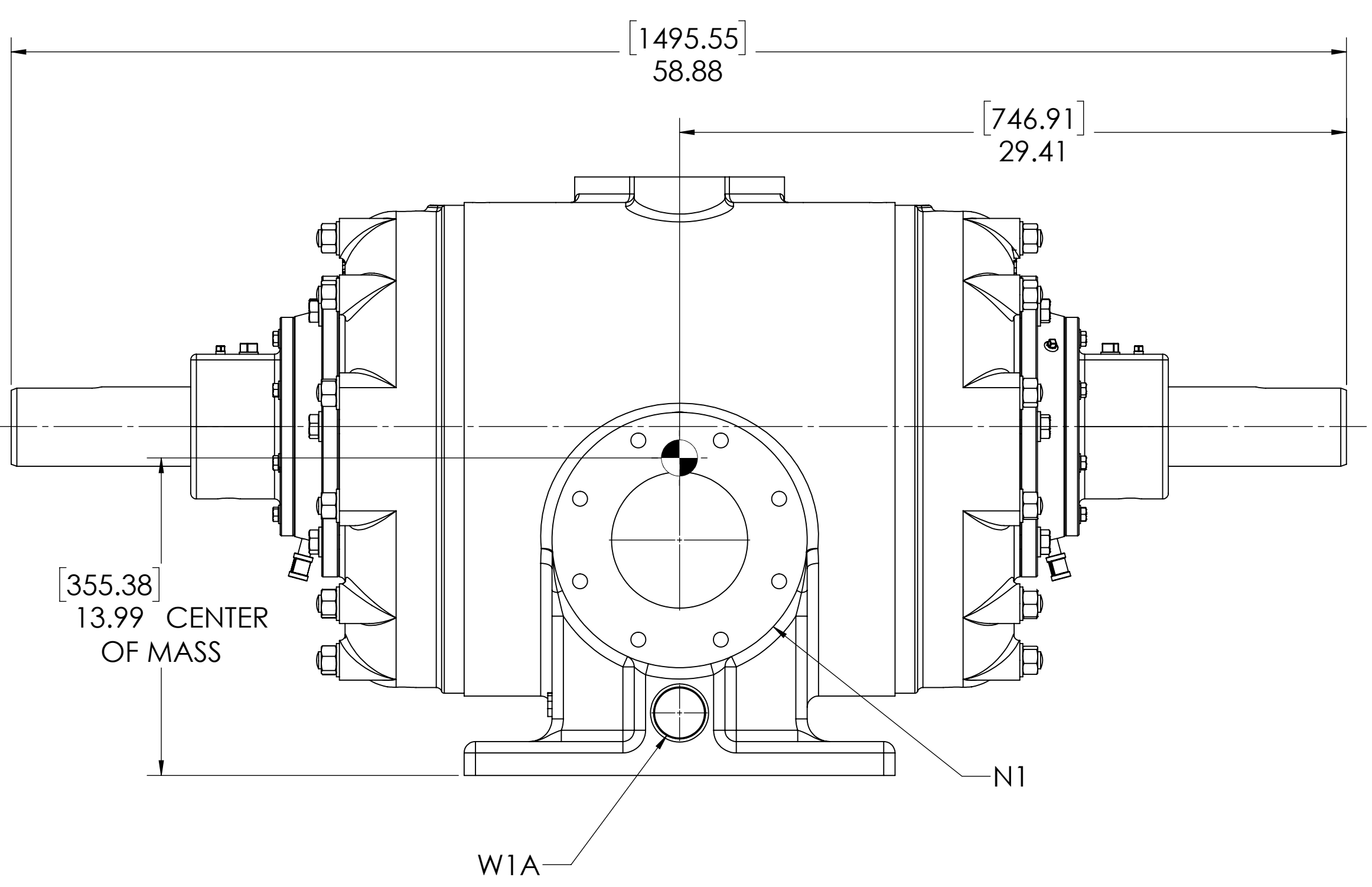
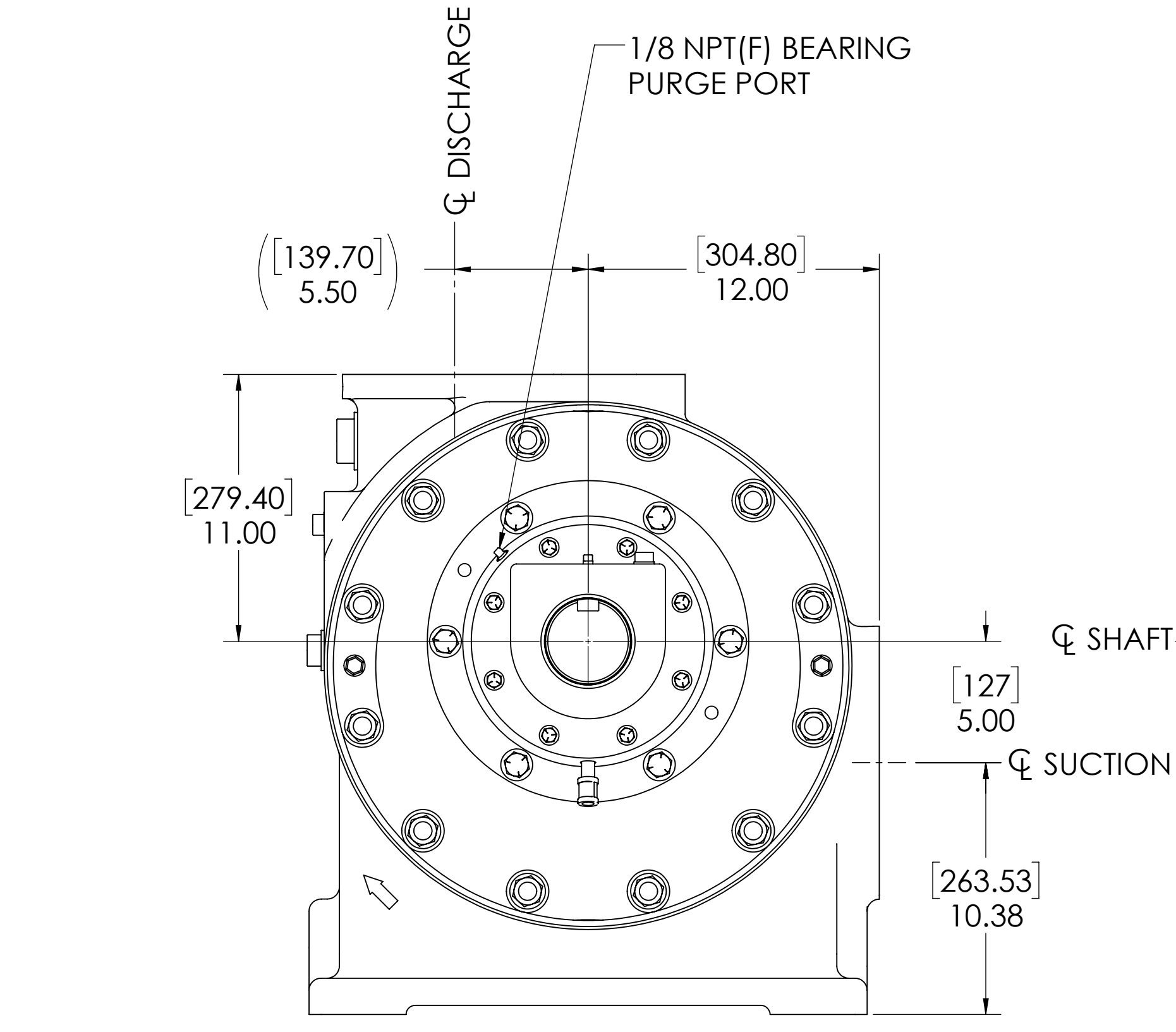
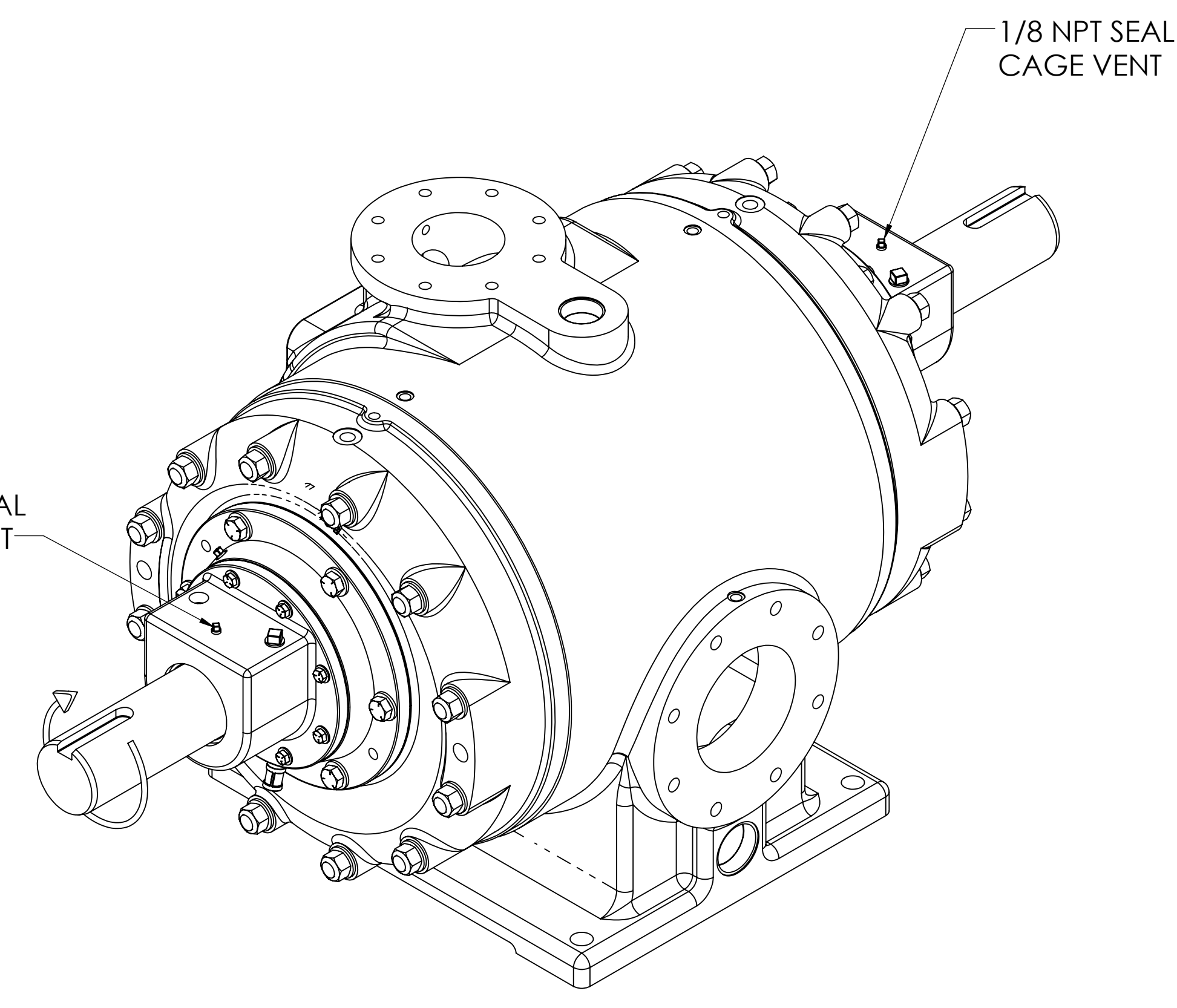
3/4-10 UNC - 2B  $\nabla$  .75 [19.05]  
THIS IS A LIFTING HOLE FOR CYLINDER HEAD (MAINTENANCE) ONLY.  
DO NOT USE THIS HOLE FOR LIFTING COMPRESSOR!



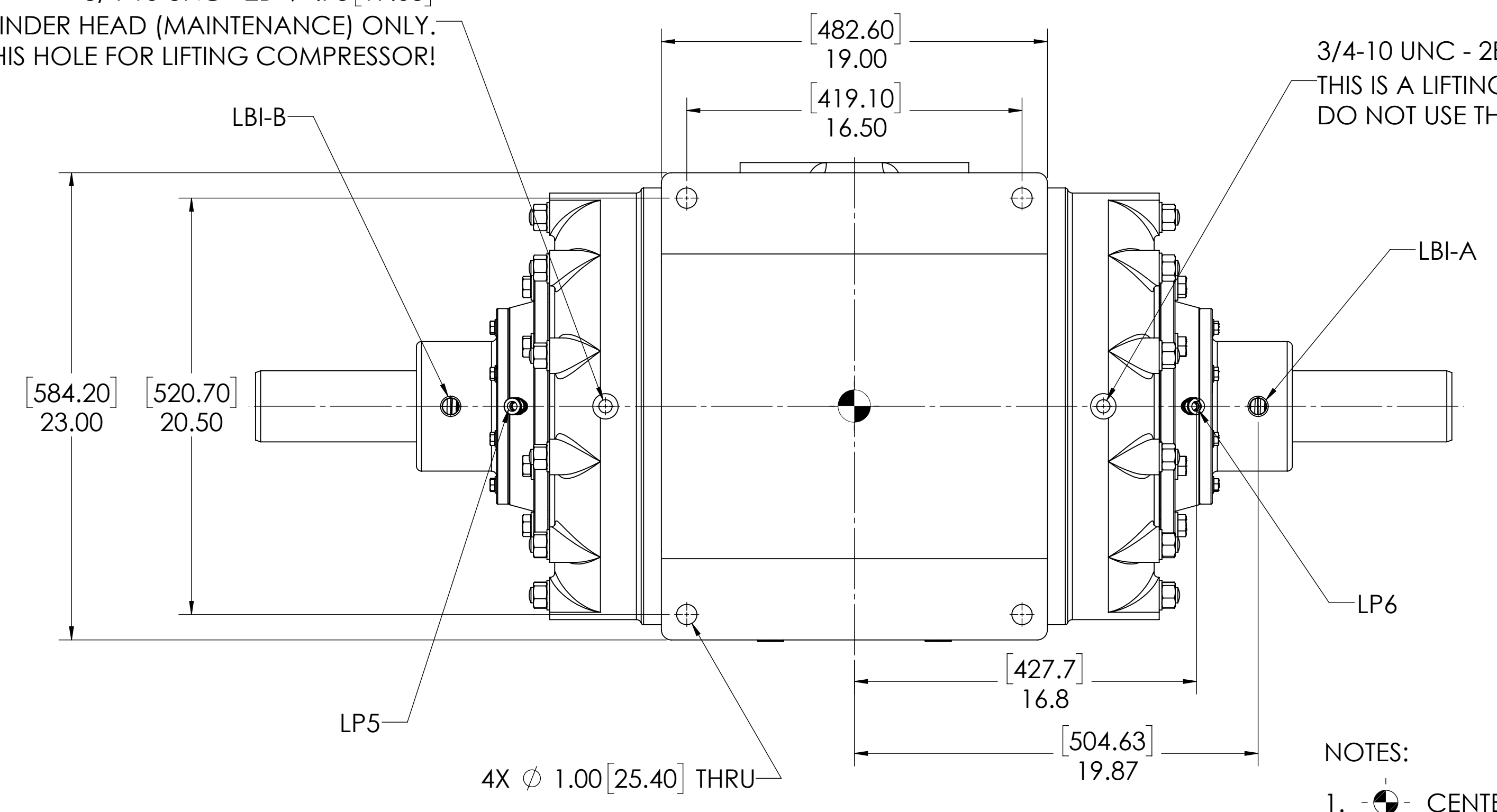
3/4-10 UNC - 2B  $\nabla$  .75 [19.05]  
THIS IS A LIFTING HOLE FOR CYLINDER HEAD (MAINTENANCE) ONLY.  
DO NOT USE THIS HOLE FOR LIFTING COMPRESSOR!

$\square$   $\phi$  1.25 [31.75]  $\nabla$  .03  
FLAT CREATED FOR MOUNTING ACCELEROMETER  
CENTERED ON LIFTING HOLE

[206.50] 8.13 CLEARANCE REQUIRED TO REMOVE CYLINDER HEAD, SEAL ADAPTER, AND ROTOR BLADES



3/4-10 UNC - 2B  $\nabla$  .75 [19.05]  
THIS IS A LIFTING HOLE FOR CYLINDER HEAD (MAINTENANCE) ONLY.  
DO NOT USE THIS HOLE FOR LIFTING COMPRESSOR!



3/4-10 UNC - 2B  $\nabla$  .75 [19.05]  
THIS IS A LIFTING HOLE FOR CYLINDER HEAD (MAINTENANCE) ONLY.  
DO NOT USE THIS HOLE FOR LIFTING COMPRESSOR!

**OIL CONNECTION POINTS SUMMARY**  
(REFER TO MANUAL FOR FURTHER INFORMATION)

DESCRIPTION	THREAD SIZE	QTY
LUBE QUILL (LQx)	1/4 NPT (F)	1
LUBE POINTS (LPx)	1/4 NPT (F)	6
SEAL SUPPLY (LBI-A, LBI-B)	1/2 NPT (F)	2
SEAL RETURN (LBO-A, LBO-B))	1/2 NPT (F)	2

	NOZZLE CONNECTIONS	BOLT HOLE SIZE
N1	6" GAS SUCTION FLANGE (ANSI CLASS 150 FLAT FACE)	8 x 3/4-10 $\nabla$ 1.20
N2	4" GAS DISCHARGE FLANGE (ANSI CLASS 150 FLAT FACE)	8 x 5/8-11 $\nabla$ 1.00
W1A	2 NPT(F) WATER INLET (SEE NOTE 2)	N/A
W1B	2 NPT(F) WATER INLET (SEE NOTE 2)	N/A
W2	1-1/2 NPT(F) WATER OUTLET	N/A
D1	1-1/4 NPT(F) DRAIN HOLE	N/A
D2	1-1/4 NPT(F) DRAIN HOLE	N/A

- NOTES:
- CENTER OF MASS DIMENSIONS ARE APPROXIMATE
  - EITHER WATER INLET MAY BE USED, DEPENDING UPON SYSTEM NEEDS
  - WEIGHT IS APPROXIMATE
  - DRAWING IS DUAL DIMENSION. DIMENSIONS WITHOUT BRACKETS ARE IN INCHES, DIMENSIONS IN [BRACKETS] ARE IN MILLIMETERS.
  - USE SEAL OIL RETURN PORTS (LBO-A, LBO-B) AS SHOWN IN TOP VIEW.

UNLESS OTHERWISE SPECIFIED: DIMENSIONS ARE IN INCHES UNLESS INDICATED. ANGULAR TOLERANCES: 1.500 1/16 PLACE DECIMAL. 1.500 1/16 PLACE DECIMAL. 1.500 1/16 PLACE DECIMAL. 1.500 1/16 PLACE DECIMAL.

PROPERTY AND CONFIDENTIALITY: THIS INFORMATION IS THE PROPERTY OF RO-FLO COMPRESSORS, LLC. IT IS TO BE KEPT CONFIDENTIAL AND NOT REPRODUCED IN PART OR AS A WHOLE WITHOUT THE WRITTEN PERMISSION OF RO-FLO COMPRESSORS, LLC. IT IS PROHIBITED.

Ro-Flo Compressors, LLC  
TITLE: GENERAL ARRANGEMENT, 217M, DBS-DOUBLE EXTENSION  
DATE: 12/20/2019  
SCALE: 1:5  
SHEET: 1 OF 1