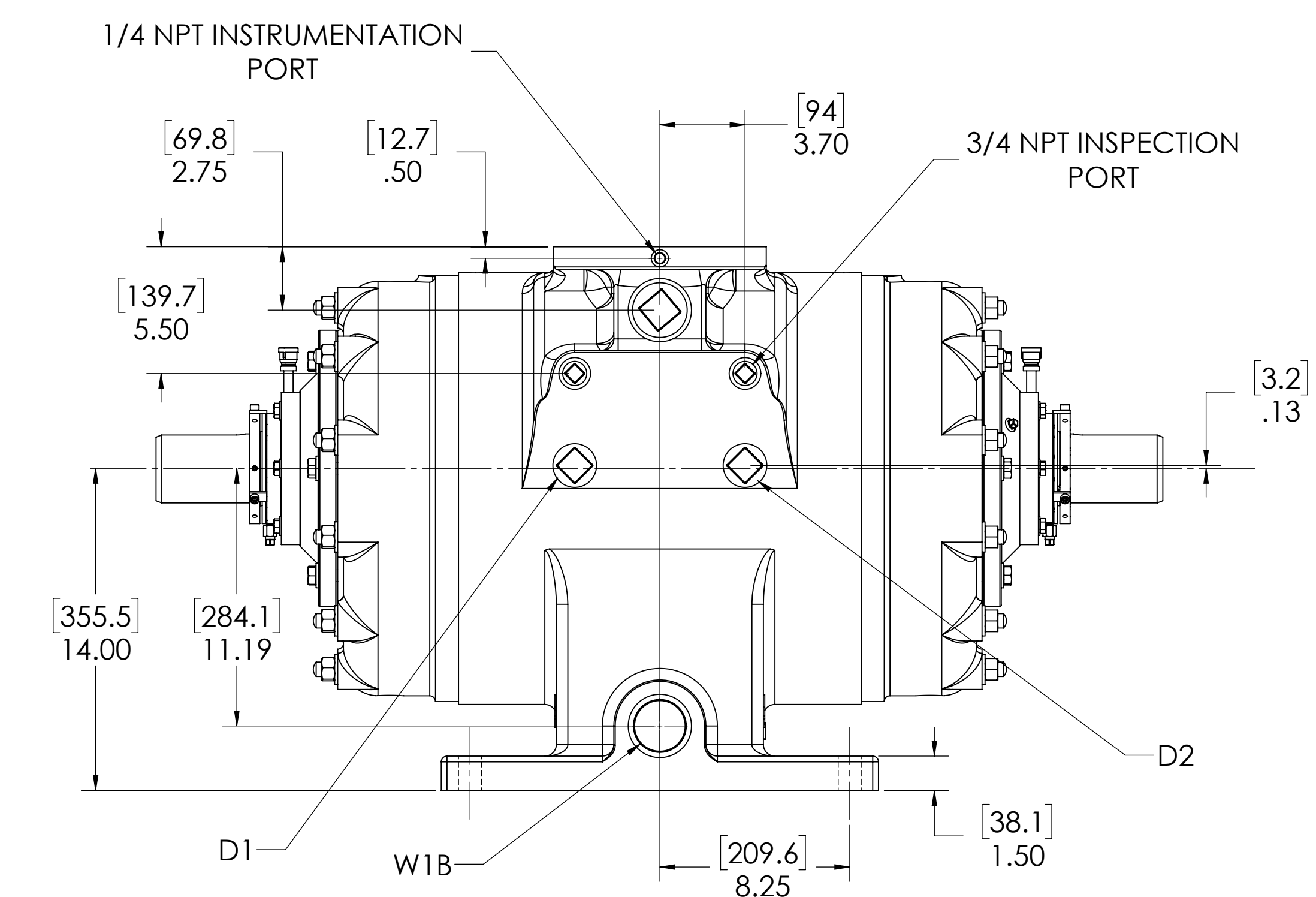
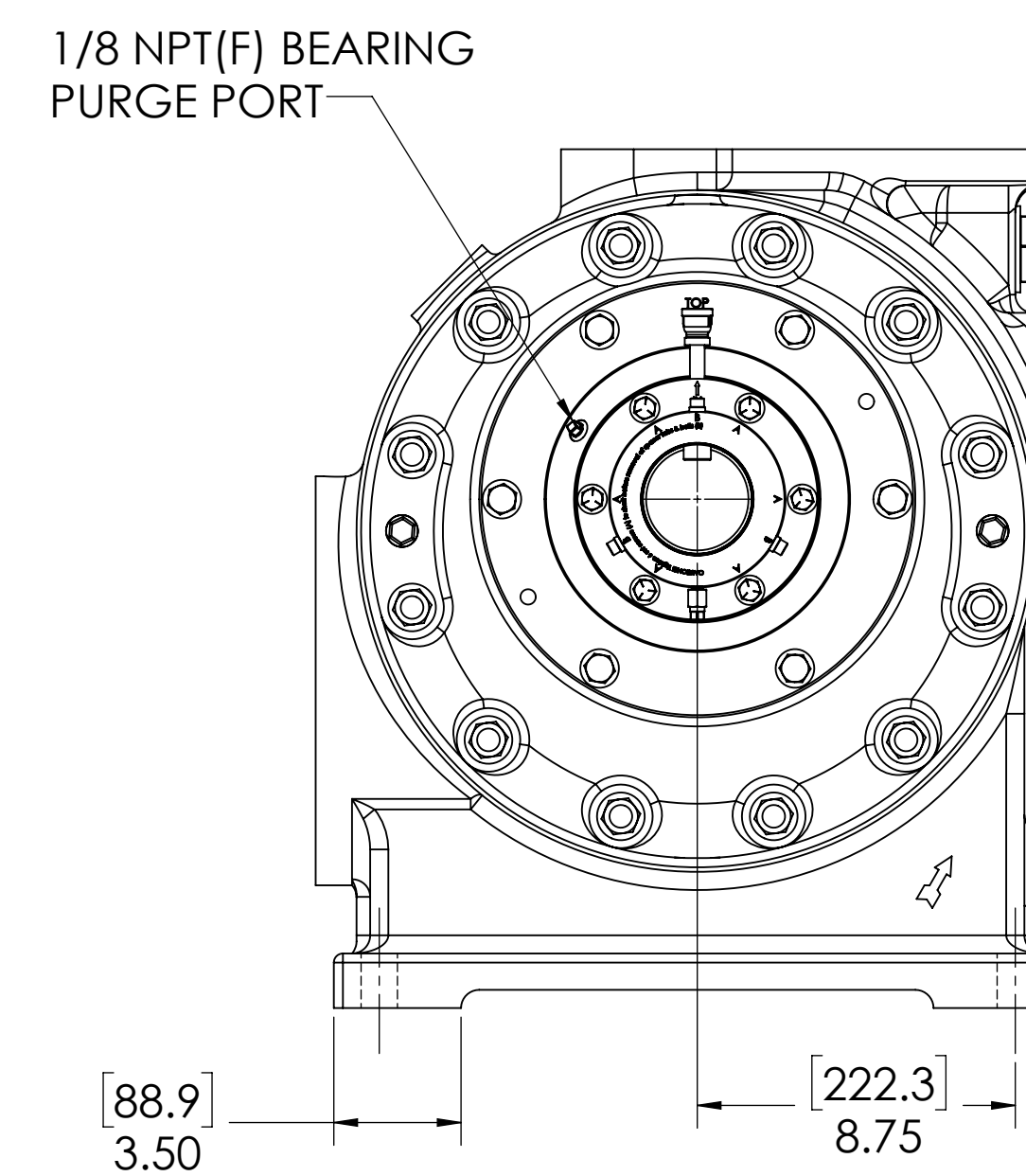
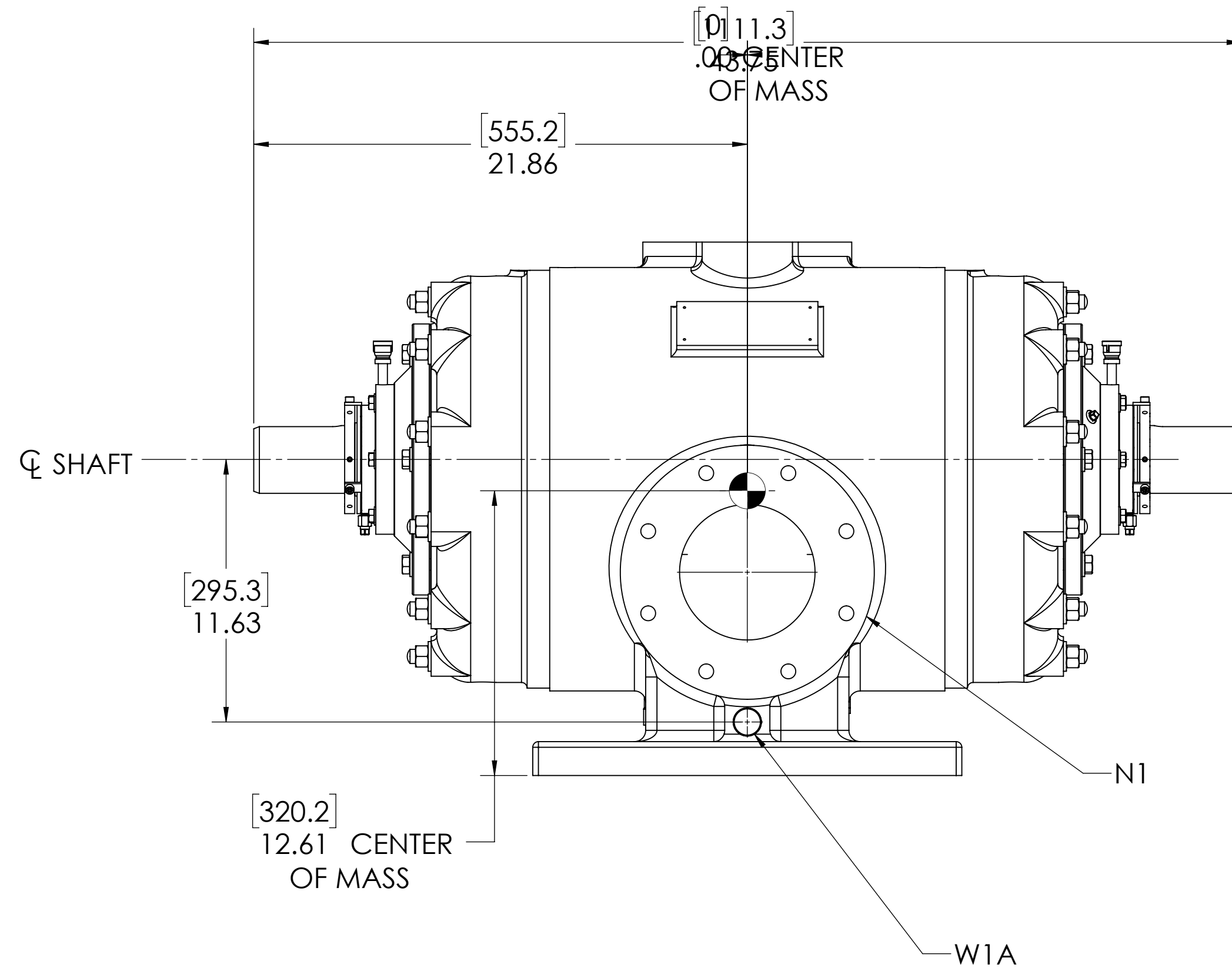
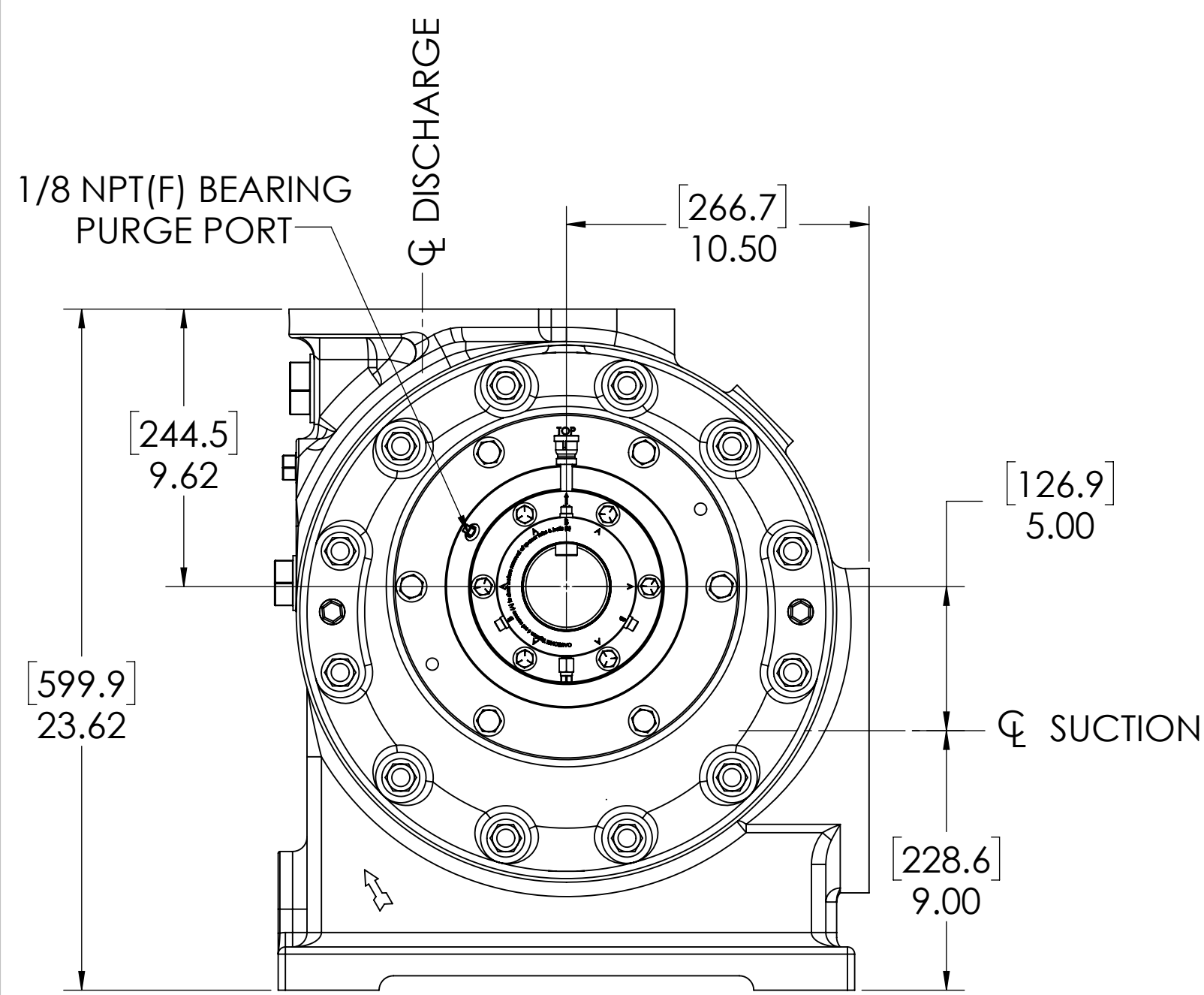
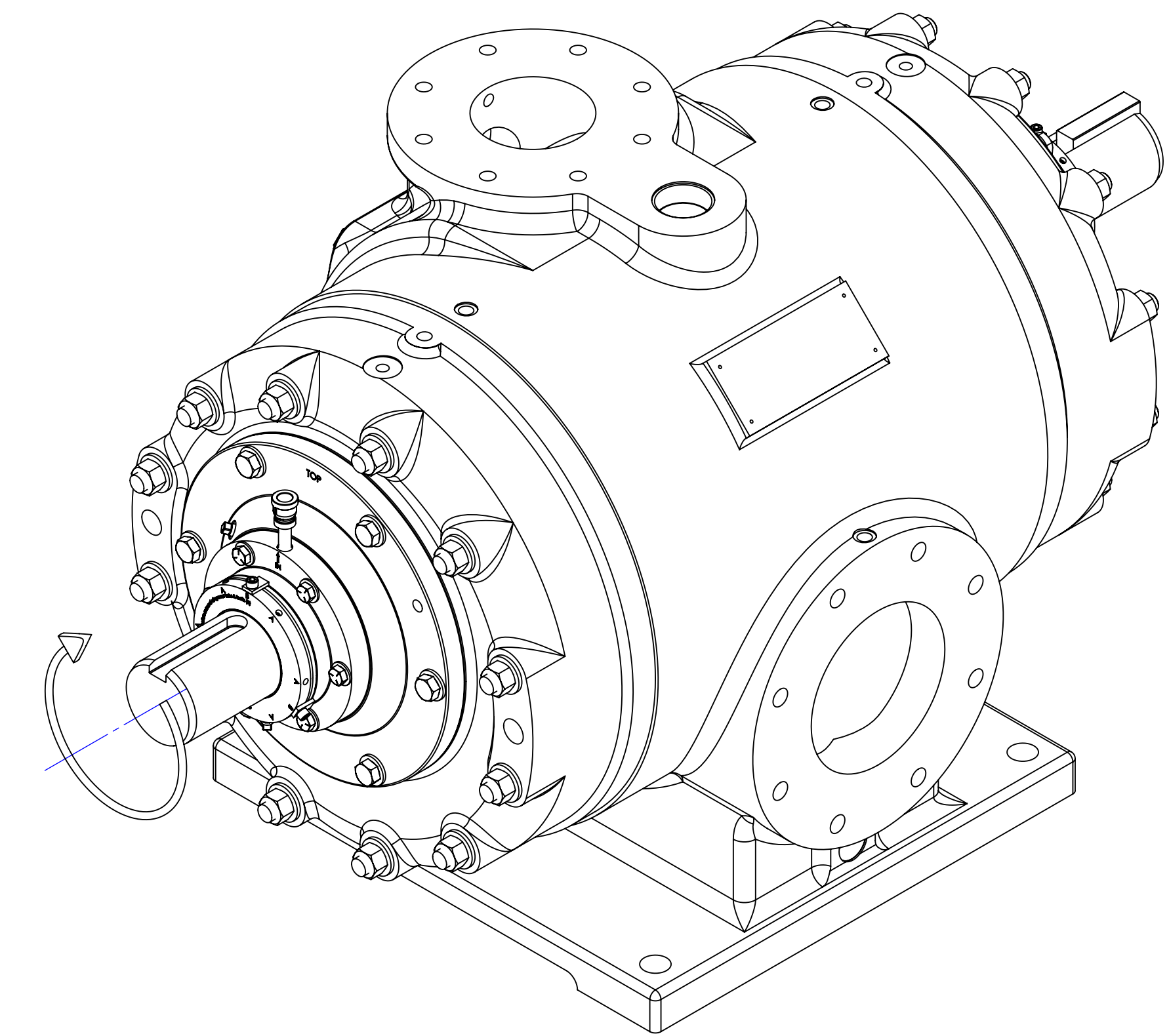
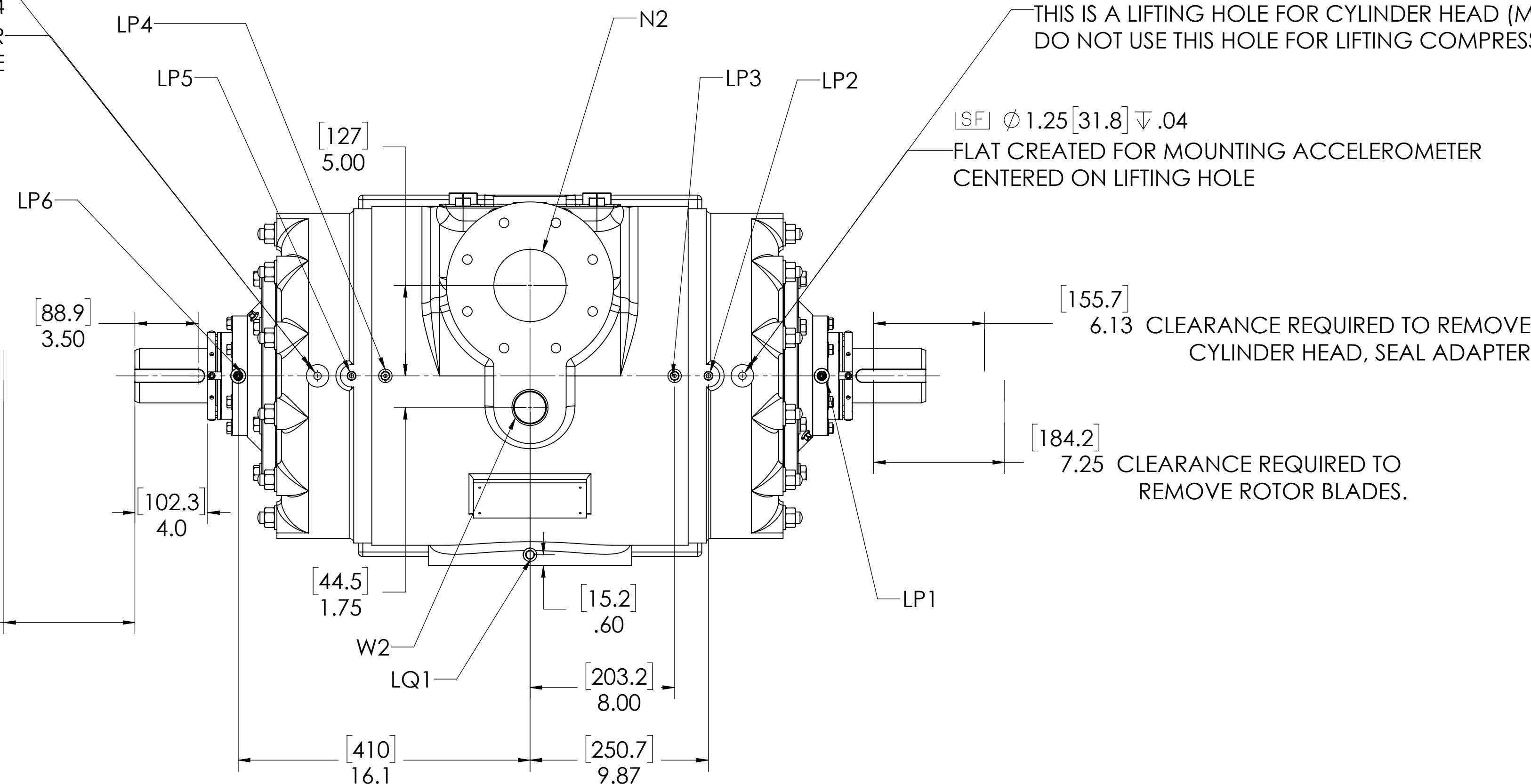
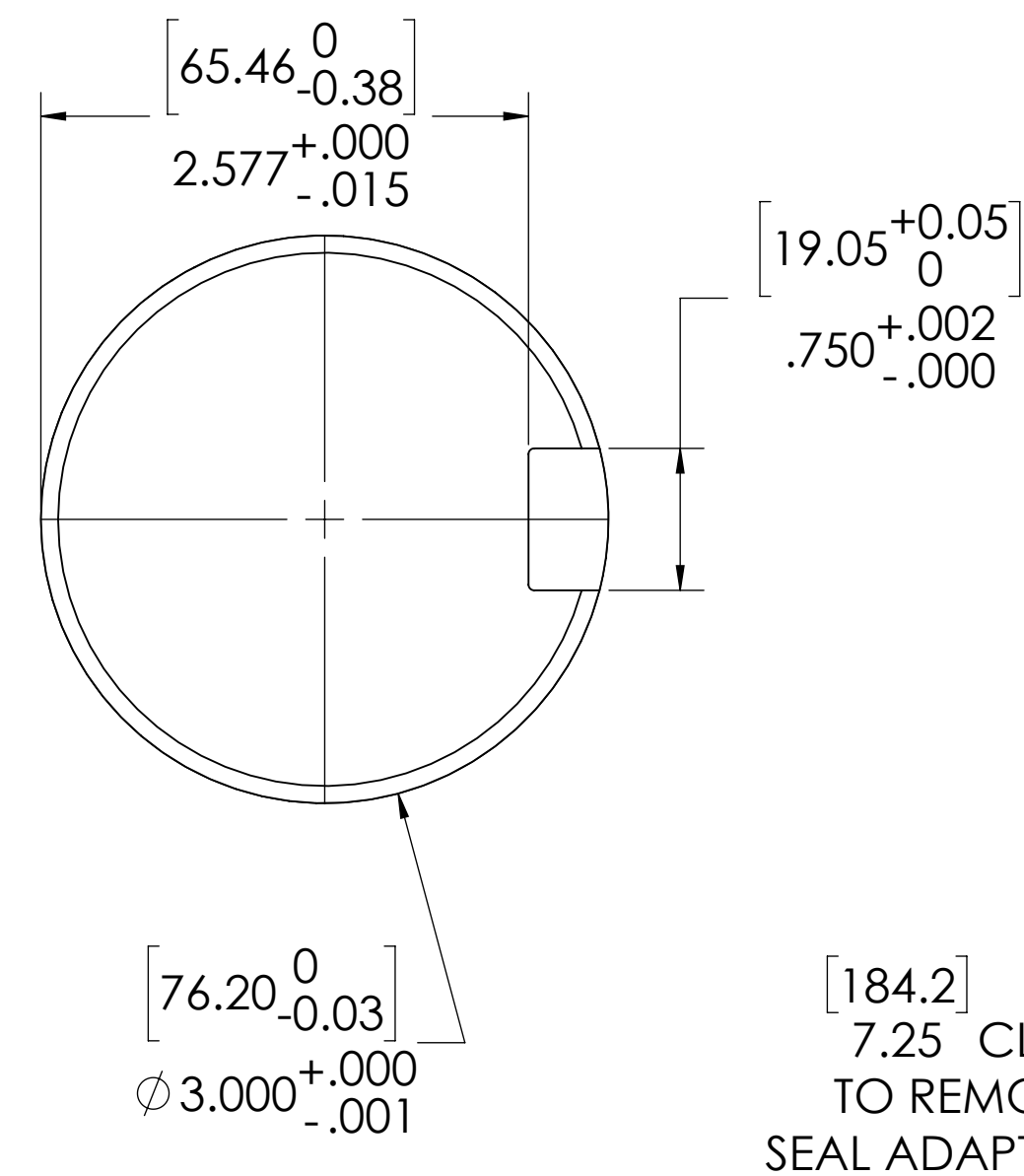


1/2-13 UNC - 2B  $\nabla$  .56 [14.2]  
THIS IS A LIFTING HOLE FOR CYLINDER HEAD (MAINTENANCE) ONLY.  
DO NOT USE THIS HOLE FOR LIFTING COMPRESSOR!

LSF  $\phi$  1.25 [31.8]  $\nabla$  .04  
FLAT CREATED FOR MOUNTING ACCELEROMETER  
CENTERED ON LIFTING HOLE

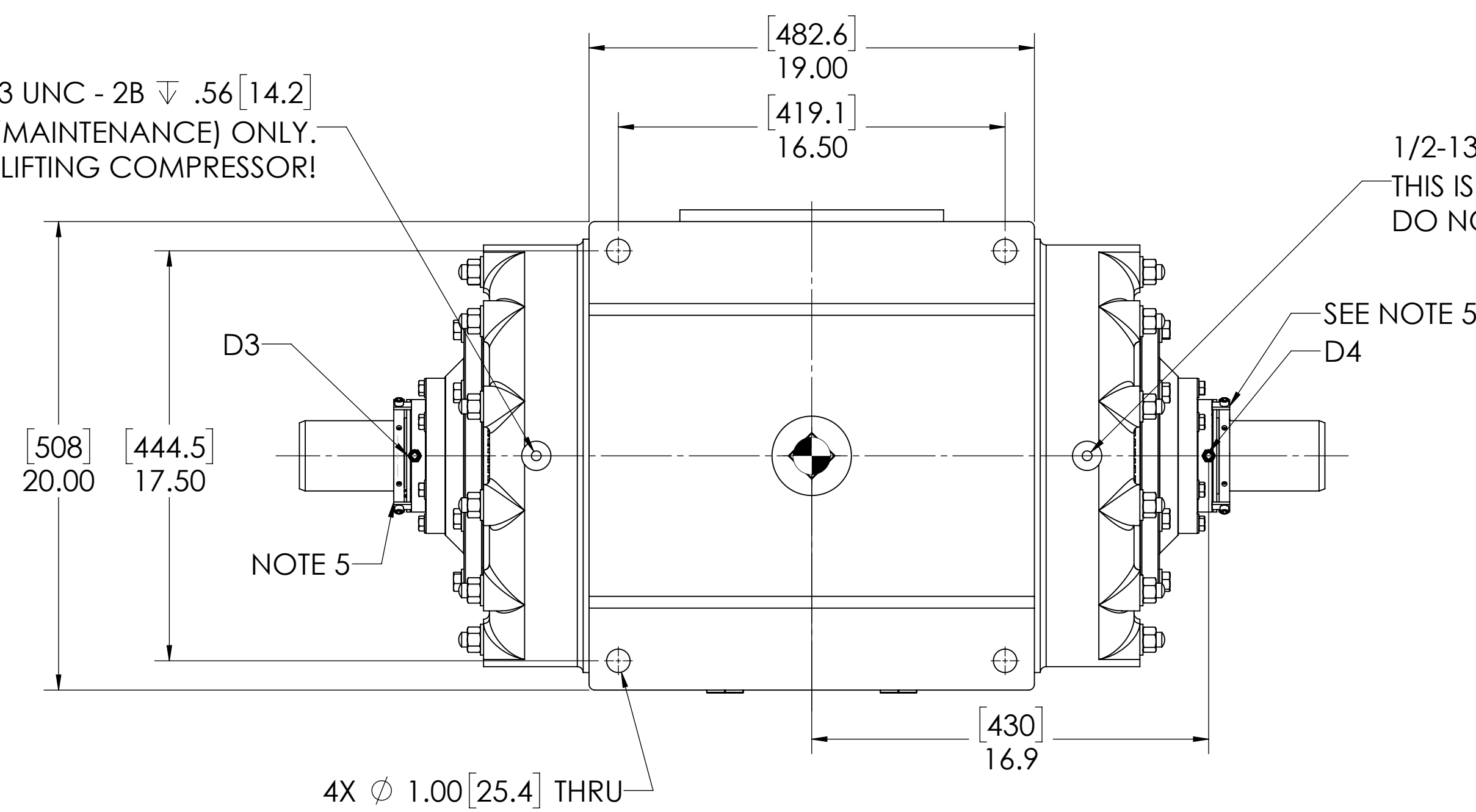
1/2-13 UNC - 2B  $\nabla$  .56 [14.2]  
THIS IS A LIFTING HOLE FOR CYLINDER HEAD (MAINTENANCE) ONLY.  
DO NOT USE THIS HOLE FOR LIFTING COMPRESSOR!

LSF  $\phi$  1.25 [31.8]  $\nabla$  .04  
FLAT CREATED FOR MOUNTING ACCELEROMETER  
CENTERED ON LIFTING HOLE



1/2-13 UNC - 2B  $\nabla$  .56 [14.2]  
THIS IS A LIFTING HOLE FOR CYLINDER HEAD (MAINTENANCE) ONLY.  
DO NOT USE THIS HOLE FOR LIFTING COMPRESSOR!

1/2-13 UNC - 2B  $\nabla$  .56 [14.2]  
THIS IS A LIFTING HOLE FOR CYLINDER HEAD (MAINTENANCE) ONLY.  
DO NOT USE THIS HOLE FOR LIFTING COMPRESSOR!



NOTES:

- CENTER OF MASS DIMENSIONS ARE APPROXIMATE
- EITHER WATER INLET MAY BE USED, DEPENDING UPON SYSTEM NEEDS
- WEIGHT IS APPROXIMATE
- THIS DRAWING IS DUAL DIMENSION. DIMENSIONS WITHOUT BRACKETS ARE IN INCHES, DIMENSIONS IN [BRACKETS] ARE IN MILLIMETERS.
- REMOVE (3) RED SEAL LOCKING TABS BEFORE OPERATION. RETAIN TABS AND SCREWS FOR SERVICE (TABS MUST BE INSTALLED BEFORE SEAL REMOVAL).

NOZZLE CONNECTIONS		BOLT HOLE SIZE
N1	6" GAS SUCTION FLANGE (ANSI CLASS 150 FLAT FACE)	8 x 3/4-10 $\nabla$ 1.20
N2	4" GAS DISCHARGE FLANGE (ANSI CLASS 150 FLAT FACE)	8 x 5/8-11 $\nabla$ 1.00
W1A	1NPT(F) WATER INLET (SEE NOTE 2)	N/A
W1B	2 NPT(F) WATER INLET (SEE NOTE 2)	N/A
W2	1-1/2 NPT(F) WATER OUTLET	N/A
D1	1-1/2 NPT(F) DRAIN HOLE	N/A
D2	1-1/2 NPT(F) DRAIN HOLE	N/A
D3	1/8 NPT (F) SEAL WEEPAGE DRAIN	N/A
D4	1/8 NPT (F) SEAL WEEPAGE DRAIN	N/A

OIL CONNECTION POINTS SUMMARY		
(REFER TO MANUAL FOR FURTHER INFORMATION)		
DESCRIPTION	THREAD SIZE	QTY
LUBE QUILL (LQx)	1/4 NPT (F)	1
LUBE POINTS (LPx)	1/4 NPT (F)	6

UNLESS OTHERWISE SPECIFIED:  
DIMENSIONS ARE IN INCHES  
TOLERANCES:  
ANGULAR: MACH 2 DEG  
SURFACE FINISH: 125  
TAP PLACE DECIMAL: 1 EIGHT  
HOLE PLACE DECIMAL: 1 EIGHT  
THIRD PLACE DECIMAL: 1 EIGHT

PROPRIETARY AND CONFIDENTIAL

THE INFORMATION CONTAINED IN THIS DRAWING IS THE SOLE PROPERTY OF RO-FLO COMPRESSORS, LLC. ANY REPRODUCTION IN PART OR AS A WHOLE WITHOUT THE WRITTEN PERMISSION OF RO-FLO COMPRESSORS, LLC IS PROHIBITED.

NAME: TRF  
DATE: 8/8/2023  
CHECKED: CSH  
DATE: 8/8/2023  
ENG APPR: BJS  
DATE: 8/8/2023

Ro-Flo COMPRESSORS

GENERAL ARRANGEMENT,  
212W, SC, DOUBLE EXTENSION

SCALE: 1:5  
SHEET: 1 OF 1