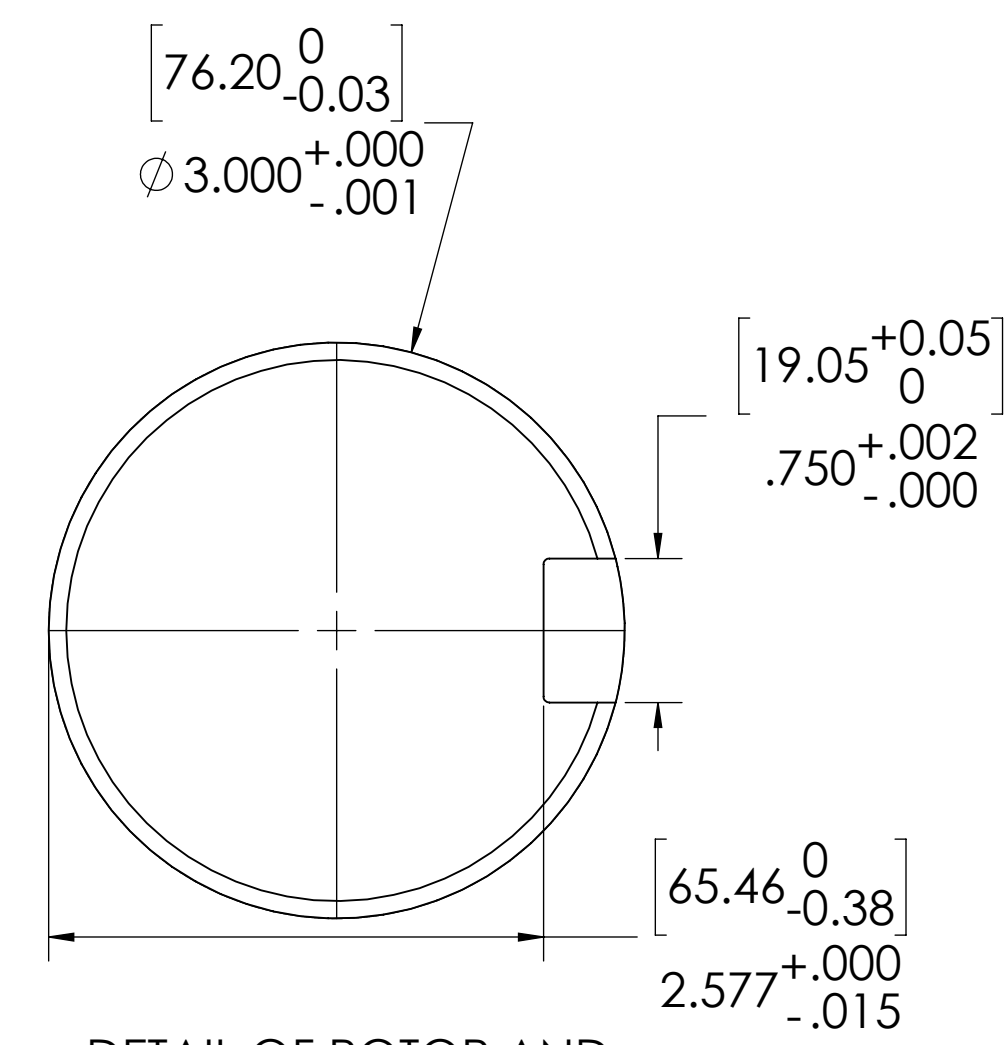


1/2-13 UNC - 2B ∇ .56 [14.22] THIS IS A LIFTING HOLE FOR CYLINDER HEAD (MAINTENANCE) ONLY. DO NOT USE THIS HOLE FOR LIFTING COMPRESSOR!

[31.75]
 ϕ 1.25 FLAT MACHINED FOR MOUNTING
 ACCELEROMETER CENTERED ON LIFTING HOLE.

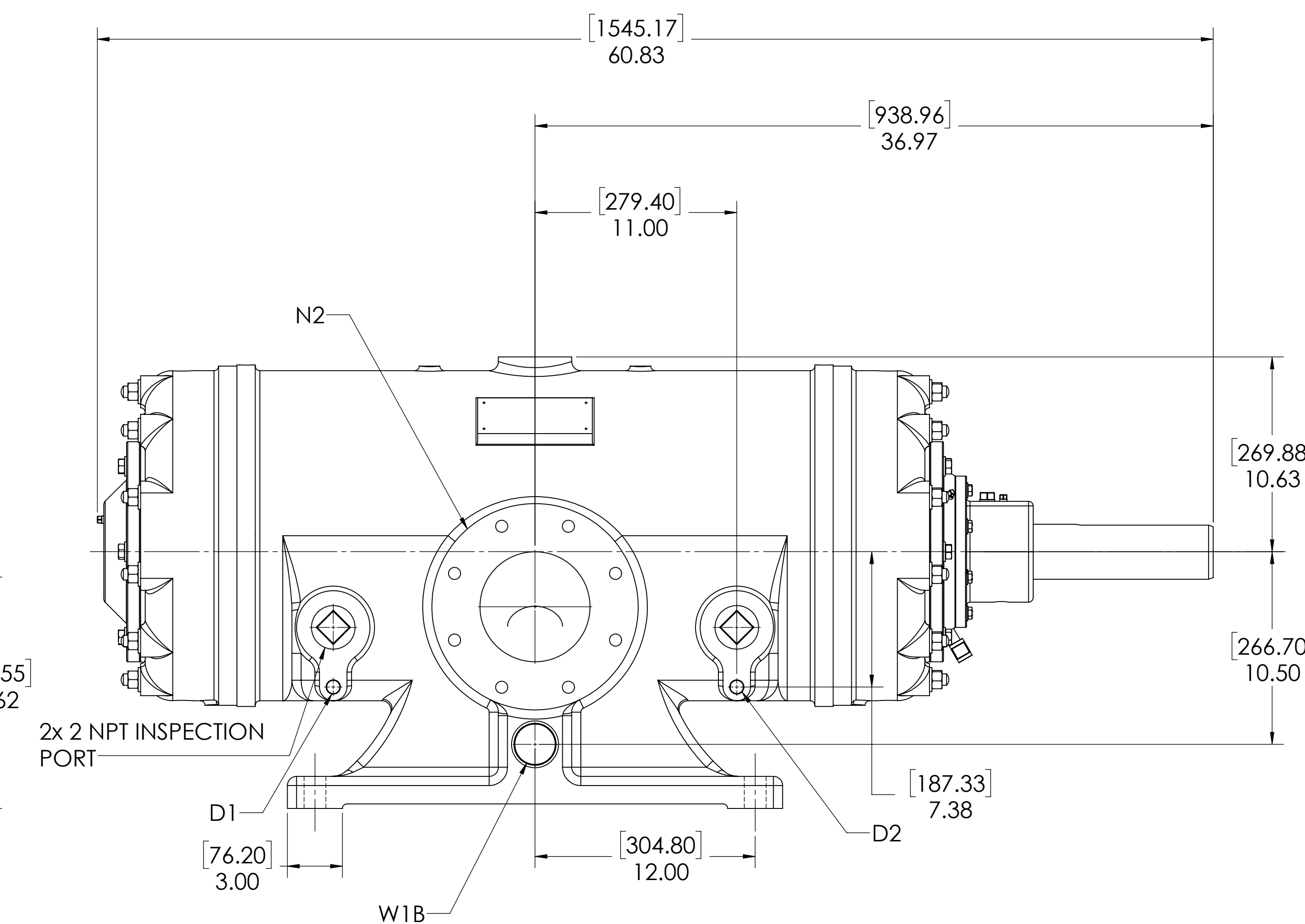
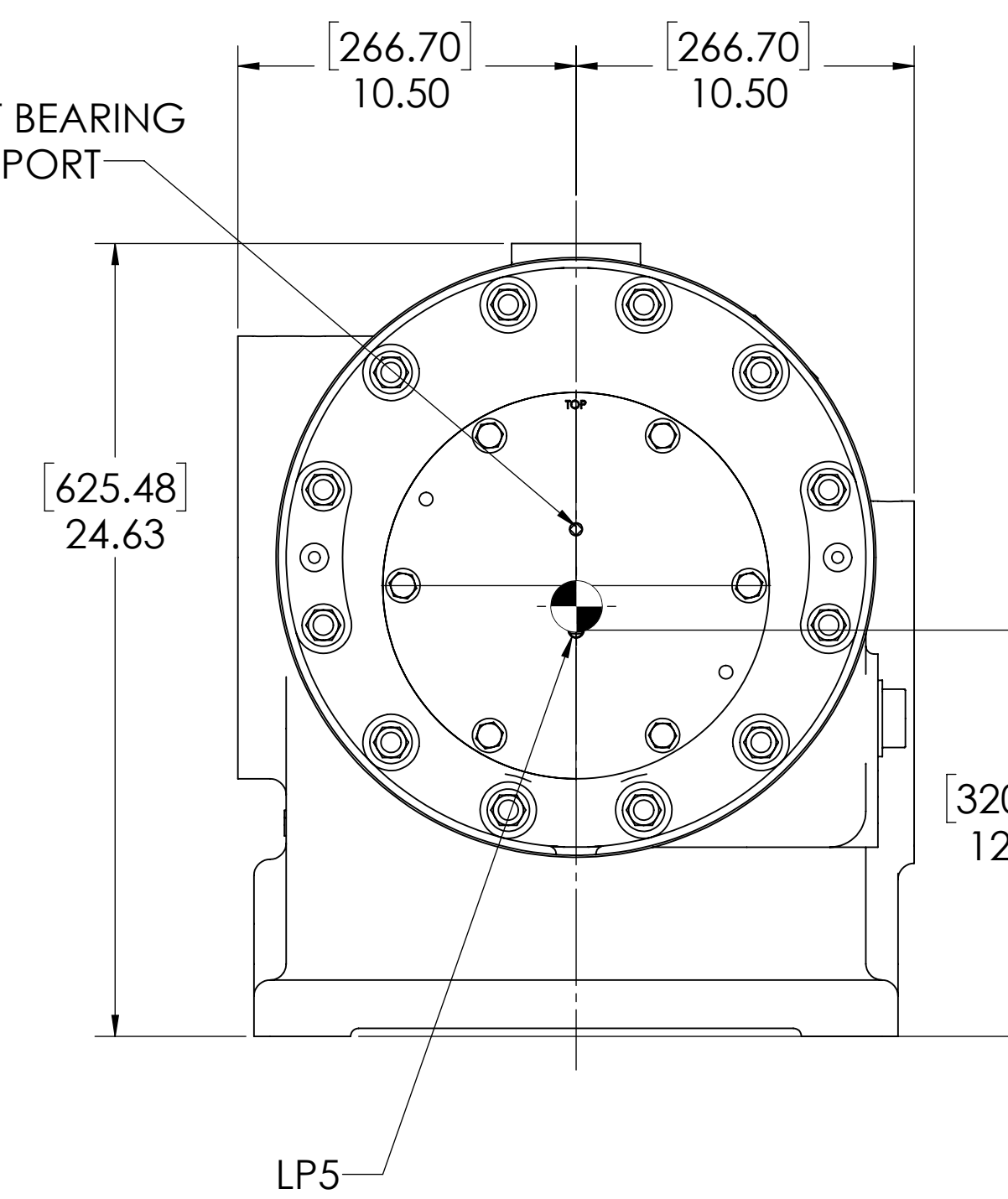
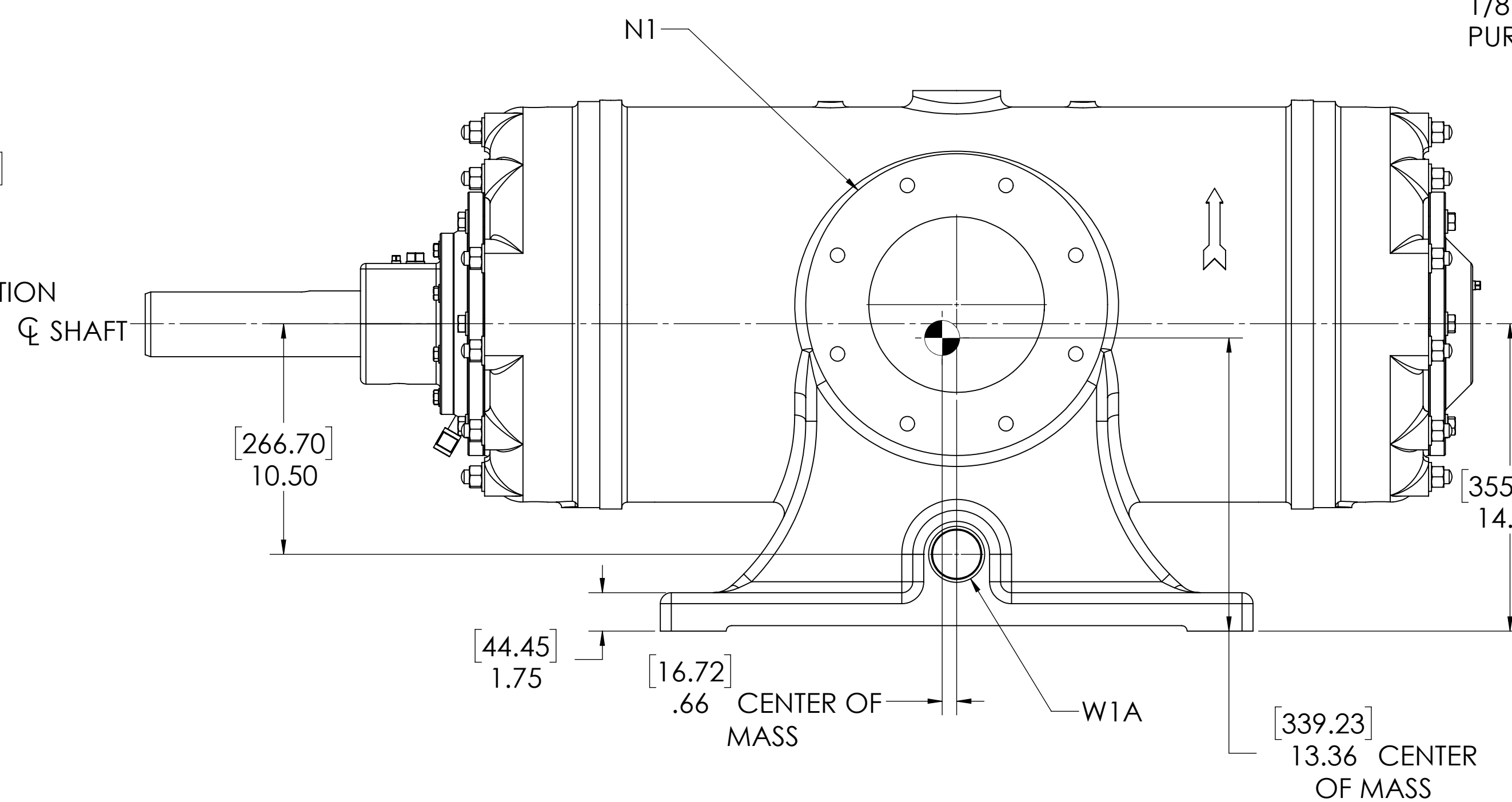
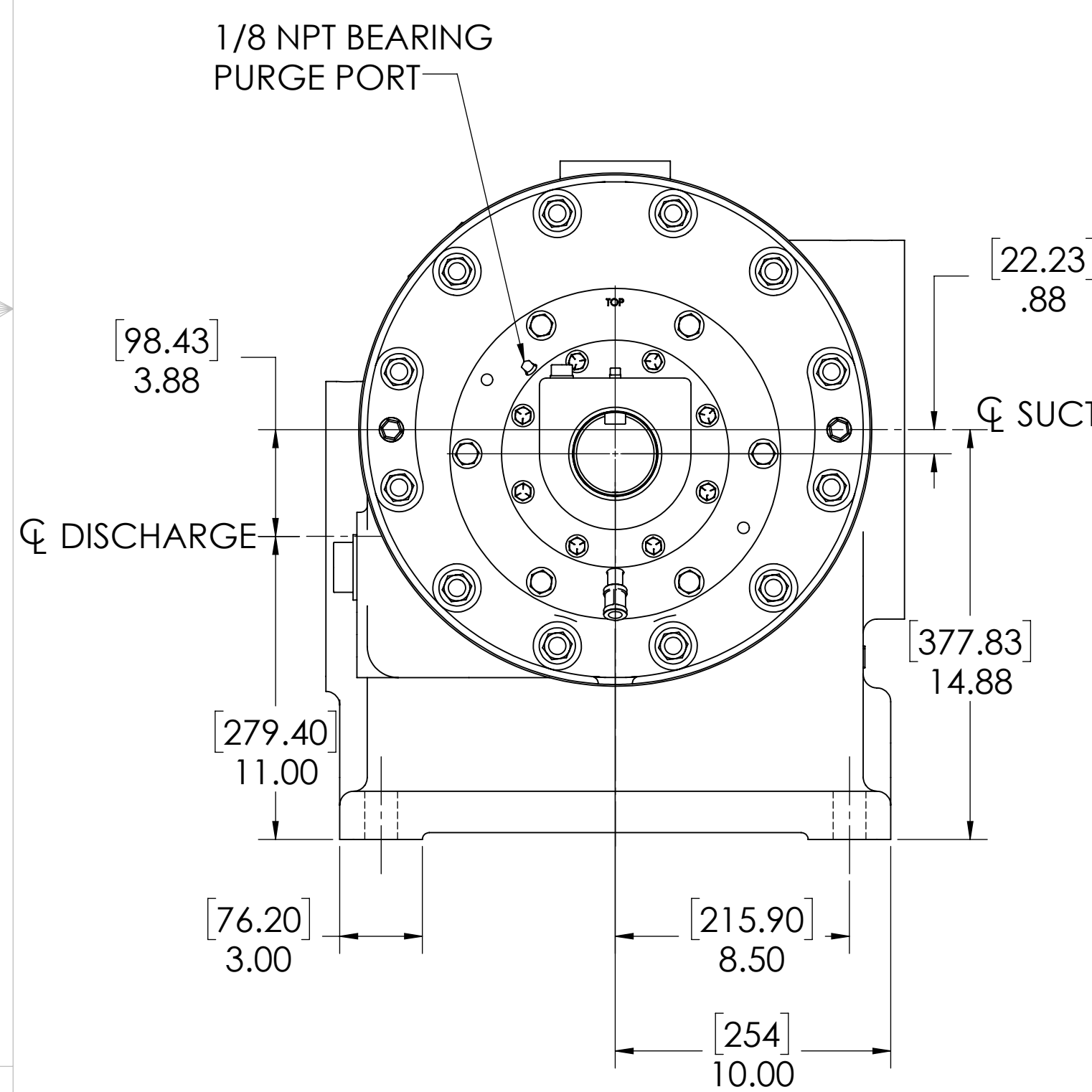
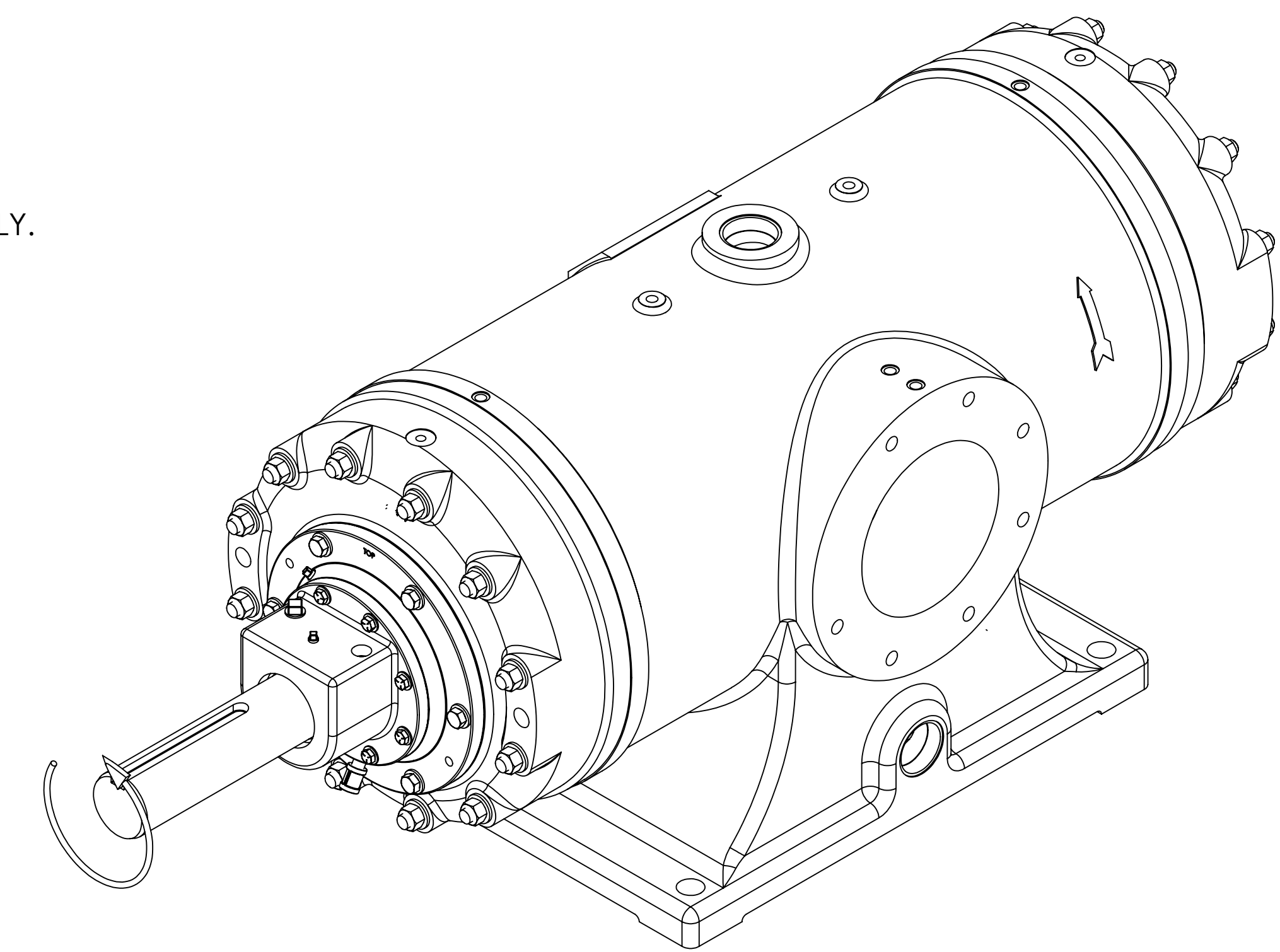
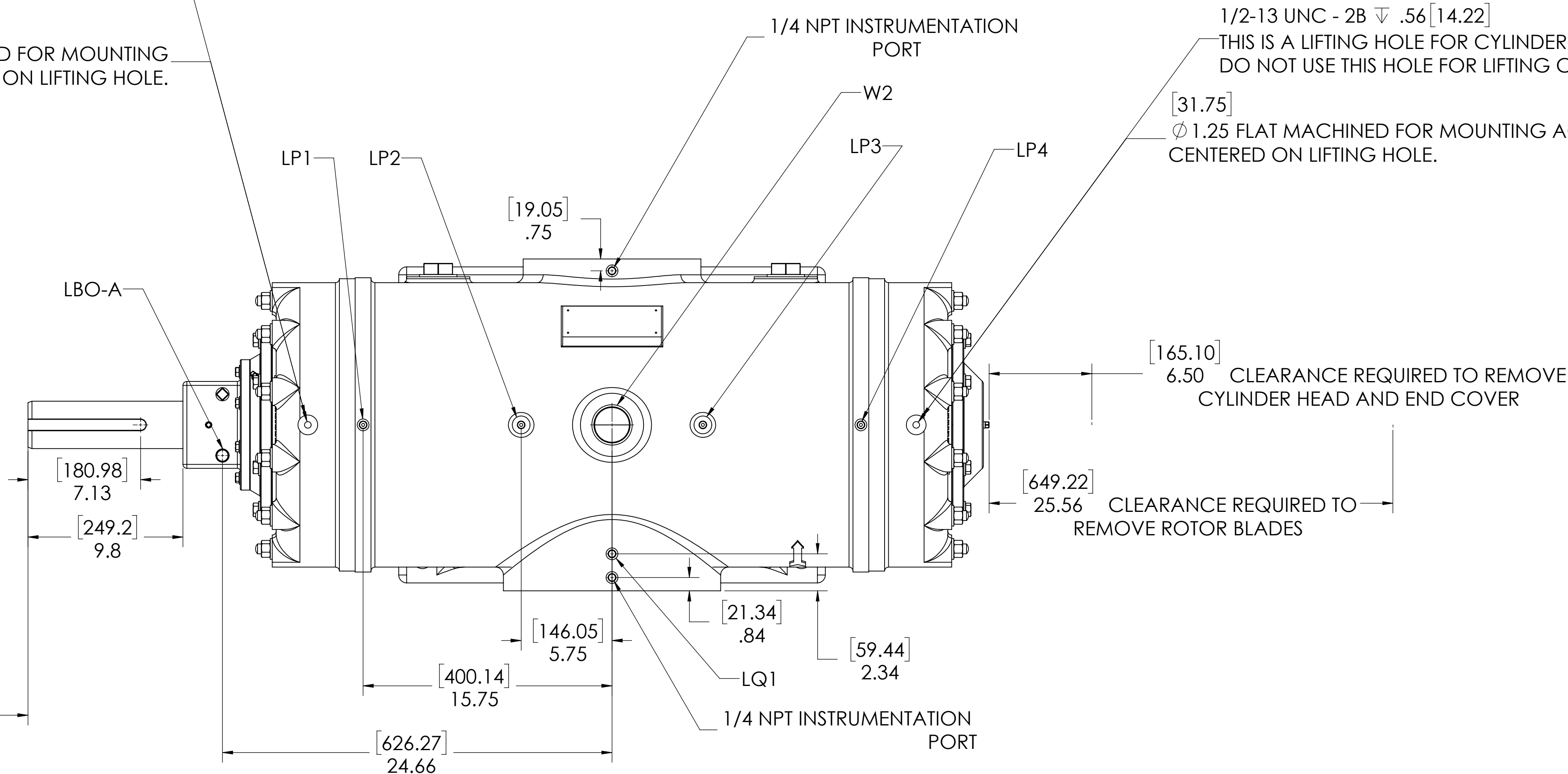
1/2-13 UNC - 2B ∇ .56 [14.22]
 THIS IS A LIFTING HOLE FOR CYLINDER HEAD (MAINTENANCE) ONLY.
 DO NOT USE THIS HOLE FOR LIFTING COMPRESSOR!

[31.75]
 ϕ 1.25 FLAT MACHINED FOR MOUNTING ACCELEROMETER
 CENTERED ON LIFTING HOLE.



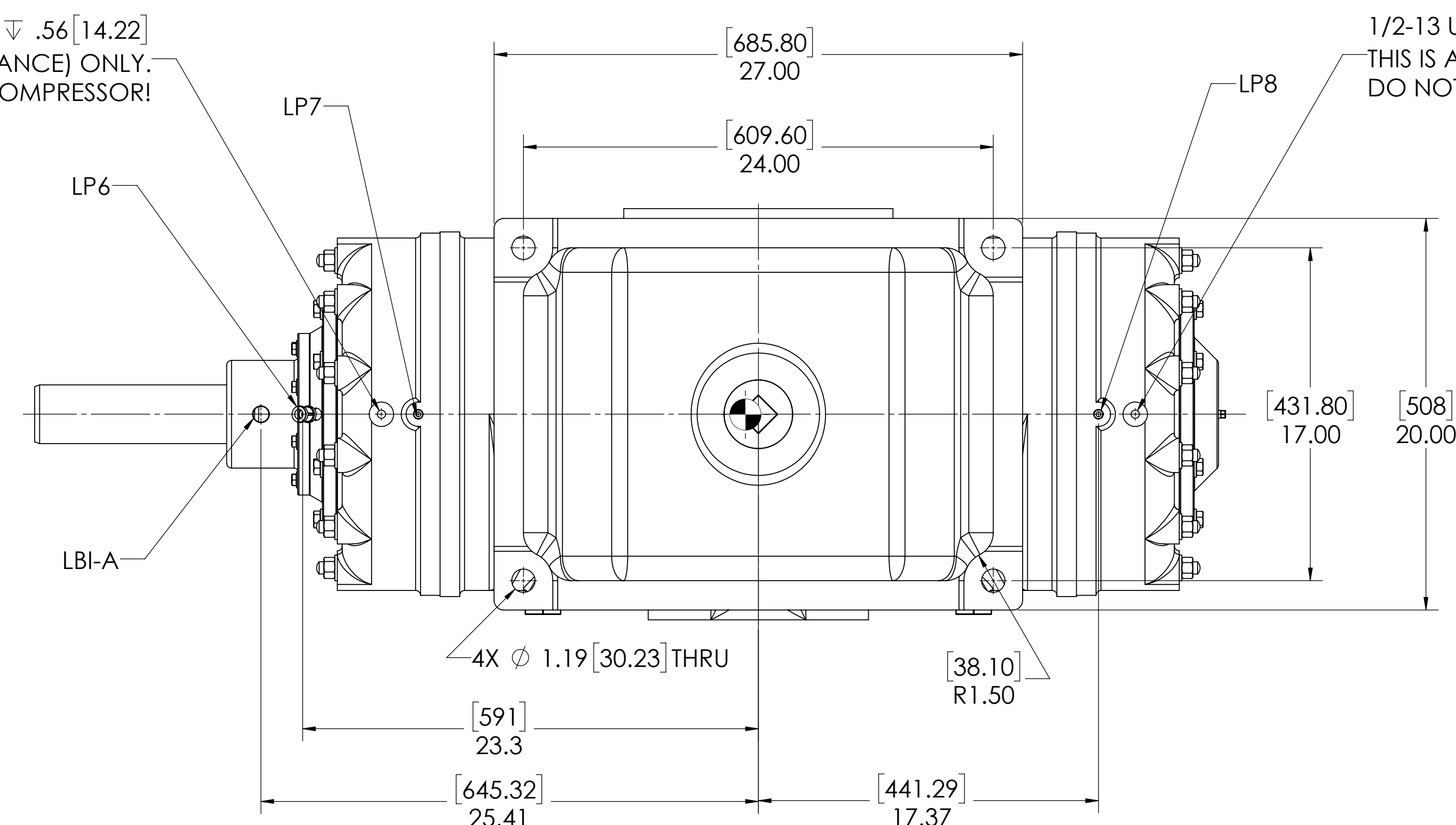
DETAIL OF ROTOR AND KEYWAY

[184.91]
 7.28 CLEARANCE REQUIRED TO REMOVE CYLINDER HEAD AND SEAL ADAPTER



1/2-13 UNC - 2B ∇ .56 [14.22]
 THIS IS A LIFTING HOLE FOR CYLINDER HEAD (MAINTENANCE) ONLY.
 DO NOT USE THIS HOLE FOR LIFTING COMPRESSOR!

1/2-13 UNC - 2B ∇ .56 [14.22]
 THIS IS A LIFTING HOLE FOR CYLINDER HEAD (MAINTENANCE) ONLY.
 DO NOT USE THIS HOLE FOR LIFTING COMPRESSOR!



| OIL CONNECTION POINTS SUMMARY | | |
|---|-------------|-----|
| (REFER TO MANUAL FOR FURTHER INFORMATION) | | |
| DESCRIPTION | THREAD SIZE | QTY |
| LUBE QUILL (LQX) | 1/4 NPT (F) | 1 |
| LUBE POINTS (LPX) | 1/4 NPT (F) | 8 |
| SEAL SUPPLY (LBI-A) | 1/2 NPT (F) | 1 |
| SEAL RETURN (LBO-A) | 1/2 NPT (F) | 1 |

| NOZZLE CONNECTIONS | | BOLT HOLE SIZE |
|--------------------|--|--------------------------|
| N1 | 8" GAS SUCTION FLANGE (ANSI CLASS 150 FLAT FACE) | 8 x 3/4-10 ∇ 1.25 |
| N2 | 6" GAS DISCHARGE FLANGE (ANSI CLASS 150 FLAT FACE) | 8 x 3/4-10 ∇ 1.25 |
| W1A | 2 NPT (F) WATER INLET (SEE NOTE 2) | N/A |
| W1B | 2 NPT (F) WATER INLET (SEE NOTE 2) | N/A |
| W2 | 2 NPT (F) WATER OUTLET | N/A |
| D1 | 1/2 NPT DRAIN HOLE | N/A |
| D2 | 1/2 NPT DRAIN HOLE | N/A |

NOTES:

- CENTER OF MASS DIMENSIONS ARE APPROXIMATE
- EITHER WATER INLET MAY BE USED, DEPENDING UPON SYSTEM NEEDS
- WEIGHT IS APPROXIMATE
- THIS DRAWING IS DUAL DIMENSION. DIMENSIONS WITHOUT BRACKETS ARE IN INCHES, DIMENSIONS IN [BRACKETS] ARE IN MILLIMETERS.

UNLESS OTHERWISE SPECIFIED:
 DIMENSIONS ARE IN INCHES
 TOLERANCES:
 ANGULAR: MACH 5 DEG
 SURFACE FINISH: 32 RMS
 TYPICAL PLACE DECIMAL: 1.00
 HOLE PLACE DECIMAL: 0.010

PROPRIETARY AND CONFIDENTIAL

THE INFORMATION CONTAINED IN THIS DRAWING IS THE SOLE PROPERTY OF RO-FLO COMPRESSORS, LLC. IT IS TO BE USED ONLY FOR THE MANUFACTURE OF RO-FLO COMPRESSORS, LLC. IS PROHIBITED.

Ro-Flo
 Compressors, LLC
 GENERAL ARRANGEMENT,
 125.DBS.CCW

DATE: 12/30/2019
 DRAWN BY: TRF
 CHECKED BY: TRF
 ENG APPR BY: TRF

SIZE: PART NO. 16-123-633-428 08
 SCALE: 1:5
 WEIGHT: 2250 LBS.
 SHEET: 1 OF 1