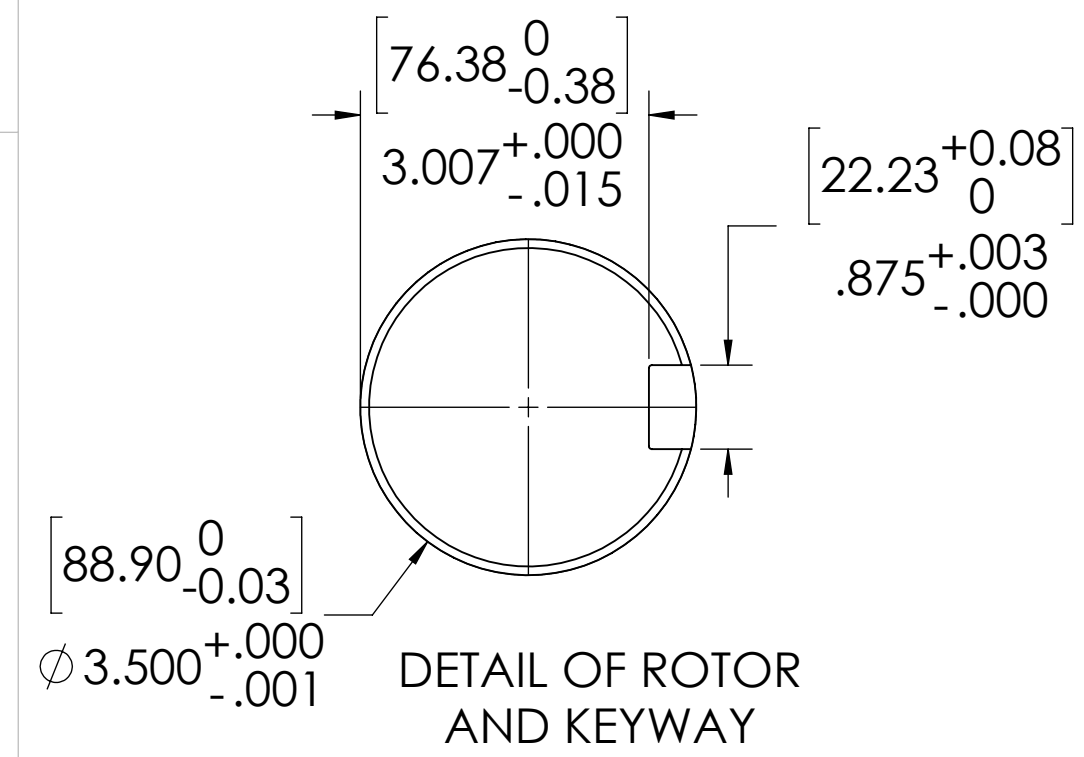


3/4-10 UNC - 2B  $\nabla$  .75 [19.05]  
THIS IS A LIFTING HOLE FOR CYLINDER HEAD (MAINTENANCE) ONLY.  
DO NOT USE THIS HOLE FOR LIFTING COMPRESSOR!

$\nabla$   $\phi$  1.25 [31.75]  $\nabla$  .03  
FLAT CREATED FOR MOUNTING ACCELEROMETER  
CENTERED ON LIFTING HOLE



DETAIL OF ROTOR AND KEYWAY

[206.50]  
8.13 CLEARANCE REQUIRED TO REMOVE CYLINDER HEAD AND SEAL ADAPTER

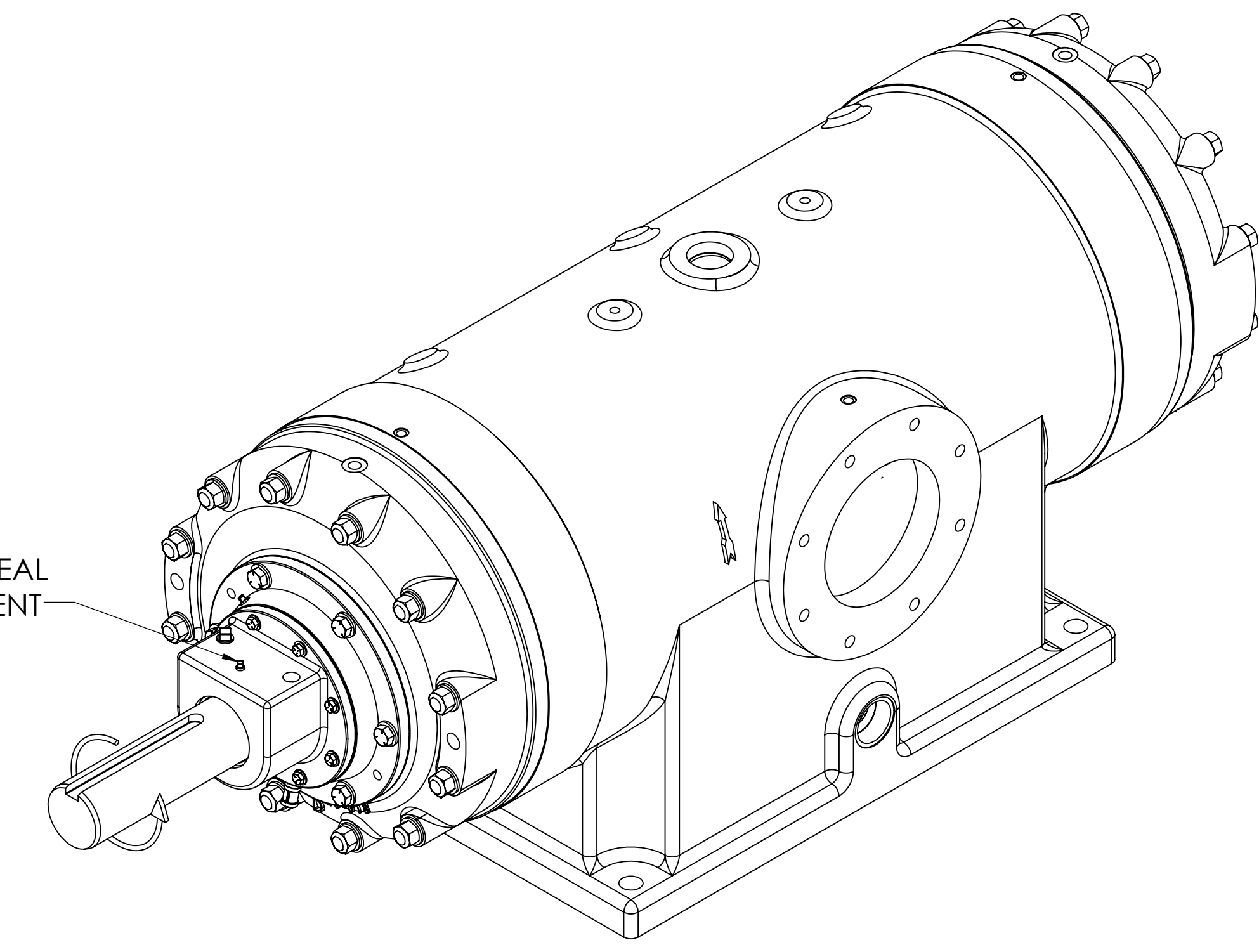
3/4-10 UNC - 2B  $\nabla$  .75 [19.05]  
THIS IS A LIFTING HOLE FOR CYLINDER HEAD (MAINTENANCE) ONLY.  
DO NOT USE THIS HOLE FOR LIFTING COMPRESSOR!

[31.75]  
 $\phi$  1.25  $\nabla$  .03 [76]  
FLAT CREATED FOR MOUNTING ACCELEROMETER  
CENTERED ON LIFTING HOLE

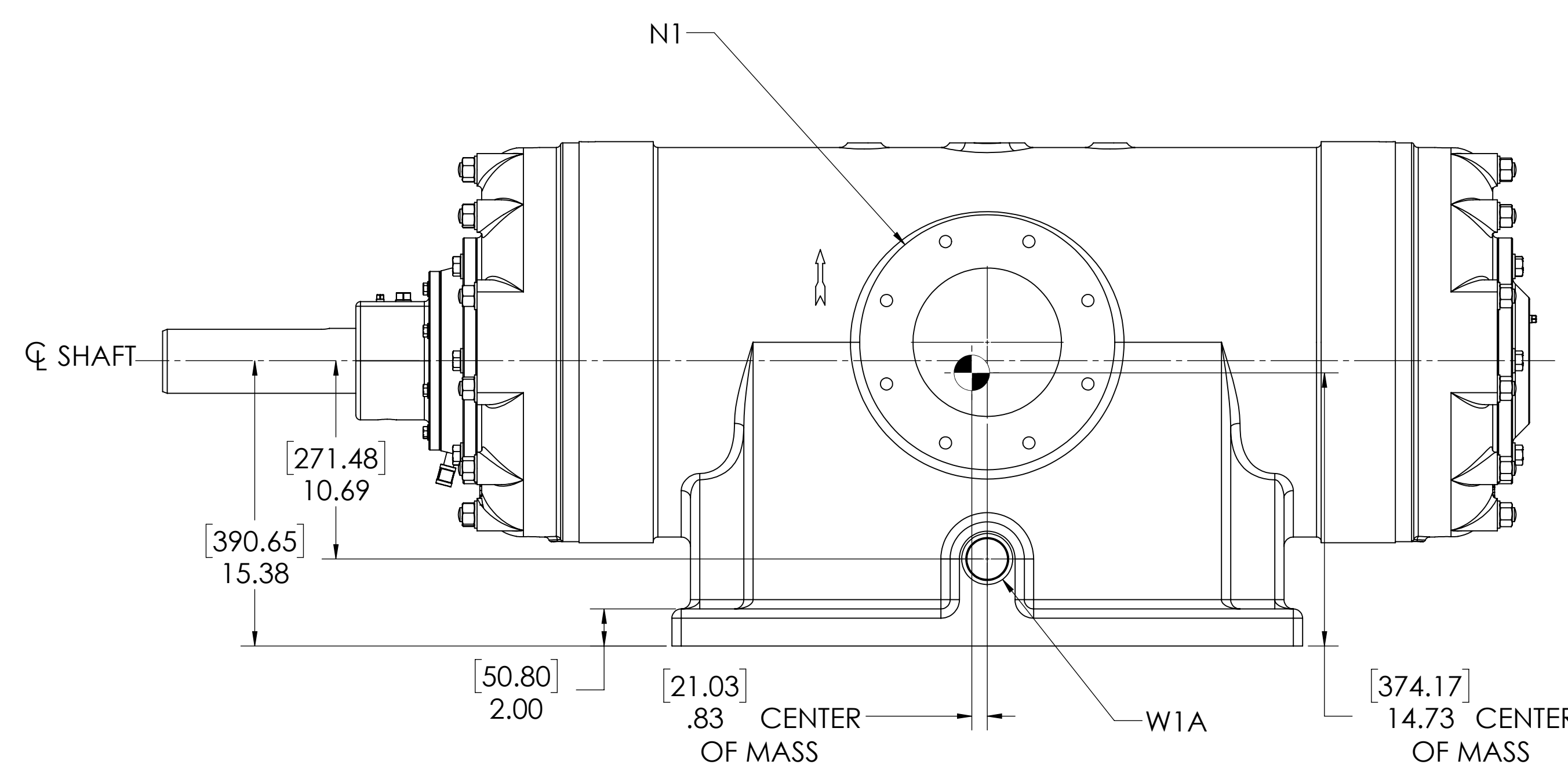
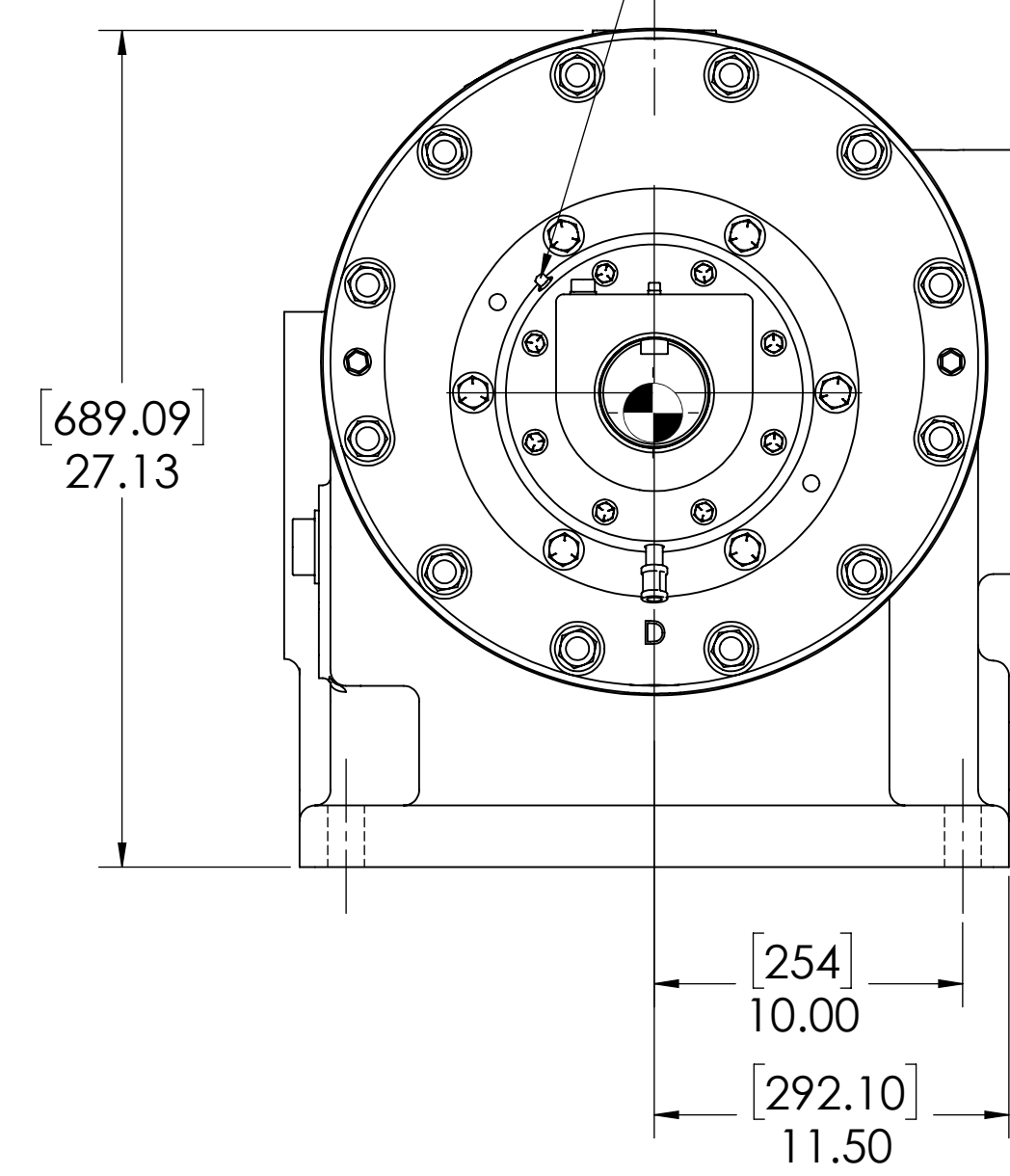
[174.50]  
6.87 CLEARANCE REQUIRED TO REMOVE CYLINDER HEAD AND END COVER

[952.50]  
37.50 CLEARANCE REQUIRED TO REMOVE ROTOR BLADES

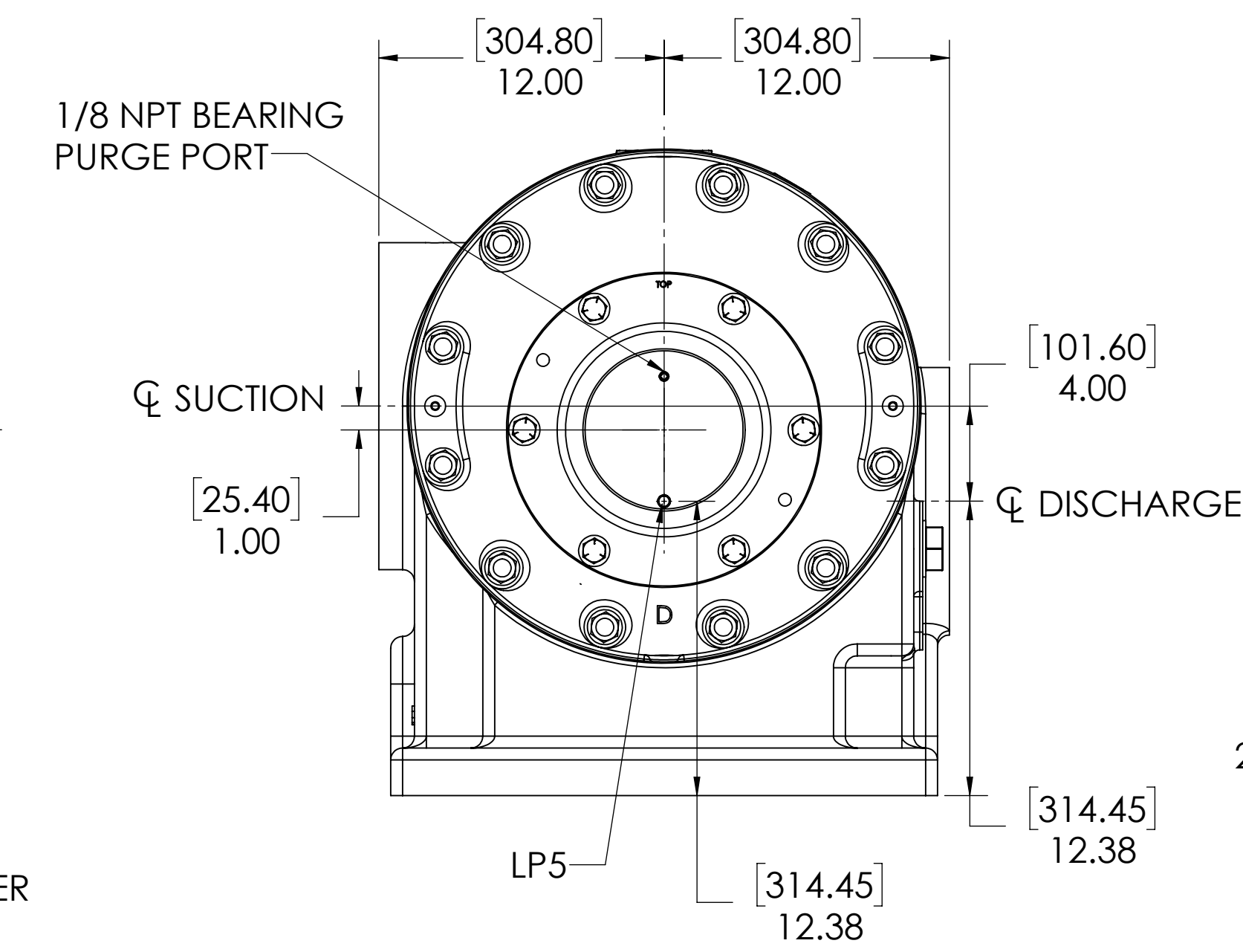
1/8 NPT SEAL CAGE VENT



1/8 NPT BEARING PURGE PORT

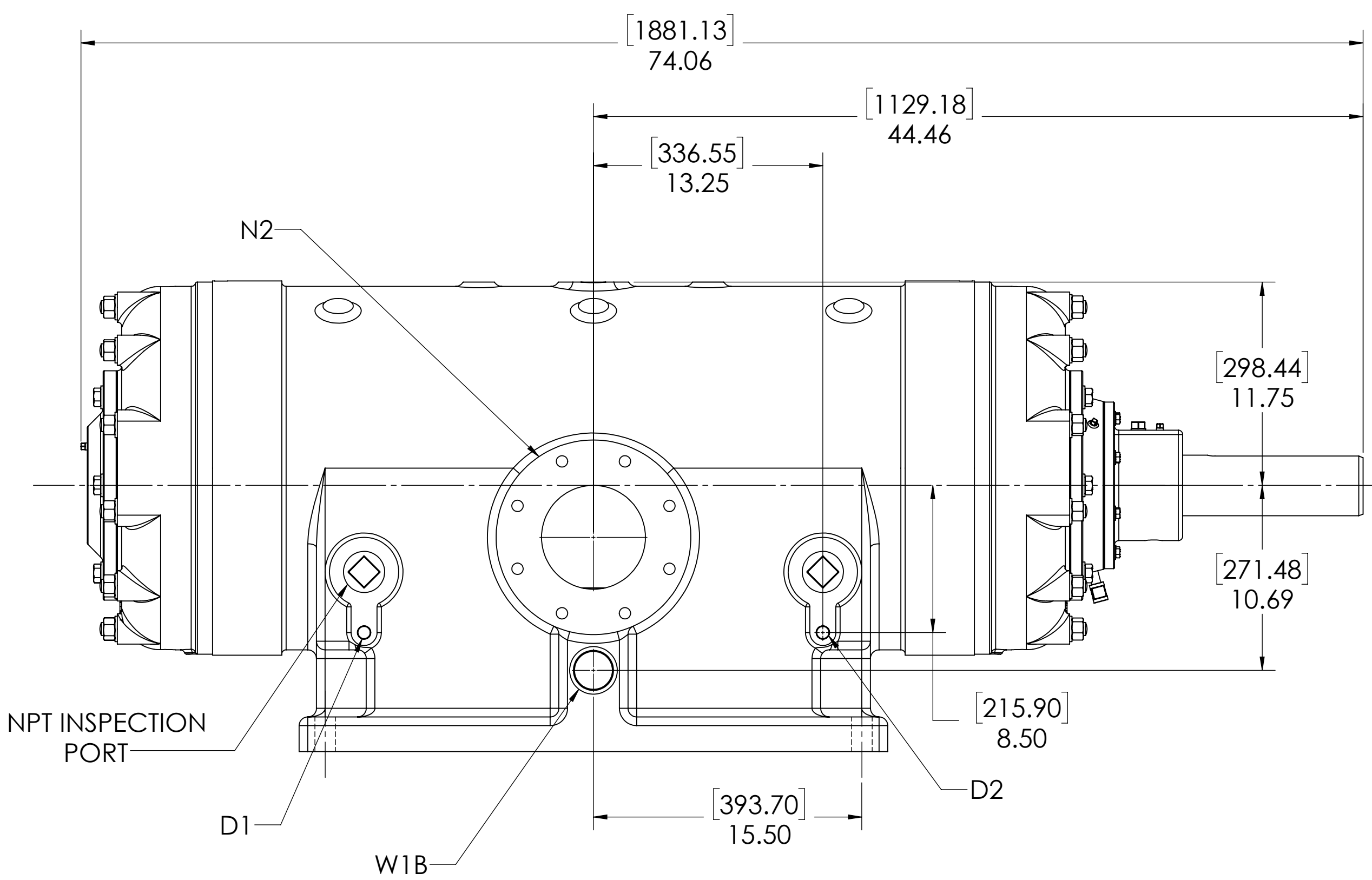


1/8 NPT BEARING PURGE PORT

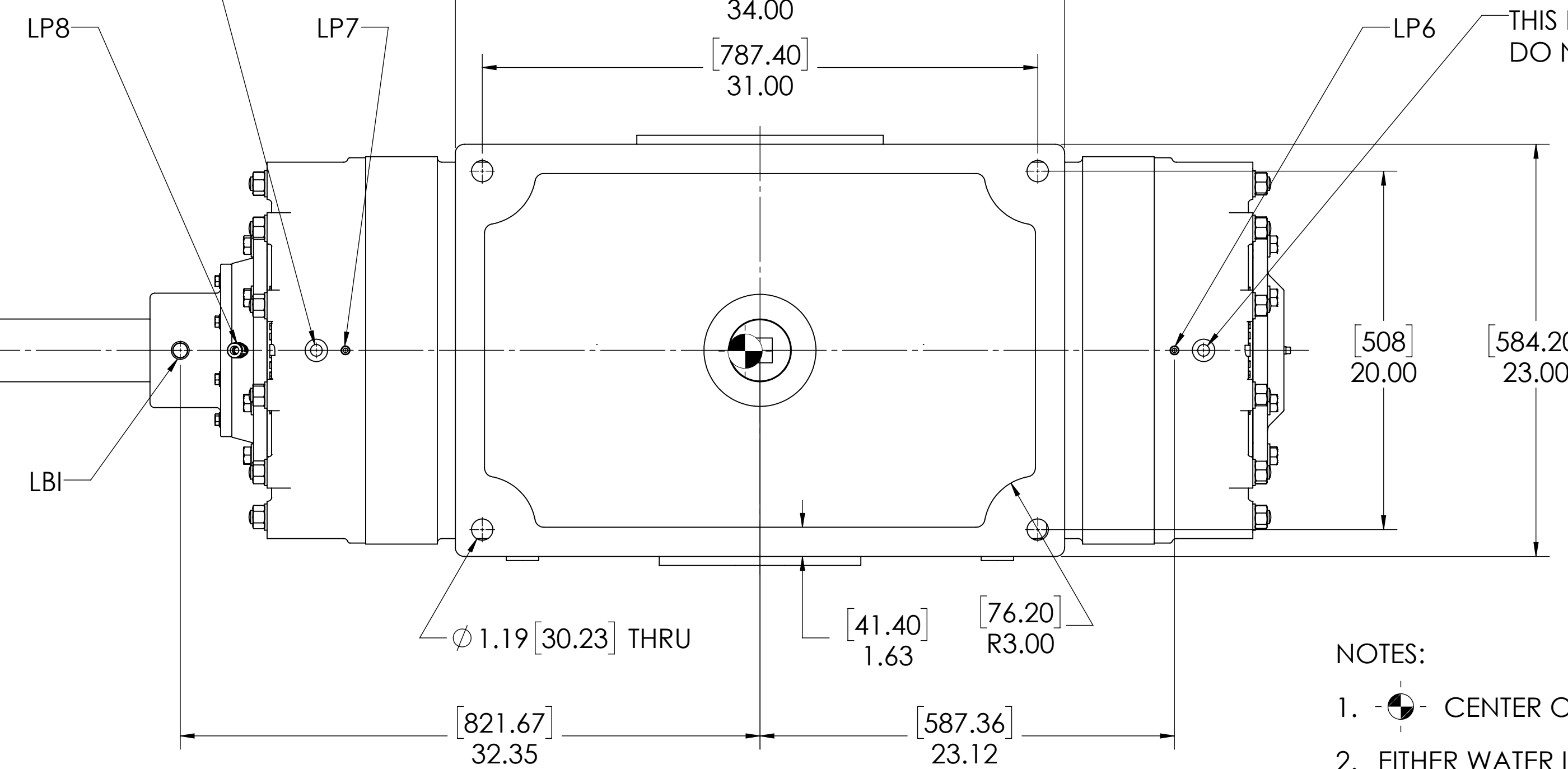


$\phi$  DISCHARGE

2 NPT INSPECTION PORT



3/4-10 UNC - 2B  $\nabla$  .75 [19.05]  
THIS IS A LIFTING HOLE FOR CYLINDER HEAD (MAINTENANCE) ONLY.  
DO NOT USE THIS HOLE FOR LIFTING COMPRESSOR!



3/4-10 UNC - 2B  $\nabla$  .75 [19.05]  
THIS IS A LIFTING HOLE FOR CYLINDER HEAD (MAINTENANCE) ONLY.  
DO NOT USE THIS HOLE FOR LIFTING COMPRESSOR!

NOZZLE CONNECTIONS		BOLT HOLE SIZE
N1	8" GAS SUCTION FLANGE (ANSI CLASS 150 FLAT FACE)	8 x 3/4-10 $\nabla$ 1.12
N2	6" GAS DISCHARGE FLANGE (ANSI CLASS 150 FLAT FACE)	8 x 3/4-10 $\nabla$ 1.12
W1A	2 NPT(F) WATER INLET (SEE NOTE 2)	N/A
W1B	2 NPT(F) WATER INLET (SEE NOTE 2)	N/A
W2	2 NPT(F) WATER OUTLET	N/A
D1	1/2 NPT DRAIN HOLE	N/A
D2	1/2 NPT DRAIN HOLE	N/A

OIL CONNECTION POINTS SUMMARY (REFER TO MANUAL FOR FURTHER INFORMATION)		
DESCRIPTION	THREAD SIZE	QTY
LUBE QUILL (LQx)	1/4 NPT (F)	1
LUBE POINTS (LPx)	1/4 NPT (F)	8
SEAL SUPPLY (LBI)	1/2 NPT (F)	1
SEAL RETURN (LBO)	1/2 NPT (F)	1

NOTES:

- CENTER OF MASS DIMENSIONS ARE APPROXIMATE
- EITHER WATER INLET MAY BE USED, DEPENDING UPON SYSTEM NEEDS
- WEIGHT IS APPROXIMATE
- DRAWING IS DUAL DIMENSION. DIMENSIONS WITHOUT BRACKETS ARE IN INCHES DIMENSIONS IN [BRACKETS] ARE IN MILLIMETERS.
- USE SEAL OIL RETURN PORT (LBO) AS SHOWN IN TOP VIEW.

UNLESS OTHERWISE SPECIFIED: DIMENSIONS ARE IN INCHES TOLERANCES: ANGULAR: MACH 2 DEG; DIMENSIONS: FRACTIONAL: 1/16; DECIMAL: 0.001; HOLE: 0.0015; TAP: 0.0015; SURFACE: 0.0015; FINISH: 0.0015; UNLESS OTHERWISE SPECIFIED: THE INFORMATION CONTAINED IN THIS DRAWING IS THE SOLE PROPERTY OF RO-FLO COMPRESSORS, LLC. ANY REPRODUCTION IN PART OR AS A WHOLE WITHOUT THE WRITTEN PERMISSION OF RO-FLO COMPRESSORS, LLC IS PROHIBITED.

NAME: DATE: 12/20/2019  
DRAWN: TRF  
CHECKED: TRF  
ENG APPR: TRF  
PROPRIETARY AND CONFIDENTIAL

GENERAL ARRANGEMENT, 17LDBS.CCW  
E 16-123-633-431 10  
SCALE: 1:6 4000 LBS. 1 OF 1