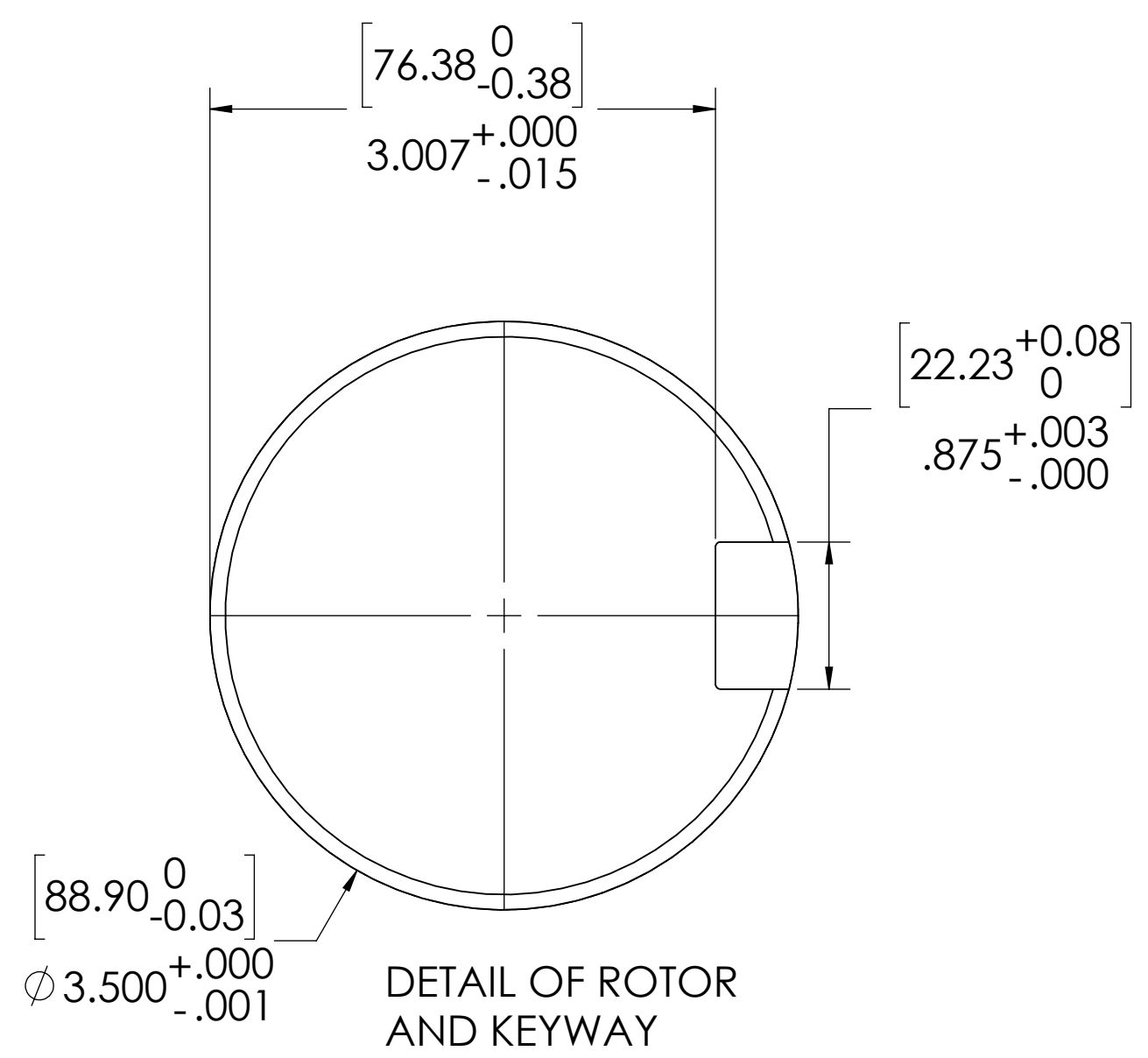


3/4-10 UNC - 2B ∇ .75 [19.05]
THIS IS A LIFTING HOLE FOR CYLINDER HEAD (MAINTENANCE) ONLY.
DO NOT USE THIS HOLE FOR LIFTING CYLINDER!

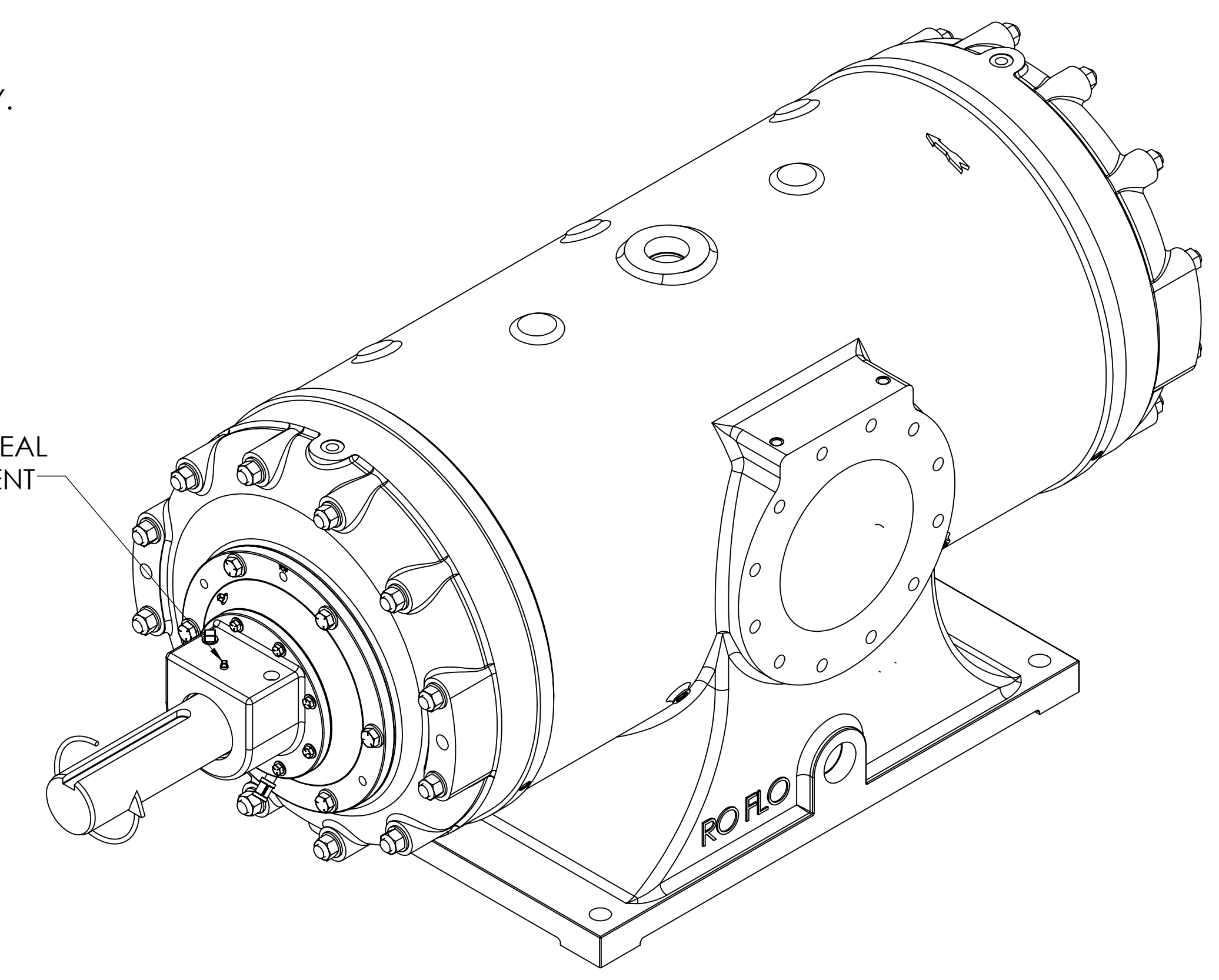
\square ϕ 1.25 [31.75] ∇ .05 FLAT CREATED
FOR MOUNTING ACCELEROMETER
CENTERED ON LIFTING HOLE.



[219.20]
8.63 CLEARANCE REQUIRED
TO REMOVE CYLINDER HEAD
AND SEAL ADAPTER

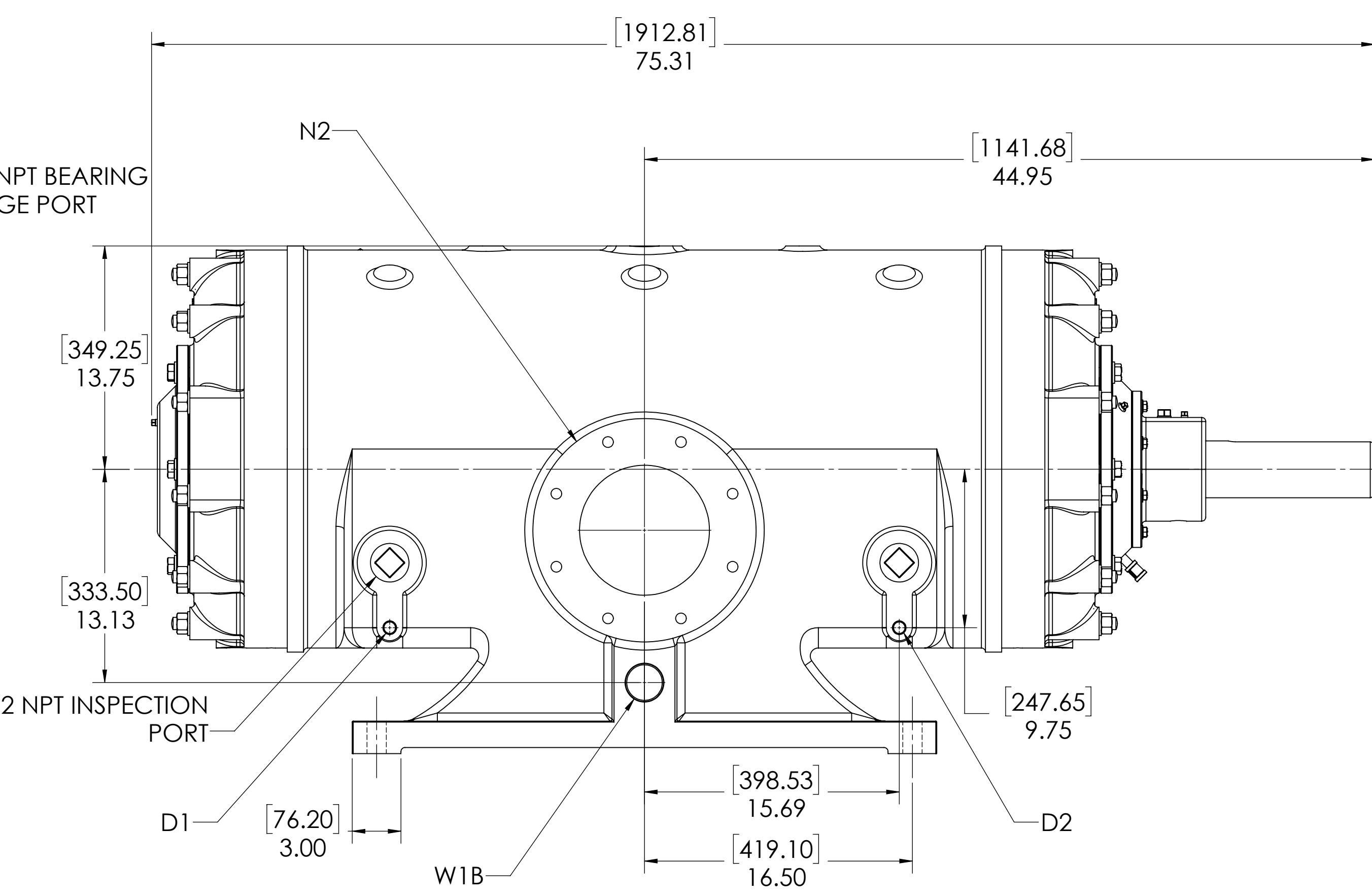
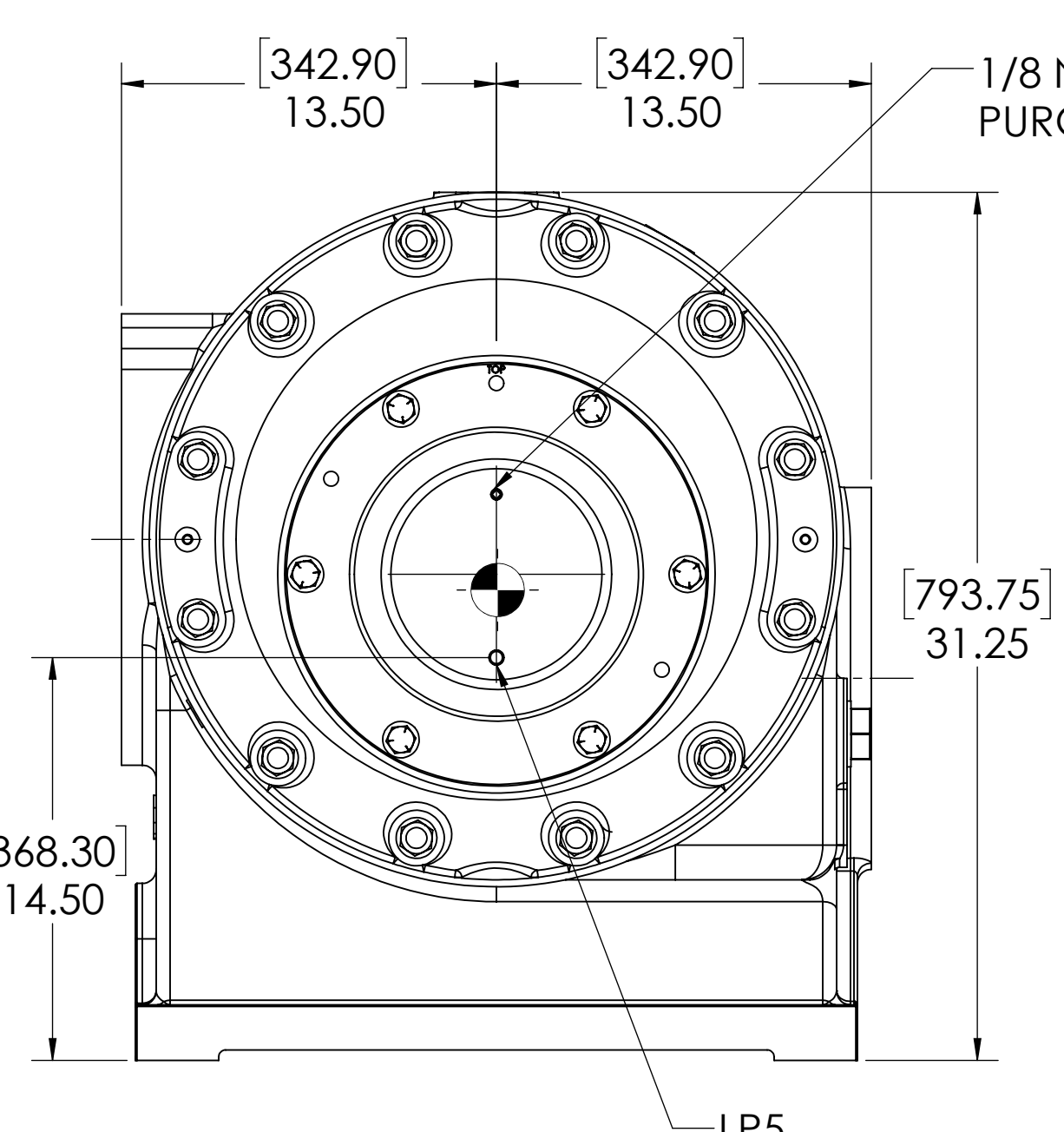
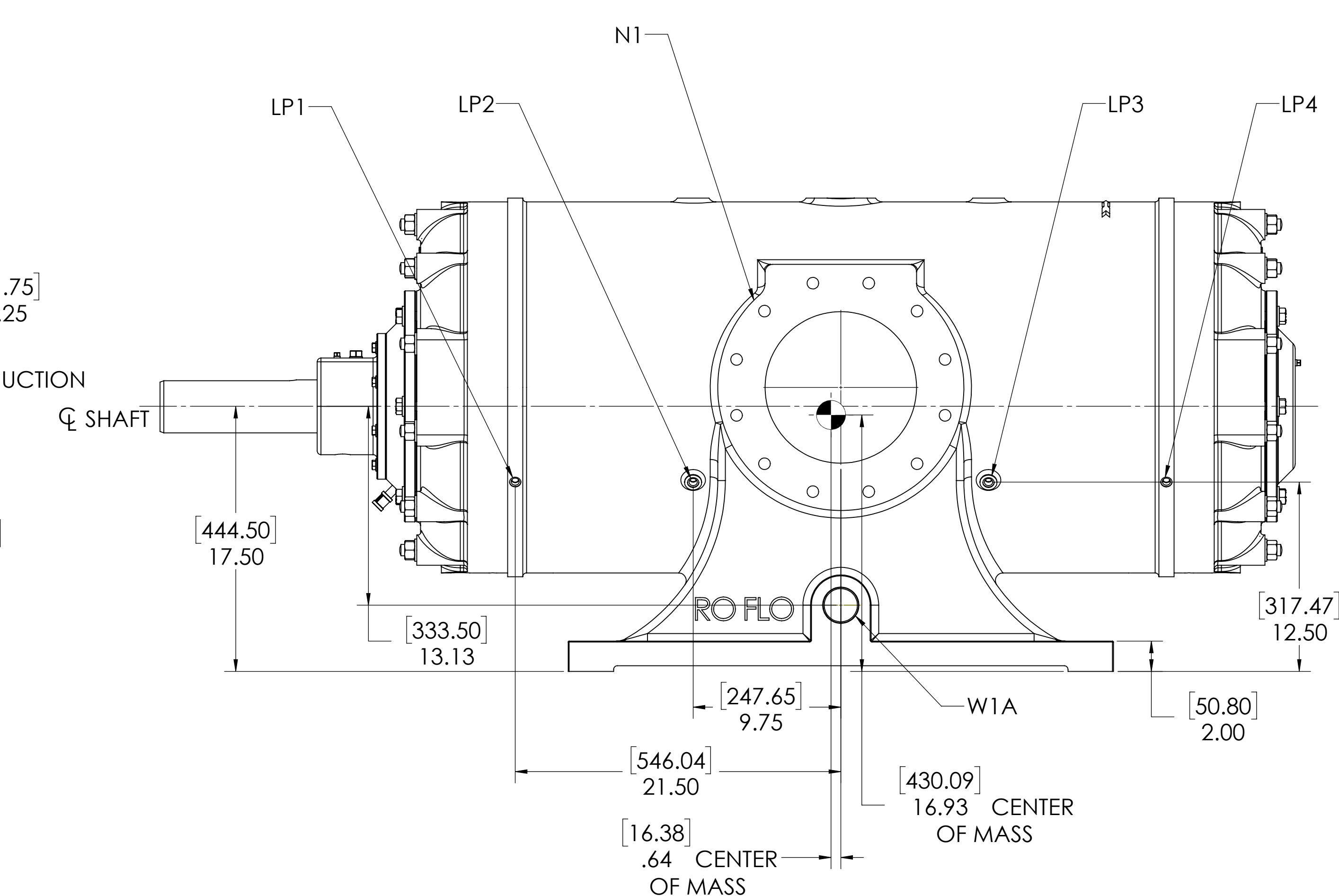
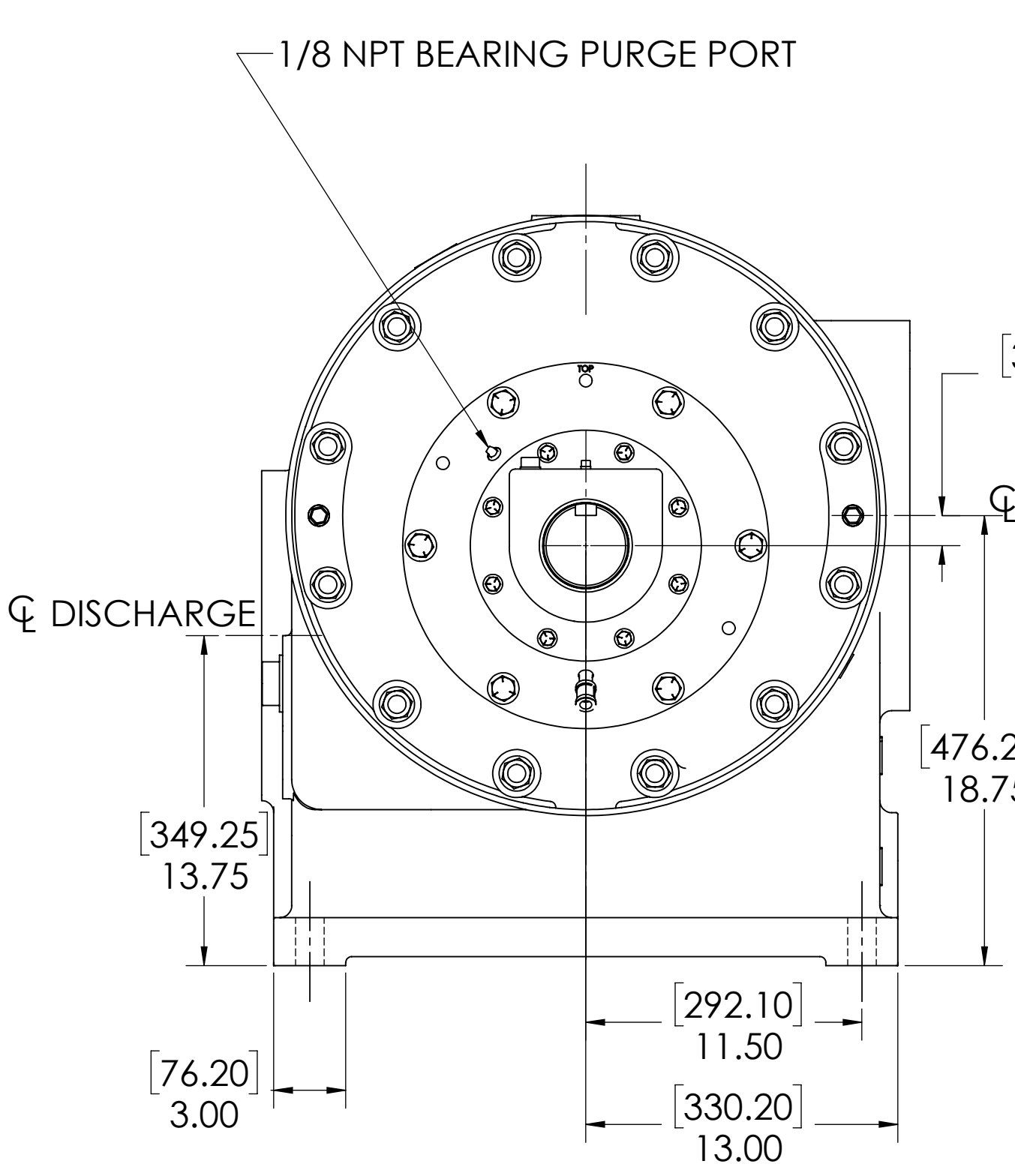
3/4-10 UNC - 2B ∇ .75 [19.05]
THIS IS A LIFTING HOLE FOR CYLINDER HEAD (MAINTENANCE) ONLY.
DO NOT USE THIS HOLE FOR LIFTING CYLINDER!

\square ϕ 1.25 [31.75] ∇ .05 FLAT CREATED
FOR MOUNTING ACCELEROMETER
CENTERED ON LIFTING HOLE.

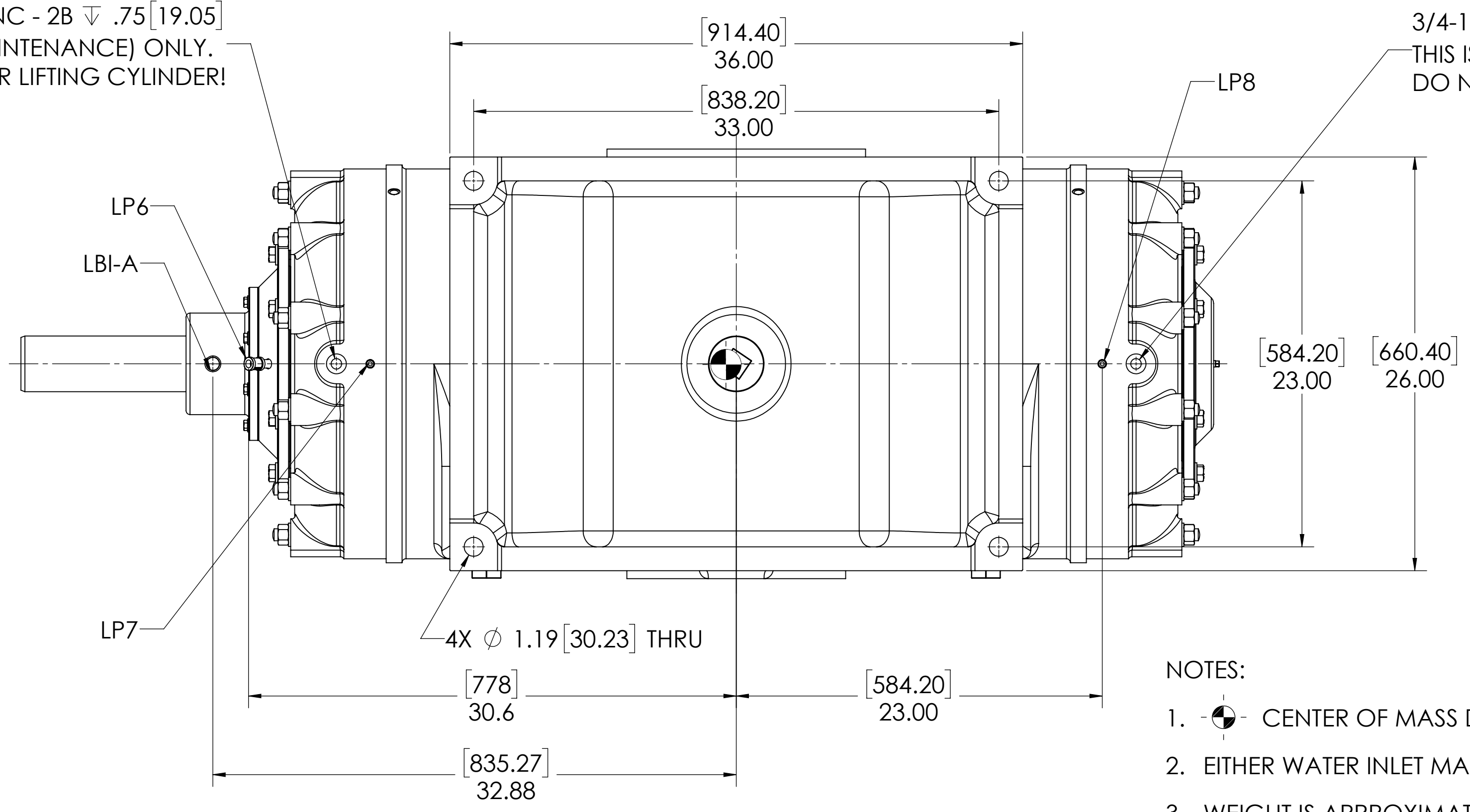


[927.10]
36.50 CLEARANCE REQUIRED
TO REMOVE ROTOR BLADES

[203.20]
8.00 CLEARANCE REQUIRED
TO REMOVE CYLINDER HEAD
AND END COVER.



3/4-10 UNC - 2B ∇ .75 [19.05]
THIS IS A LIFTING HOLE FOR CYLINDER HEAD (MAINTENANCE) ONLY.
DO NOT USE THIS HOLE FOR LIFTING CYLINDER!



3/4-10 UNC - 2B ∇ .75 [19.05]
THIS IS A LIFTING HOLE FOR CYLINDER HEAD (MAINTENANCE) ONLY.
DO NOT USE THIS HOLE FOR LIFTING CYLINDER!

- NOTES:
- CENTER OF MASS DIMENSIONS ARE APPROXIMATE
 - EITHER WATER INLET MAY BE USED, DEPENDING UPON SYSTEM NEEDS
 - WEIGHT IS APPROXIMATE
 - THIS DRAWING IS DUAL DIMENSION. DIMENSIONS ARE IN INCHES, DIMENSIONS IN [BRACKETS] ARE IN MILLIMETERS.

OIL CONNECTION POINTS SUMMARY		
(REFER TO MANUAL FOR FURTHER INFORMATION)		
DESCRIPTION	THREAD SIZE	QTY
LUBE QUILL (LQx)	1/4 NPT (F)	2
LUBE POINTS (LPx)	1/4 NPT (F)	8
SEAL SUPPLY (LBI-A)	1/2 NPT (F)	1
SEAL RETURN (LBO-A)	1/2 NPT (F)	1

	FLANGE CONNECTIONS	BOLT HOLE SIZE
N1	10" GAS SUCTION FLANGE (ANSI CLASS 150 FLAT FACE)	12 x 7/8-9 ∇ 1.38
N2	8" GAS DISCHARGE FLANGE (ANSI CLASS 150 FLAT FACE)	8 x 3/4-10 ∇ 1.12
W1A	2 NPT(F) WATER INLET (SEE NOTE 2)	N/A
W1B	2 NPT(F) WATER INLET (SEE NOTE 2)	N/A
W2	2 NPT(F) WATER OUTLET	N/A
D1	1/2 NPT(F) DRAIN HOLE	N/A
D2	1/2 NPT(F) DRAIN HOLE	N/A

UNLESS OTHERWISE SPECIFIED, DIMENSIONS ARE IN INCHES. TOLERANCES: ANGULAR: MACH 3 DEG; DIMENSIONS: FRACTIONS: 1/16 AND 1/32 PLACE DECIMAL; 1/8 AND 1/4 PLACE DECIMAL; 1/2 AND 3/4 PLACE DECIMAL; 1.000. INTERFERE GEOMETRIC TOLERANCING PER: ASME Y14.5-2009. PROPERTIES: OTHER NOTES: NAME: DATE: 1/13/2020. DRAWN: TRF. CHECKED: TRF. 1/13/2020. ENG APPR: TRF. 1/13/2020. PROPRIETARY AND CONFIDENTIAL. THE INFORMATION CONTAINED IN THIS DRAWING IS THE SOLE PROPERTY OF RORO COMPRESSORS, LLC. IT IS TO BE USED ONLY FOR THE MANUFACTURE OF RORO COMPRESSORS, LLC. S. PART NO. 195, CCW, DBS. GENERAL ARRANGEMENT, 195, CCW, DBS. E 16-123-633-432 12. SCALE: 1:6. 5100 LBS. SHEET 1 OF 1.