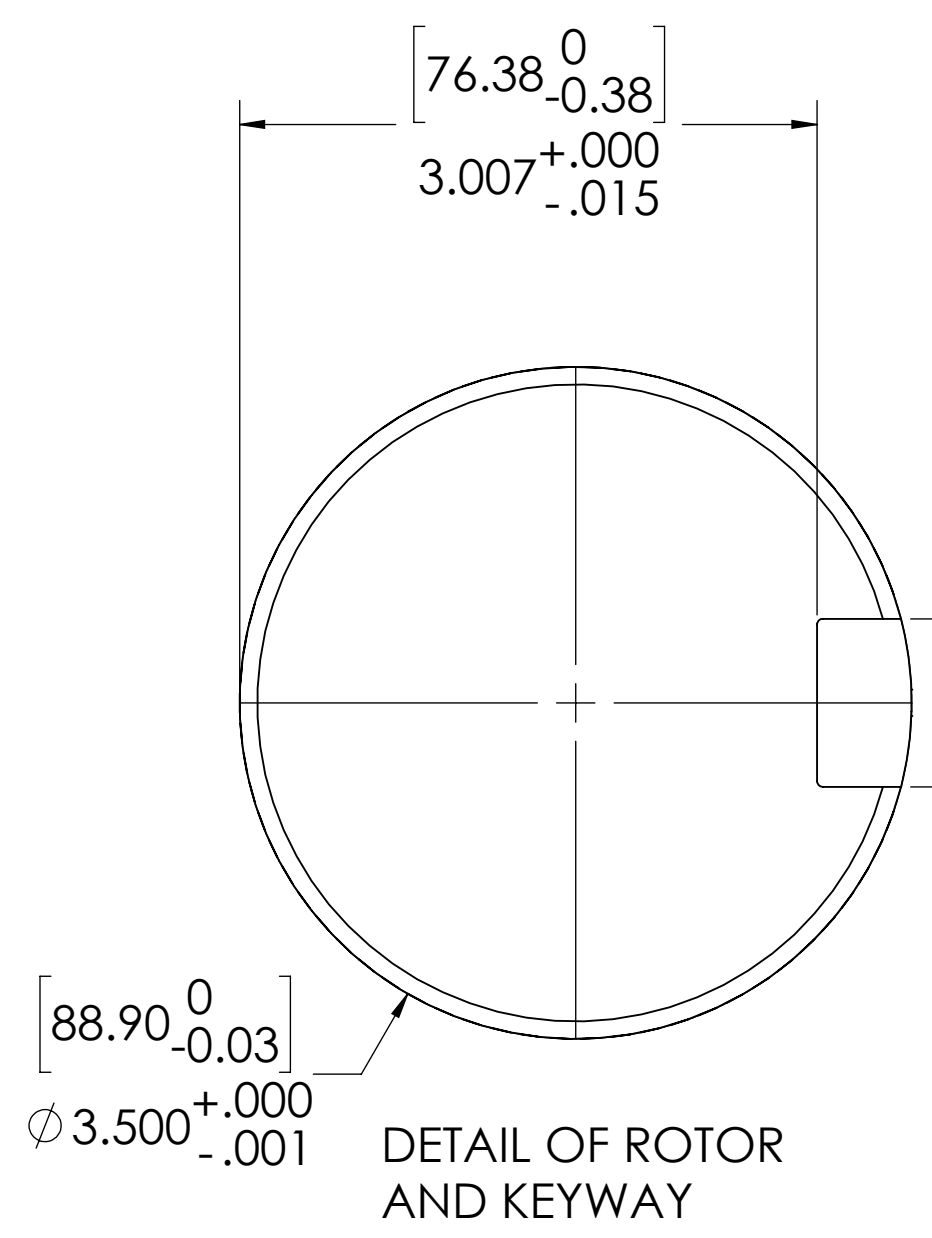
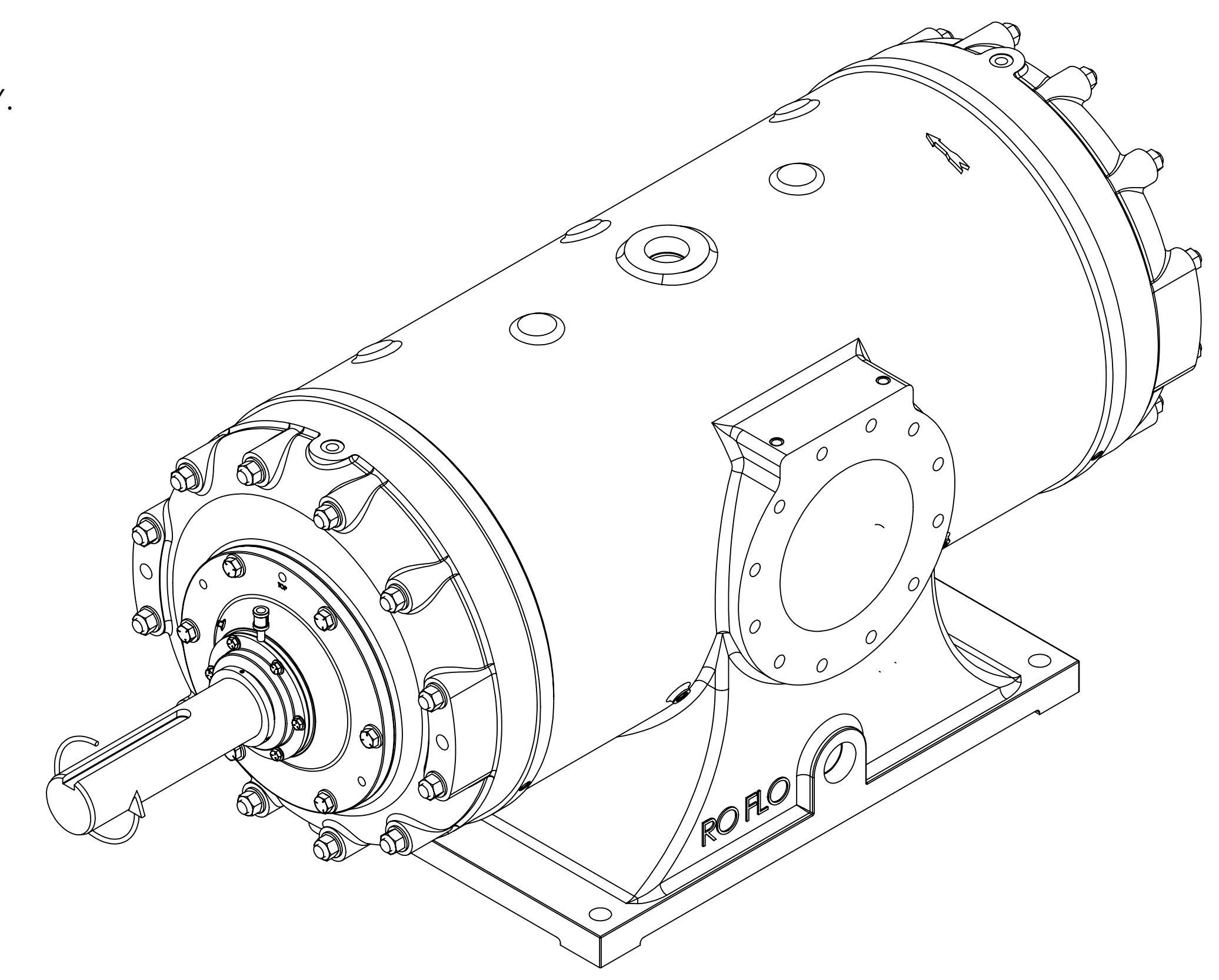


3/4-10 UNC - 2B ∇ .75 [19.05]
THIS IS A LIFTING HOLE FOR CYLINDER HEAD (MAINTENANCE) ONLY.
DO NOT USE THIS HOLE FOR LIFTING CYLINDER!

\square ϕ 1.25 [31.75] ∇ .05 FLAT CREATED
FOR MOUNTING ACCELEROMETER
CENTERED ON LIFTING HOLE.

3/4-10 UNC - 2B ∇ .75 [19.05]
THIS IS A LIFTING HOLE FOR CYLINDER HEAD (MAINTENANCE) ONLY.
DO NOT USE THIS HOLE FOR LIFTING CYLINDER!

\square ϕ 1.25 [31.75] ∇ .05 FLAT CREATED
FOR MOUNTING ACCELEROMETER
CENTERED ON LIFTING HOLE.

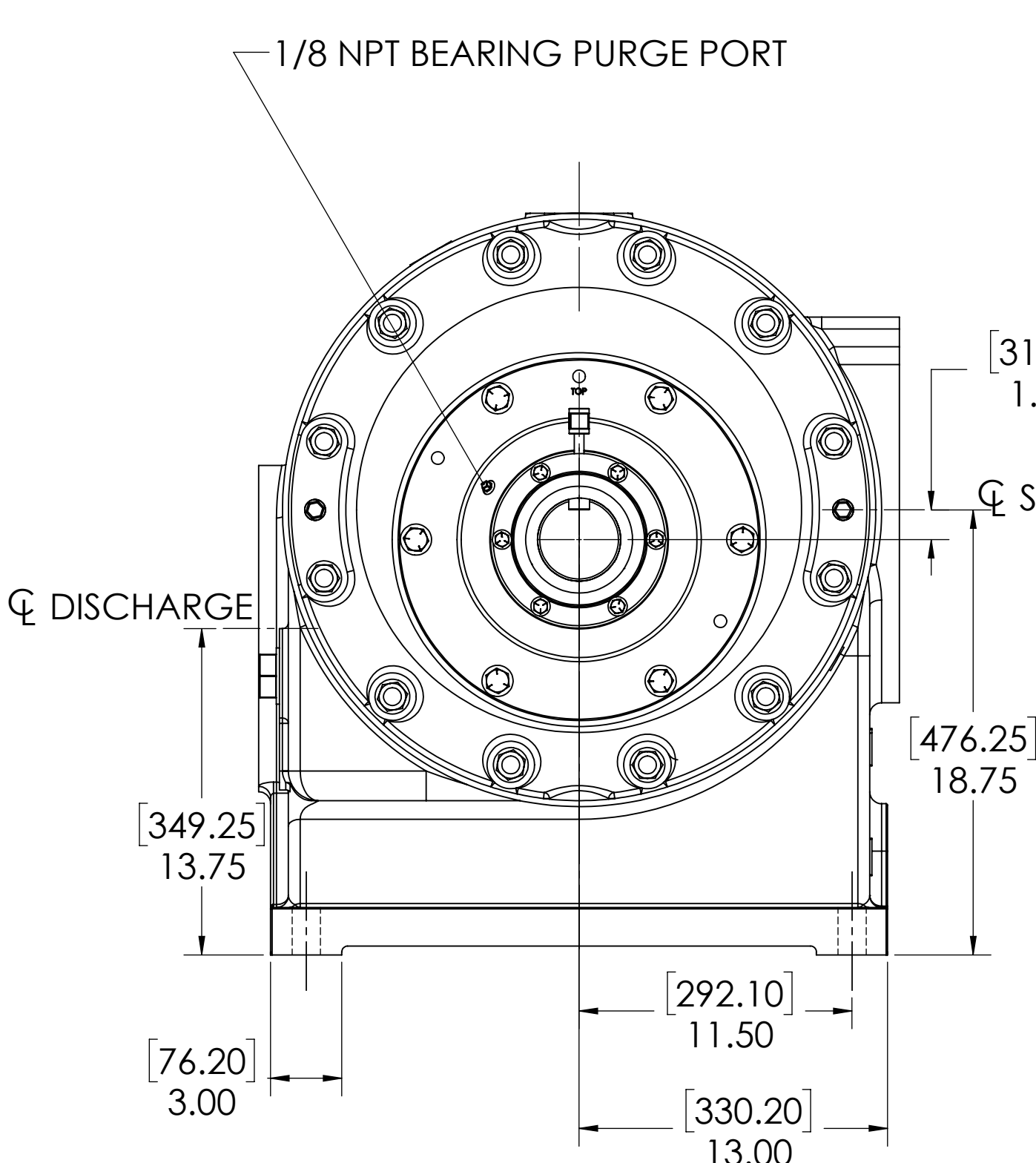


DETAIL OF ROTOR AND KEYWAY

[215.90]
8.50 CLEARANCE REQUIRED
TO REMOVE CYLINDER HEAD
AND SEAL ADAPTER

[927.10]
36.50 CLEARANCE REQUIRED
TO REMOVE ROTOR BLADES

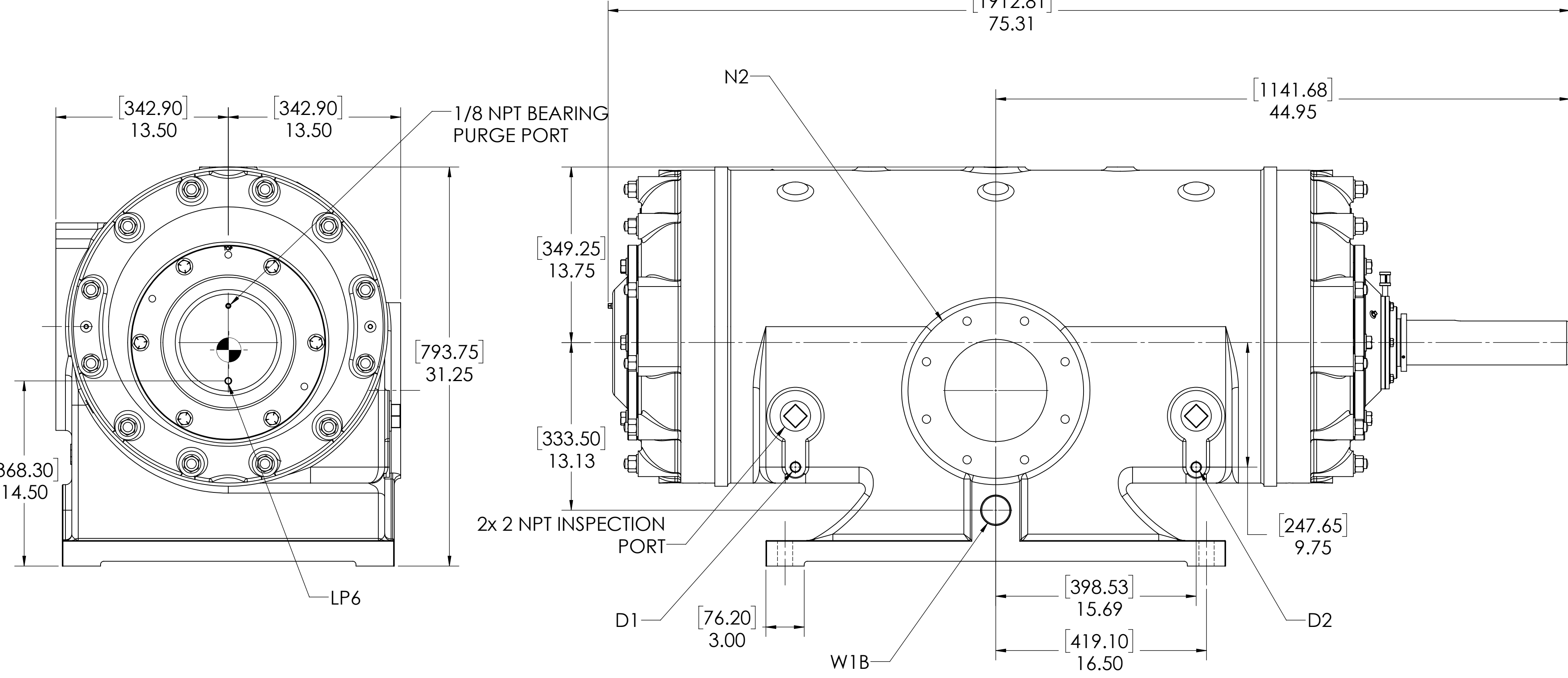
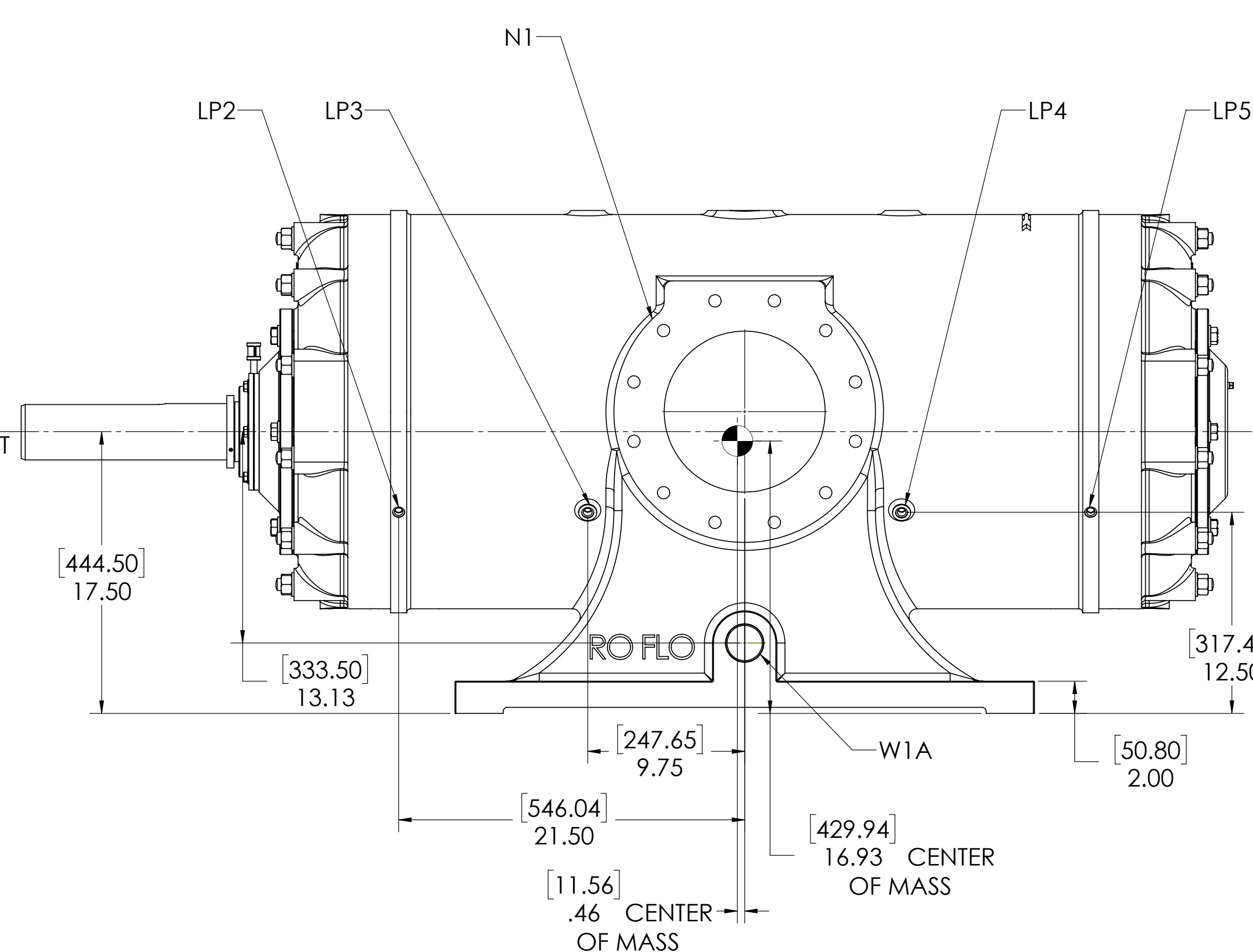
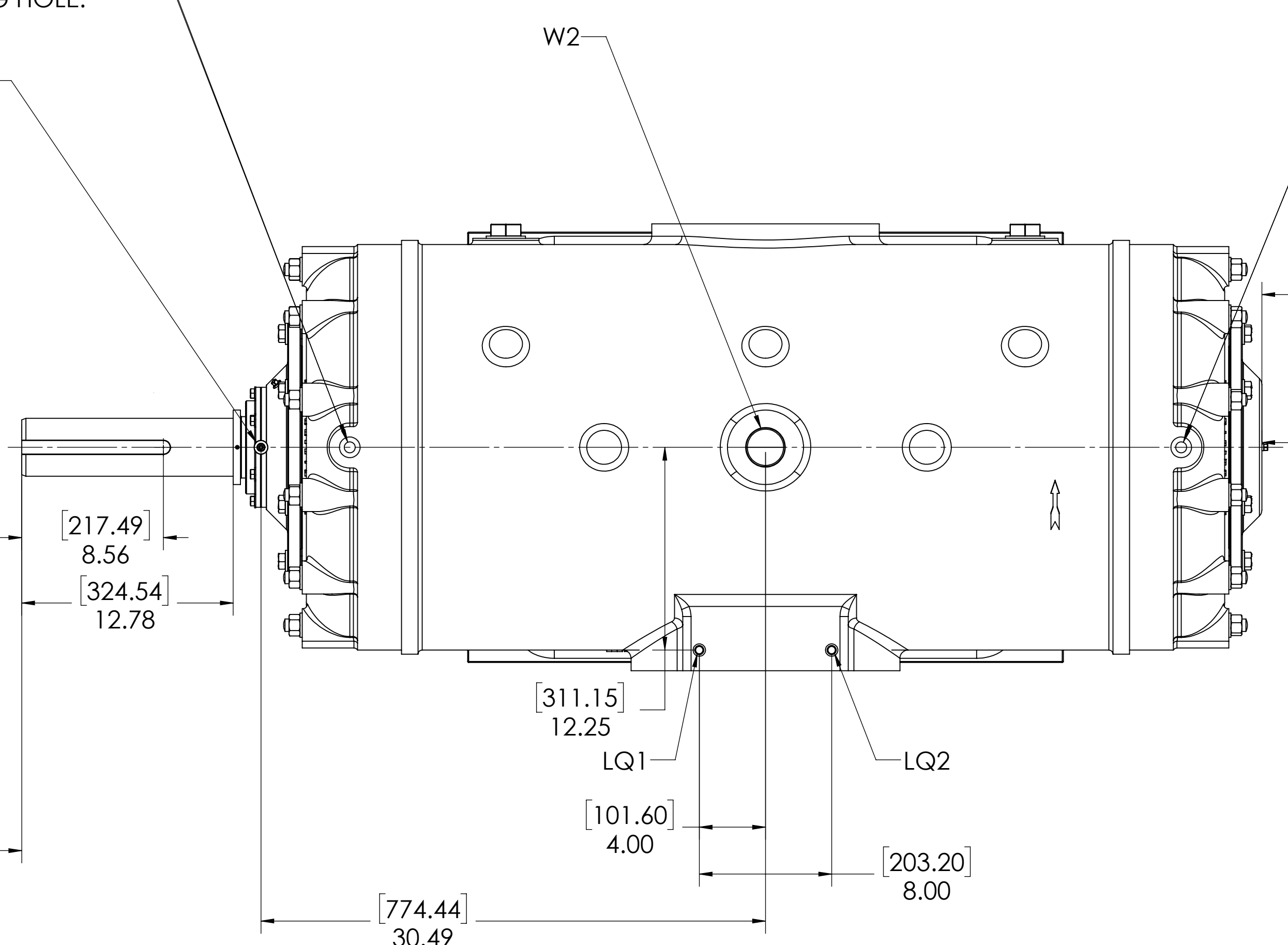
[203.20]
8.00 CLEARANCE REQUIRED
TO REMOVE CYLINDER HEAD AND
END COVER.



1/8 NPT BEARING PURGE PORT

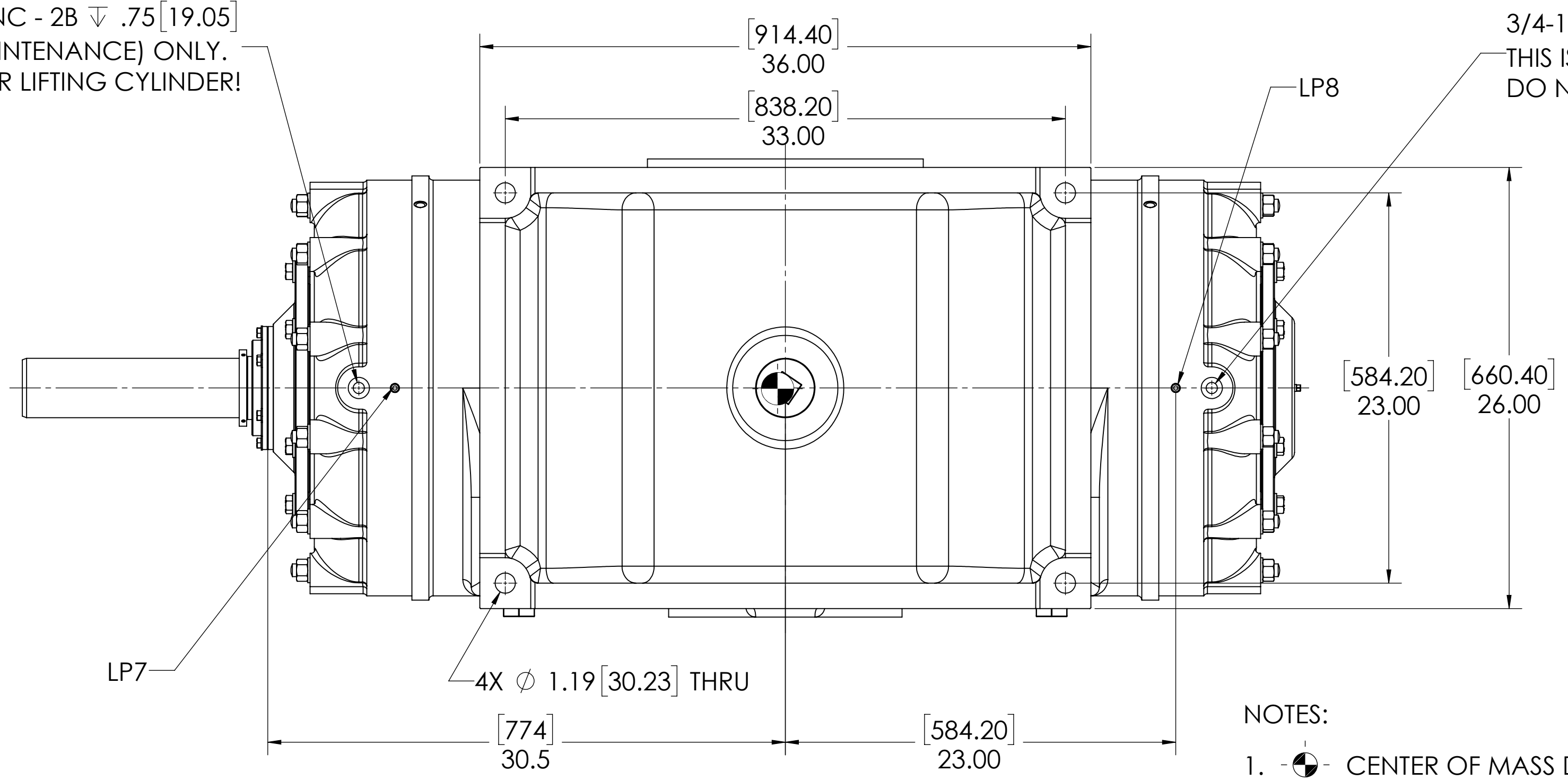
ϕ SUCTION

ϕ DISCHARGE



3/4-10 UNC - 2B ∇ .75 [19.05]
THIS IS A LIFTING HOLE FOR CYLINDER HEAD (MAINTENANCE) ONLY.
DO NOT USE THIS HOLE FOR LIFTING CYLINDER!

3/4-10 UNC - 2B ∇ .75 [19.05]
THIS IS A LIFTING HOLE FOR CYLINDER HEAD (MAINTENANCE) ONLY.
DO NOT USE THIS HOLE FOR LIFTING CYLINDER!



- NOTES:
- CENTER OF MASS DIMENSIONS ARE APPROXIMATE
 - EITHER WATER INLET MAY BE USED, DEPENDING UPON SYSTEM NEEDS
 - WEIGHT IS APPROXIMATE
 - THIS DRAWING IS DUAL DIMENSION. DIMENSIONS ARE IN INCHES, DIMENSIONS IN [BRACKETS] ARE IN MILLIMETERS.

OIL CONNECTION POINTS SUMMARY		
(REFER TO MANUAL FOR FURTHER INFORMATION)		
DESCRIPTION	THREAD SIZE	QTY
LUBE QUILL (LQx)	1/4 NPT (F)	2
LUBE POINTS (LPx)	1/4 NPT (F)	8

	FLANGE CONNECTIONS	BOLT HOLE SIZE
N1	10" GAS SUCTION FLANGE (ANSI CLASS 150 FLAT FACE)	12 x 7/8-9 ∇ 1.38
N2	8" GAS DISCHARGE FLANGE (ANSI CLASS 150 FLAT FACE)	8 x 3/4-10 ∇ 1.12
W1A	2 NPT(F) WATER INLET (SEE NOTE 2)	N/A
W1B	2 NPT(F) WATER INLET (SEE NOTE 2)	N/A
W2	2 NPT(F) WATER OUTLET	N/A
D1	1/2 NPT(F) DRAIN HOLE	N/A
D2	1/2 NPT(F) DRAIN HOLE	N/A

UNLESS OTHERWISE SPECIFIED, DIMENSIONS ARE IN INCHES. TOLERANCES:

ANGULAR	MACH 2 DEG	NAME	DATE
CHAMFER	1:3	DESIGNED	8/5/2019
DRILL	1:10	CHECKED	TSS 8/5/2019
FACE	0.004	ENG APPR	TSS 8/5/2019
FLAT	0.004	PROBATIONARY AND CONFIDENTIAL	
HOLE	0.004		
PERPENDICULARITY	0.004		
PLACEMENT	0.004		
ROUNDNESS	0.004		
SYMMETRY	0.004		
TAPER	0.004		
THICKNESS	0.004		
TOTAL RUNOUT	0.004		
WAVELENGTH	0.004		

Ro-Flo Compressors, LLC
GENERAL ARRANGEMENT, 19S, CCW, SF
E 16-123-633-532 06
SCALE 1:6 WEIGHT 5100 LBS SHEET 1 of 1