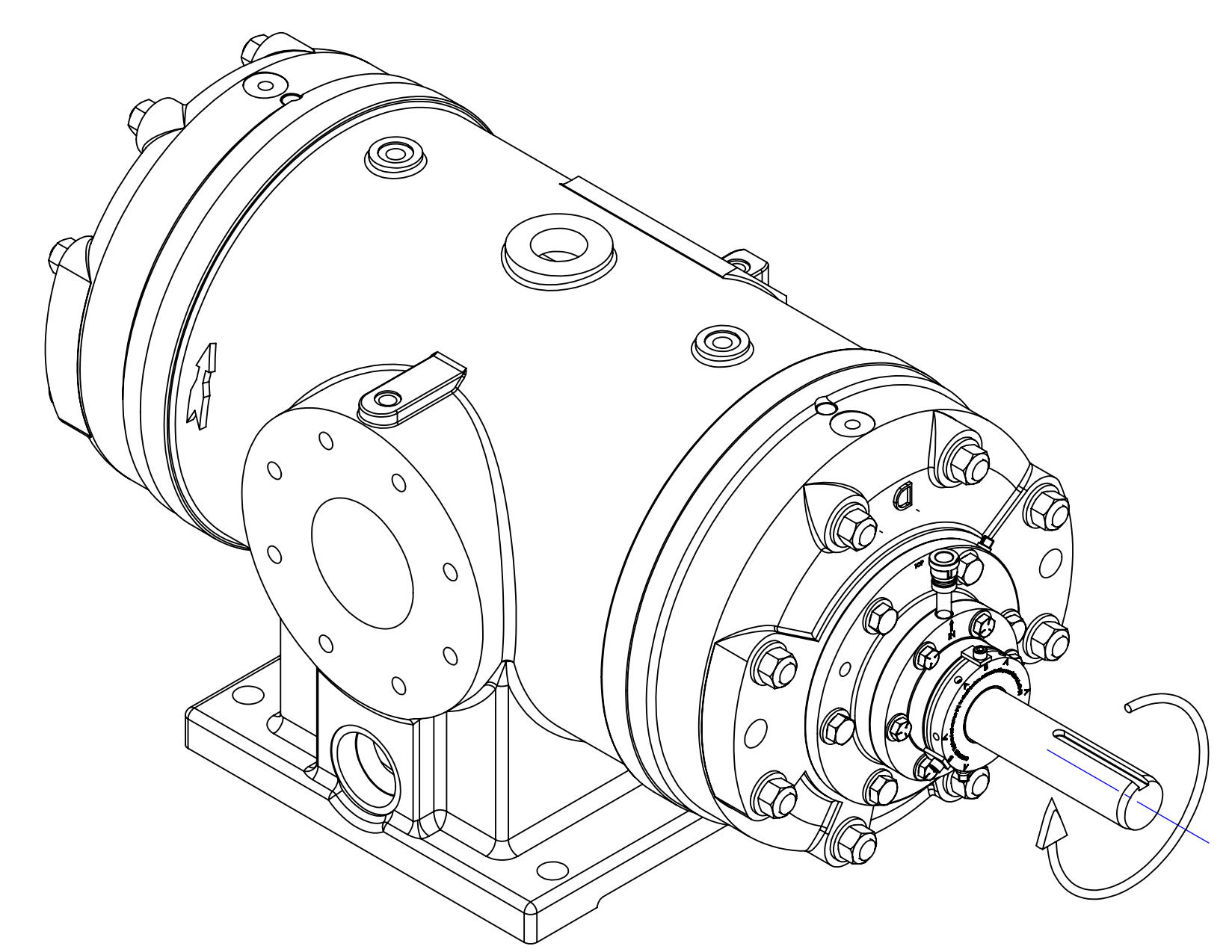


1/2-13 UNC - 2B ∇ .67 [17]
THIS IS A LIFTING HOLE FOR CYLINDER HEAD (MAINTENANCE) ONLY.
DO NOT USE THIS HOLE FOR LIFTING COMPRESSOR!

ϕ 1.25 [31.8] ∇ .04 FLAT MACHINED FOR
MOUNTING AN ACCELEROMETER.

1/4 NPT DISCHARGE
INSTRUMENTATION PORT

1/2-13 UNC - 2B ∇ .67 [17]
THIS IS A LIFTING HOLE FOR CYLINDER HEAD (MAINTENANCE) ONLY.
DO NOT USE THIS HOLE FOR LIFTING COMPRESSOR!
 ϕ 1.25 [31.8] ∇ .04 FLAT MACHINED FOR
MOUNTING AN ACCELEROMETER.

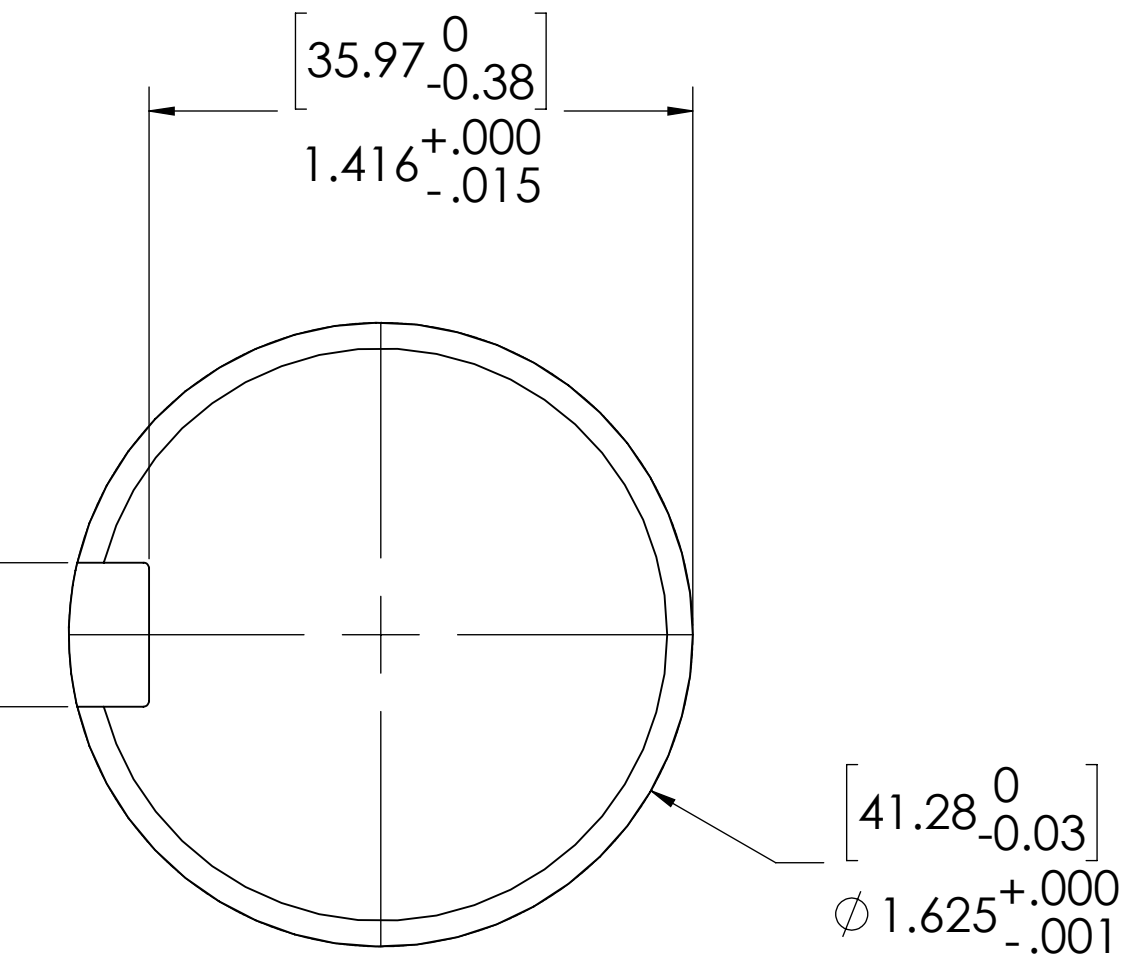


[355.6]
14.00 CLEARANCE REQUIRED
TO REMOVE ROTOR BLADES

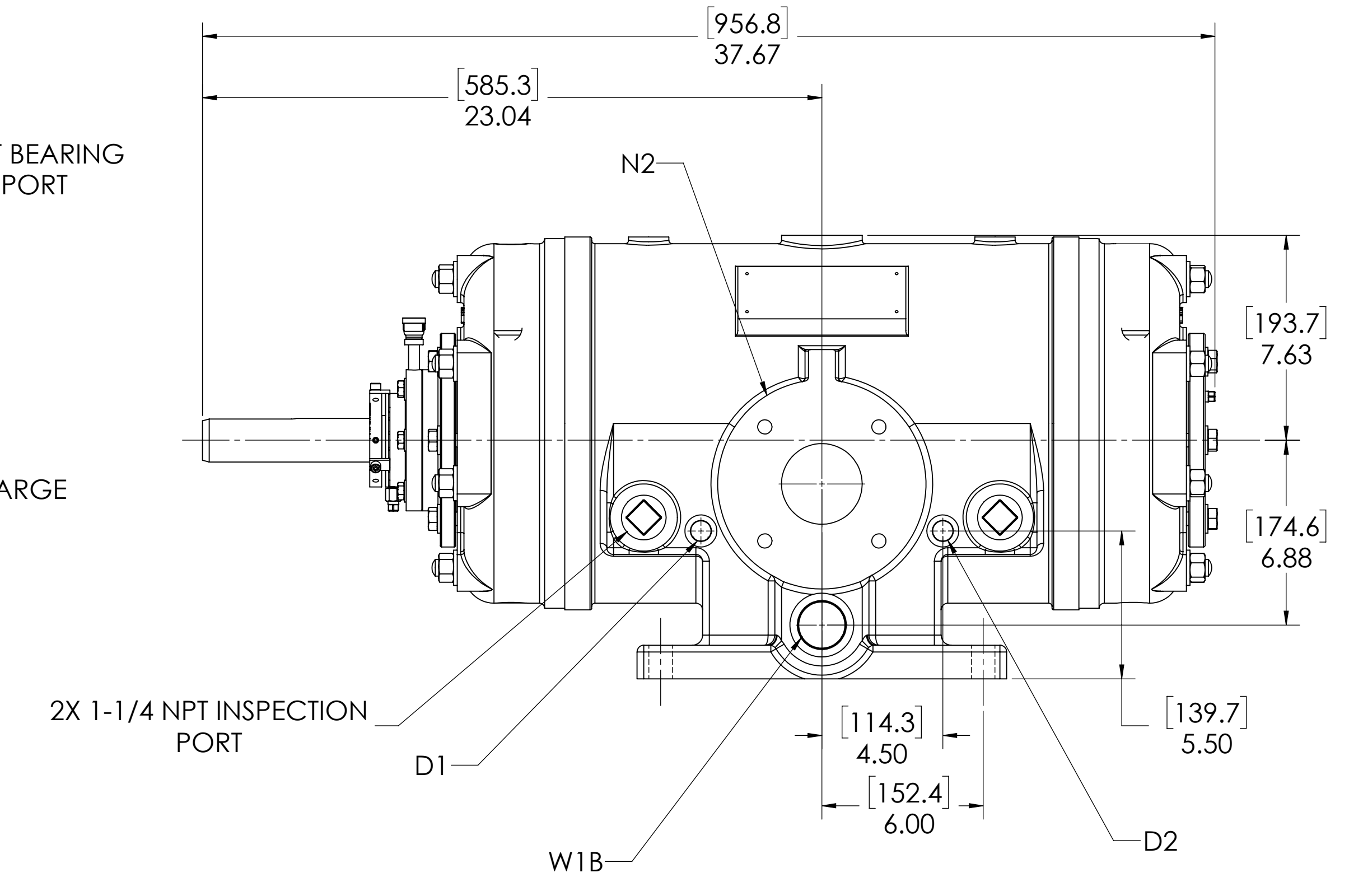
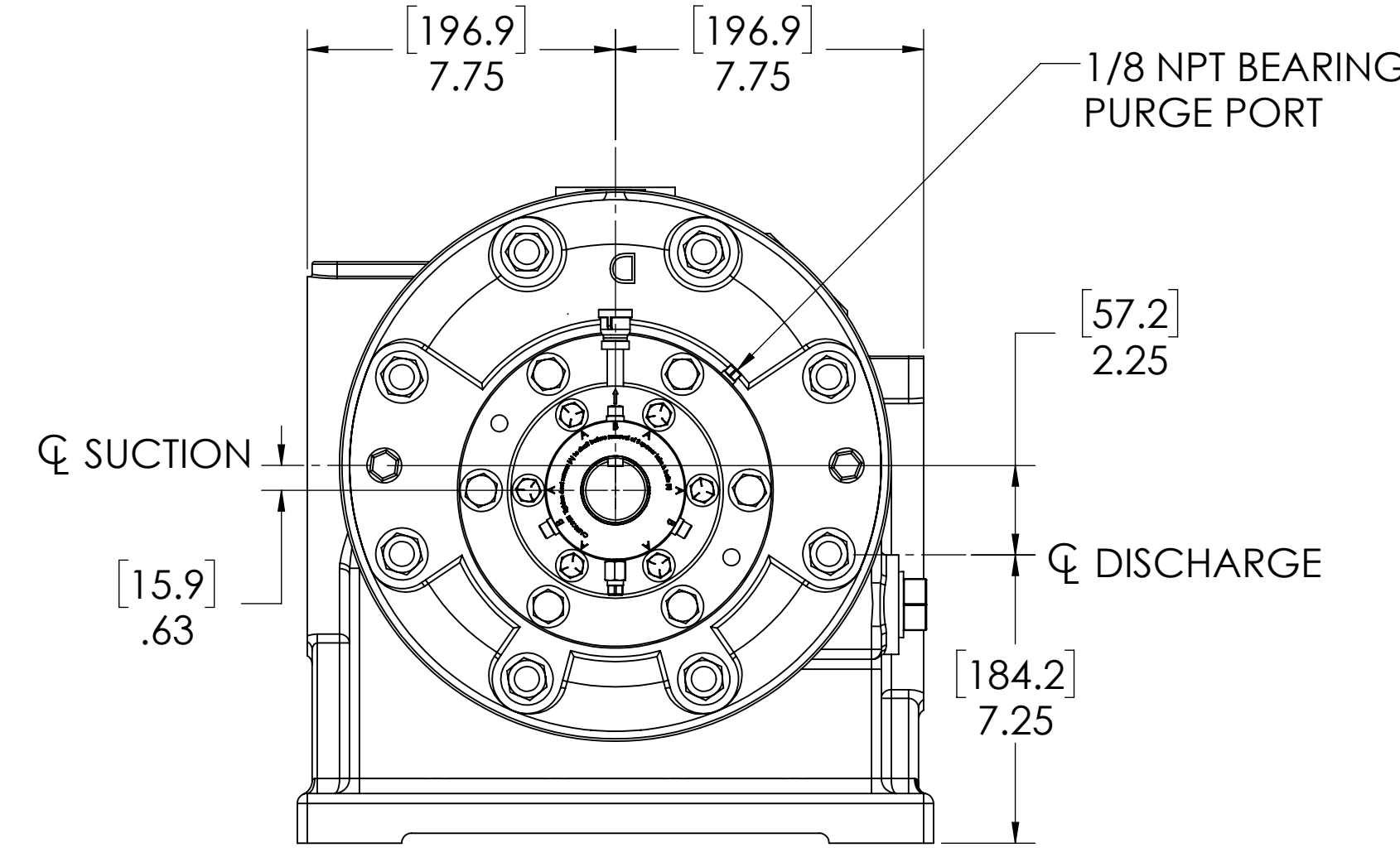
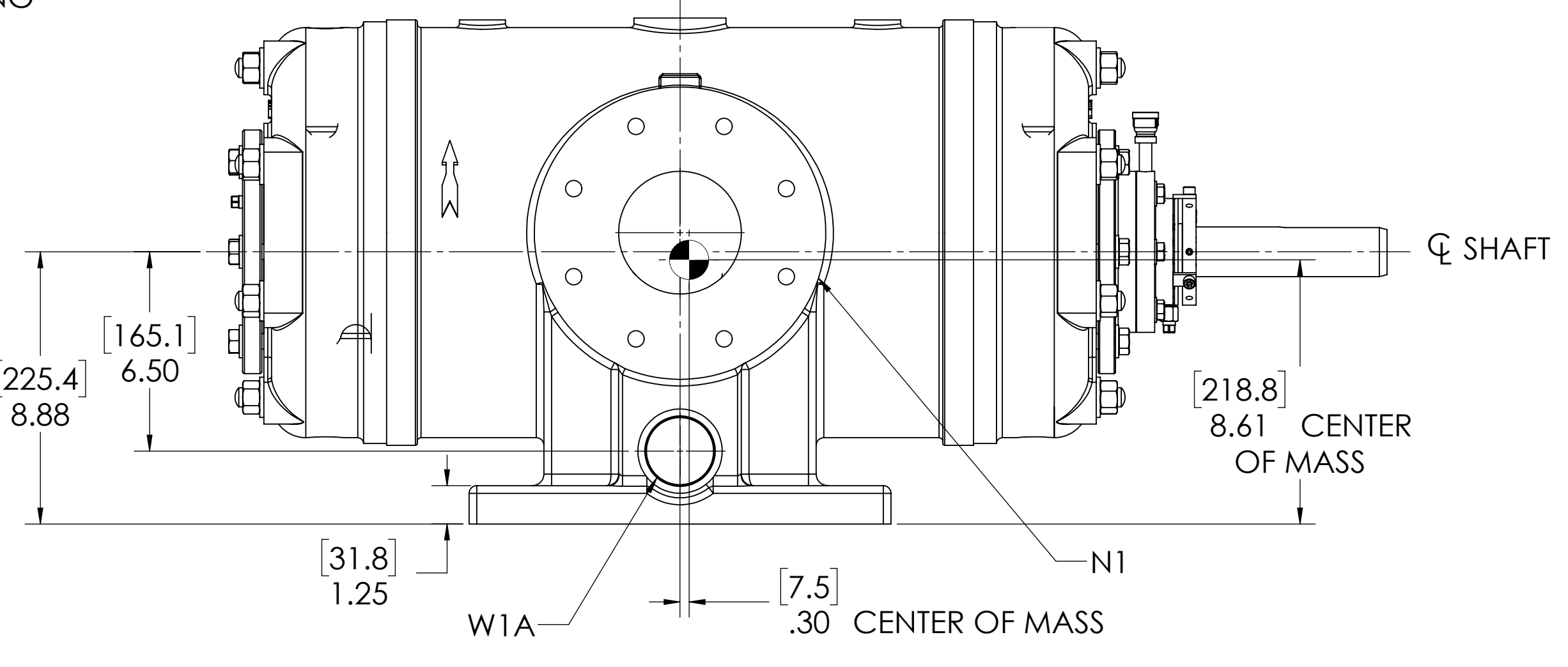
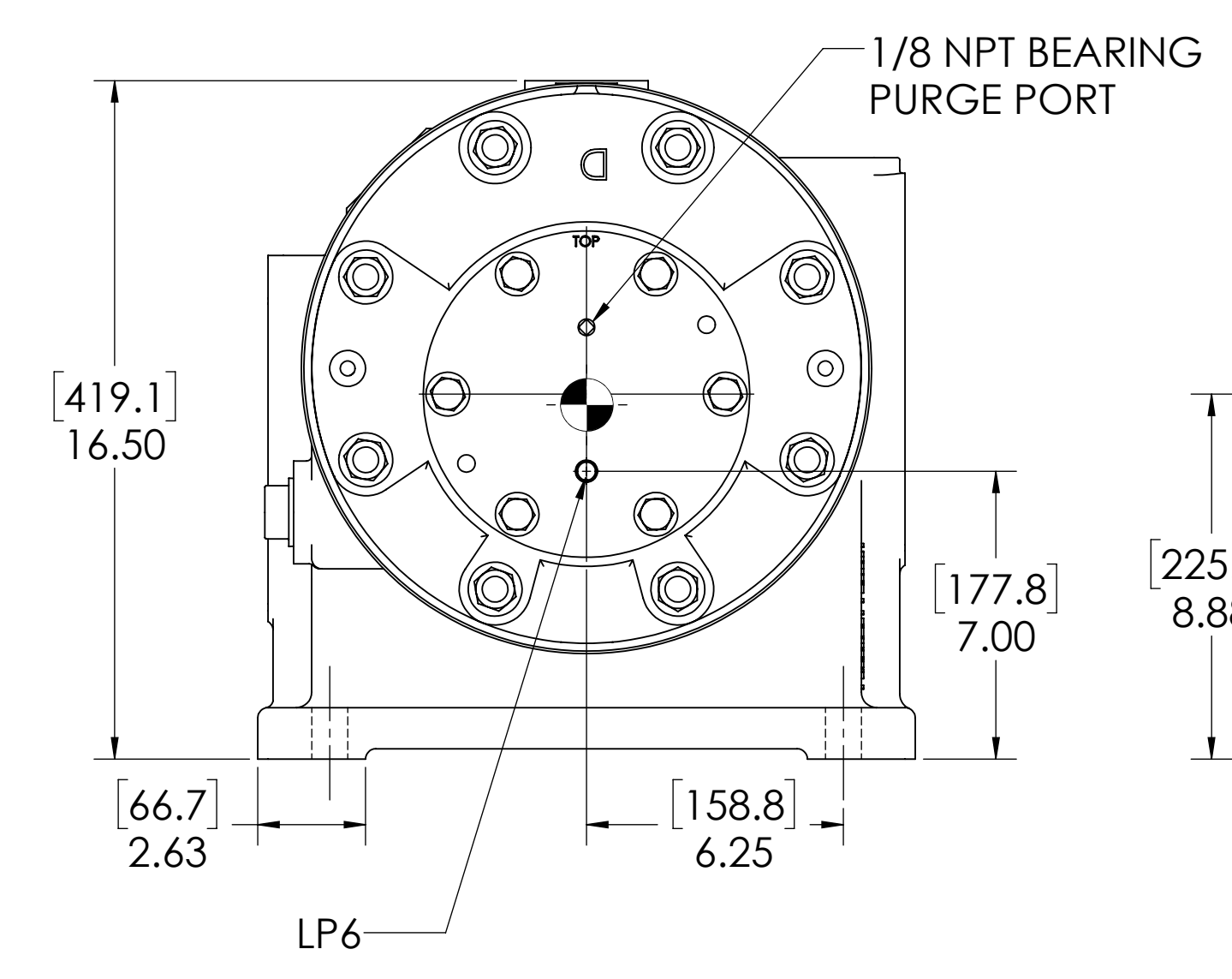
[133.4]
5.25 CLEARANCE REQUIRED
TO REMOVE CYLINDER HEAD
AND END COVER

[141.2]
5.56 CLEARANCE REQUIRED
TO REMOVE CYLINDER HEAD AND
SEAL ADAPTER

[9.53^{+0.05}₀
.375^{+0.02}_{-.000}

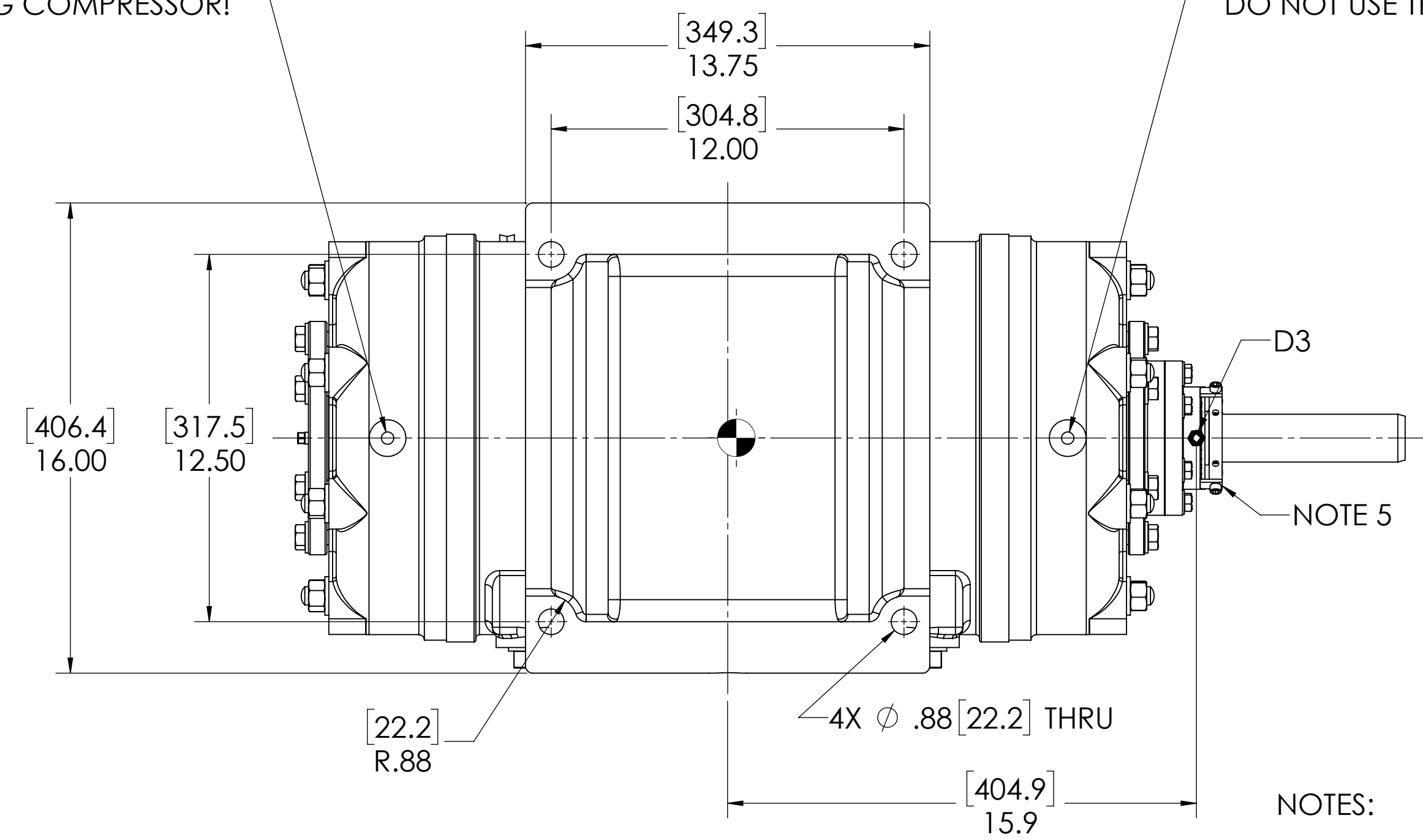


DETAIL OF ROTOR KEYWAY



1/2-13 UNC - 2B ∇ .67 [17]
THIS IS A LIFTING HOLE FOR CYLINDER HEAD (MAINTENANCE) ONLY.
DO NOT USE THIS HOLE FOR LIFTING COMPRESSOR!

1/2-13 UNC - 2B ∇ .67 [17]
THIS IS A LIFTING HOLE FOR CYLINDER HEAD (MAINTENANCE) ONLY.
DO NOT USE THIS HOLE FOR LIFTING COMPRESSOR!



- NOTES:
- CENTER OF MASS DIMENSIONS ARE APPROXIMATE
 - EITHER WATER INLET MAY BE USED, DEPENDING UPON SYSTEM NEEDS
 - WEIGHT IS APPROXIMATE
 - THIS DRAWING IS DUAL DIMENSION. DIMENSIONS WITHOUT BRACKETS ARE IN INCHES, DIMENSIONS IN [BRACKETS] ARE IN MILLIMETERS.
 - REMOVE (3) RED SEAL LOCKING TABS BEFORE OPERATION. RETAIN TABS AND SCREWS FOR SERVICE (TABS MUST BE INSTALLED BEFORE SEAL REMOVAL).

NOZZLE CONNECTIONS		BOLT HOLE SIZE
N1	4" GAS SUCTION FLANGE (ANSI CLASS 150 FLAT FACE)	8 x 5/8-11 ∇ 1.00
N2	3" GAS DISCHARGE FLANGE (ANSI CLASS 150 FLAT FACE)	4 x 5/8-11 ∇ 1.00
W1A	2 NPT(F) WATER INLET (SEE NOTE 2)	N/A
W1B	1-1/2 NPT(F) WATER INLET (SEE NOTE 2)	N/A
W2	1-1/4 NPT(F) WATER OUTLET	N/A
D1	1/2 NPT (F) DRAIN HOLE	N/A
D2	1/2 NPT (F) DRAIN HOLE	N/A
D3	1/8 NPT (F) SEAL WEEPAGE DRAIN	N/A

LUBRICATION OIL CONNECTION (REFER TO MANUAL FOR FURTHER INFORMATION)		
DESCRIPTION	THREAD SIZE	QTY
LUBE QUILL(LQ)	1/4 NPT(F)	1
LUBE POINTS(LPx)	1/4 NPT(F)	6

UNLESS OTHERWISE SPECIFIED: DIMENSIONS ARE IN INCHES TOLERANCES: ANGULAR MACH-S DEG ONE PLACE DECIMAL ±.000 THREE PLACE DECIMAL ±.001 THREE PLACE DECIMAL ±.001 FOUR PLACE DECIMAL ±.0005 FIVE PLACE DECIMAL ±.00025
DRAWING IS THE SOLE PROPERTY OF RO-FLO COMPRESSORS, LLC. ANY REPRODUCTION OF THIS DRAWING WITHOUT THE WRITTEN PERMISSION OF RO-FLO COMPRESSORS, LLC IS PROHIBITED.

NAME: DATE: 12/17/2019
DRAWN: TRF 12/17/2019
CHECKED: TRF 12/17/2019
INCH/PT: TRF 12/17/2019
RO-FLO COMPRESSORS, LLC
16-123-634-505
GENERAL ARRANGEMENT,
8DE, CW, SC
E 16-123-634-505 00
SCALE: 1:4 800 LBS 1 OF 1