

3/4-10 UNC - 2B  $\nabla$  .75 [19.05]  
THIS IS A LIFTING HOLE FOR CYLINDER HEAD (MAINTENANCE) ONLY.  
DO NOT USE THIS HOLE FOR LIFTING CYLINDER!

$\phi$  .66  $\nabla$  1.00  
 $\nabla$   $\phi$  1.25 [31.75]  $\nabla$  .05 FLAT CREATED  
FOR MOUNTING ACCELEROMETER  
CENTERED ON LIFTING HOLE.

3/4-10 UNC - 2B  $\nabla$  .75 [19.05]  
THIS IS A LIFTING HOLE FOR CYLINDER HEAD (MAINTENANCE) ONLY.  
DO NOT USE THIS HOLE FOR LIFTING CYLINDER!

$\nabla$   $\phi$  1.25 [31.75]  $\nabla$  .05 FLAT CREATED  
FOR MOUNTING ACCELEROMETER  
CENTERED ON LIFTING HOLE.

[927.10]  
36.50 CLEARANCE REQUIRED  
TO REMOVE ROTOR BLADES

[209.55]  
8.25 CLEARANCE REQUIRED TO  
REMOVE CYLINDER HEAD AND  
END COVER.

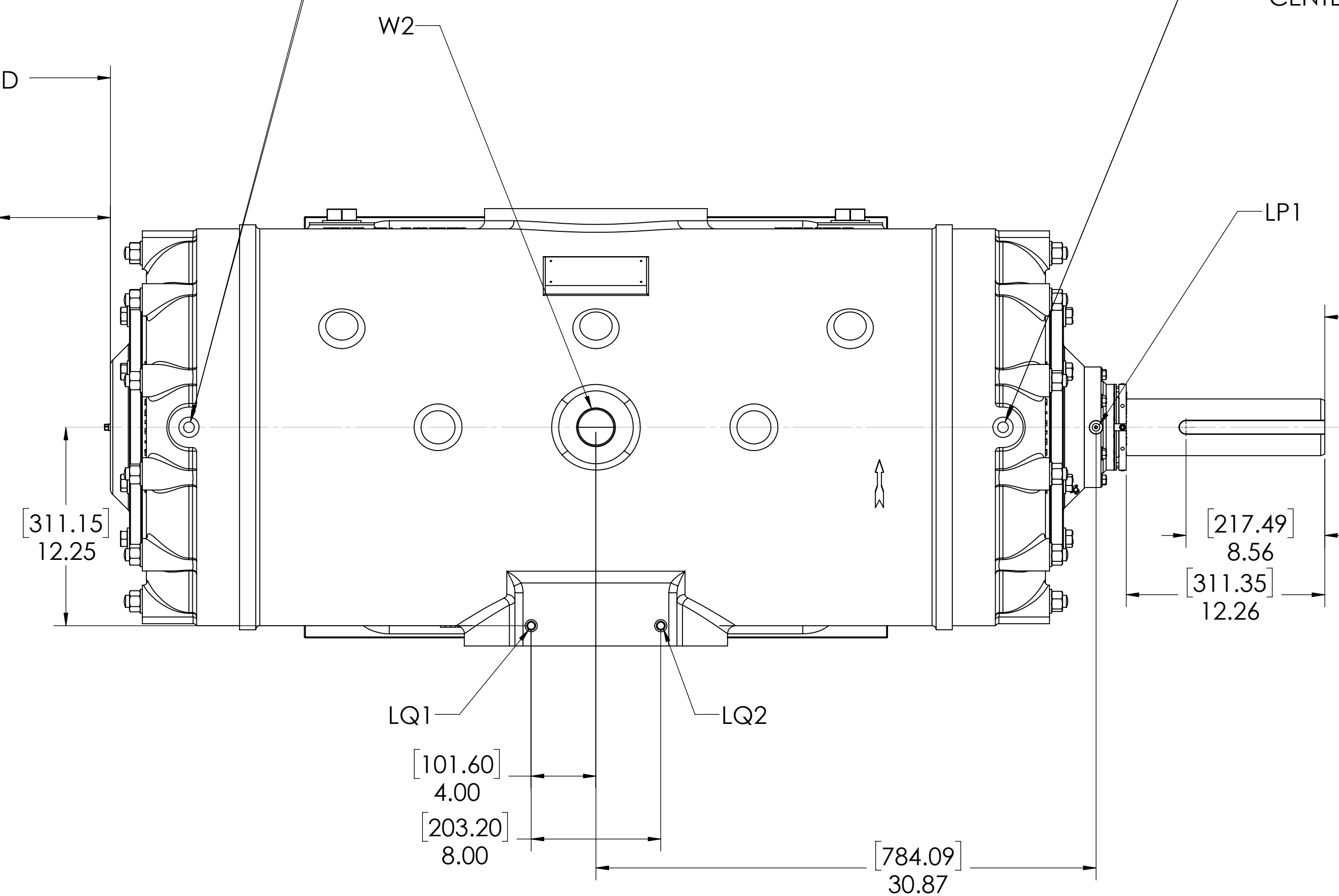
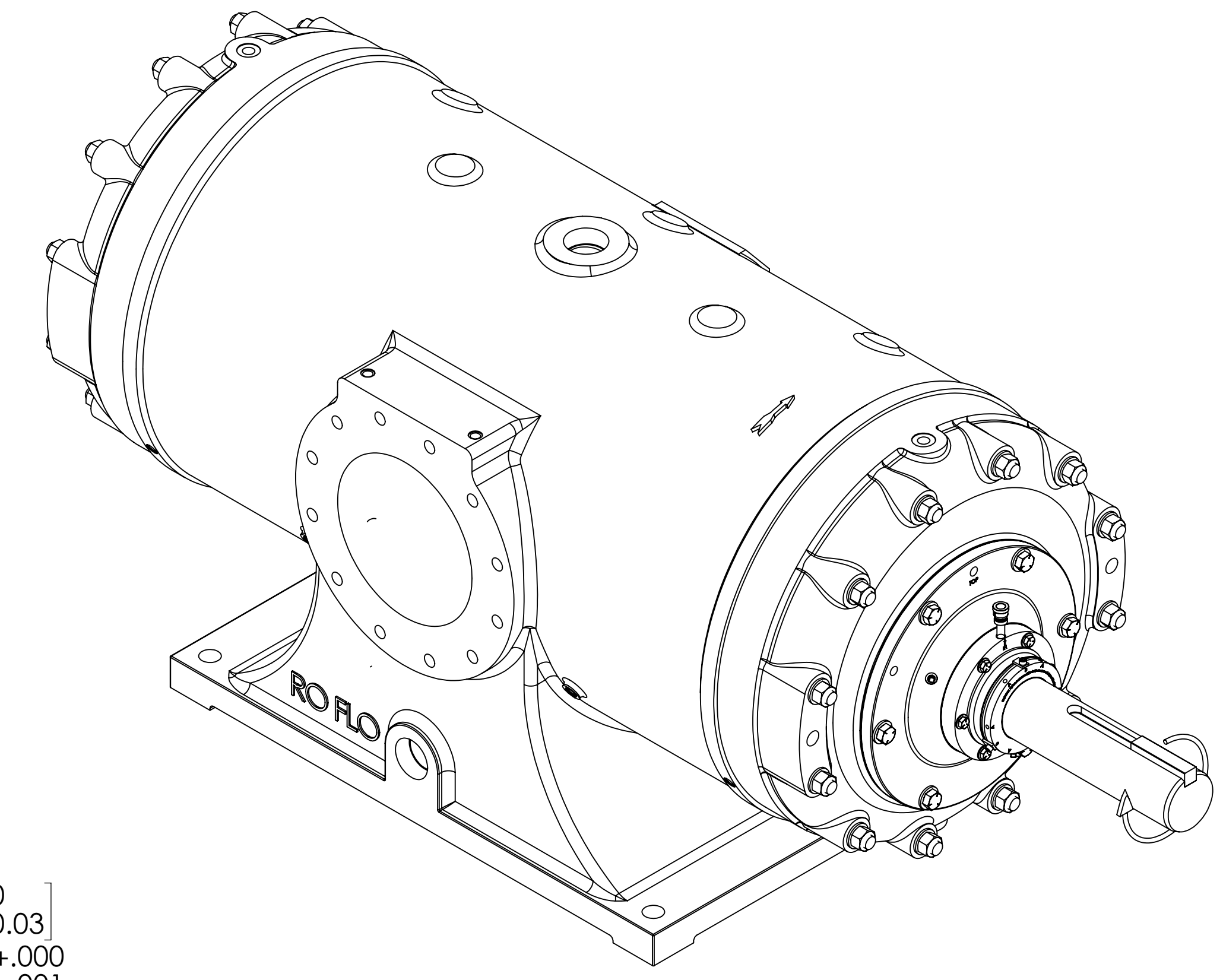
[215.90]  
8.50 CLEARANCE REQUIRED  
TO REMOVE CYLINDER HEAD  
AND SEAL ADAPTER

[76.38<sup>0</sup><sub>-0.38</sub>]  
3.007<sup>+0.000</sup>  
-.015

[22.23<sup>+0.08</sup><sub>0</sub>]  
.875<sup>+0.003</sup>  
-.000

[88.90<sup>0</sup><sub>-0.03</sub>]  
 $\phi$  3.500<sup>+0.000</sup>  
-.001

DETAIL OF ROTOR KEYWAY



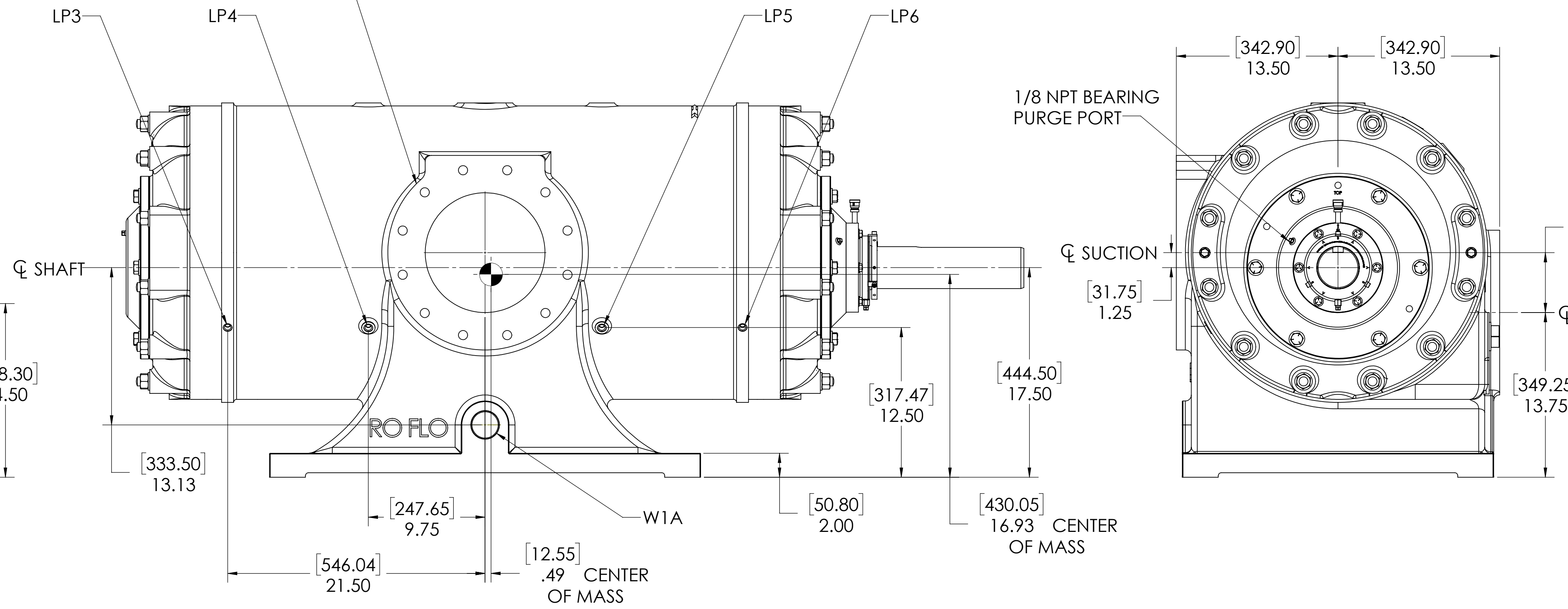
1/8 NPT BEARING PURGE PORT

[793.75]  
31.25

[76.20]  
3.00

[292.10]  
11.50

[330.20]  
13.00



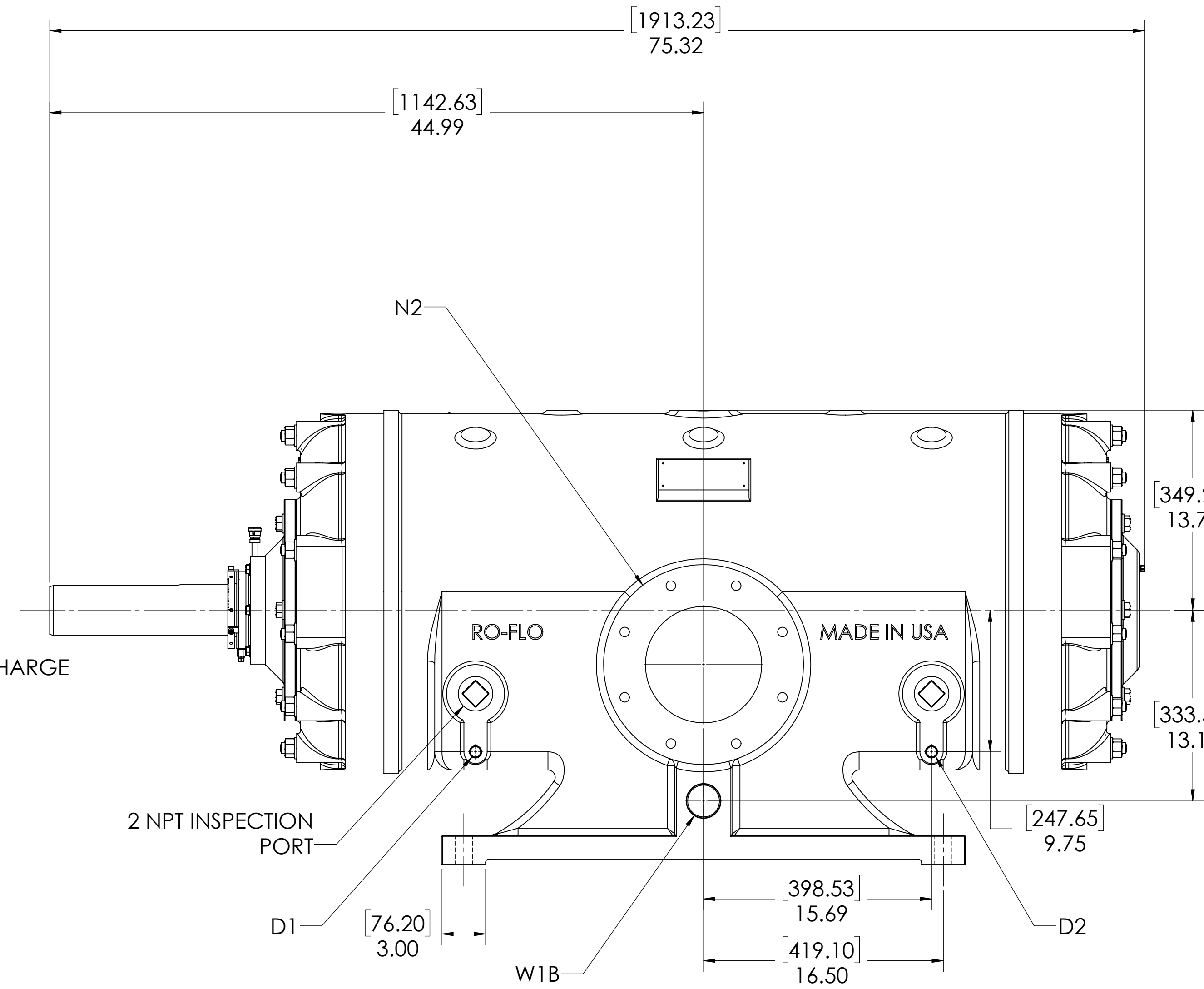
1/8 NPT BEARING PURGE PORT

$\phi$  SUCTION

[31.75]  
1.25

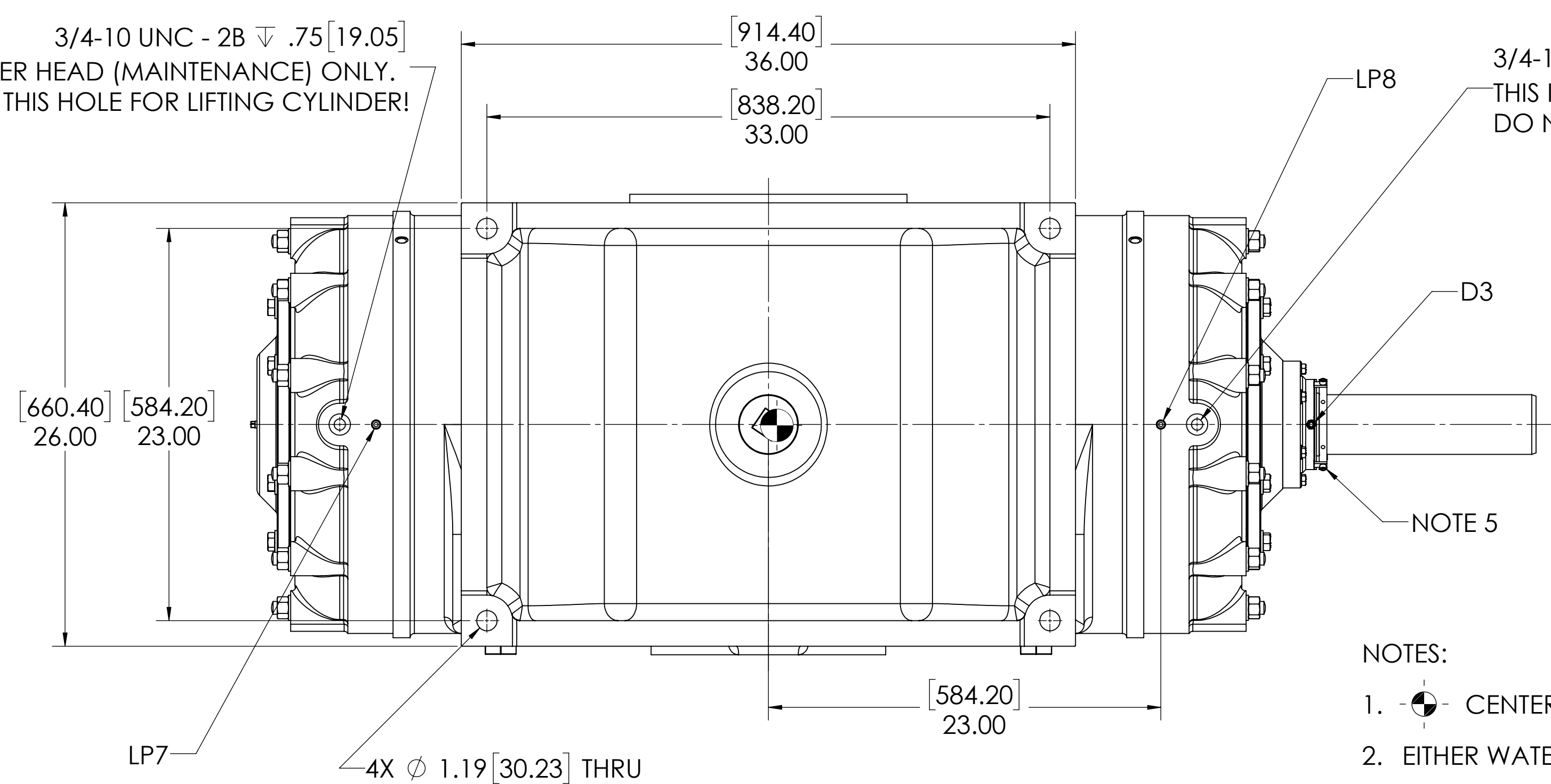
$\phi$  DISCHARGE

[127]  
5.00



3/4-10 UNC - 2B  $\nabla$  .75 [19.05]  
THIS IS A LIFTING HOLE FOR CYLINDER HEAD (MAINTENANCE) ONLY.  
DO NOT USE THIS HOLE FOR LIFTING CYLINDER!

3/4-10 UNC - 2B  $\nabla$  .75 [19.05]  
THIS IS A LIFTING HOLE FOR CYLINDER HEAD (MAINTENANCE) ONLY.  
DO NOT USE THIS HOLE FOR LIFTING CYLINDER!



NOTES:

- CENTER OF MASS DIMENSIONS ARE APPROXIMATE
- EITHER WATER INLET MAY BE USED, DEPENDING UPON SYSTEM NEEDS
- WEIGHT IS APPROXIMATE
- THIS DRAWING IS DUAL DIMENSION. DIMENSIONS ARE IN INCHES, DIMENSIONS IN [BRACKETS] ARE IN MILLIMETERS.
- REMOVE (3) RED SEAL LOCKING TABS BEFORE OPERATION. RETAIN TABS AND SCREWS FOR SERVICE (TABS MUST BE INSTALLED BEFORE SEAL REMOVAL).

FLANGE CONNECTIONS		BOLT HOLE SIZE	
N1	10" GAS SUCTION FLANGE (ANSI CLASS 150 FLAT FACE)	12 x 7/8-9 $\nabla$ 1.38	
N2	8" GAS DISCHARGE FLANGE (ANSI CLASS 150 FLAT FACE)	8 x 3/4-10 $\nabla$ 1.12	
W1A	2 NPT(F) WATER INLET (SEE NOTE 2)	N/A	
W1B	2 NPT(F) WATER INLET (SEE NOTE 2)	N/A	
W2	2 NPT(F) WATER OUTLET	N/A	
D1	1/2 NPT(F) DRAIN HOLE	N/A	
D2	1/2 NPT(F) DRAIN HOLE	N/A	
D3	1/8 NPT (F) SEAL WEEPAGE DRAIN	N/A	

LUBRICATION OIL CONNECTION		
(REFER TO MANUAL FOR FURTHER INFORMATION)		
DESCRIPTION	THREAD SIZE	QTY
LUBE QUILL (LQx)	1/4 NPT(F)	2
LUBE POINTS(LPx)	1/4 NPT(F)	8

UNLESS OTHERWISE SPECIFIED:  
DIMENSIONS ARE IN INCHES  
TOLERANCES:  
ANGULAR: MACH 3 DEG  
CHAMFER: 1:30  
HOLE: H9/D9  
PLATE: DECIMAL 1/32  
THIRD PLACE DECIMAL 1/64  
THIRD PLACE DECIMAL 1/32

DATE: 11/11/2022  
DRAWN: TRF  
CHECKED: BSS  
ENG APPR: BSS

PROPERTY AND CONSENT:  
GENERAL ARRANGEMENT,  
19S, CW, SC  
E 16-123-634-515 00

SCALE: 1:6  
SHEET: 1 OF 1