

1/2-13 UNC - 2B ∇ .75 [19.05]
THIS IS A LIFTING HOLE FOR CYLINDER HEAD (MAINTENANCE) ONLY.
DO NOT USE THIS HOLE FOR LIFTING COMPRESSOR!

1/4 NPT DISCHARGE
INSTRUMENTATION PORT

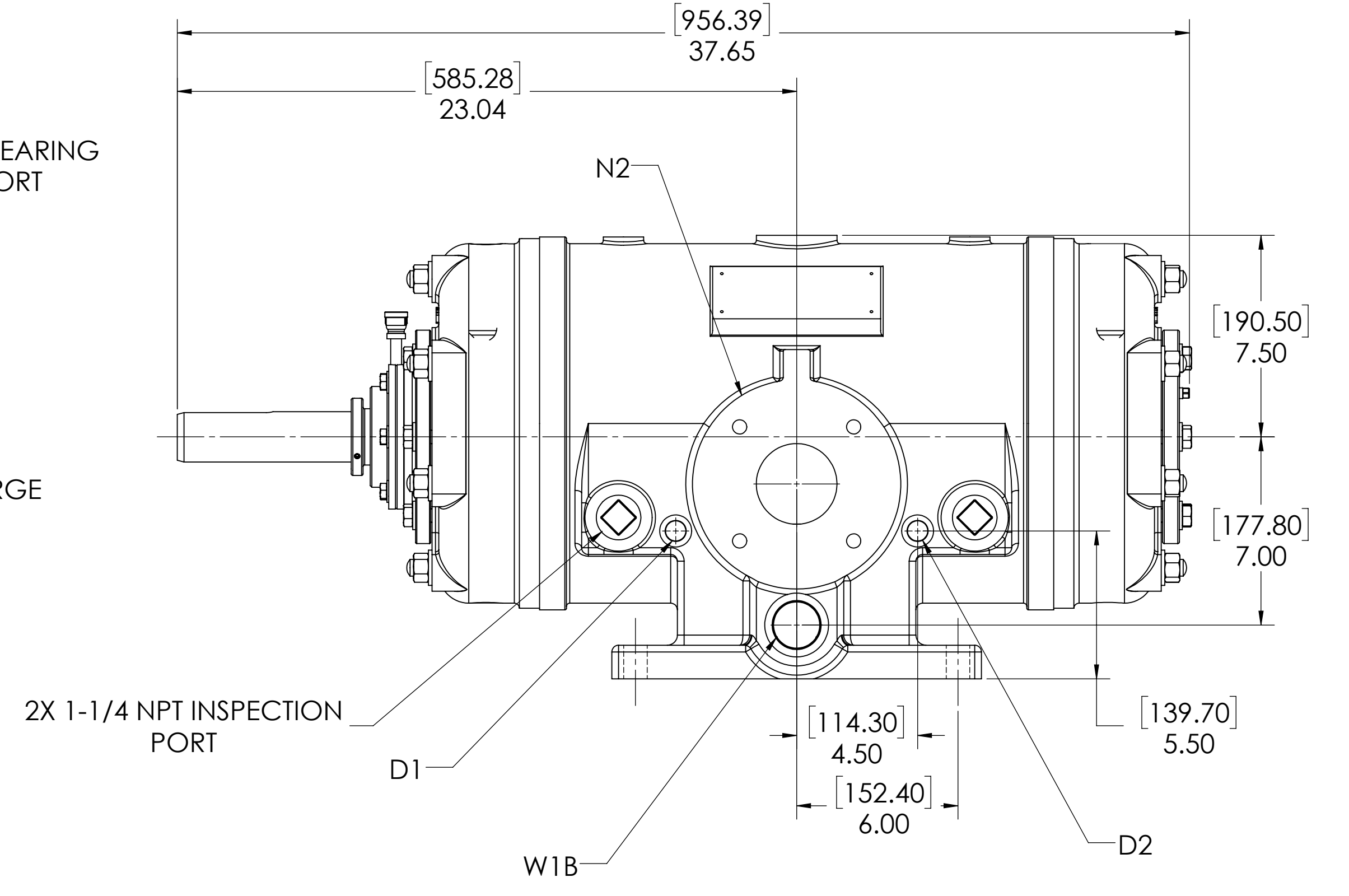
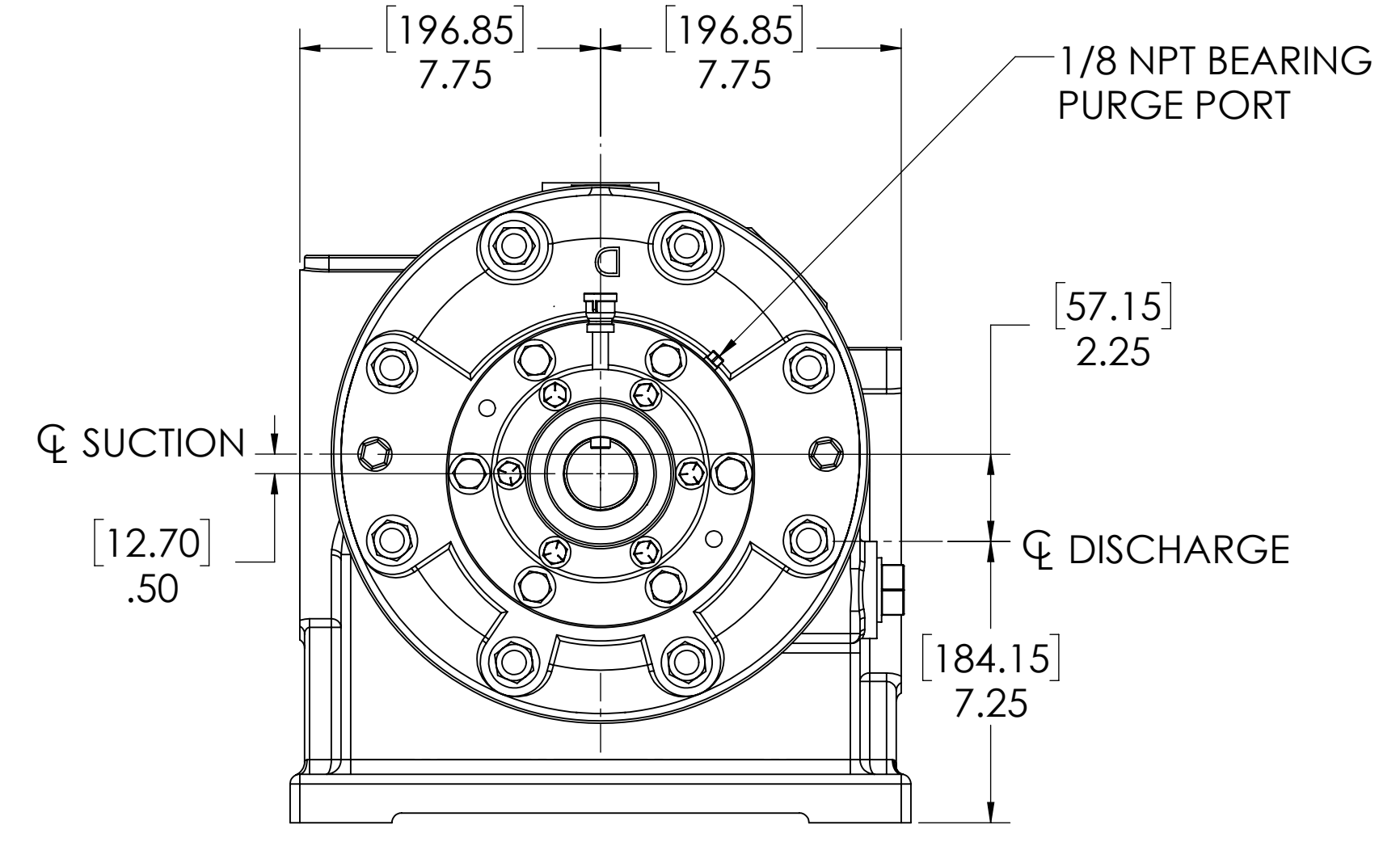
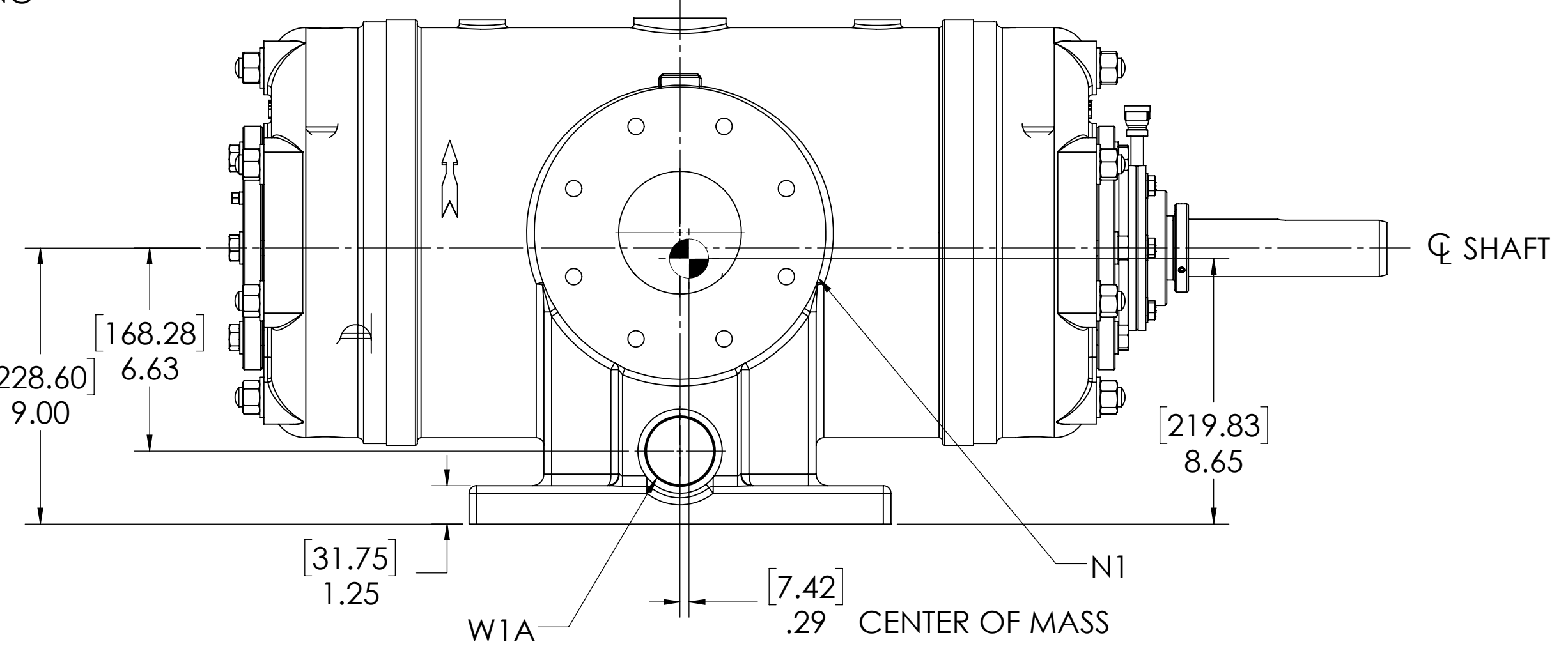
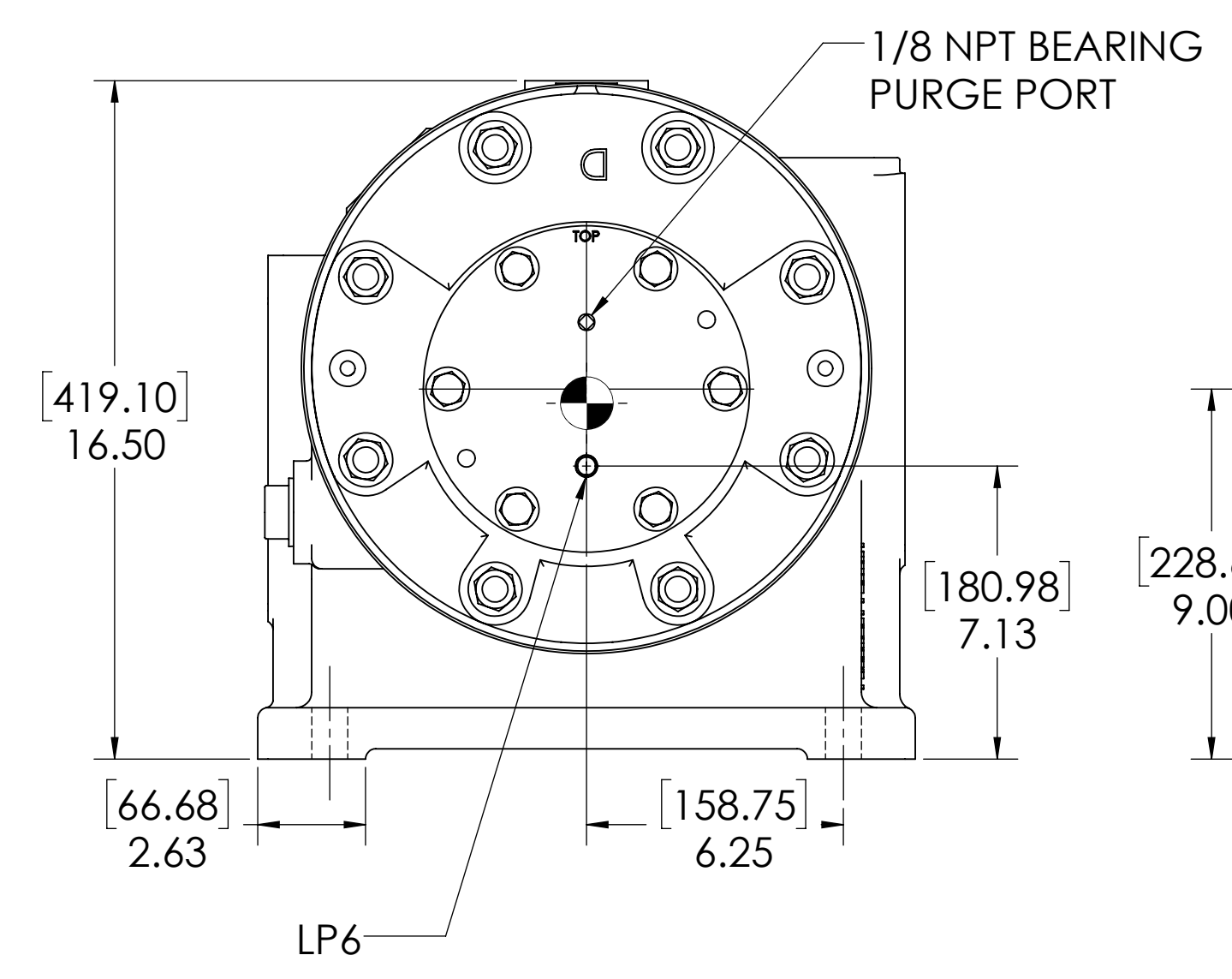
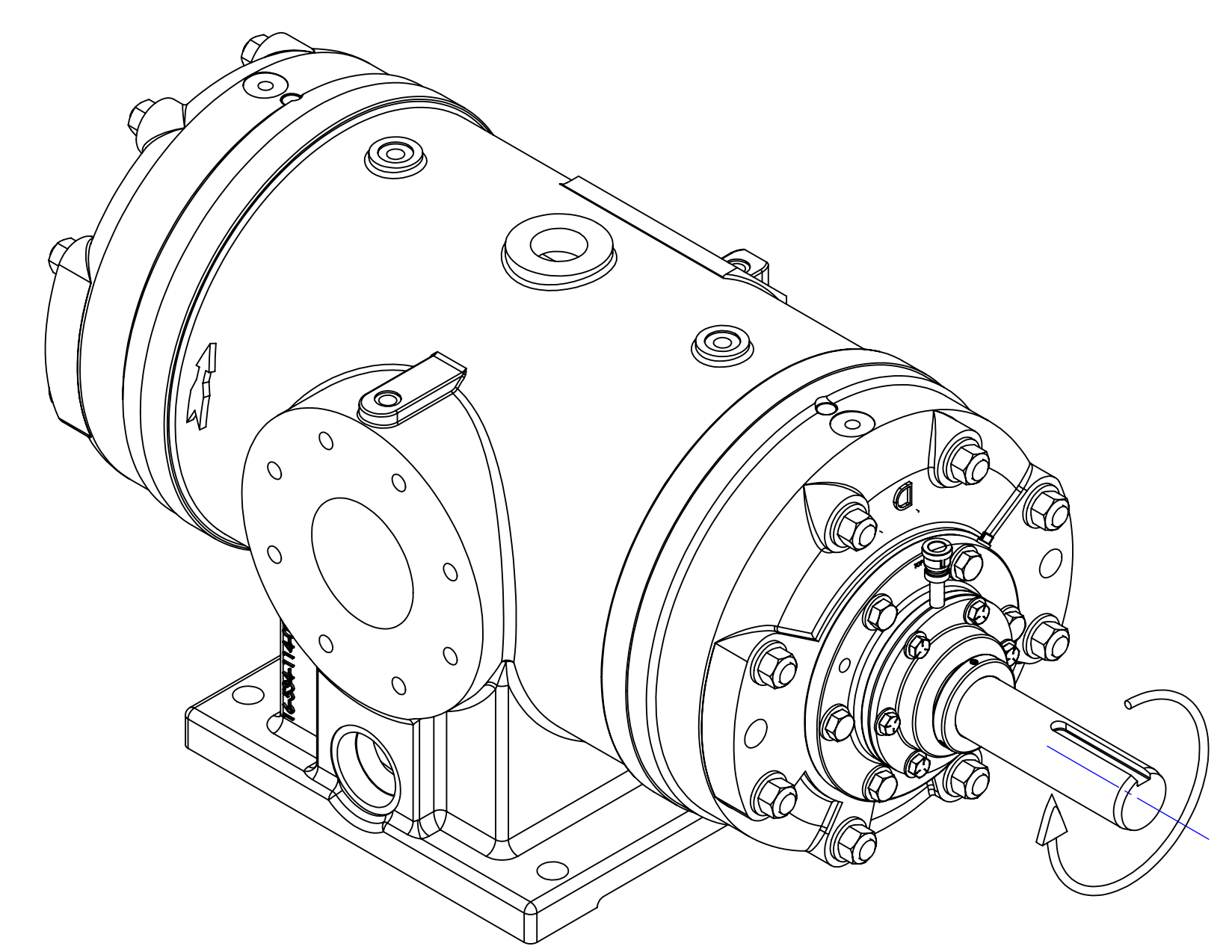
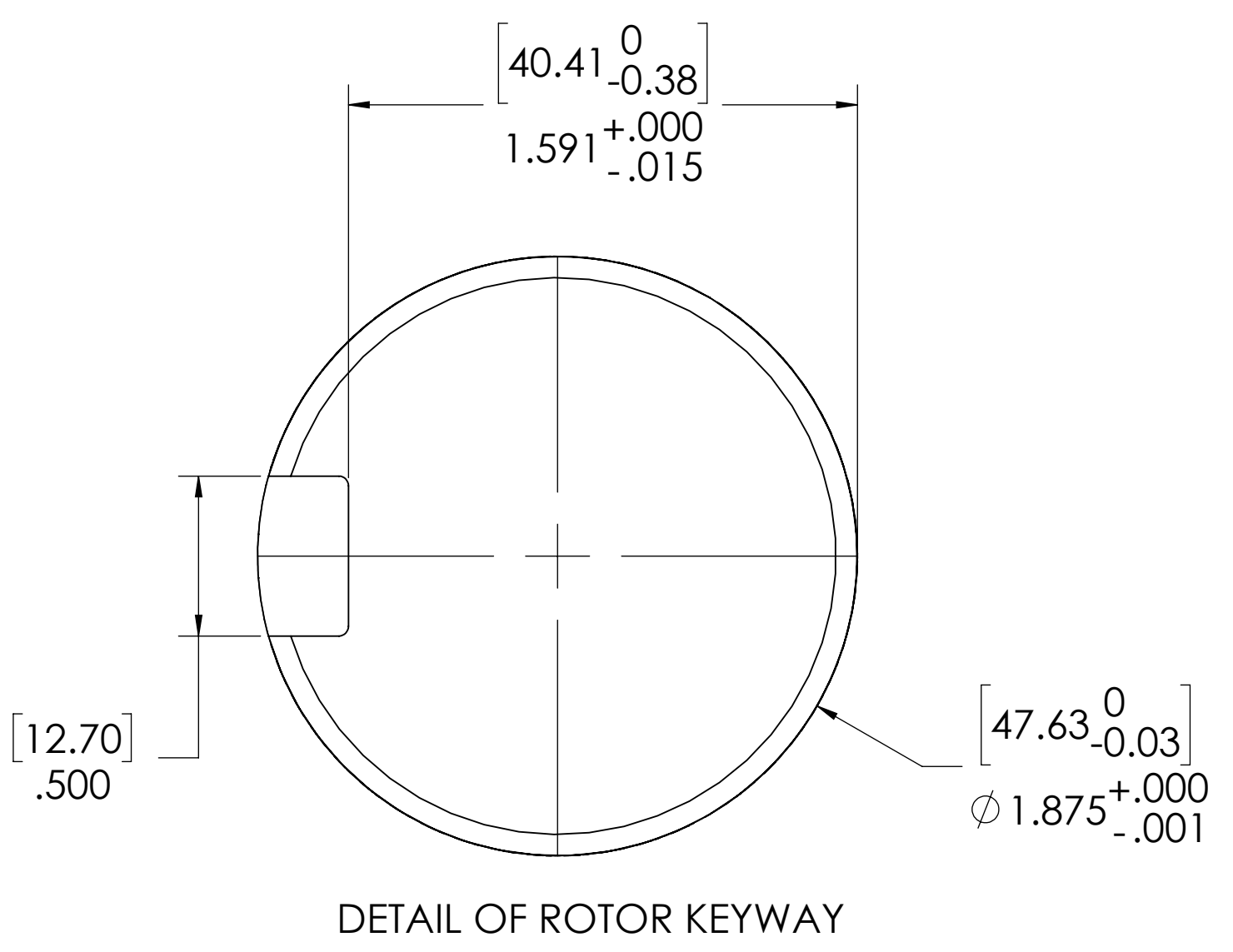
1/2-13 UNC - 2B ∇ .75 [19.05]
THIS IS A LIFTING HOLE FOR CYLINDER HEAD (MAINTENANCE) ONLY.
DO NOT USE THIS HOLE FOR LIFTING COMPRESSOR!

ϕ 1.25 [31.75] ∇ .04 FLAT MACHINED FOR
MOUNTING AN ACCELEROMETER.

[355.60]
14.00 CLEARANCE REQUIRED
TO REMOVE ROTOR BLADES

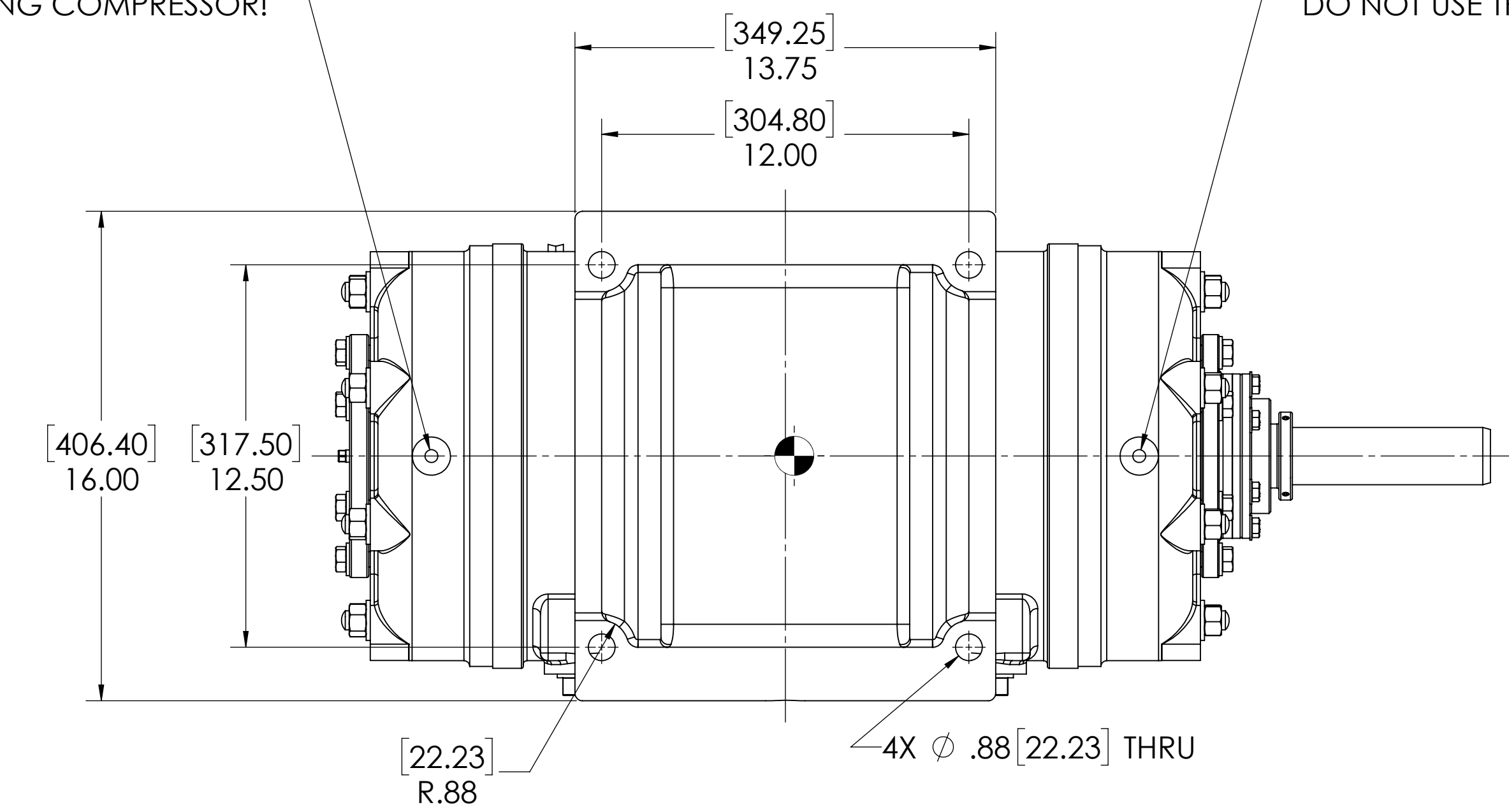
[133.35]
5.25 CLEARANCE REQUIRED TO
REMOVE CYLINDER HEAD
AND END COVER.

[133.35]
5.25 CLEARANCE REQUIRED
TO REMOVE CYLINDER HEAD AND
SEAL ADAPTER



1/2-13 UNC - 2B ∇ .75 [19.05]
THIS IS A LIFTING HOLE FOR CYLINDER HEAD (MAINTENANCE) ONLY.
DO NOT USE THIS HOLE FOR LIFTING COMPRESSOR!

1/2-13 UNC - 2B ∇ .75 [19.05]
THIS IS A LIFTING HOLE FOR CYLINDER HEAD (MAINTENANCE) ONLY.
DO NOT USE THIS HOLE FOR LIFTING COMPRESSOR!



- NOTES:
- CENTER OF MASS DIMENSIONS ARE APPROXIMATE
 - EITHER WATER INLET MAY BE USED, DEPENDING UPON SYSTEM NEEDS
 - WEIGHT IS APPROXIMATE
 - THIS DRAWING IS DUAL DIMENSION. DIMENSIONS WITHOUT BRACKETS ARE IN INCHES, DIMENSIONS IN [BRACKETS] ARE IN MILLIMETERS.

	NOZZLE CONNECTIONS	BOLT HOLE SIZE
N1	4" GAS SUCTION FLANGE (ANSI CLASS 150 FLAT FACE)	8 x 5/8-11 ∇ 1.00
N2	3" GAS DISCHARGE FLANGE (ANSI CLASS 150 FLAT FACE)	4 x 5/8-11 ∇ 1.00
W1A	2 NPT(F) WATER INLET (SEE NOTE 2)	N/A
W1B	1-1/2 NPT(F) WATER INLET (SEE NOTE 2)	N/A
W2	1-1/4 NPT(F) WATER OUTLET	N/A
D1	1/2 NPT (F) DRAIN HOLE	N/A
D2	1/2 NPT (F) DRAIN HOLE	N/A

LUBRICATION OIL CONNECTION		
(REFER TO MANUAL FOR FURTHER INFORMATION)		
DESCRIPTION	THREAD SIZE	QTY
LUBE QUILL(LQ)	1/4 NPT(F)	1
LUBE POINTS(LPx)	1/4 NPT(F)	6

UNLESS OTHERWISE SPECIFIED: DIMENSIONS ARE IN INCHES TOLERANCES: ANGULAR: MACH 1 DEG; ONE PLACE DECIMAL; 1.5MM TWO PLACE DECIMAL; 1.5MM THREE PLACE DECIMAL; 1.5MM; ISO UNLESS OTHERWISE SPECIFIED.

PROPERTY AND CONFIDENTIAL

Ro-Flo Compressors, LLC
GENERAL ARRANGEMENT, SDBD, CW, SF

DATE: 9/11/2017
DRAWN: SBF
CHECKED: ISS
ENG APPR: BSS

SIZE: PART NO. 16-123-634-120
SCALE: 1:4
SHEET: 1 OF 1