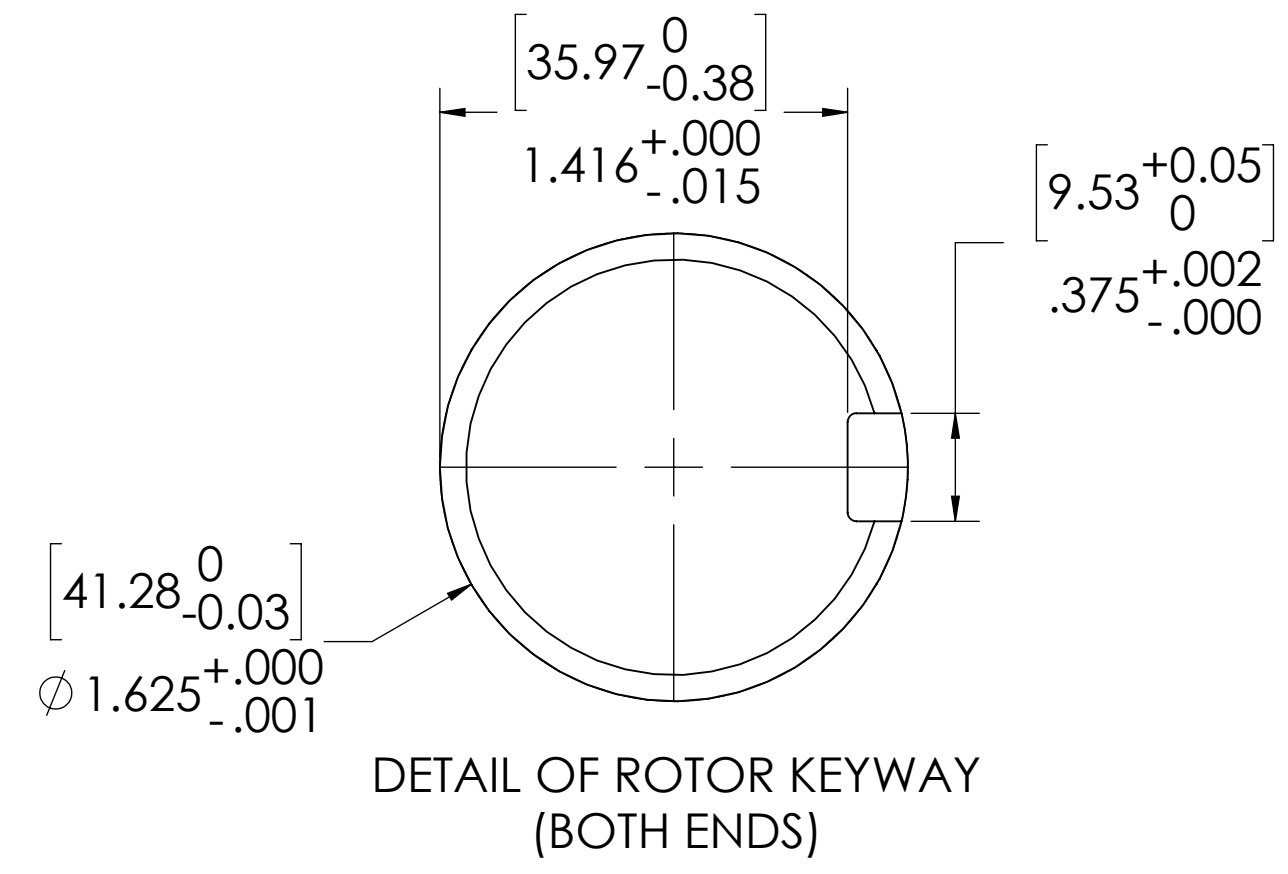


1/2-13 UNC - 2B ∇ .67 [17.02]
THIS IS A LIFTING HOLE FOR CYLINDER HEAD (MAINTENANCE) ONLY.
DO NOT USE THIS HOLE FOR LIFTING CYLINDER!

1/2-13 UNC - 2B ∇ .67 [17.02]
THIS IS A LIFTING HOLE FOR CYLINDER HEAD (MAINTENANCE) ONLY.
DO NOT USE THIS HOLE FOR LIFTING CYLINDER!

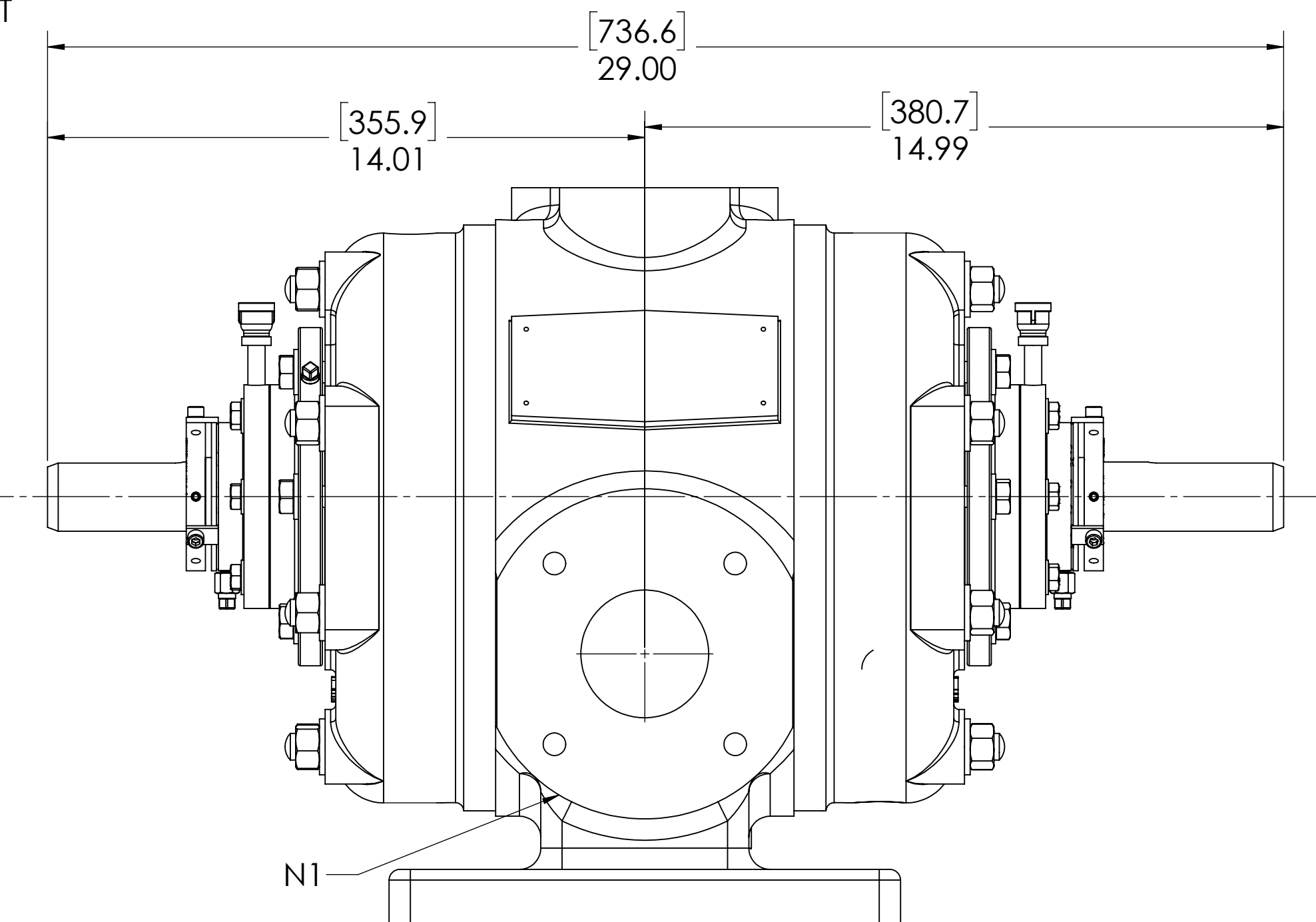
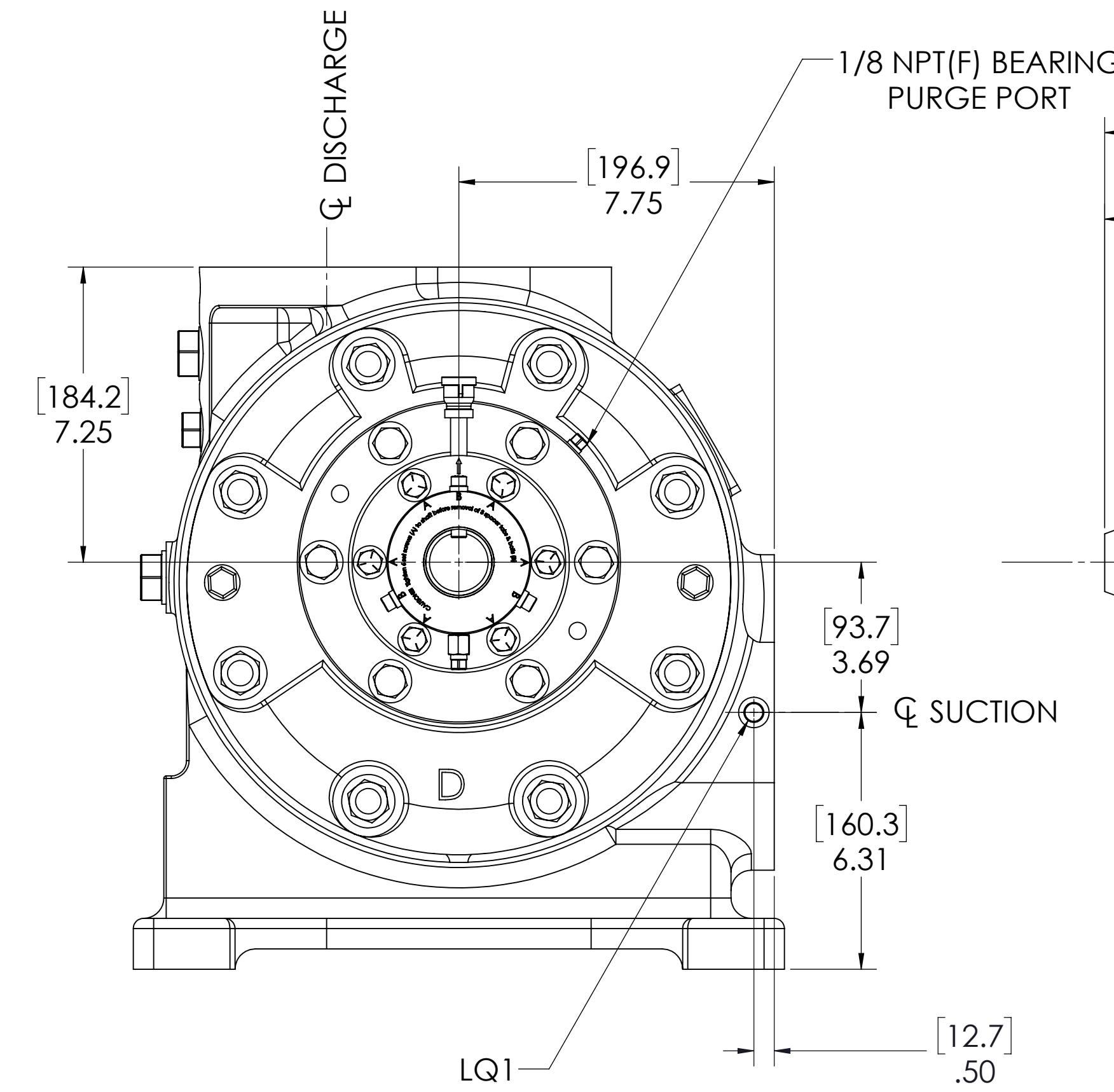
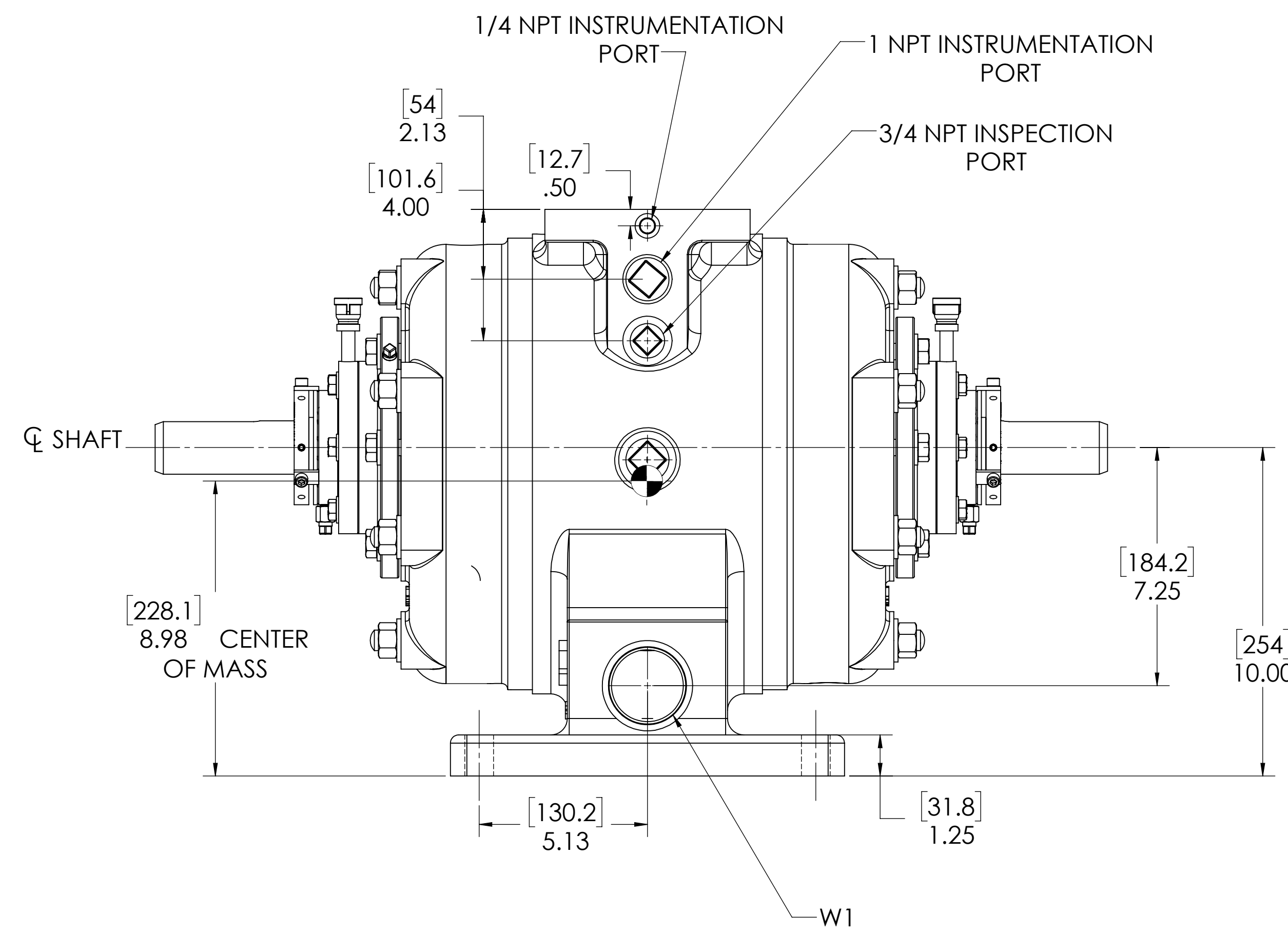
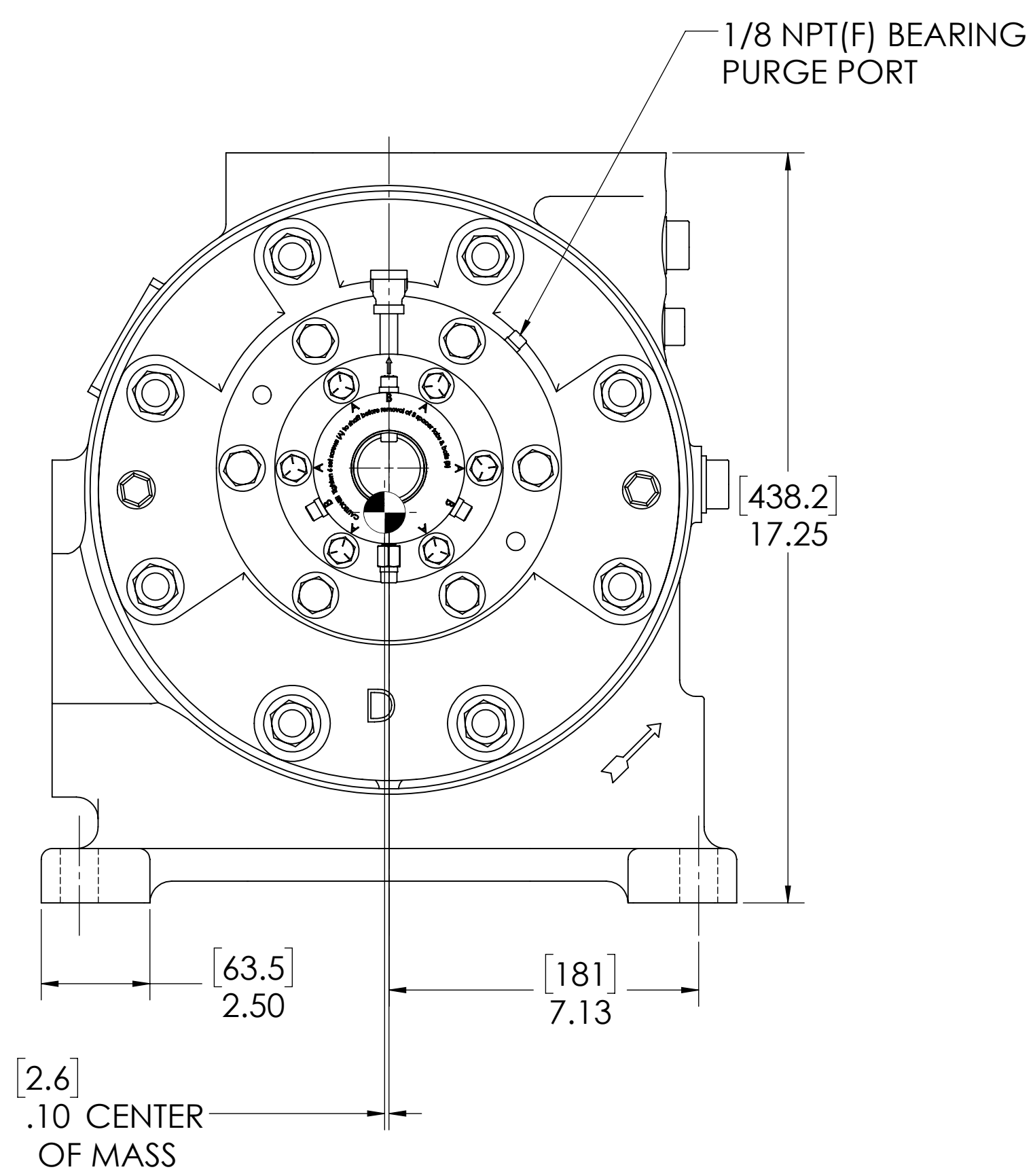
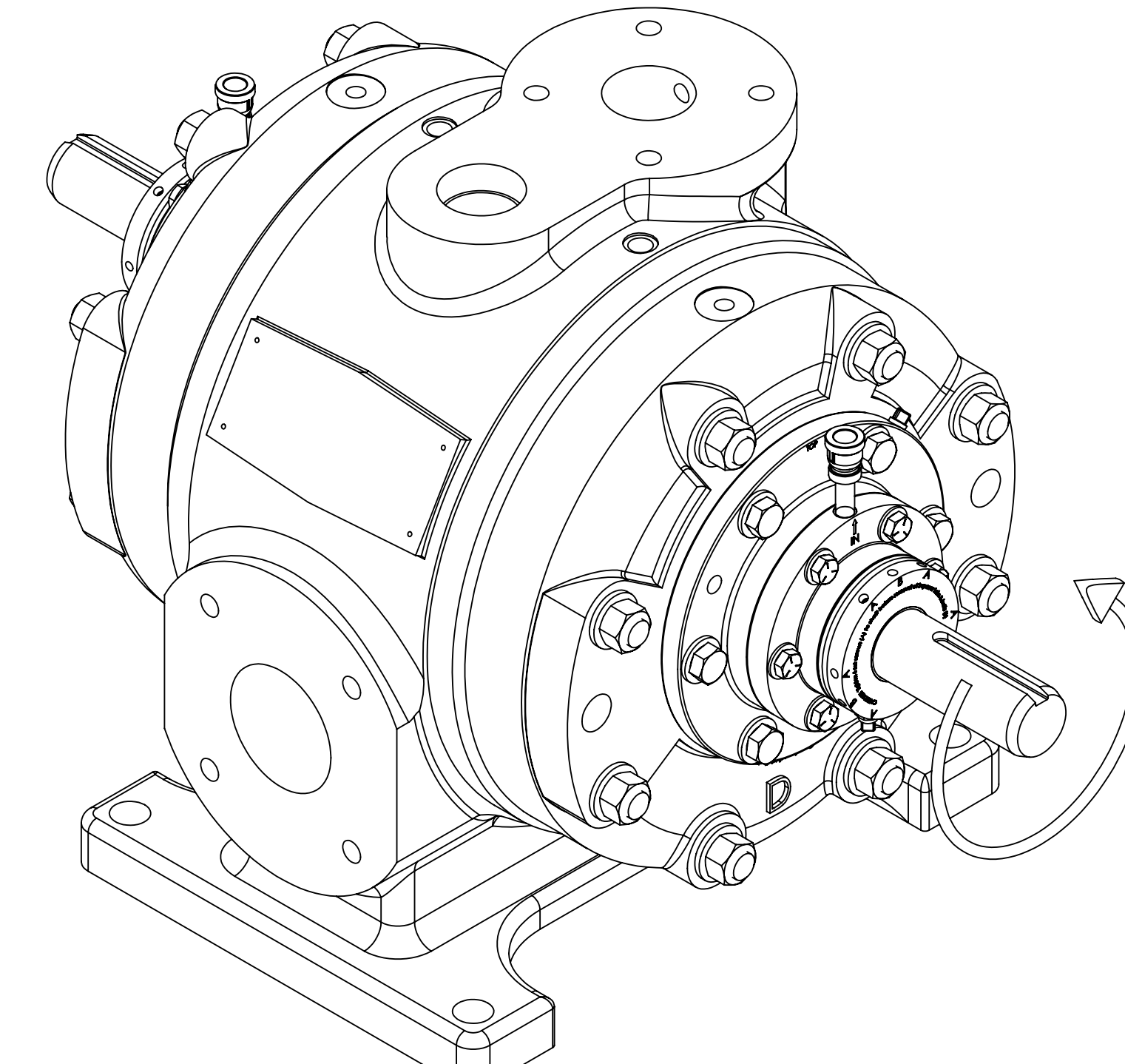
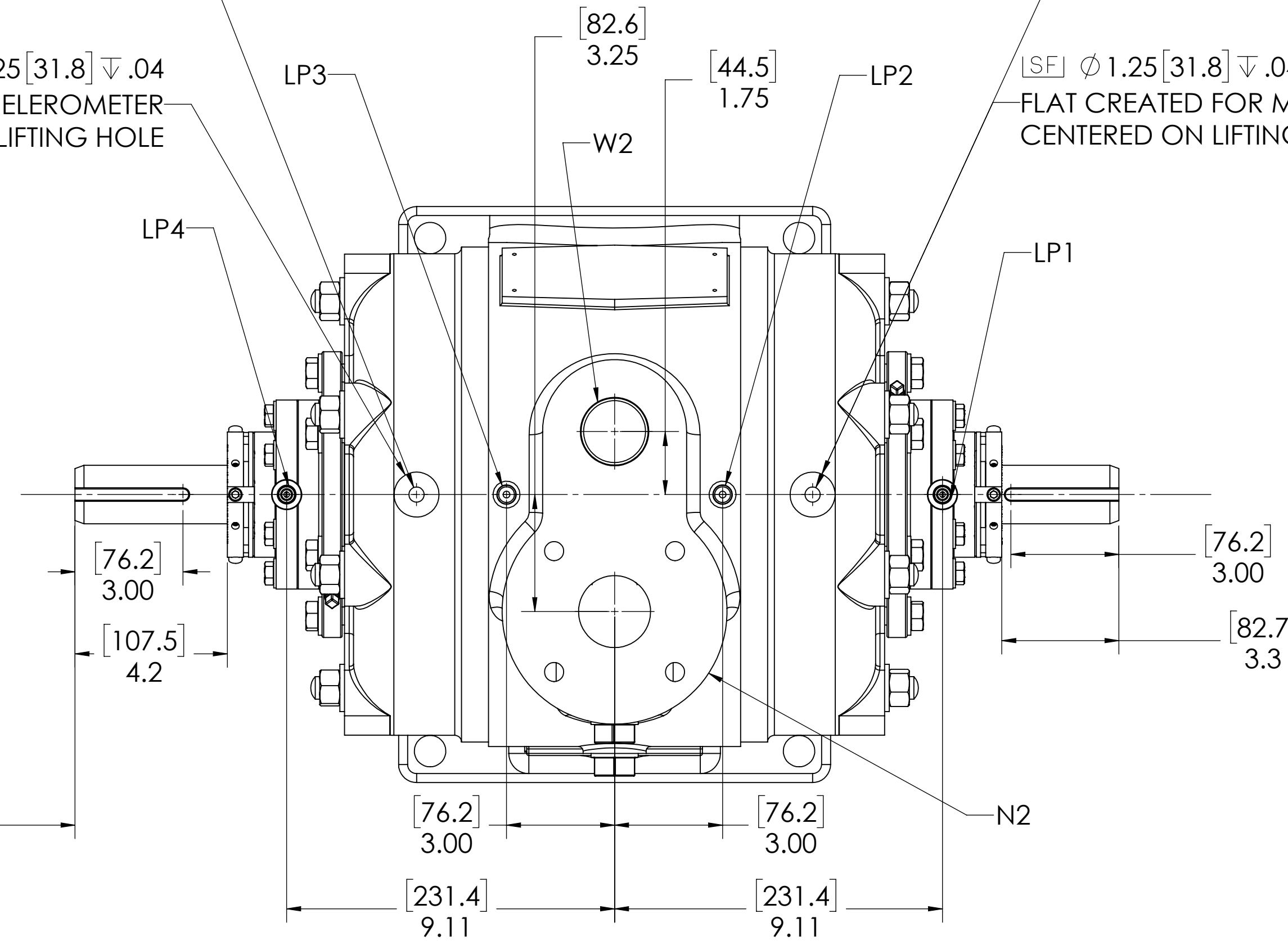
[SF] ϕ 1.25 [31.8] ∇ .04
FLAT CREATED FOR MOUNTING ACCELEROMETER
CENTERED ON LIFTING HOLE

[SF] ϕ 1.25 [31.8] ∇ .04
FLAT CREATED FOR MOUNTING ACCELEROMETER
CENTERED ON LIFTING HOLE



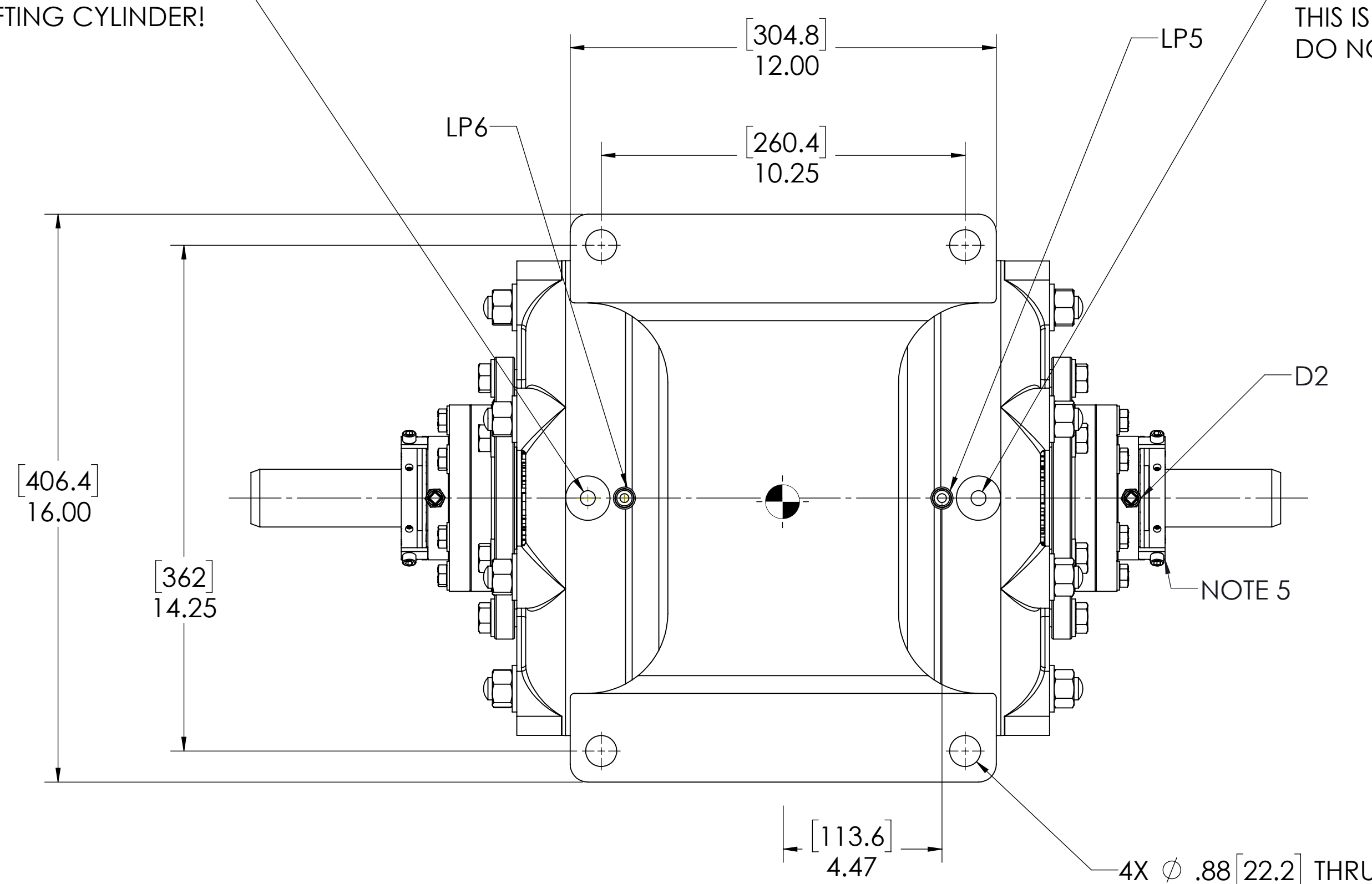
DETAIL OF ROTOR KEYWAY
(BOTH ENDS)

[141.2]
5.56 CLEARANCE REQUIRED
TO REMOVE CYLINDER HEAD
WITH SEAL ADAPTER AND
ROTOR BLADES (BOTH ENDS)



1/2-13 UNC - 2B ∇ .67 [17.02]
THIS IS A LIFTING HOLE FOR CYLINDER HEAD (MAINTENANCE) ONLY.
DO NOT USE THIS HOLE FOR LIFTING CYLINDER!

1/2-13 UNC - 2B ∇ .67 [17.02]
THIS IS A LIFTING HOLE FOR CYLINDER HEAD (MAINTENANCE) ONLY.
DO NOT USE THIS HOLE FOR LIFTING CYLINDER!



NOTES:

- CENTER OF MASS DIMENSIONS ARE APPROXIMATE
- EITHER WATER INLET MAY BE USED, DEPENDING UPON SYSTEM NEEDS
- WEIGHT IS APPROXIMATE
- THIS DRAWING IS DUAL DIMENSION. DIMENSIONS WITHOUT BRACKETS ARE IN INCHES, DIMENSIONS IN [BRACKETS] ARE IN MILLIMETERS.
- REMOVE (3) RED SEAL LOCKING TABS BEFORE OPERATION. RETAIN TABS AND SCREWS FOR SERVICE (TABS MUST BE INSTALLED BEFORE SEAL REMOVAL).

LUBRICATION OIL CONNECTION
(REFER TO MANUAL FOR FURTHER INFORMATION)

DESCRIPTION	THREAD SIZE	QTY
LUBE QUILL (LQx)	1/4 NPT(F)	1
LUBE POINTS (LPx)	1/4 NPT(F)	6

	NOZZLE CONNECTIONS	BOLT HOLE SIZE
N1	3" GAS SUCTION FLANGE (ANSI CLASS 150 FLAT FACE)	4 x 5/8-11 ∇ 1.00
N2	2" GAS DISCHARGE FLANGE (ANSI CLASS 150 FLAT FACE)	4 x 5/8-11 ∇ 1.00
W1	2 NPT(F) WATER INLET	N/A
W2	1-1/2 NPT(F) WATER OUTLET	N/A
D1	1" NPT (F) DRAIN PORT	N/A
D2	1/8 NPT (F) SEAL WEEPAGE DRAIN	N/A
D3	1/8 NPT (F) SEAL WEEPAGE DRAIN	N/A