

1/2-13 UNC - 2B  $\nabla$  .67 [17]  
THIS IS A LIFTING HOLE FOR CYLINDER HEAD (MAINTENANCE) ONLY.  
DO NOT USE THIS HOLE FOR LIFTING COMPRESSOR!

$\varnothing$  1.25 [31.8]  $\nabla$  .04 FLAT MACHINED FOR  
MOUNTING AN ACCELEROMETER.

1/4 NPT DISCHARGE  
INSTRUMENTATION PORT

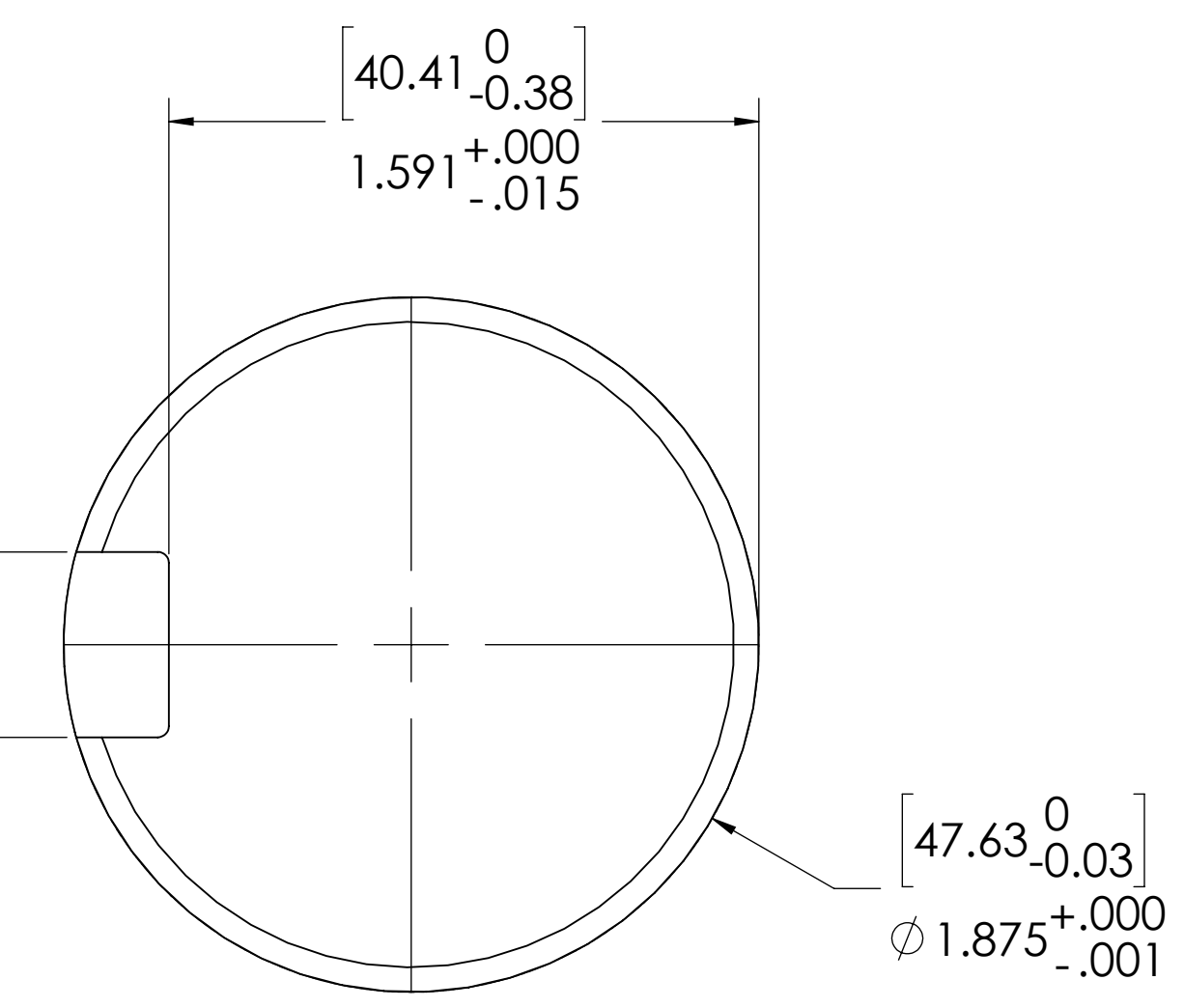
1/2-13 UNC - 2B  $\nabla$  .67 [17]  
THIS IS A LIFTING HOLE FOR CYLINDER HEAD (MAINTENANCE) ONLY.  
DO NOT USE THIS HOLE FOR LIFTING COMPRESSOR!

$\varnothing$  1.25 [31.8]  $\nabla$  .04 FLAT MACHINED FOR  
MOUNTING AN ACCELEROMETER.

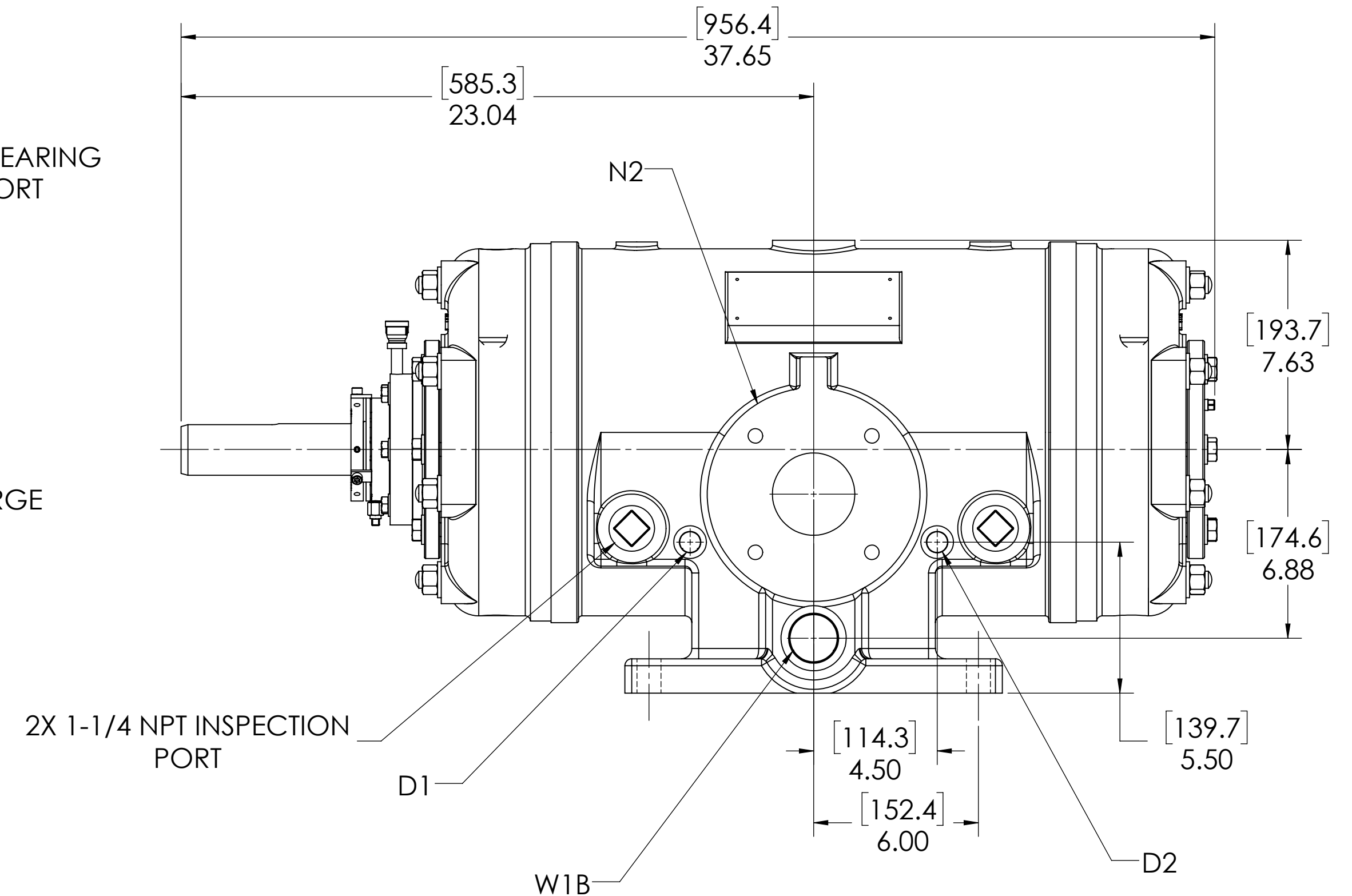
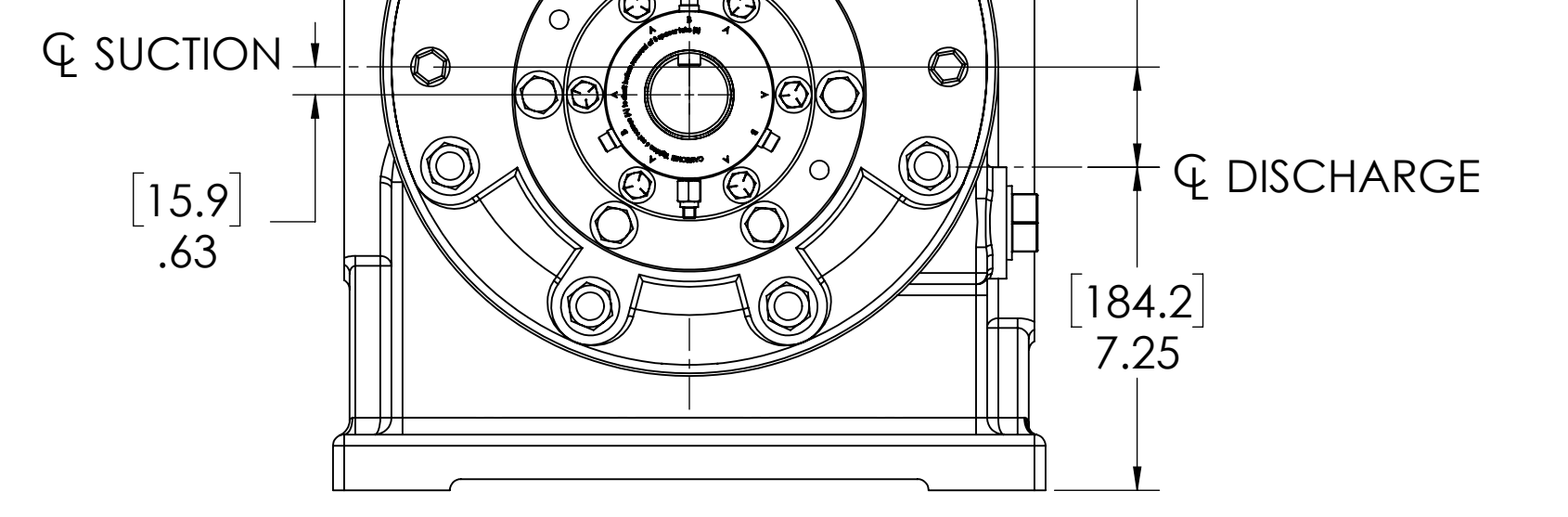
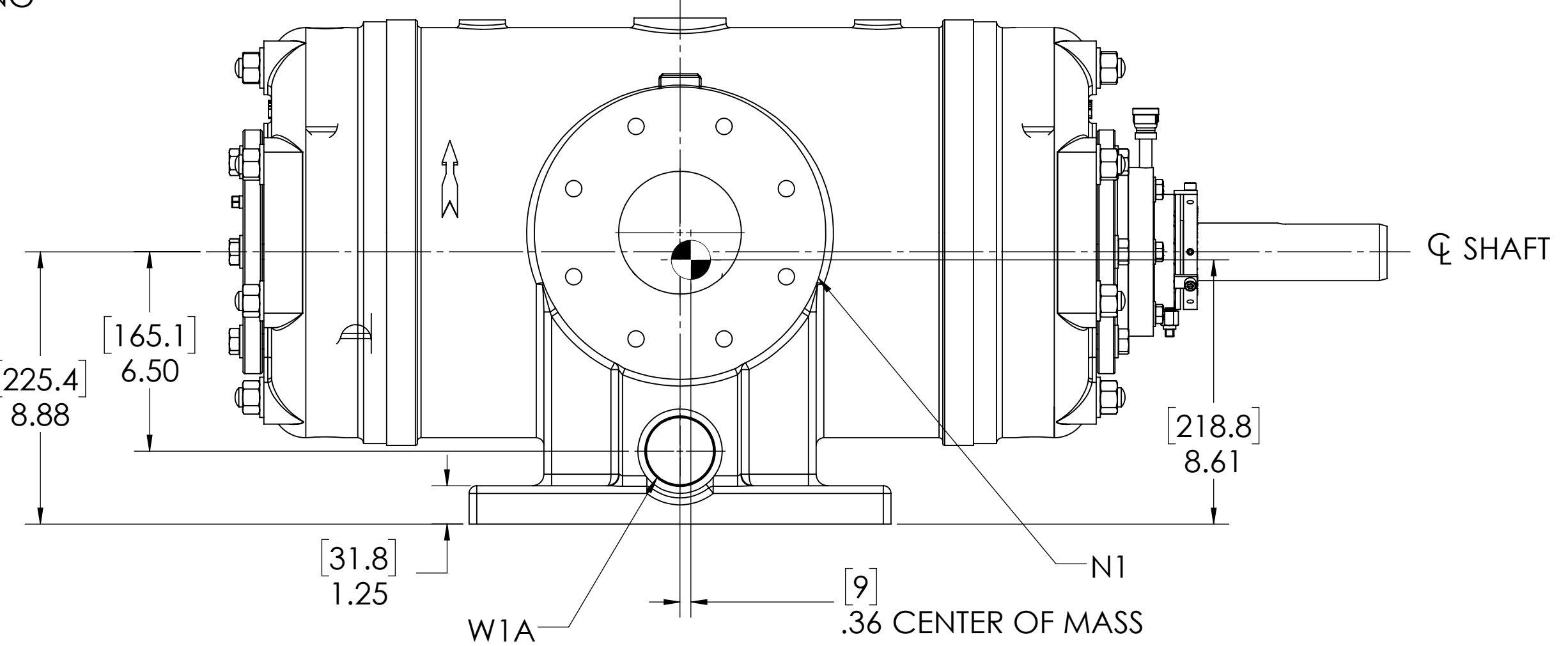
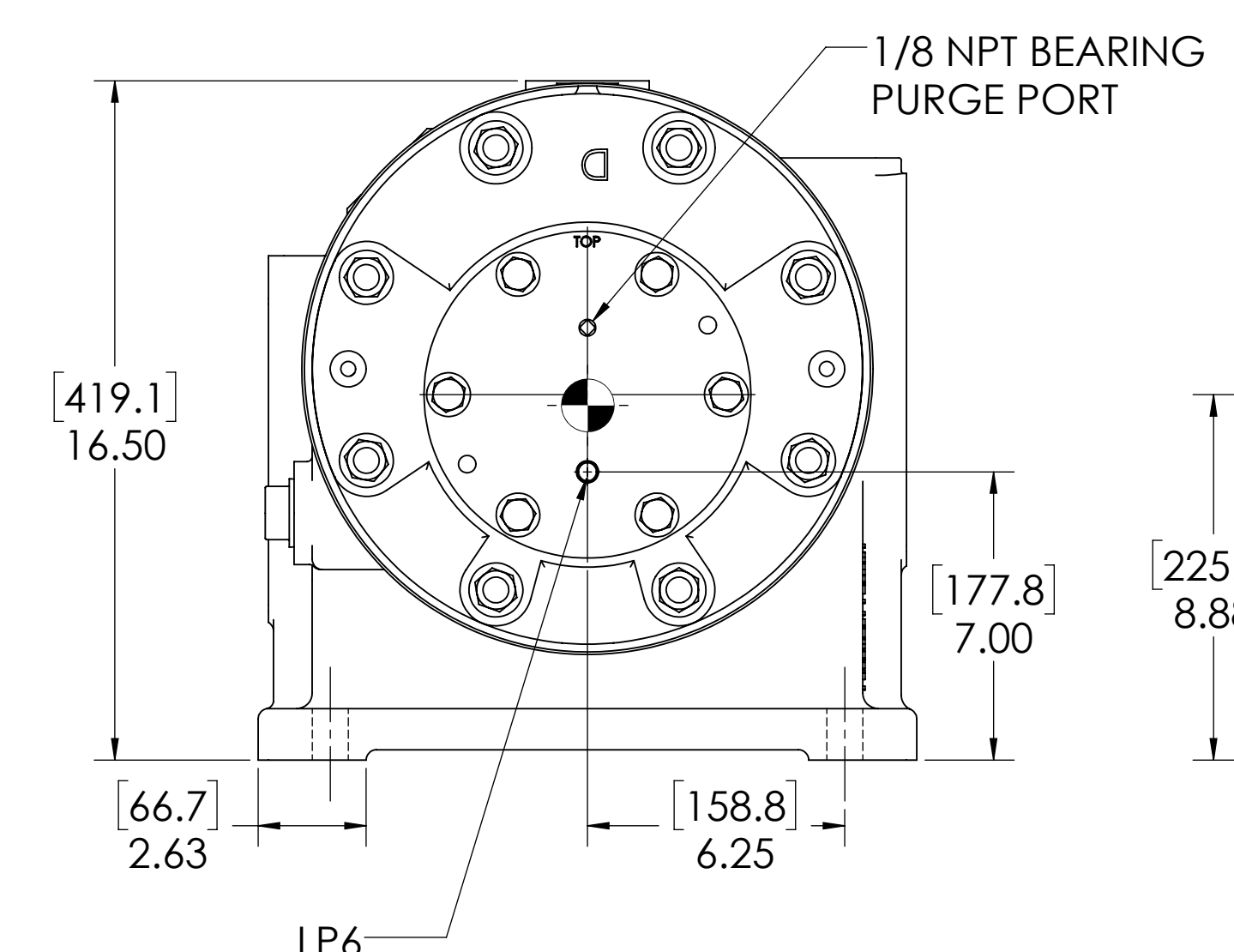
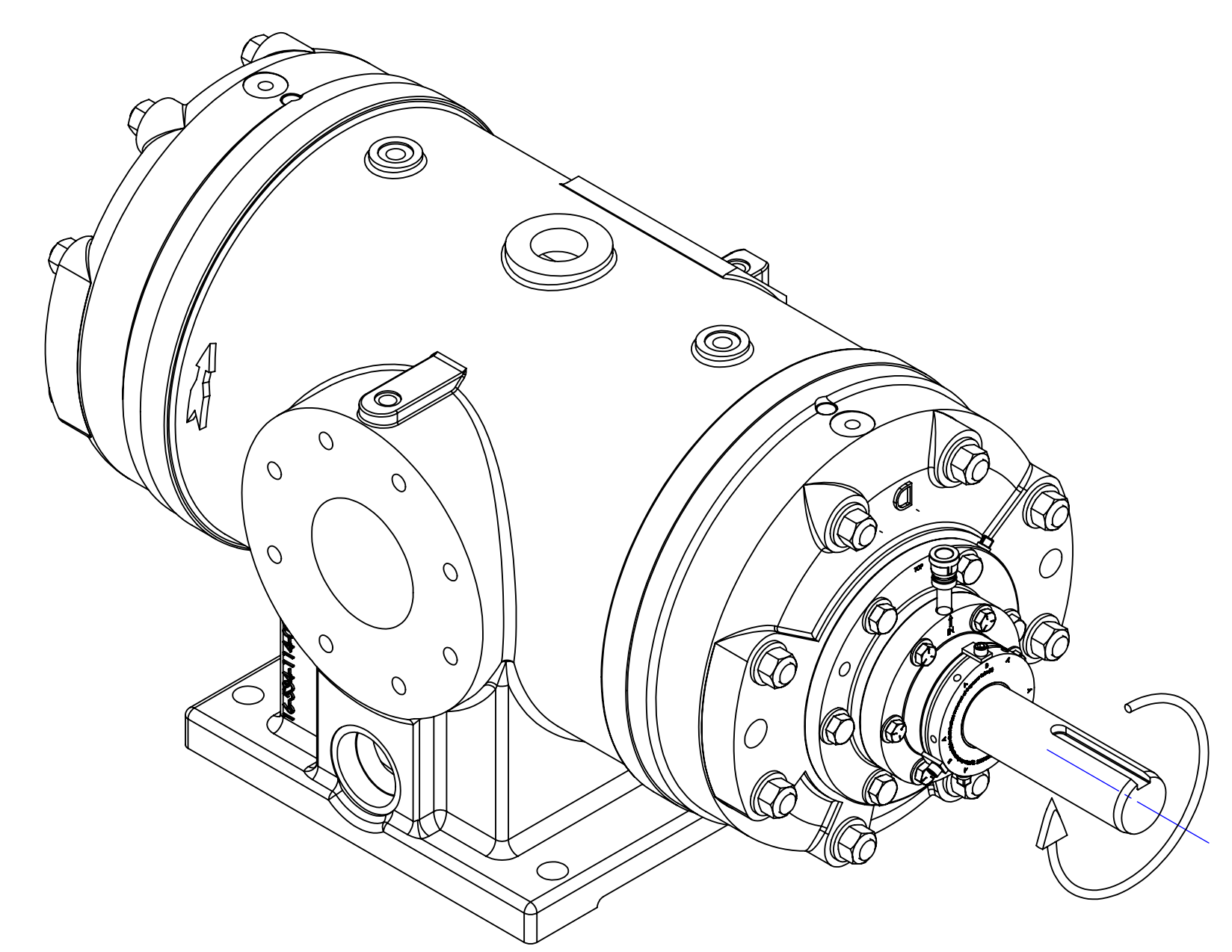
[355.6]  
14.00 CLEARANCE REQUIRED  
TO REMOVE ROTOR BLADES

[133.4]  
5.25 CLEARANCE REQUIRED  
TO REMOVE CYLINDER HEAD  
AND END COVER

[133.4]  
5.25 CLEARANCE REQUIRED  
TO REMOVE CYLINDER HEAD AND  
SEAL ADAPTER

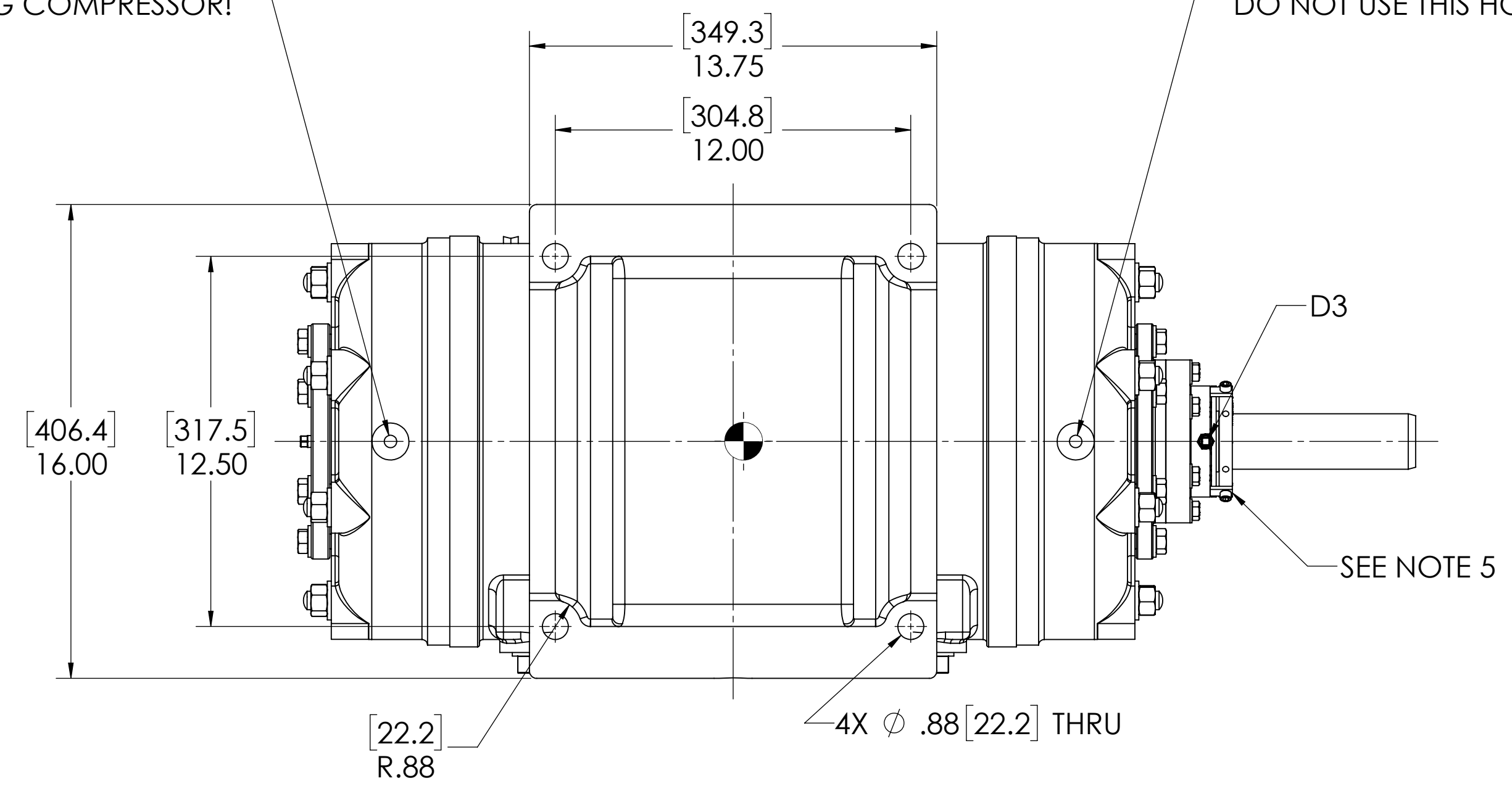


DETAIL OF ROTOR KEYWAY



1/2-13 UNC - 2B  $\nabla$  .67 [17]  
THIS IS A LIFTING HOLE FOR CYLINDER HEAD (MAINTENANCE) ONLY.  
DO NOT USE THIS HOLE FOR LIFTING COMPRESSOR!

1/2-13 UNC - 2B  $\nabla$  .67 [17]  
THIS IS A LIFTING HOLE FOR CYLINDER HEAD (MAINTENANCE) ONLY.  
DO NOT USE THIS HOLE FOR LIFTING COMPRESSOR!



NOTES:

1.  $\bullet$  CENTER OF MASS DIMENSIONS ARE APPROXIMATE
2. EITHER WATER INLET MAY BE USED, DEPENDING UPON SYSTEM NEEDS
3. WEIGHT IS APPROXIMATE
4. THIS DRAWING IS DUAL DIMENSION. DIMENSIONS WITHOUT BRACKETS ARE IN INCHES, DIMENSIONS IN [BRACKETS] ARE IN MILLIMETERS.
5. REMOVE (3) RED SEAL LOCKING TABS BEFORE OPERATION. RETAIN TABS AND SCREWS FOR SERVICE (TABS MUST BE INSTALLED BEFORE SEAL REMOVAL).

NOZZLE CONNECTIONS		BOLT HOLE SIZE
N1	4" GAS SUCTION FLANGE (ANSI CLASS 150 FLAT FACE)	8 x 5/8-11 $\nabla$ 1.00
N2	3" GAS DISCHARGE FLANGE (ANSI CLASS 150 FLAT FACE)	4 x 5/8-11 $\nabla$ 1.00
W1A	2 NPT(F) WATER INLET (SEE NOTE 2)	N/A
W1B	1-1/2 NPT(F) WATER INLET (SEE NOTE 2)	N/A
W2	1-1/4 NPT(F) WATER OUTLET	N/A
D1	1/2 NPT (F) DRAIN HOLE	N/A
D2	1/2 NPT (F) DRAIN HOLE	N/A
D3	1/8 NPT (F) SEAL WEEPAGE DRAIN	N/A

LUBRICATION OIL CONNECTION		
(REFER TO MANUAL FOR FURTHER INFORMATION)		
DESCRIPTION	THREAD SIZE	QTY
LUBE QUILL(LQ)	1/4 NPT(F)	1
LUBE POINTS(LPx)	1/4 NPT(F)	6

UNLESS OTHERWISE SPECIFIED: DIMENSIONS ARE IN INCHES TOLERANCES: ANGULAR MATCH-5 DEG ONE PLACE DECIMAL +.000 THREE PLACE DECIMAL -0.001 FIVE PLACE DECIMAL -0.0005 SURFACE FINISH: UNLESS OTHERWISE SPECIFIED: SEE DRAWING FOR ALL SURFACES. MATERIALS: UNLESS OTHERWISE SPECIFIED: SEE DRAWING FOR ALL MATERIALS. WEIGHT: UNLESS OTHERWISE SPECIFIED: SEE DRAWING FOR ALL WEIGHTS. PROPERTIES: UNLESS OTHERWISE SPECIFIED: SEE DRAWING FOR ALL PROPERTIES. GENERAL ARRANGEMENT, SDBDE, CW, SC. Ro-Flo COMPRESSORS. 16-123-634-507 00. 1:4 780 LBS 1 OF 1.