

1/2-13 UNC - 2B  $\nabla$  .62 [15.7]  
THIS IS A LIFTING HOLE FOR CYLINDER HEAD (MAINTENANCE) ONLY.  
DO NOT USE THIS HOLE FOR LIFTING COMPRESSOR!

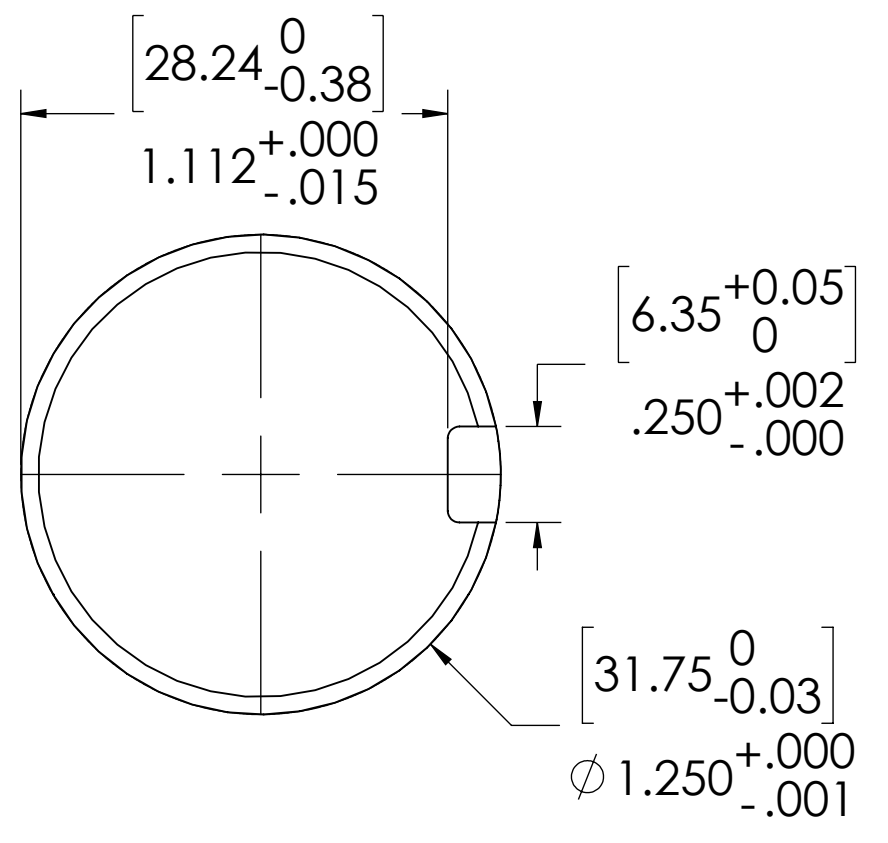
$\square$   $\phi$  1.25 [31.8]  $\nabla$  .01  
FLAT CREATED TO MOUNT ACCELEROMETER.  
FLAT IS CENTERED ON LIFTING HOLE.

1/2-13 UNC - 2B  $\nabla$  .62 [15.7]  
THIS IS A LIFTING HOLE FOR CYLINDER HEAD (MAINTENANCE) ONLY.  
DO NOT USE THIS HOLE FOR LIFTING COMPRESSOR!

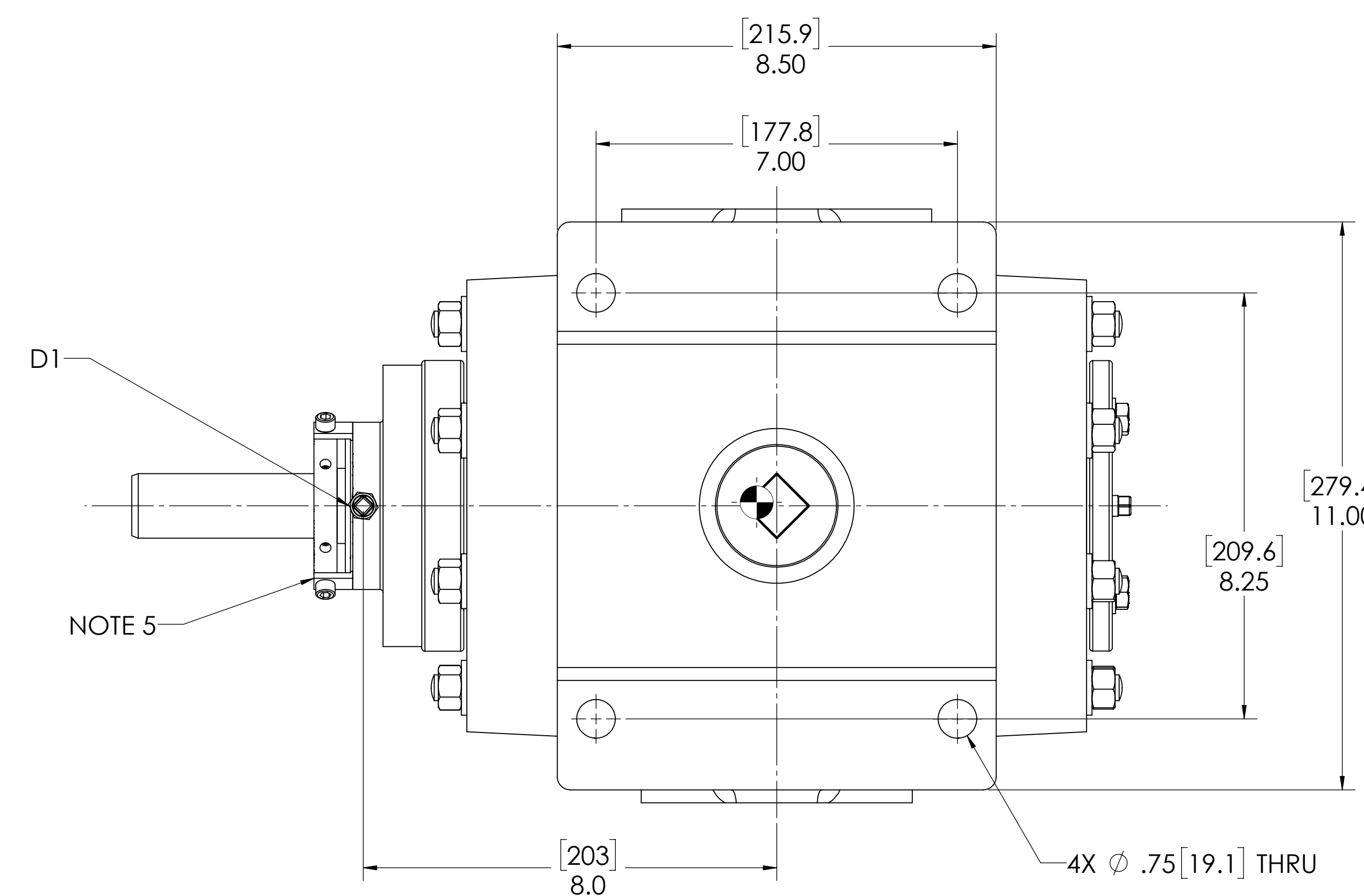
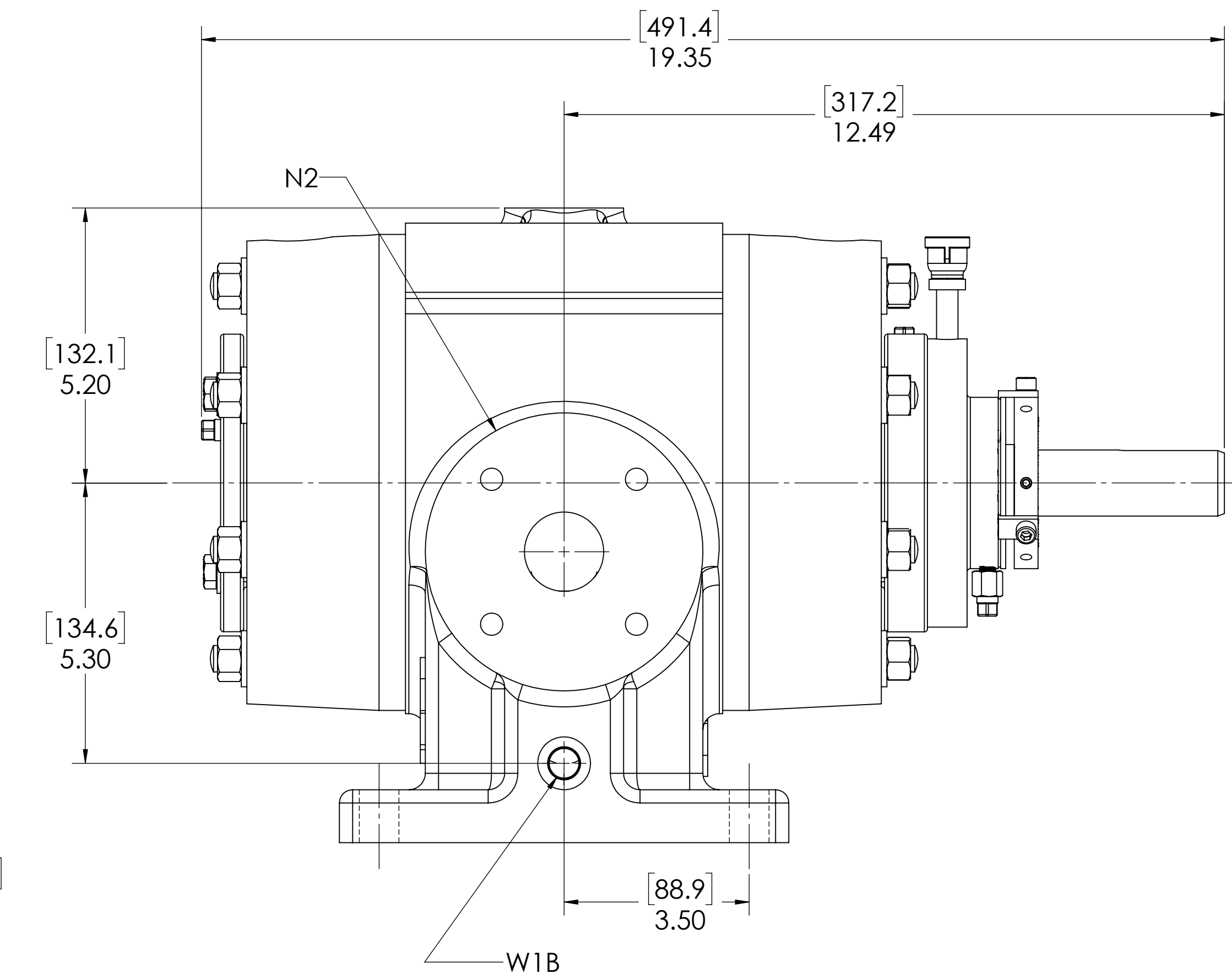
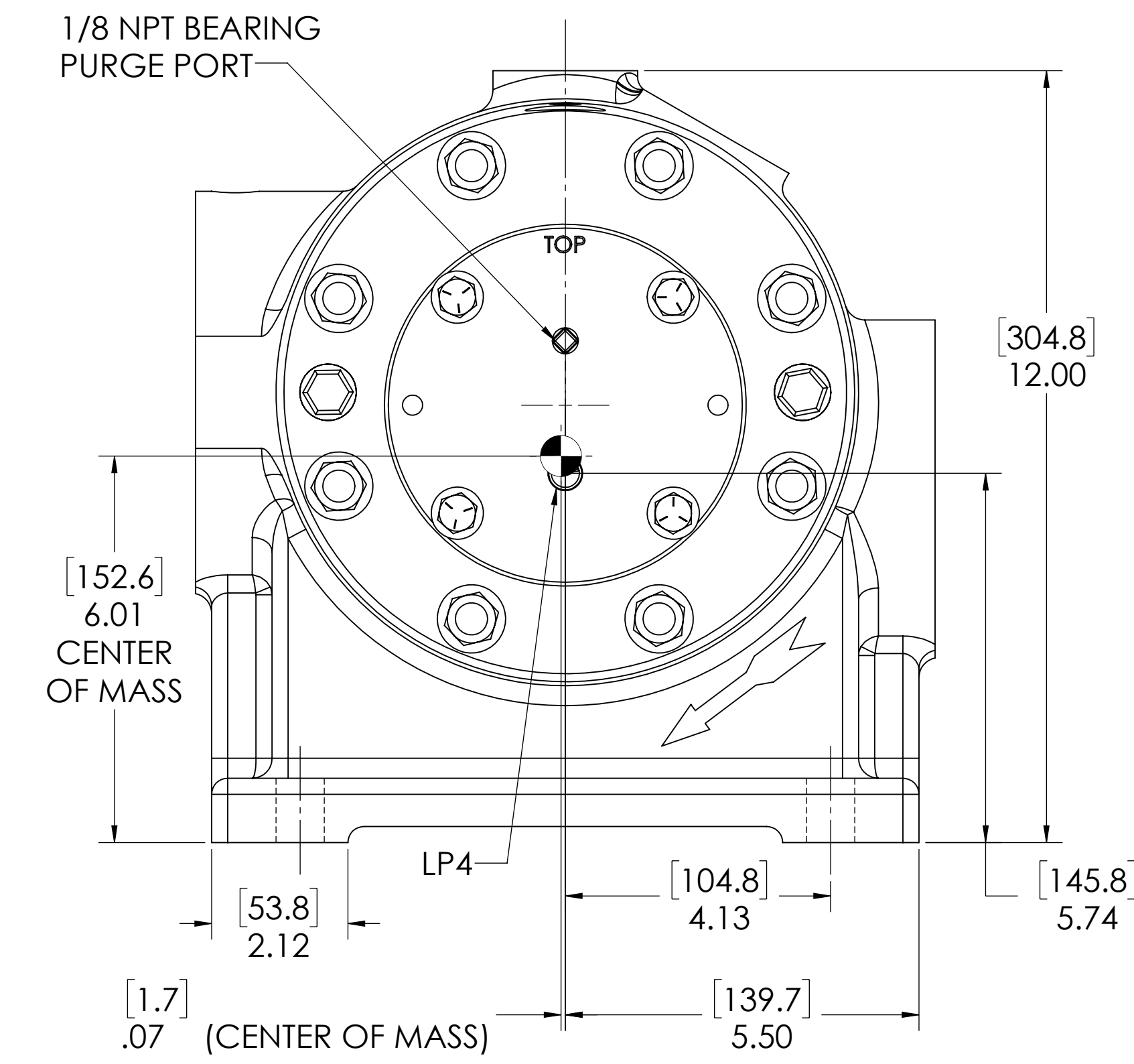
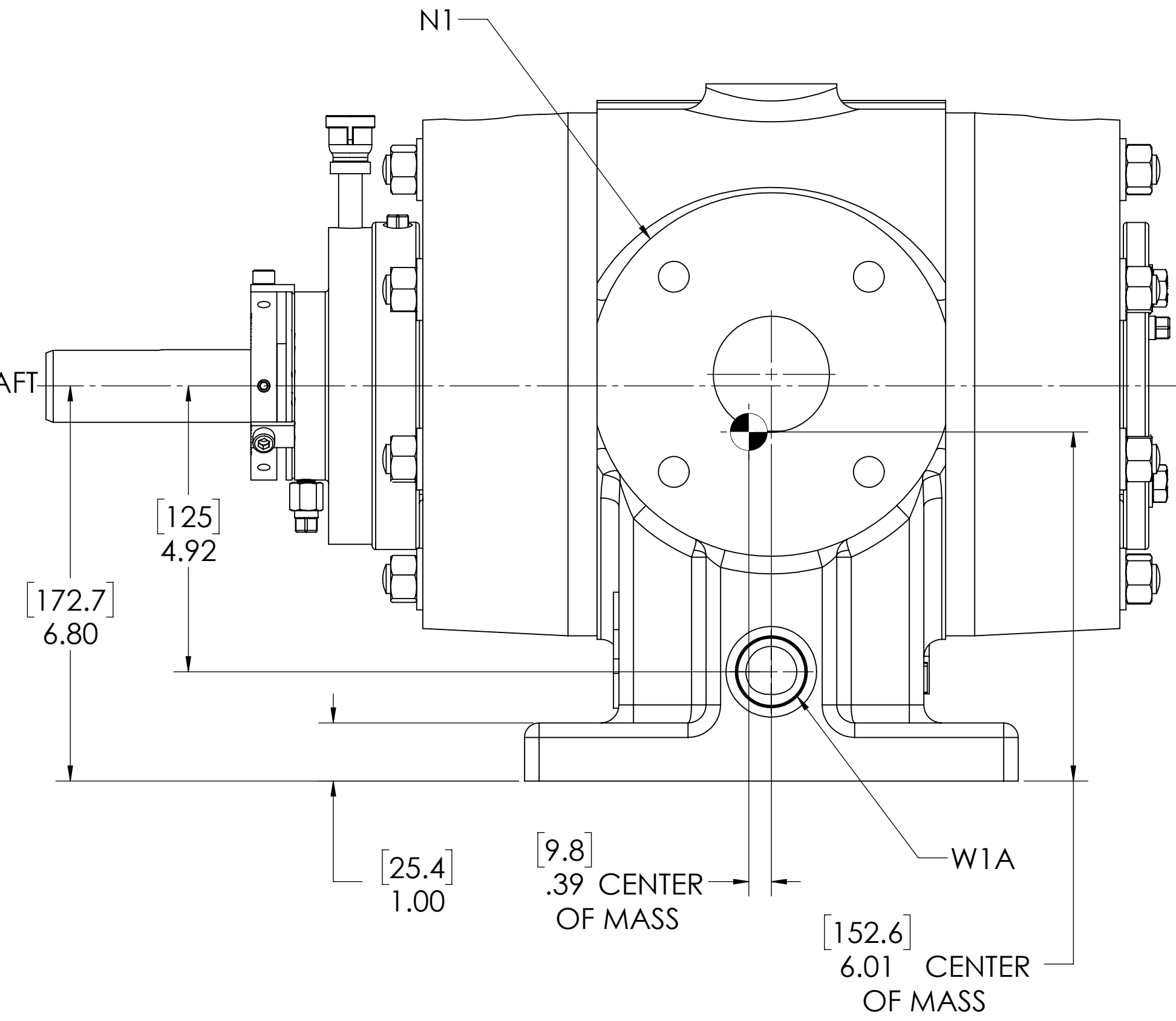
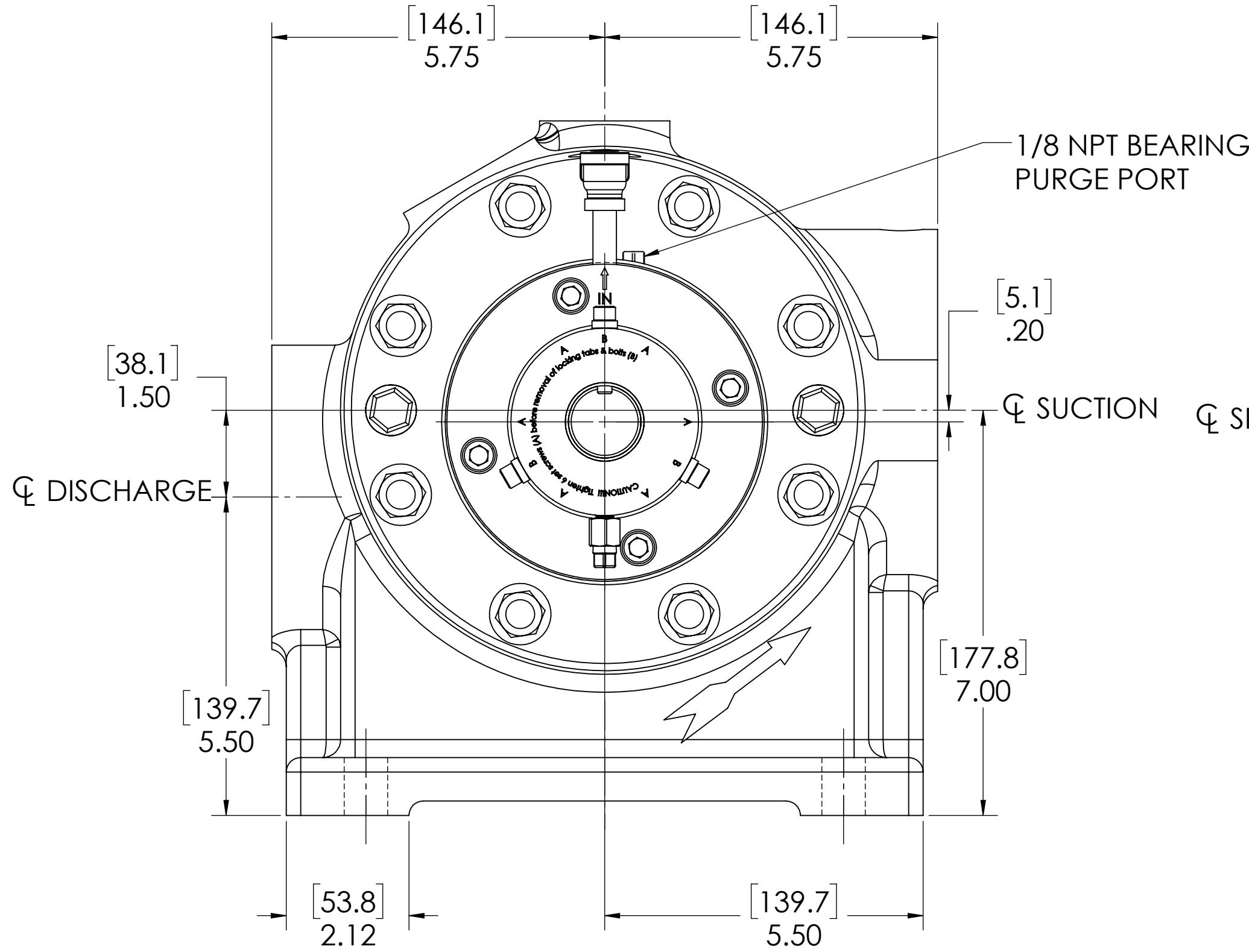
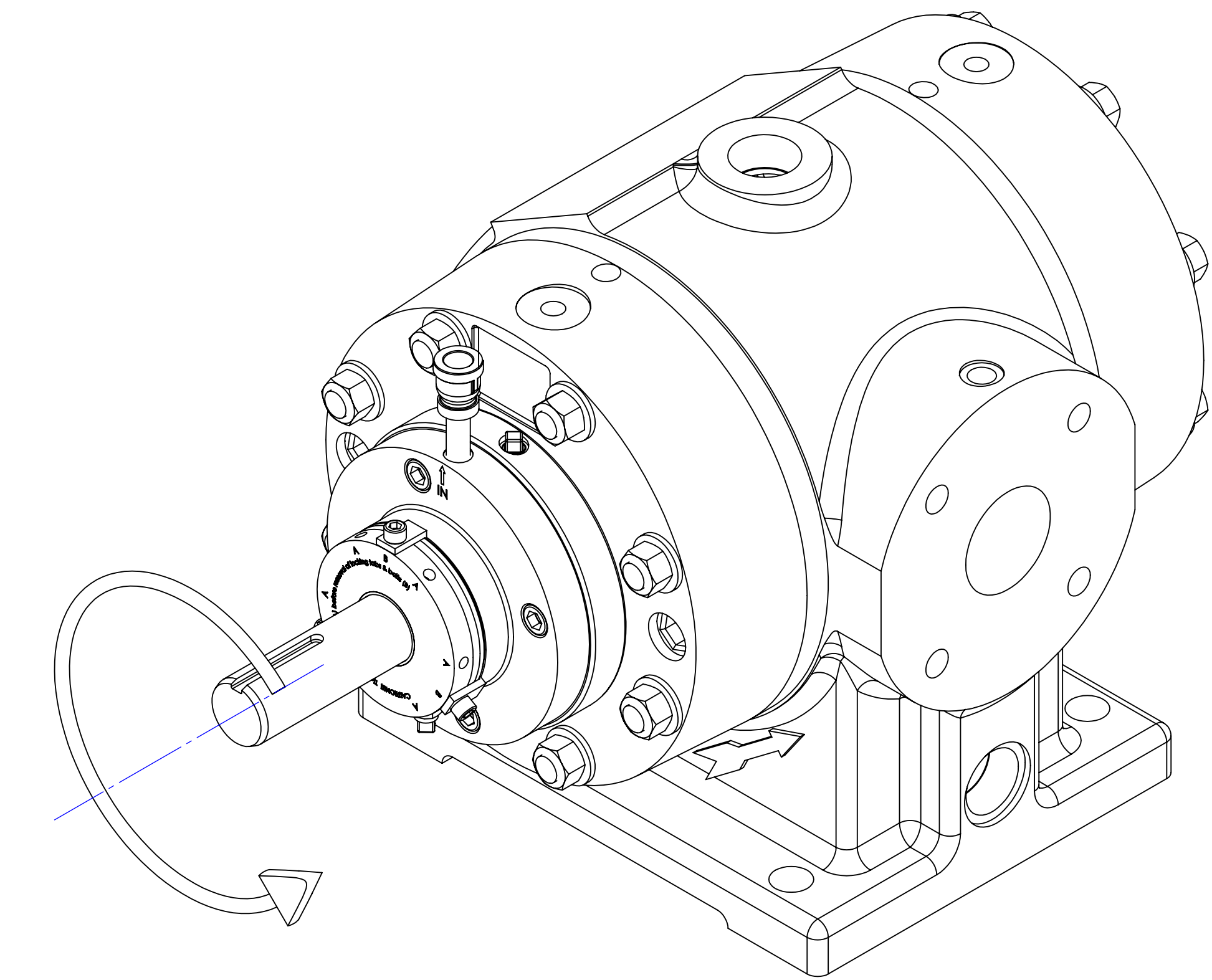
$\square$   $\phi$  1.25 [31.8]  $\nabla$  .01  
FLAT CREATED TO MOUNT ACCELEROMETER.  
FLAT IS CENTERED ON LIFTING HOLE.

[101.6]  
4.00 CLEARANCE REQUIRED  
TO REMOVE CYLINDER HEAD  
AND END COVER AND TO REMOVE  
ROTOR BLADES

[104.6]  
4.12 CLEARANCE REQUIRED  
TO REMOVE CYLINDER HEAD  
AND SEAL ADAPTER



DETAIL OF ROTOR  
AND KEYWAY



NOTES:

- CENTER OF MASS DIMENSIONS ARE APPROXIMATE
- EITHER WATER INLET MAY BE USED, DEPENDING UPON SYSTEM NEEDS
- WEIGHT IS APPROXIMATE
- THIS DRAWING IS DUAL DIMENSION. DIMENSIONS WITHOUT BRACKETS ARE IN INCHES, DIMENSIONS IN [BRACKETS] ARE IN MILLIMETERS.
- REMOVE (3) RED SEAL LOCKING TABS BEFORE OPERATION. RETAIN TABS AND SCREWS FOR SERVICE (TABS MUST BE INSTALLED BEFORE SEAL REMOVAL).

NOZZLE CONNECTIONS	BOLT HOLE SIZE
N1 2" GAS SUCTION FLANGE (ANSI CLASS 150 FLAT FACE)	4 x 5/8-11 $\nabla$ 1.00
N2 1.50" GAS DISCHARGE FLANGE (ANSI CLASS 150 FLAT FACE)	4 x 1/2-13 $\nabla$ .88
W1A 1 NPT(F) WATER INLET (SEE NOTE 2)	N/A
W1B 3/8 NPT(F) WATER INLET (SEE NOTE 2)	N/A
W2 1 NPT(F) WATER OUTLET	N/A
D1 1/8 NPT (F) SEAL WEEPAGE DRAIN	N/A

OIL CONNECTION POINTS SUMMARY (REFER TO MANUAL FOR FURTHER INFORMATION)		
DESCRIPTION	THREAD SIZE	QTY
LUBE QUILL (LQX)	1/4 NPT (F)	1
LUBE POINTS (LPX)	1/4 NPT (F)	4