

[104.9] 4.13 CLEARANCE REQUIRED TO REMOVE CYLINDER HEAD AND SEAL ADAPTER

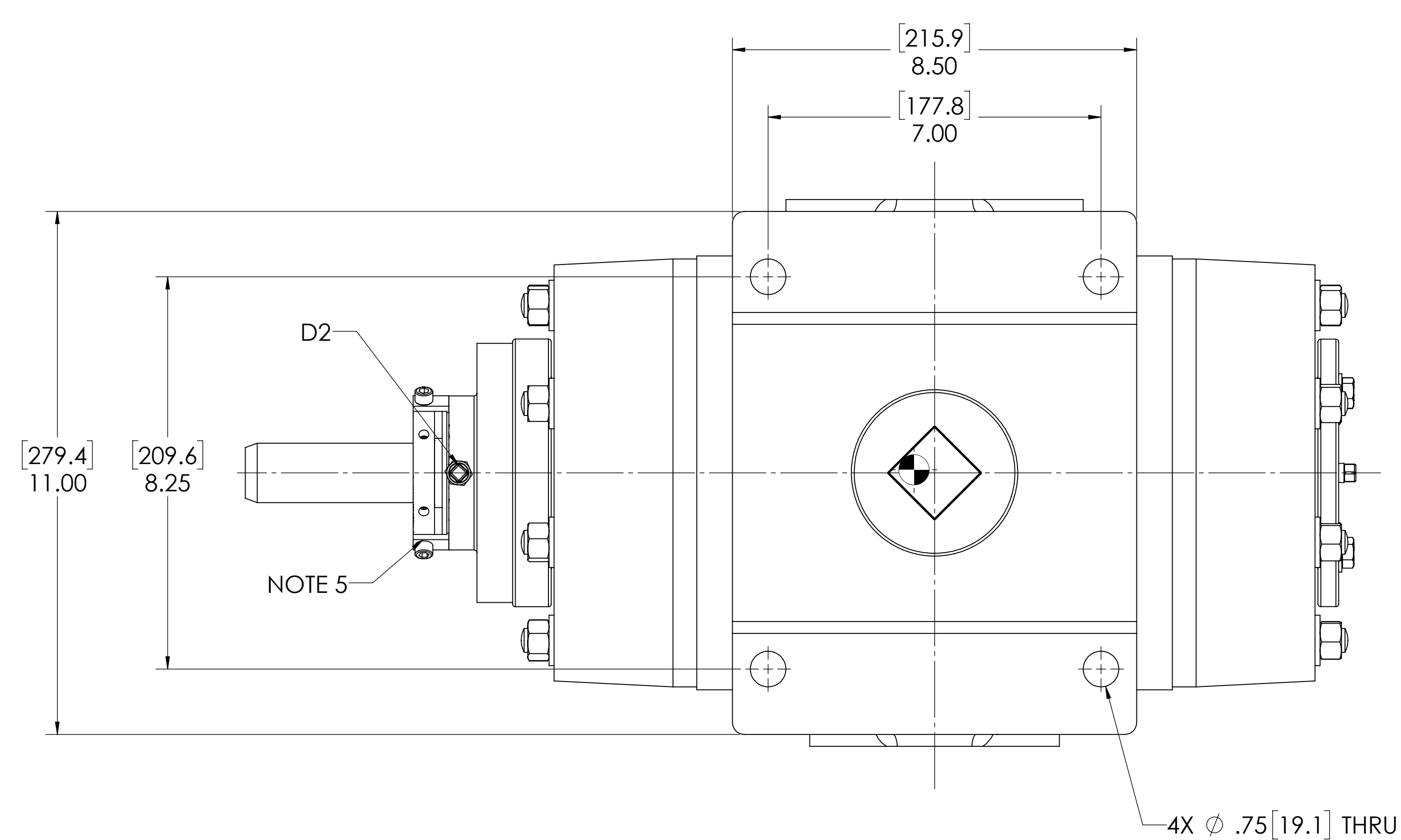
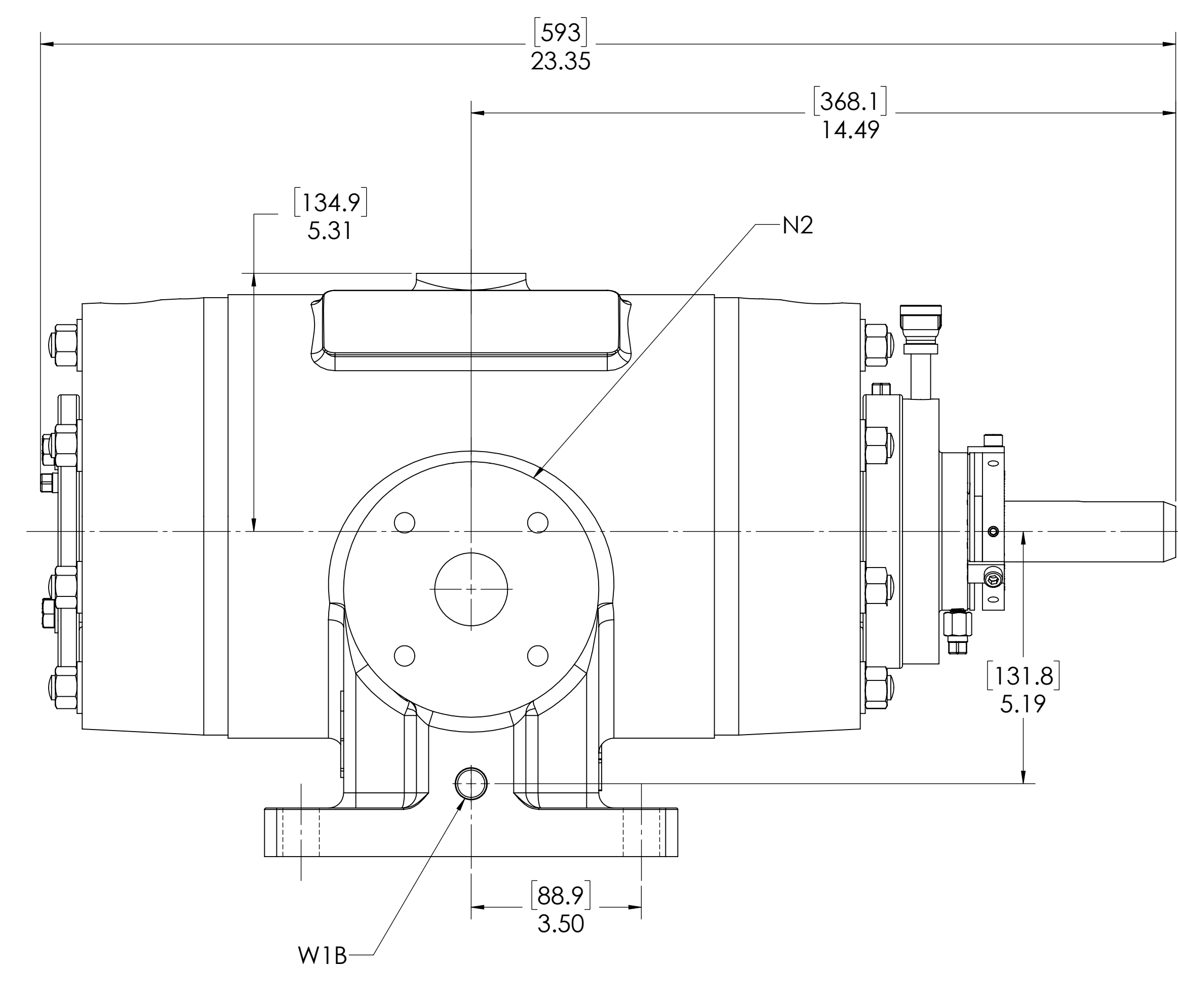
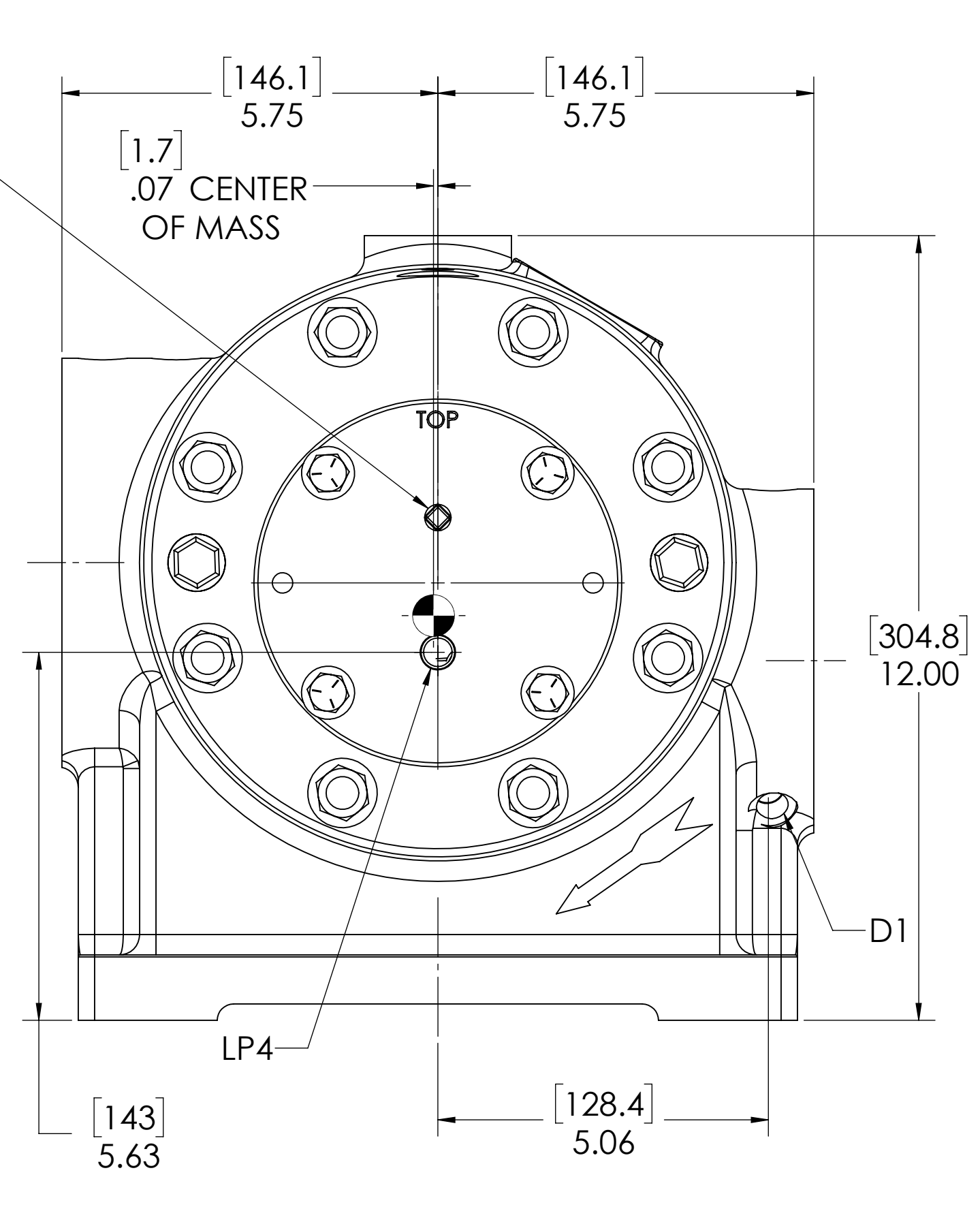
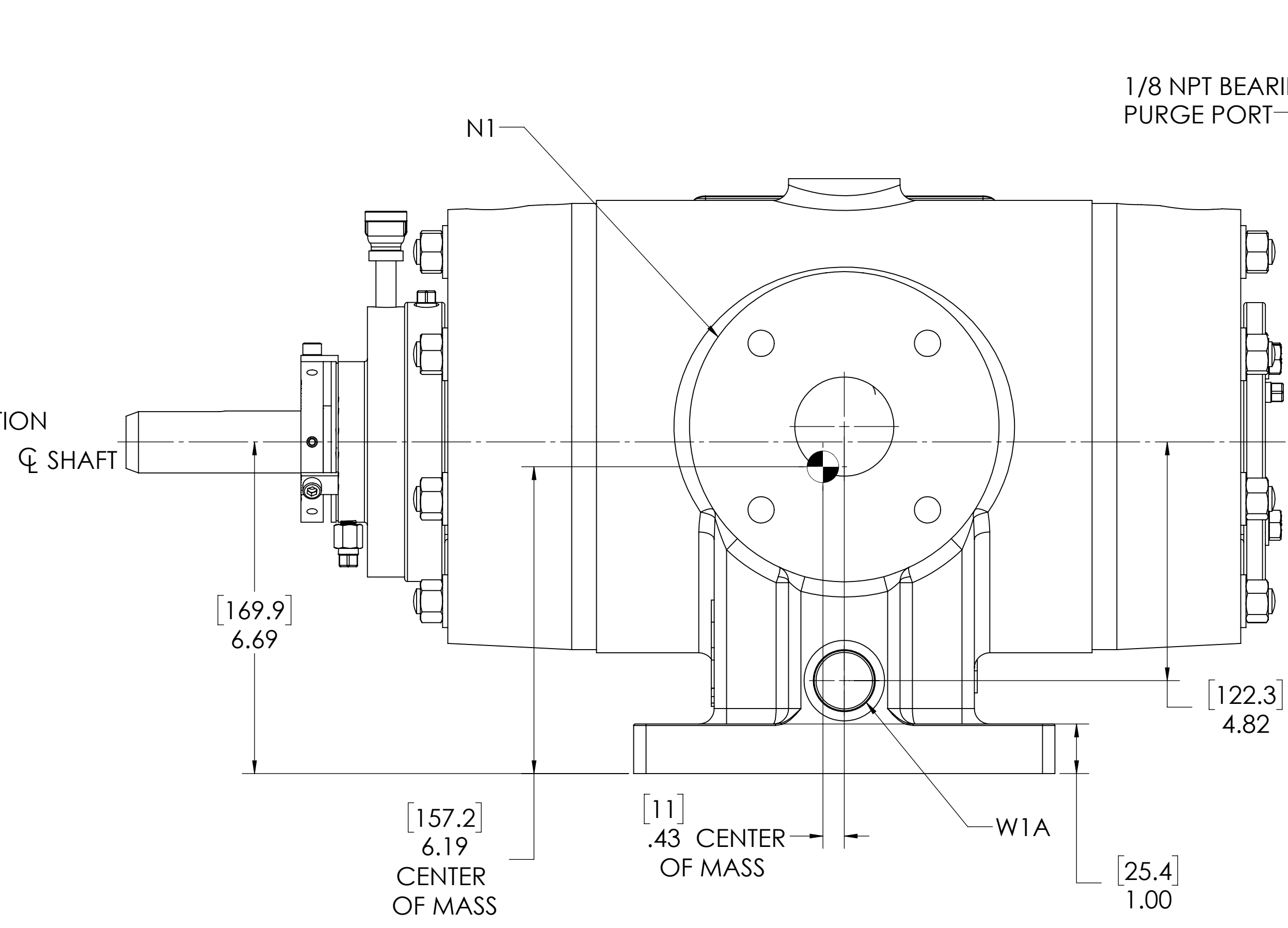
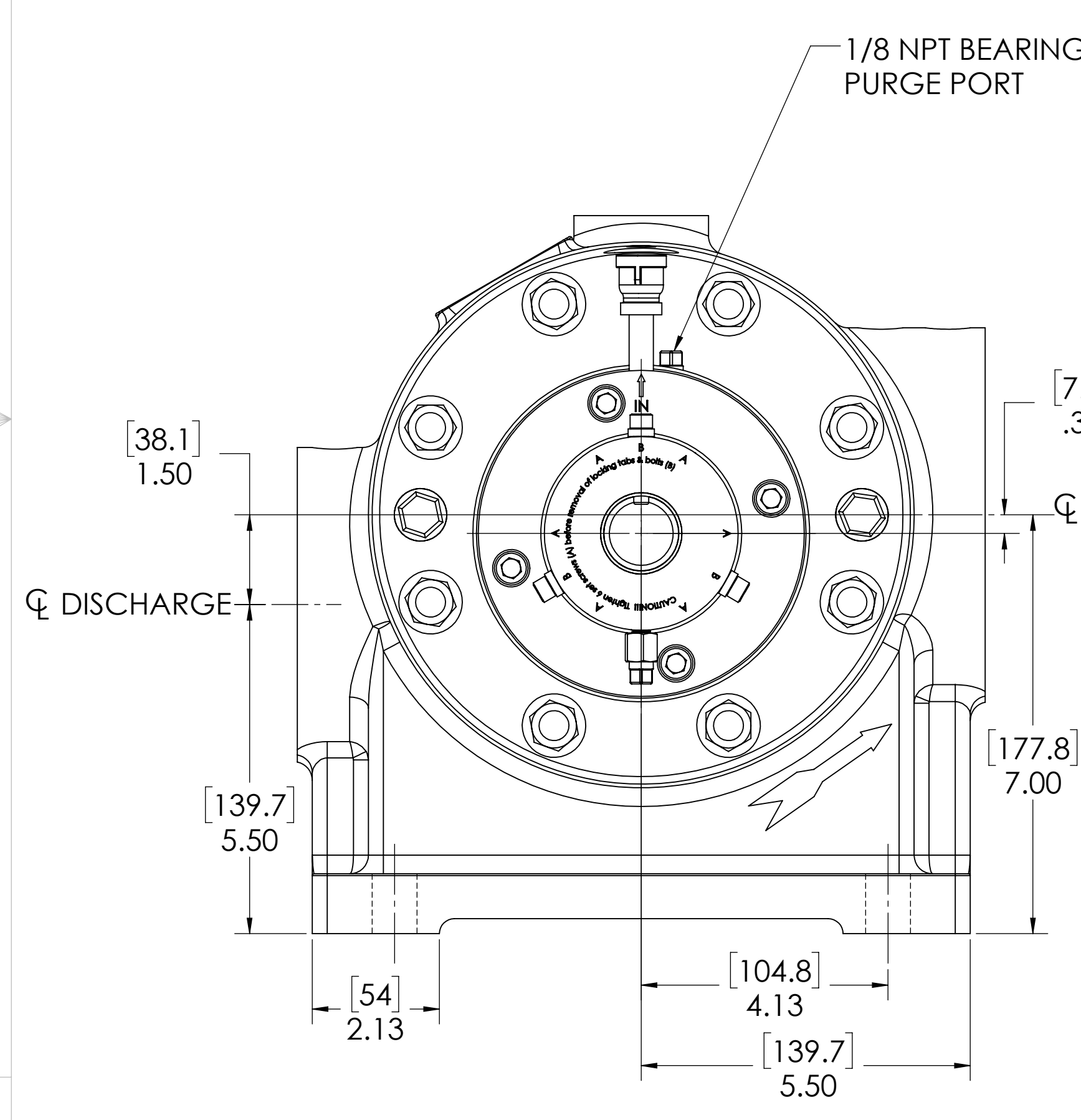
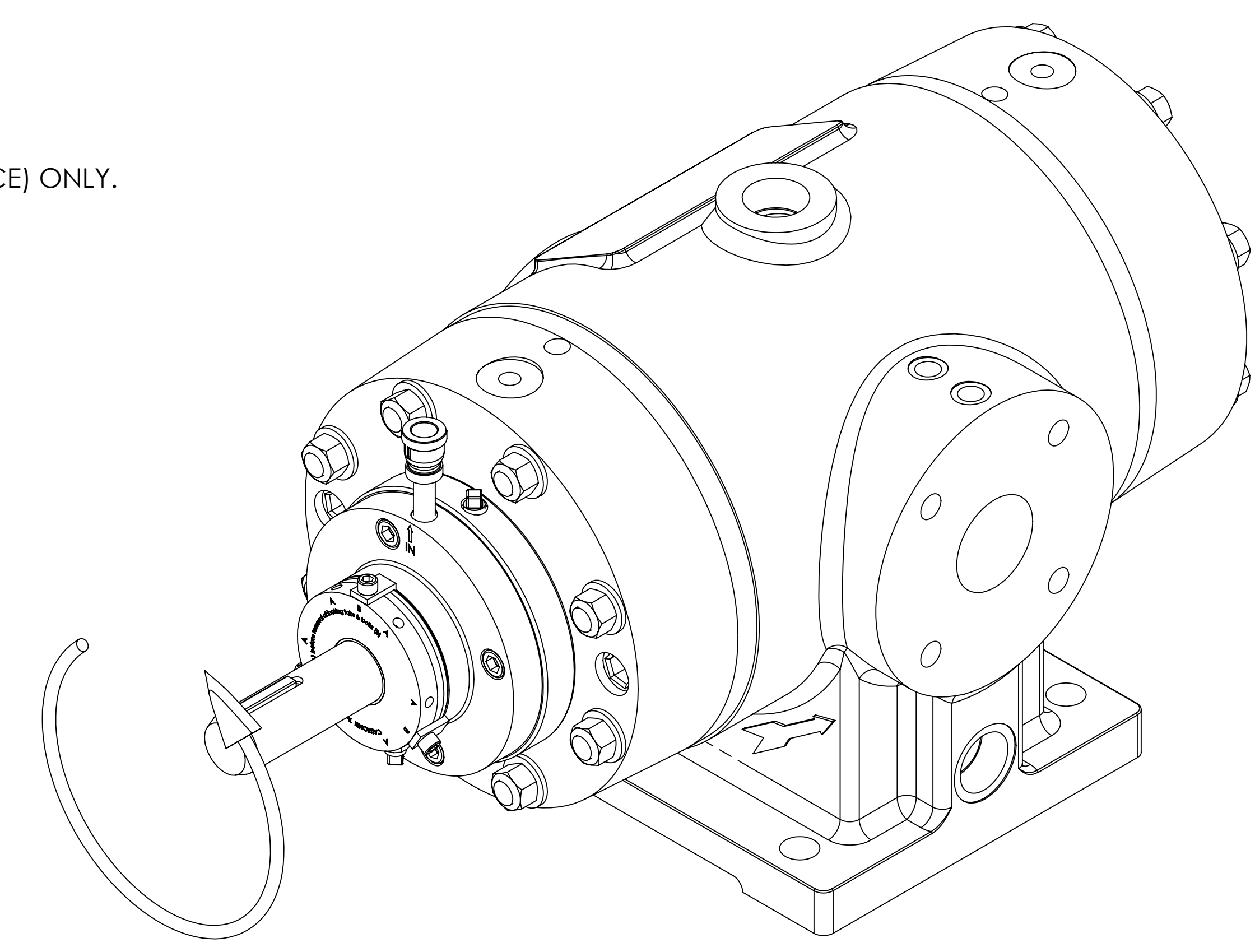
THIS IS A LIFTING HOLE FOR CYLINDER HEAD (MAINTENANCE) ONLY. DO NOT USE THIS HOLE FOR LIFTING COMPRESSOR!

FLAT CREATED FOR MOUNTING ACCELEROMETER. CENTERED ON LIFTING HOLE.

THIS IS A LIFTING HOLE FOR CYLINDER HEAD (MAINTENANCE) ONLY. DO NOT USE THIS HOLE FOR LIFTING COMPRESSOR!

CLEARANCE REQUIRED TO REMOVE CYLINDER HEAD AND END COVER

CLEARANCE REQUIRED TO REMOVE ROTOR BLADES



OIL CONNECTION POINTS SUMMARY		
(REFER TO MANUAL FOR FURTHER INFORMATION)		
DESCRIPTION	THREAD SIZE	QTY
LUBE QUILL (LQx)	1/4 NPT (F)	1
LUBE POINTS (LPx)	1/4 NPT (F)	4

NOZZLE CONNECTIONS		BOLT HOLE SIZE
N1	2" GAS SUCTION FLANGE (ANSI CLASS 150 FLAT FACE)	4 x 5/8-11 $\nabla$ 1.00
N2	1.50" GAS DISCHARGE FLANGE (ANSI CLASS 150 FLAT FACE)	4 x 1/2-13 $\nabla$ .88
W1A	1 NPT(F) WATER INLET (SEE NOTE 2)	N/A
W1B	3/8 NPT(F) WATER INLET (SEE NOTE 2)	N/A
W2	1 NPT(F) WATER OUTLET	N/A
D1	1/4 NPT (F) DRAIN HOLE	N/A
D2	1/8 NPT (F) SEAL WEEPAGE DRAIN	N/A

- NOTES:
- CENTER OF MASS DIMENSIONS ARE APPROXIMATE
  - EITHER WATER INLET MAY BE USED, DEPENDING UPON SYSTEM NEEDS
  - WEIGHT IS APPROXIMATE
  - THIS DRAWING IS DUAL DIMENSION. DIMENSIONS WITHOUT BRACKETS ARE IN INCHES, DIMENSIONS IN [BRACKETS] ARE IN MILLIMETERS.
  - REMOVE (3) RED SEAL LOCKING TABS BEFORE OPERATION. RETAIN TABS AND SCREWS FOR SERVICE (TABS MUST BE INSTALLED BEFORE SEAL REMOVAL).

UNLESS OTHERWISE SPECIFIED: DIMENSIONS ARE IN INCHES TOLERANCES: ANGULAR MATCH 5 DEG ONE PLACE DECIMAL 1.000 HUNDRETHS .010 THIRTY SECONDS PER MINUTE REVISIONS: 1.000 HUNDRETHS .001 THIRTY SECONDS PER MINUTE

DATE: 12/27/2023  
 DRAWN: TSS  
 CHECKED: TSS  
 INCHES: YES  
 HUNDRETHS: YES  
 THIRTY SECONDS PER MINUTE: YES

REVISIONS: 1.000 HUNDRETHS .001 THIRTY SECONDS PER MINUTE

Ro-Flo COMPRESSORS

GENERAL ARRANGEMENT, SCC.SC.CCW

16-123-634-532 00

1/2 240 LBS 1 OF 1